



# Bernard Dewagtere

France, SIN LE NOBLE

## L'Arlésienne (Suite n°2) – 7. Menuet Bizet, Georges

### About the artist

Doctor in musicology, conductor and composer.

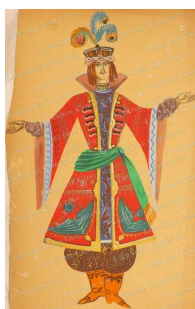
Compositions and arrangements from all eras, in all styles or musical genres and for any instrument or vocal training.

**Qualification:** PhD Musicology

**Associate:** SACEM - IPI code of the artist : 342990

**Artist page :** <https://www.free-scores.com/Download-PDF-Sheet-Music-bernard-dewagtere.htm>

### About the piece



**Title:** L'Arlésienne (Suite n°2) – 7. Menuet

**Composer:** Bizet, Georges

**Arranger:** Dewagtere, Bernard

**Copyright:** Public Domain

**Publisher:** Dewagtere, Bernard

**Instrumentation:** Clarinet solo

**Style:** Romantic

### Bernard Dewagtere on [free-scores.com](https://www.free-scores.com)

#### LICENSE

This sheet music requires an authorization  
- for public performances  
- for use by teachers

**Buy this license at :**

<https://www.free-scores.com/license?p=af8fxl36er>



- listen to the audio
- share your interpretation
- comment
- pay the licence
- contact the artist

Prohibited distribution on other website.

# L'Arlésienne (Suite n°2)

## 7. Menuet

Georges Bizet (1872)

Transc. : Bernard Dewagtere

Andantino quasi Allegretto ♩ = 74

Clarinette en Sib

*dolce*

*pp* *p*

*più f*

*cres - - cen - - do* *sf* *p*

*più f* *poco sf*

*p*

*f* *ff*

*ff*

# L'Arlésienne (Suite n°2)

2  
47

53

59

65  
*p*

71  
*più f* *poco sf*

77  
*p*

81  
*f* *ppdolcissimo*

86  
*smor -*

91

The image displays a musical score for the second suite of L'Arlésienne. It consists of nine staves of music, each beginning with a measure number. The notation is in treble clef with a key signature of one flat (B-flat). The music features a variety of rhythmic patterns, including eighth and sixteenth notes, often grouped in beams. Dynamic markings such as *p* (piano), *f* (forte), *ppdolcissimo* (pianissimo dolcissimo), and *smor -* (smorzando) are used to indicate changes in volume and articulation. Phrasing is indicated by curved lines (slurs) over groups of notes. The score is presented in a clean, professional layout with clear notation and dynamic markings.