



# Bernard Dewagtere

France, SIN LE NOBLE

## Polka (Op. 39, N°10) Tchaikovsky, Piotr Ilitch

### About the artist

Doctor in musicology, conductor and composer.

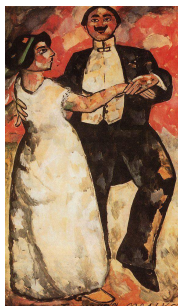
Compositions and arrangements from all eras, in all styles or musical genres and for any instrument or vocal training.

**Qualification:** PhD Musicology

**Associate:** SACEM - IPI code of the artist : 342990

**Artist page :** <https://www.free-scores.com/Download-PDF-Sheet-Music-bernard-dewagtere.htm>

### About the piece



**Title:** Polka [Op. 39, N°10]  
**Composer:** Tchaikovsky, Piotr Ilitch  
**Arranger:** Dewagtere, Bernard  
**Copyright:** Copyright © Bernard Dewagtere  
**Publisher:** Dewagtere, Bernard  
**Instrumentation:** Recorder (S. or T.), piano (or organ)  
**Style:** Romantic

### Bernard Dewagtere on [free-scores.com](https://www.free-scores.com)

#### LICENSE

This sheet music requires an authorization  
- for public performances  
- for use by teachers

**Buy this license at :**

<https://www.free-scores.com//license?p=aEksLNEEVm>



- listen to the audio
- share your interpretation
- comment
- pay the licence
- contact the artist

Prohibited distribution on other website.

# Polka (Op. 39, N°10)

Album pour enfants – Album for the Young

Tchaïkovski, P. I. (1878)

Transc. : Bernard Dewagtere

**Allegretto**

Flûte à bec Ténor

Piano

Fl. à b. T.

Fl. à b. T.

Measures 1-5 of the Polka. The Flute part (top staff) begins with a treble clef, a key signature of two flats (B-flat and E-flat), and a 2/4 time signature. It features a melodic line with eighth and sixteenth notes, starting on a whole rest. The Piano part (bottom staves) also begins with a treble and bass clef, two flats, and 2/4 time. It provides a harmonic accompaniment with chords and moving lines. Both parts are marked with a piano (*p*) dynamic. The key signature changes to one flat (B-flat) at measure 4.

Measures 6-10 of the Polka. Measure 6 is marked with a '6' above the staff. The Flute part (top staff) has a whole rest followed by a melodic phrase starting at measure 7. The Piano part (bottom staves) continues the accompaniment. Both parts are marked with *poco più f* (poco più forte) at measure 7. The key signature remains one flat.

Measures 11-15 of the Polka. Measure 11 is marked with an '11' above the staff. The Flute part (top staff) has a whole rest followed by a melodic phrase starting at measure 12. The Piano part (bottom staves) continues the accompaniment. The piano (*p*) dynamic is marked at measure 12. The key signature changes to two flats (B-flat and E-flat) at measure 14.

Polka (Op. 39, N°10)

Fl. à b. T.

2  
16

16

*cresc.*

Fl. à b. T.

21

*mf* *f* *p*

21

*f* *p*

Fl. à b. T.

26

26