



Rebecca Kaiserin

Hong Kong, Hong Kong

Autumn Wind

About the artist

Associate: CASH - IPI code of the artist : 27403309
Artist page : <https://www.free-scores.com/Download-PDF-Sheet-Music-kaiserinrebecca.htm>

About the piece



Title: Autumn Wind
Composer: Kaiserin, Rebecca
Copyright: Copyright © Rebecca Kaiserin
Instrumentation: Piano solo
Style: Romantic
Comment: Autumn wind calls back the memory of a beloved one's faded sweet smile. When the fate is so, reject is useless. Though I believe in a better tomorrow, I won't forget you.

Rebecca Kaiserin on [free-scores.com](https://www.free-scores.com)



This work is not Public Domain. You must contact the artist for any use outside the private area.

Prohibited distribution on other website.

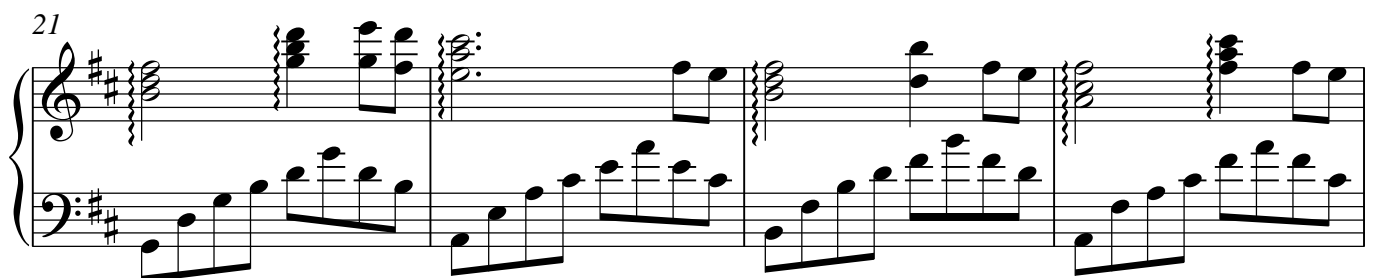
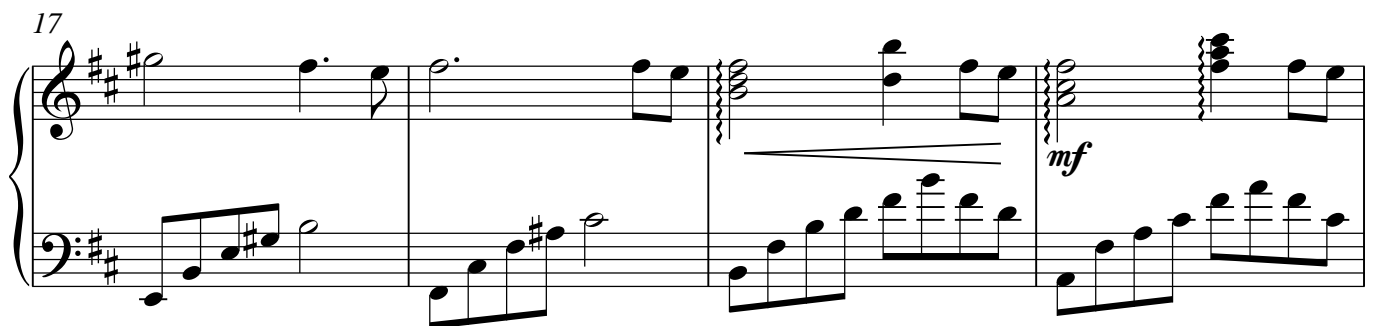
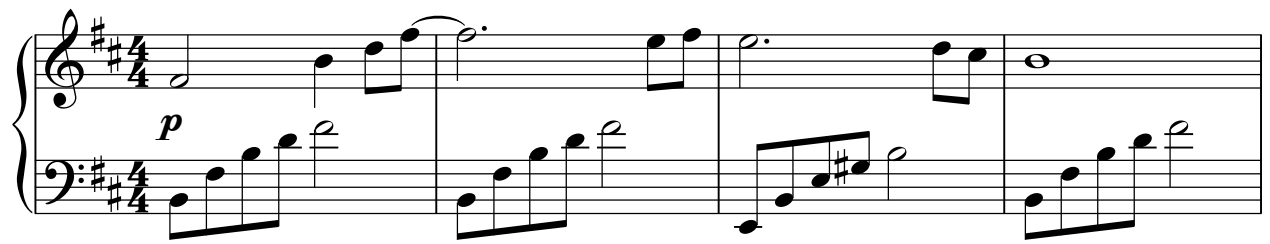


- listen to the audio
- share your interpretation
- comment
- contact the artist

Autumn Wind

Kaiserin Rebecca

Moderato



25

1.

29

29

8^{va}

33

33

(8)

35

35

2.

39

39

Measures 39-42 of a musical score in G major (one sharp). The score is written for piano in treble and bass staves. Measures 39 and 41 feature a complex texture with multiple beamed sixteenth notes in the bass and chords in the treble. Measures 40 and 42 show a more active treble part with eighth-note runs, while the bass continues with a steady eighth-note pattern.

43

Measures 43-46 of the musical score. Measures 43 and 45 continue the eighth-note bass line and feature active treble parts. Measures 44 and 46 show a more static treble with sustained chords, while the bass remains active with eighth notes.

47

Measures 47-50 of the musical score. Measures 47 and 49 feature a complex texture with multiple beamed sixteenth notes in the bass and chords in the treble. Measures 48 and 50 show a more active treble part with eighth-note runs, while the bass continues with a steady eighth-note pattern.

51

rit.

Measures 51-54 of the musical score, marked with a *rit.* (ritardando) instruction. Measures 51 and 53 continue the eighth-note bass line. Measures 52 and 54 show a more static treble with sustained chords, while the bass remains active with eighth notes. The piece concludes with a final chord in measure 54.