



Rebecca Kaiserin

Hong Kong, Hong Kong

Gentle Sunshine (Op.11 no.1)

About the artist

Associate: CASH - IPI code of the artist : 27403309
Artist page : <https://www.free-scores.com/Download-PDF-Sheet-Music-kaiserinrebecca.htm>

About the piece



Title: Gentle Sunshine [Op.11 no.1]
Composer: Kaiserin, Rebecca
Copyright: Copyright © Rebecca Kaiserin
Instrumentation: Piano solo
Style: New age - Ambient

Rebecca Kaiserin on [free-scores.com](https://www.free-scores.com)



This work is not Public Domain. You must contact the artist for any use outside the private area.

Prohibited distribution on other website.



- listen to the audio
- share your interpretation
- comment
- contact the artist

Gentle Sunshine

Op.11 no.1

Kaiserin Rebecca

Andante ♩=78

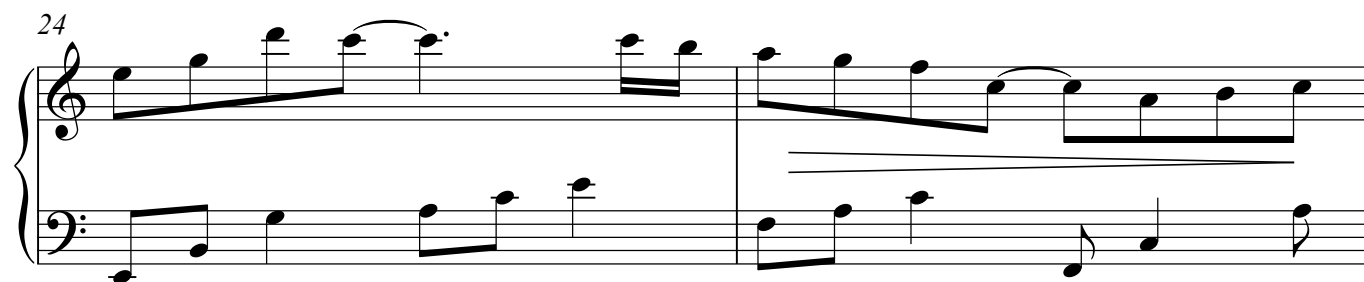
Measures 1-3 of the piece. The music is in 4/4 time. The right hand plays a melody of eighth and quarter notes, while the left hand provides a bass line of eighth and quarter notes. The first measure includes a piano (*p*) dynamic marking and a *con ped.* instruction.

Measures 4-7. The melody continues with some rests and ties. The bass line remains active with eighth and quarter notes.

Measures 8-11. The music features a crescendo leading into measure 9, which is marked *mp* (mezzo-piano). The right hand has a melodic line with ties, and the left hand continues with a steady eighth-note pattern.

Measures 12-15. This section continues the melodic and harmonic development. Measure 12 is marked *mp*. The right hand melody includes some grace notes and ties.

Measures 16-19. The piece reaches a slightly louder section starting at measure 16, marked *mf* (mezzo-forte). The right hand features a more active melody with eighth-note runs.



Follow Me on:



Spotify



Soundcloud



Youtube