



Bernard Dewagtere

France, SIN LE NOBLE

Symphonies (1 to 9 - Themes) Beethoven, Ludwig van

About the artist

Doctor in musicology, conductor and composer.

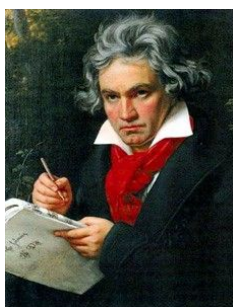
Compositions and arrangements from all eras, in all styles or musical genres and for any instrument or vocal training.

Qualification: PhD Musicology

Associate: SACEM - IPI code of the artist : 342990

Artist page : <https://www.free-scores.com/Download-PDF-Sheet-Music-bernard-dewagtere.htm>

About the piece



Title: Symphonies (1 to 9 - Themes)
Composer: Beethoven, Ludwig van
Arranger: Dewagtere, Bernard
Copyright: Copyright © Dewagtere, Bernard
Instrumentation: Recorder (S. or T.)
Style: Romantic

Bernard Dewagtere on [free-scores.com](https://www.free-scores.com)

LICENSE

This sheet music requires an authorization
- for public performances
- for use by teachers

Buy this license at :

<https://www.free-scores.com/licence-partition-uk.php?partition=34508>



- listen to the audio
- share your interpretation
- comment
- pay the licence
- contact the artist

Prohibited distribution on other website.

Symphonies (Thèmes)

Transc. pour flûte à bec

L. van Beethoven (1770 – 1827)

Transc. : Bernard Dewagtere

1ère Symphonie - I. Allegro con brio

Flûte à bec
Sop. ou Tén.

First movement of Beethoven's 1st Symphony, Allegro con brio. The score is written for Flute or Oboe. It begins with a treble clef, a key signature of one sharp (F#), and a common time signature (C). The tempo is marked 'Allegro con brio'. The score consists of five staves of music. The first staff starts with a piano (*p*) dynamic. The second staff has a measure rest followed by a trill. The third staff has three measures marked *sf* (sforzando). The fourth staff has three measures marked *f* (forte) and *sf*. The fifth staff ends with 'Etc.' and a double bar line. The key signature changes to two flats (Bb) for the final measure.

II. Andante cantabile

Second movement of Beethoven's 1st Symphony, Andante cantabile. The score is written for Flute or Oboe. It begins with a treble clef, a key signature of two flats (Bb), and a 3/8 time signature. The tempo is marked 'Andante cantabile'. The score consists of three staves of music. The first staff starts with a piano (*p*) dynamic. The second staff has a measure rest followed by a crescendo (*cresc.*) and a *sf* (sforzando) dynamic. The third staff has three measures marked *sf*, *sf*, and *f* (forte). The key signature changes to one flat (B) for the final measure.

III. Menuetto

Third movement of Beethoven's 1st Symphony, Menuetto. The score is written for Flute or Oboe. It begins with a treble clef, a key signature of one flat (Bb), and a 3/4 time signature. The tempo is marked 'Menuetto'. The score consists of three staves of music. The first staff starts with a piano (*p*) dynamic, followed by a crescendo (*cresc.*) and a *f* (forte) dynamic. The second staff has a measure rest followed by a *f* dynamic. The third staff has four measures marked *sf* (sforzando). The key signature changes to two sharps (D) for the final measure.

2ème Symphonie - I. Allegro con brio



II. Larghetto



III. Scherzo



IV. Allegro molto



3ème Symphonie - I. Allegro con brio

3

165 *f* *p* *cresc.*

174 *sf* *p* *cresc.* *p*

183 *cresc.* *fp* *sf* *sf* *sf* *fp*

192 *sf* *sf* *sf* *sf* *sf* *sf* *sf* *sf* *cresc.*

201 *ff* *sf* *sf* *Etc.*

II. Adagio assai

209 *sotto voce* *pp*

215 *sf* *p*

221 *p* *Etc.*

III. Scherzo

227 *sempre pp e staccato* *pp*

235 *Etc.*

4ème Symphonie - I. Adagio

244 *pp* *sempre pp* *fp* *Etc.*

II. Adagio

264 *p* *cantabile* *cresc.* *sf* *p* *cresc.* *f* *Etc.*

III. Allegro vivace

276 *f* *cresc.* *sf* *ff* *p* *Etc.*

5ème Symphonie - I. Allegro con brio

5

308 *ff* *p*

320 *cresc. f* *p dolce* Etc.

332 3x 5x *cresc.*

345 *ff* 1. 2. Etc.

II. Andante con moto

356 *p dolce* *f*

364 *p* *f* *p* *f* *p* 3 Etc.

III. Allegro

374 *pp* 1.

382 2. *fp* *pp*

390 3x *f* 3x

398 *sf* *sf* *sf* *dim.* Etc.

IV. Allegro

407 *ff*

413 1. 2.

417 1. 2. Etc.

6ème Symphonie - I. Allegro ma non troppo

423 *p* *cresc.*

433 *f* *p* *cresc.* 3x *f* *dim.*

442 *p* Etc.

II. Andante molto moto

449 *p*

452 *cresc.* *fp* *cresc.* *p*

III. Allegro

457 *p* *mp dolce*

467 1. 2. Etc. *p*

IV. Allegro

477 *f* *sf* *sf*

V. Allegretto

484 *p dolce* *cresc.*

492 *p* Etc.

7ème Symphonie - I. Poco sostenuto

7

500 *f* *fp* *fp* *fp*

507 *dim.* *pp* *dolce*

511 *cresc.* *ff* Etc.

II. Allegretto

516 *p* *mp* *mf*

526 *f*

536

546 *dim.* *p* Etc.

IV. Allegro con brio

552 *ff* *sf* *sf* *sf*

560 *sf* *sf* *sf* *sf* *sf*

566 *sf* *sf* *sf* *sf* *sf* Etc.

8ème Symphonie - I. Allegro vivace

573 *f* *p dolce* *f* *sf*

583

593 *sf* *sf* *sf* *sf* Etc.

II. Allegretto scherzando

601 *p* *sempre staccato*

606 *ff sf p*

III. Tempo di minuetto

611 *f sf sf sf p cresc. f*

618 1. 2. Etc. *f sf*

IV. Allegro vivace

625 *ff*

631 Etc.

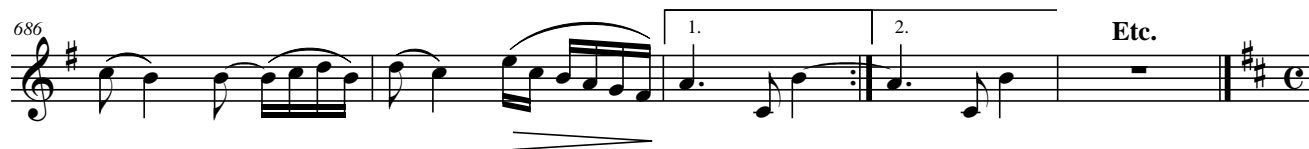
9ème Symphonie - I. Allegro



II. Molto vivace



III. Adagio



IV. Allegro assai

