



van der Wal Reinier

Arrangeur, Compositeur, Interprete, Professeur

Pays-Bas, Gouda

A propos de l'artiste

J'ai été clarinettiste du "Koninklijke Militaire Kapel", l'orchestre militaire royal des Pays Bas, de 1972 jusqu' à 2003.

Aussi j'étais professeur de clarinette de l'école de musique à Gouda pendant plus de 30 ans. J'ai adapté beaucoup de morceaux de musique pour clarinette.

En 1996 j'ai commencé l'étude du violoncelle pour mon agrément et maintenant c'est, après la clarinette, mon deuxième amour musical.

Page artiste : https://www.free-scores.com/partitions_gratuites_reinier-van-der-wal.htm

A propos de la pièce



Titre : Partite sopra diverse Sonate per il Violone

Compositeur : Vitali, Giovanni Battista

Arrangeur : Reinier, van der Wal

Droit d'auteur : Public Domain

Instrumentation : Violoncelle seul

Style : Baroque

van der Wal Reinier sur [free-scores.com](https://www.free-scores.com)



- partager votre interprétation
- commenter la partition
- contacter l'artiste

PARTITE SOPRA DIVERSE SONATE

DI GIOVANNI BATTISTA VITALI

18-2-1632 / 12-10-1692

PER IL VIOLONE

VIOLONE



Musical notation for Violone, measures 1-3. The piece is in C major and common time. It begins with a quarter rest, followed by a series of eighth and sixteenth notes.

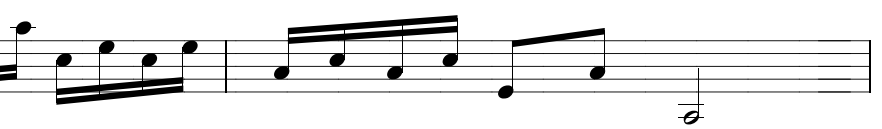
TOCCATA

4




Musical notation for Toccata, measure 4. The notation continues with eighth and sixteenth notes.

6



Musical notation for Toccata, measure 6. The notation continues with eighth and sixteenth notes.

8




Musical notation for Toccata, measure 8. The notation continues with eighth and sixteenth notes.

10



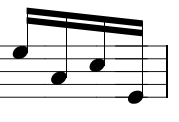
Musical notation for Toccata, measure 10. The notation continues with eighth and sixteenth notes.

12



Musical notation for Toccata, measure 12. The notation continues with eighth and sixteenth notes.

14




Musical notation for Toccata, measure 14. The notation continues with eighth and sixteenth notes.

16



Musical notation for Toccata, measure 16. The notation continues with eighth and sixteenth notes, ending with a whole note.

VIOLONE



Musical notation for Violone, first system. The staff is in bass clef with a common time signature (C). The music consists of several measures of eighth and sixteenth notes.

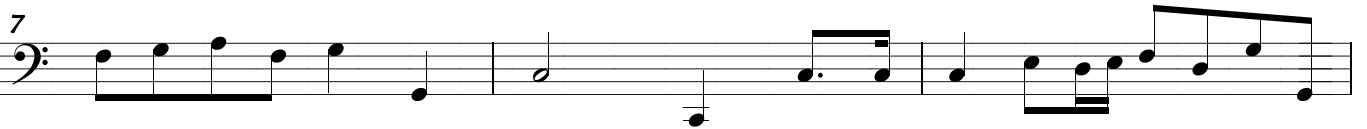
RUGGIERO PER LA LETTERA .B.

4



Musical notation for Ruggiero, second system. The staff is in bass clef. The music begins with a measure rest followed by eighth and sixteenth notes.

7



Musical notation for Ruggiero, third system. The staff is in bass clef. The music continues with eighth and sixteenth notes.

10



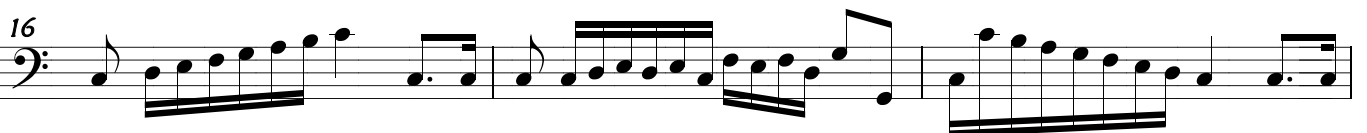
Musical notation for Ruggiero, fourth system. The staff is in bass clef. The music features a more complex rhythmic pattern with sixteenth notes.

13



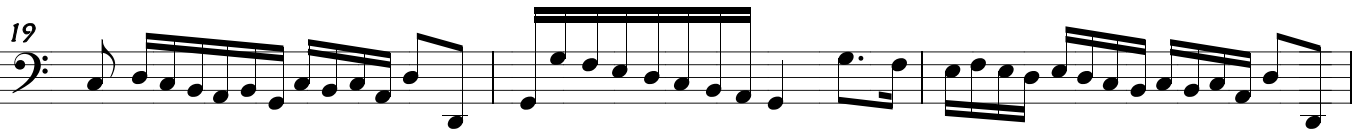
Musical notation for Ruggiero, fifth system. The staff is in bass clef. The music continues with eighth and sixteenth notes.

16



Musical notation for Ruggiero, sixth system. The staff is in bass clef. The music features a more complex rhythmic pattern with sixteenth notes.

19



Musical notation for Ruggiero, seventh system. The staff is in bass clef. The music continues with eighth and sixteenth notes.

22



Musical notation for Ruggiero, eighth system. The staff is in bass clef. The music continues with eighth and sixteenth notes.

25



Musical notation for Ruggiero, ninth system. The staff is in bass clef. The music continues with eighth and sixteenth notes.

28

31

34

37

40

42

44

46


49

53

The image displays a musical score for a bass clef instrument, consisting of ten staves of music. Each staff begins with a measure number: 28, 31, 34, 37, 40, 42, 44, 46, 49, and 53. The music is written in a key signature of one sharp (F#) and a common time signature (C). The notation includes various rhythmic values such as eighth and sixteenth notes, often beamed together, and rests. The piece concludes with a double bar line at the end of the final staff.

VIOLONE 

BERGAMASCA PER LA LETTERA.B.

4 

8 

11 

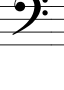
14 

17 

20 

23 

25 

27 

29 

31 

33 

36 

VIOLONE bass clef $\frac{3}{4}$

CHIACONA PER LA LETTERA.B.

5

11

17

23

26

29

33

37

40

44

48

VIOLONE

CAPRITIO SOPRA OTTO FIGURE

4

7

10

13

16

19

22

25

28

31

34

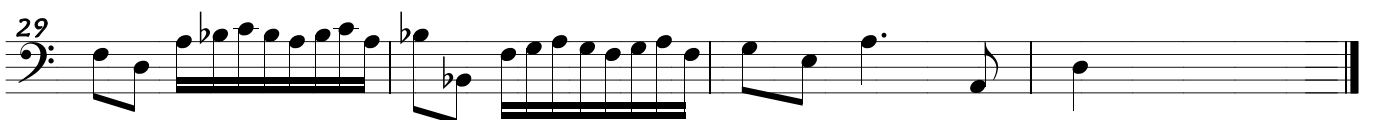
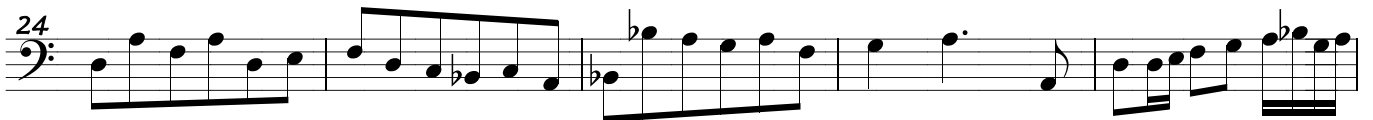
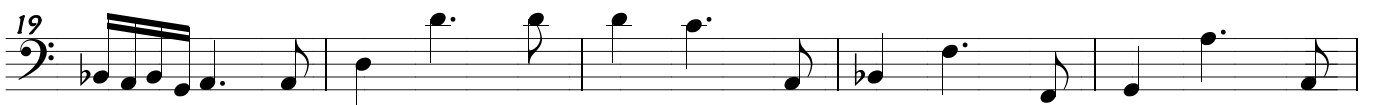
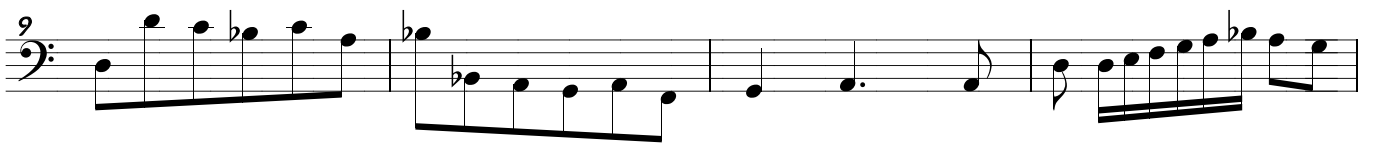
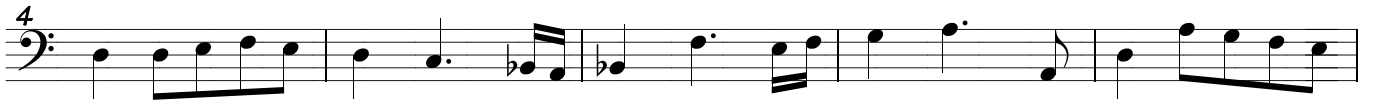
37

VIOLONE

CAPRITIO SOPRA LI CINQUE TEMPI

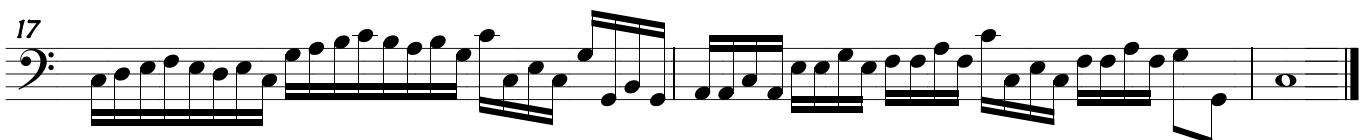
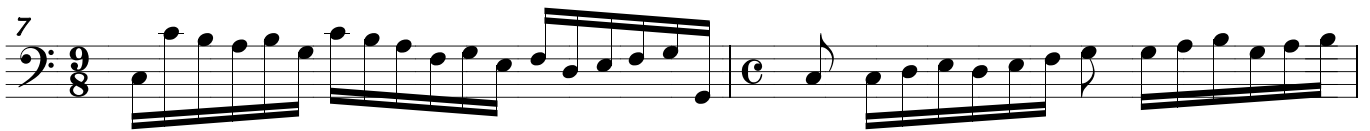


PASSAGLIA PER LA LETTERA.E.



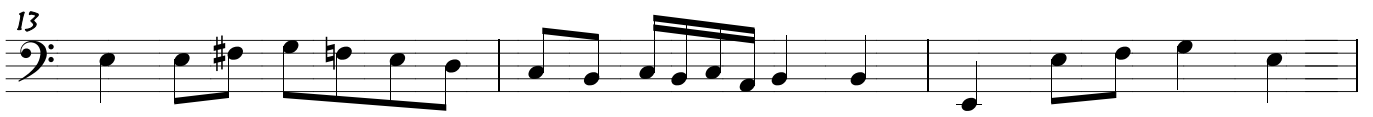
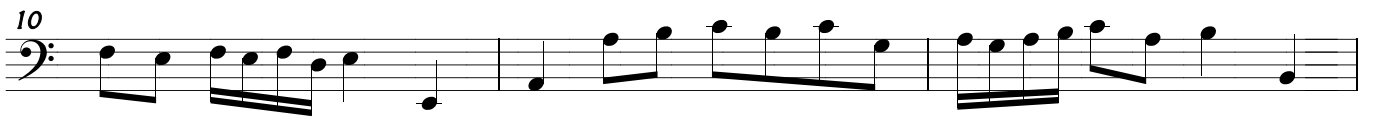


CAPRITIO





PASSO E MEZZO PER LA LETTERA.D.



3

6

9

12

15

18

21

24

27

30

A musical score for a bass clef instrument, likely a double bass, in common time (C). The score consists of ten staves, each containing four measures of music. The first staff begins with a treble clef and a common time signature. The music is written in a single line on a bass clef staff. The notes are primarily eighth and sixteenth notes, often beamed together in groups. The key signature is one sharp (F#), and the time signature is common time (C). The score ends with a double bar line and a fermata over the final note in the 30th measure.

3

6

9

12

15

18

21

24

27

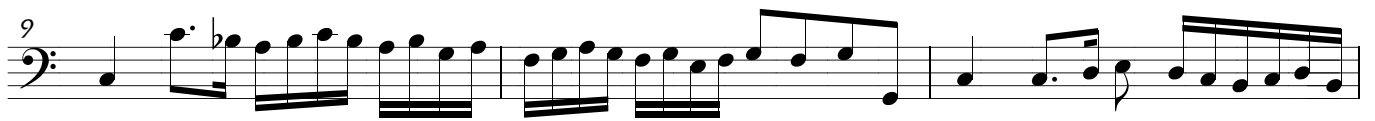
30

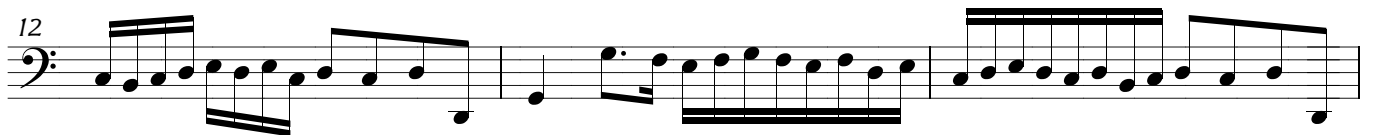
VIOLONE 

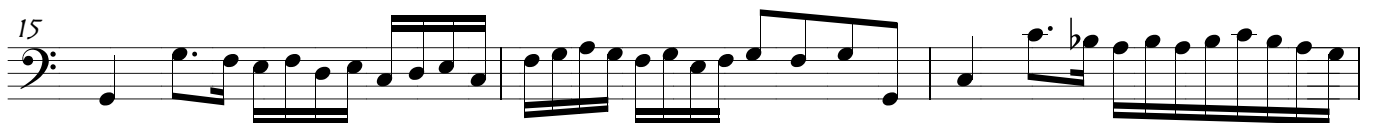
PASSO, E MEZZO PER B QUADRO SOPRA LA LETTERA. B.



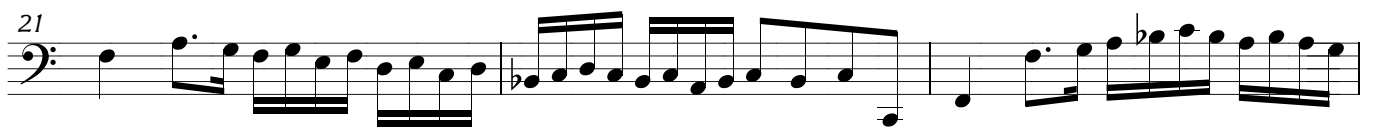




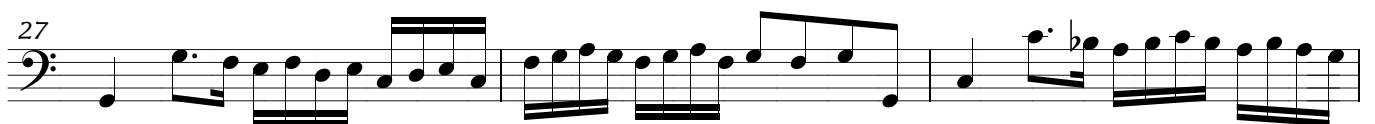














1

4

7

10

13

16

19

22

25

28

30

The image shows a musical score for a bass clef instrument in 12/8 time. The score consists of ten staves, each containing three measures of music. The first measure of the first staff is marked with a '1'. The time signature '12/8' is indicated at the beginning of the first staff. The music is written in a key with one flat (B-flat). The notes are primarily eighth and sixteenth notes, often beamed together. The score ends with a double bar line at the end of the 30th measure.

A musical score for a bass clef instrument in common time (C). The score consists of 32 measures, organized into 10 staves. The first staff starts with a common time signature 'C'. The key signature has one flat (B-flat). The music features a mix of eighth and sixteenth notes, often beamed together in groups. Measure numbers 4, 7, 10, 13, 16, 19, 22, 25, 28, and 31 are indicated at the beginning of their respective staves. The piece concludes with a double bar line at the end of the 32nd measure.