



Bernard Dewagtere

France, SIN LE NOBLE

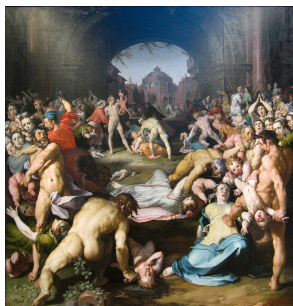
The Coventry Carol (Lullay, Thou little tiny Child) Traditional

A propos de l'artiste

Docteur en musicologie, chef d'orchestre et compositeur.
Compositions et arrangements de toutes époques, dans tous les styles ou genres musicaux et pour n'importe quelles formations instrumentales ou vocales.

Qualification : Docteur en Musicologie
Sociétaire : SACEM - Code IPI artiste : 342990
Page artiste : https://www.free-scores.com/partitions_gratuites_bernard-dewagtere.htm

A propos de la pièce



Titre : The Coventry Carol
[Lullay, Thou little tiny Child]
Compositeur : Traditional
Arrangeur : Dewagtere, Bernard
Droit d'auteur : Copyright © Bernard Dewagtere
Editeur : Dewagtere, Bernard
Instrumentation : Trompette en ut, piano ou orgue
Style : Noel

Bernard Dewagtere sur [free-scores.com](https://www.free-scores.com)

LICENCE

Cette partition nécessite une autorisation :

- pour les représentations publiques
- pour l'utilisation par les professeurs

S'acquies de cette licence sur :

<https://www.free-scores.com/licence?p=ap28ks0dkF>



- écouter l'audio
- partager votre interprétation
- commenter la partition
- s'acquies de la licence
- contacter l'artiste

Interdiction de diffusion sur d'autres sites Web.

The Coventry Carol

Lullay, Thou little tiny Child

Old English Carol (16th Century)

Arr. : Bernard Dewagtere

Trompette en Ut

Piano

pp

This system contains the first six measures of the score. The Trompette en Ut part is a single staff with a treble clef, a key signature of two flats (B-flat and E-flat), and a 3/4 time signature. It contains six whole rests. The Piano part consists of two staves (treble and bass clefs) with a grand staff brace. The right hand plays chords in the treble clef, and the left hand plays a simple bass line. The dynamic marking *pp* is placed below the first measure.

Trp. (Ut)

Pno

7

This system contains measures 7 through 12. The Trp. (Ut) part is a single staff with a treble clef, a key signature of two flats, and a 3/4 time signature. It contains six whole rests. The Pno part consists of two staves (treble and bass clefs) with a grand staff brace. The right hand plays chords and single notes, and the left hand plays a bass line. Measure numbers 7 and 12 are written above the first and last measures of the system, respectively.

Trp. (Ut)

Pno

13

p

This system contains measures 13 through 18. The Trp. (Ut) part is a single staff with a treble clef, a key signature of two flats, and a 3/4 time signature. It contains six whole rests. The Pno part consists of two staves (treble and bass clefs) with a grand staff brace. The right hand plays chords and single notes, and the left hand plays a bass line. Measure numbers 13 and 18 are written above the first and last measures of the system, respectively. The dynamic marking *p* is placed above the first measure of the piano part.

The Coventry Carol

2
19

Trp. (Ut)

Pno

25

Trp. (Ut)

Pno

31

Trp. (Ut)

Pno

mp

37

Trp. (Ut)

Pno

The Coventry Carol

43 *mf*

Trp. (Ut)

Pno

49

Trp. (Ut)

Pno

55

Trp. (Ut)

Pno

61 *f*

Trp. (Ut)

Pno

The Coventry Carol

4
67

Trp. (Ut)

Pno

73

Trp. (Ut)

Pno

pp

79

Trp. (Ut)

Pno

85

Trp. (Ut)

Pno

rit.