



# Bernard Dewagtere

France, SIN LE NOBLE

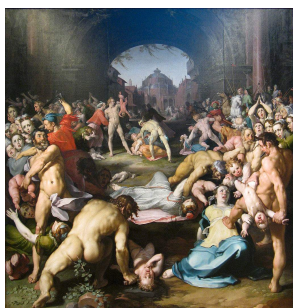
## The Coventry Carol (Lullay, Thou little tiny Child) Traditional

### A propos de l'artiste

Docteur en musicologie, chef d'orchestre et compositeur.  
Compositions et arrangements de toutes époques, dans tous les styles ou genres musicaux et pour n'importe quelles formations instrumentales ou vocales.

**Qualification :** Docteur en Musicologie  
**Sociétaire :** SACEM - Code IPI artiste : 342990  
**Page artiste :** [https://www.free-scores.com/partitions\\_gratuites\\_bernard-dewagtere.htm](https://www.free-scores.com/partitions_gratuites_bernard-dewagtere.htm)

### A propos de la pièce



**Titre :** The Coventry Carol  
[Lullay, Thou little tiny Child]  
**Compositeur :** Traditional  
**Arrangeur :** Dewagtere, Bernard  
**Droit d'auteur :** Copyright © Bernard Dewagtere  
**Editeur :** Dewagtere, Bernard  
**Instrumentation :** Clarinette Basse et Piano  
**Style :** Noel  
**Commentaire :** The Coventry Carol is an English Christmas carol dating from the 16th century. The carol was traditionally performed in Coventry in England as part of a mystery play called The Pageant of the Shearmen and Tailors. The play depicts the Christmas story from chapter two in the Gospel of Matthew: the carol itself refers to the Massacre of the Innocents, in which Herod ordered all male infants under the age of two in Bethlehem to be killed, and take... (la suite en ligne)

Bernard Dewagtere sur [free-scores.com](https://www.free-scores.com)

#### LICENCE

Cette partition nécessite une autorisation :  
- pour les représentations publiques  
- pour l'utilisation par les professeurs

**S'acquitter de cette licence sur :**

<https://www.free-scores.com/licence?p=aUCABeezws>



- écouter l'audio
- partager votre interprétation
- commenter la partition
- s'acquitter de la licence
- contacter l'artiste

Interdiction de diffusion sur d'autres sites Web.

# The Coventry Carol

Lullay, Thou little tiny Child

Old English Carol (16th Century)

Arr. : Bernard Dewagtere

Clarinet Basse

Piano

pp

This system contains the first six measures of the piece. The Clarinet Basse part is a single staff with a treble clef and a 3/4 time signature, showing rests for all six measures. The Piano part consists of two staves (treble and bass clefs) with a 3/4 time signature and a key signature of two flats. The piano part begins with a *pp* dynamic marking. The right hand plays chords and single notes, while the left hand plays a simple bass line.

Cl. B.

Pno

This system contains measures 7 through 12. The Clarinet Basse part (Cl. B.) has a treble clef and shows rests for measures 7-11, followed by a note in measure 12. The Piano part (Pno) continues with two staves. The right hand features more complex chordal textures and melodic lines, while the left hand maintains a steady bass line. The key signature remains two flats.

Cl. B.

Pno

This system contains measures 13 through 18. The Clarinet Basse part (Cl. B.) has a treble clef and shows rests for measures 13-15, followed by a melodic line in measures 16-18. The Piano part (Pno) continues with two staves. The right hand has a melodic line with some grace notes, and the left hand has a bass line. A *p* dynamic marking is present in both parts. The key signature remains two flats.

The Coventry Carol

Cl. B. <sup>2</sup>/<sub>19</sub>

Pno

19

Detailed description: This system covers measures 19 to 24. The Clarinet in B-flat (Cl. B.) part begins with a treble clef and a key signature of two flats. It features a melodic line with a half note G4, quarter notes A4, B4, and C5, followed by a half note G4 and quarter notes F4, E4, and D4. The piano accompaniment (Pno) consists of two staves. The right hand plays chords in the treble clef, while the left hand plays a bass line in the bass clef. Measure 19 starts with a half note G3 and quarter notes F3, E3, and D3. The piano part includes various chordal textures and melodic fragments.

Cl. B. <sup>25</sup>

Pno

25

Detailed description: This system covers measures 25 to 30. The Cl. B. part continues with a melodic line: quarter notes D4, E4, and F4, followed by a half note G4 and quarter notes A4, B4, and C5. The piano accompaniment continues with chords and a bass line. Measure 25 starts with a half note G3 and quarter notes F3, E3, and D3. The piano part features more complex chordal structures and melodic lines in both hands.

Cl. B. <sup>31</sup> *mp*

Pno

31

*mp*

Detailed description: This system covers measures 31 to 36. The Cl. B. part has a melodic line: quarter notes D4, E4, and F4, followed by a half note G4 and quarter notes A4, B4, and C5. The piano accompaniment continues with chords and a bass line. Measure 31 starts with a half note G3 and quarter notes F3, E3, and D3. The piano part includes various chordal textures and melodic fragments. The dynamic marking *mp* (mezzo-piano) is present.

Cl. B. <sup>37</sup>

Pno

37

Detailed description: This system covers measures 37 to 42. The Cl. B. part has a melodic line: quarter notes D4, E4, and F4, followed by a half note G4 and quarter notes A4, B4, and C5. The piano accompaniment continues with chords and a bass line. Measure 37 starts with a half note G3 and quarter notes F3, E3, and D3. The piano part includes various chordal textures and melodic fragments.

The Coventry Carol

43 *mf*

Cl. B.

Pno

49

Cl. B.

Pno

55

Cl. B.

Pno

61 *f*

Cl. B.

Pno

The Coventry Carol

4  
67

Cl. B.

Pno

73

Cl. B.

Pno

79

Cl. B.

Pno

85

Cl. B.

Pno

*rit.*