



# Bernard Dewagtere

France, SIN LE NOBLE

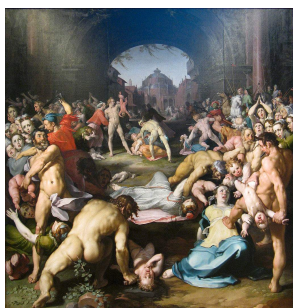
## The Coventry Carol (Lullay, Thou little tiny Child) Traditional

### A propos de l'artiste

Docteur en musicologie, chef d'orchestre et compositeur.  
Compositions et arrangements de toutes époques, dans tous les styles ou genres musicaux et pour n'importe quelles formations instrumentales ou vocales.

**Qualification :** Docteur en Musicologie  
**Sociétaire :** SACEM - Code IPI artiste : 342990  
**Page artiste :** [https://www.free-scores.com/partitions\\_gratuites\\_bernard-dewagtere.htm](https://www.free-scores.com/partitions_gratuites_bernard-dewagtere.htm)

### A propos de la pièce



**Titre :** The Coventry Carol  
[Lullay, Thou little tiny Child]  
**Compositeur :** Traditional  
**Arrangeur :** Dewagtere, Bernard  
**Droit d'auteur :** Copyright © Bernard Dewagtere  
**Editeur :** Dewagtere, Bernard  
**Instrumentation :** Harpe  
**Style :** Noel  
**Commentaire :** The Coventry Carol is an English Christmas carol dating from the 16th century. The carol was traditionally performed in Coventry in England as part of a mystery play called The Pageant of the Shearmen and Tailors. The play depicts the Christmas story from chapter two in the Gospel of Matthew: the carol itself refers to the Massacre of the Innocents, in which Herod ordered all male infants under the age of two in Bethlehem to be killed, and take... (la suite en ligne)

### Bernard Dewagtere sur [free-scores.com](https://www.free-scores.com)

#### LICENCE

Cette partition nécessite une autorisation :  
- pour les représentations publiques  
- pour l'utilisation par les professeurs

**S'acquitter de cette licence sur :**

<https://www.free-scores.com/licence?p=ahKrf8PWK3>



- écouter l'audio
- partager votre interprétation
- commenter la partition
- s'acquitter de la licence
- contacter l'artiste

Interdiction de diffusion sur d'autres sites Web.

# The Coventry Carol

Lullay, Thou little tiny Child    Old English Carol (16th Century)  
Arr. : Bernard Dewagtere

Harp

*pp*

The first system of the harp part consists of measures 1 through 8. It is written in a grand staff with a treble and bass clef. The key signature has two flats (B-flat and E-flat), and the time signature is 3/4. The music features a mix of chords and single notes, with a dynamic marking of *pp* (pianissimo) at the beginning.

The second system of the harp part consists of measures 9 through 17. It continues the melodic and harmonic development from the first system. A dynamic marking of *p* (piano) appears in measure 15.

The third system of the harp part consists of measures 18 through 26. The notation includes various chordal textures and melodic lines, maintaining the piece's gentle character.

The fourth system of the harp part consists of measures 27 through 35. A dynamic marking of *mp* (mezzo-piano) is present in measure 29. The system concludes with a final chord in measure 35.

The fifth system of the harp part consists of measures 36 through 44. This system contains the final measures of the piece, ending with a sustained chord in measure 44.

The Coventry Carol

2  
45

*mf*

54

*f*

63

*pp*

73

*pp*

82

*pp*