



Bernard Dewagtere

France, SIN LE NOBLE

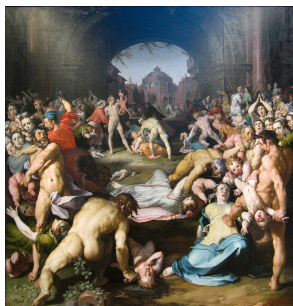
The Coventry Carol (Lullay, Thou little tiny Child) Traditional

A propos de l'artiste

Docteur en musicologie, chef d'orchestre et compositeur.
Compositions et arrangements de toutes époques, dans tous les styles ou genres musicaux et pour n'importe quelles formations instrumentales ou vocales.

Qualification : Docteur en Musicologie
Sociétaire : SACEM - Code IPI artiste : 342990
Page artiste : https://www.free-scores.com/partitions_gratuites_bernard-dewagtere.htm

A propos de la pièce



Titre : The Coventry Carol
[Lullay, Thou little tiny Child]
Compositeur : Traditional
Arrangeur : Dewagtere, Bernard
Droit d'auteur : Copyright © Bernard Dewagtere
Editeur : Dewagtere, Bernard
Instrumentation : Piano seul
Style : Noel
Commentaire : The Coventry Carol is an English Christmas carol dating from the 16th century. The carol was traditionally performed in Coventry in England as part of a mystery play called The Pageant of the Shearmen and Tailors. The play depicts the Christmas story from chapter two in the Gospel of Matthew: the carol itself refers to the Massacre of the Innocents, in which Herod ordered all male infants under the age of two in Bethlehem to be killed, and take... (la suite en ligne)

Bernard Dewagtere sur [free-scores.com](https://www.free-scores.com)

LICENCE

Cette partition nécessite une autorisation :
- pour les représentations publiques
- pour l'utilisation par les professeurs

S'acquies de cette licence sur :

<https://www.free-scores.com/licence?p=aBX4d51gXv>



- écouter l'audio
- partager votre interprétation
- commenter la partition
- s'acquies de la licence
- contacter l'artiste

Interdiction de diffusion sur d'autres sites Web.

The Coventry Carol

Lullay, Thou little tiny Child Old English Carol (16th Century)
Arr. : Bernard Dewagtere

Piano

pp

The first system of the piano accompaniment, starting at measure 1. It features a treble and bass clef with a key signature of two flats and a 3/4 time signature. The music consists of chords and simple melodic lines in both hands. A piano (*pp*) dynamic marking is present.

The second system of the piano accompaniment, starting at measure 9. It continues the harmonic and melodic development. A piano (*p*) dynamic marking is present.

The third system of the piano accompaniment, starting at measure 18. It continues the harmonic and melodic development.

The fourth system of the piano accompaniment, starting at measure 27. It continues the harmonic and melodic development. A mezzo-piano (*mp*) dynamic marking is present.

The fifth system of the piano accompaniment, starting at measure 36. It concludes the piece with a final chord in the bass clef.

The Coventry Carol

2
45

mf

54

f

63

pp

73

pp

82

pp