



# Corentin Mathieu

Arrangeur, Compositeur, Interprete, Professeur

Belgique

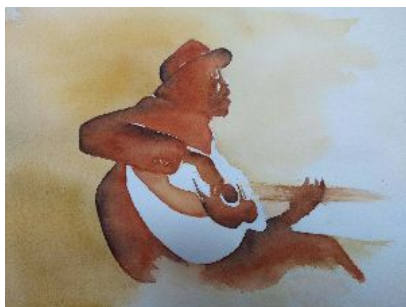
## A propos de l'artiste

J'enseigne la guitare depuis une quinzaine d'années au Conservatoire de Namur en Belgique. Parallèlement, j'adore composer et faire des arrangements pour guitare classique et/ou des petits ensembles...

**Qualification :** Licence en musique, spécialité guitare

**Page artiste :** [https://www.free-scores.com/partitions\\_gratuites\\_core.htm](https://www.free-scores.com/partitions_gratuites_core.htm)

## A propos de la pièce



**Titre :** Scarborough Fair  
**Compositeur :** Traditional  
**Arrangeur :** Mathieu, Corentin  
**Droit d'auteur :** Copyright © Corentin Mathieu  
**Editeur :** Mathieu, Corentin  
**Instrumentation :** Guitare seule (notation standard)  
**Style :** Traditionnel

Corentin Mathieu sur [free-scores.com](https://www.free-scores.com)



Cette partition ne fait pas partie du domaine public. Merci de contacter l'artiste pour toute utilisation hors du cadre privé.

**Interdiction de diffusion sur d'autres sites Web.**



- écouter l'audio
- partager votre interprétation
- commenter la partition
- contacter l'artiste

# Scarborough Fair

English Trad.

Arr. Corentin Mathieu

Measures 1-6 of the score. The music is in 3/4 time. The first staff shows a treble clef and a key signature of one sharp (F#). The melody begins with a quarter note G4, followed by quarter notes A4, B4, and C5. The bass line consists of a series of chords: G2-B2, A2-C3, B2-D3, and C3-E3. Fingering numbers 0, 2, 3, 1, 3, and 1 are indicated below the notes.

Measures 7-12 of the score. The melody continues with a quarter note D5, followed by quarter notes E5, F#5, and G5. The bass line features chords: D3-F3, E3-G3, F3-A3, and G3-B3. Fingering numbers 3, 2, 1, 4, 3, 4, 3, 2, and 1 are indicated.

Measures 13-19 of the score. The melody includes a dotted quarter note G5, followed by quarter notes A5, B5, and C6. The bass line has chords: D3-F3, E3-G3, F3-A3, and G3-B3. A fermata is placed over the final note of the melody. Fingering numbers 1, 2, 3, 4, 3, 2, 4, 2, and 4 are indicated.

Measures 20-25 of the score. The melody features a dotted quarter note D6, followed by quarter notes E6, F#6, and G6. The bass line consists of eighth-note chords: D3-F3, E3-G3, F3-A3, and G3-B3. Fingering numbers 3, 4, 3, 2, 4, 3, 2, 3, and 1 are indicated.

Measures 26-31 of the score. The melody continues with a dotted quarter note A6, followed by quarter notes B6, C7, and D7. The bass line has eighth-note chords: D3-F3, E3-G3, F3-A3, and G3-B3. Fingering numbers 3, 1, 2, 3, 4, 3, 2, 4, 2, and 4 are indicated.

Measures 32-36 of the score. The melody includes a dotted quarter note E7, followed by quarter notes F#7, G7, and A7. The bass line features eighth-note chords: D3-F3, E3-G3, F3-A3, and G3-B3. A fermata is placed over the final note of the melody. Fingering numbers 4, 3, 1, 3, 2, 4, 3, 2, and 4 are indicated.

Measures 37-40 of the score. The melody concludes with a dotted quarter note B7, followed by quarter notes C8, D8, and E8. The bass line has chords: D3-F3, E3-G3, F3-A3, and G3-B3. Fingering numbers 3, 4, 2, 1, 4, 1, 4, 2, 3, and 4 are indicated. Above the staff, the text "Pos. IX" and "1/2 BVII" is written. A circled number 2 is also present.

