



Bernard Dewagtere

France, SIN LE NOBLE

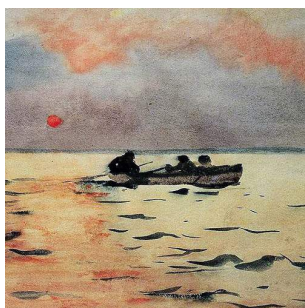
Michael Row the Boat Ashore Traditional

A propos de l'artiste

Docteur en musicologie, chef d'orchestre et compositeur.
Compositions et arrangements de toutes époques, dans tous les styles ou genres musicaux et pour n'importe quelles formations instrumentales ou vocales.

Qualification : Docteur en Musicologie
Sociétaire : SACEM - Code IPI artiste : 342990
Page artiste : https://www.free-scores.com/partitions_gratuites_bernard-dewagtere.htm

A propos de la pièce



Titre : Michael Row the Boat Ashore
Compositeur : Traditional
Arrangeur : Dewagtere, Bernard
Droit d'auteur : Copyright © Bernard Dewagtere
Editeur : Dewagtere, Bernard
Instrumentation : Flûte de Pan, piano ou orgue
Style : Gospel

Bernard Dewagtere sur [free-scores.com](https://www.free-scores.com)

LICENCE

Cette partition nécessite une autorisation :
- pour les représentations publiques
- pour l'utilisation par les professeurs

S'acquies de cette licence sur :
<https://www.free-scores.com/licence?p=aAoC2ZNyIA>



- écouter l'audio
- partager votre interprétation
- commenter la partition
- s'acquies de la licence
- contacter l'artiste

Interdiction de diffusion sur d'autres sites Web.

Michael Row the Boat Ashore

Afro-American spiritual (1867)

Arr. : Bernard Dewagtere

$\text{♩} = 70$

Pan Flute

Piano

Musical score for the first system, measures 1-4. The Pan Flute part is in the upper staff, mostly silent with a few notes at the end. The Piano part consists of two staves (treble and bass clef) with complex chordal accompaniment.

Pan Fl.

Pno

Musical score for the second system, measures 5-8. The Pan Flute part has a melodic line with a fermata. The Piano part continues with chordal accompaniment.

Pan Fl.

Pno

Musical score for the third system, measures 9-12. The Pan Flute part has a melodic line with a first ending bracket. The Piano part continues with chordal accompaniment.

Michael Row the Boat Ashore

Pan Fl.

Pno

2
13

2.

13

2.

Detailed description: This system contains the first 13 measures of the piece. The Pan Flute part (top staff) begins with a treble clef, a key signature of one flat (B-flat), and a 2/3 time signature. It features a melodic line with a first ending bracket over measures 2-12 and a second ending bracket over measures 11-13. The Piano accompaniment (bottom staves) consists of two staves with a grand staff clef, providing harmonic support with chords and single notes.

Pan Fl.

Pno

17

17

Detailed description: This system contains measures 17 through 20. The Pan Flute part continues its melodic line with a long slur over measures 17-19. The Piano accompaniment continues with a steady harmonic accompaniment.

Pan Fl.

Pno

21

21

1.

2.

1.

2.

Detailed description: This system contains the final four measures (21-24) of the piece. Both the Pan Flute and Piano parts feature first and second endings. The Pan Flute part has a first ending bracket over measures 21-23 and a second ending bracket over measures 23-24. The Piano accompaniment also has corresponding first and second endings.