



Ralf Behrens

Allemagne, Edewecht

Es kommt ein Schiff, geladen (in C - low) Traditional

A propos de l'artiste

Hello, my name is Ralf Behrens, born in 1958. My instruments are the guitar, the church organ, several recorders and some more. Especially for my pupils and a few small music ensembles I arrange pieces of music for studying and/or performing. Feel free to use my arrangements, but – of course – donations are welcome. Have fun.

Page artiste : https://www.free-scores.com/partitions_gratuites_ralfbehrens.htm

A propos de la pièce



Titre :	Es kommt ein Schiff, geladen [in C - low]
Compositeur :	Traditional
Arrangeur :	Behrens, Ralf
Droit d'auteur :	Copyright © Ralf Behrens
Editeur :	Behrens, Ralf
Instrumentation :	Trompette et Guitare
Style :	Noel

Ralf Behrens sur [free-scores.com](https://www.free-scores.com)



Cette partition ne fait pas partie du domaine public. Merci de contacter l'artiste pour toute utilisation hors du cadre privé.

Interdiction de diffusion sur d'autres sites Web.



- écouter l'audio
- partager votre interprétation
- commenter la partition
- contacter l'artiste

Es kommt ein Schiff, geladen

Traditional (Arr.: Ralf Behrens)

www.ra-be-musik-und-mehr.de - ©2015 RaBe

♩ = c. 115

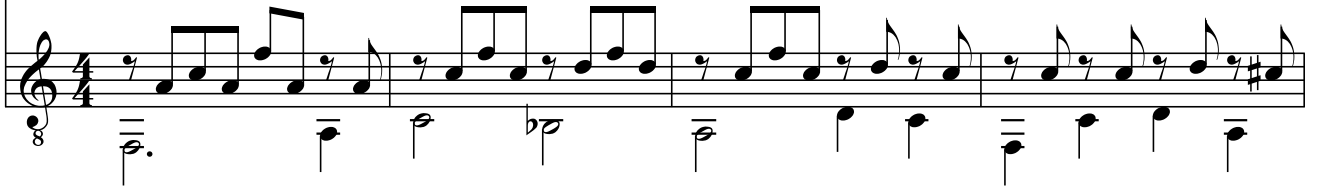
Trumpet in C



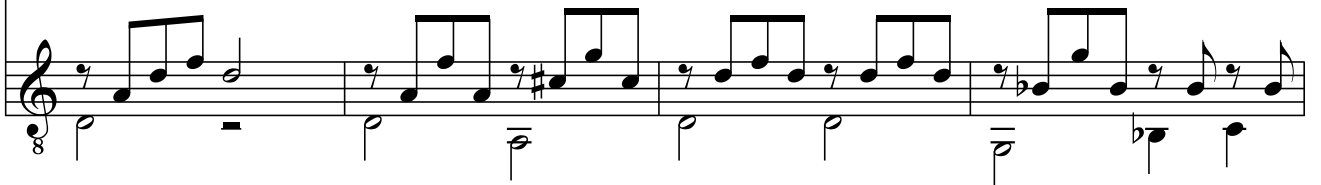
Guitar



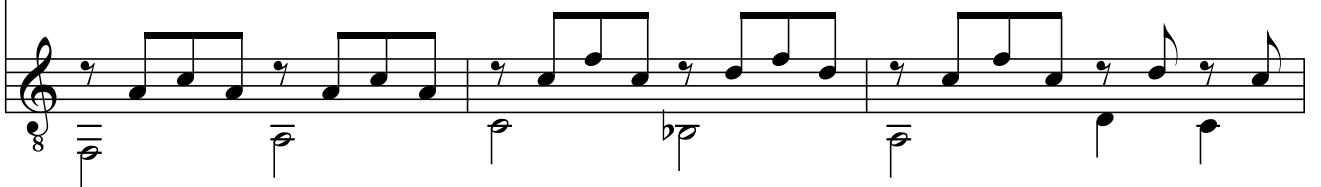
4



8



12



15



Es kommt ein Schiff, geladen
www.ra-be-musik-und-mehr.de - ©2015 RaBe

2

19

Measures 19-21. The top staff is in treble clef with a key signature of one flat (B-flat). The bottom staff is in bass clef. The music features a melody in the upper voice and a bass line in the lower voice. Measure 19 starts with a half note G4, followed by quarter notes A4, B4, and C5. Measure 20 has a half note D5, a quarter note E5, and a quarter rest. Measure 21 has a half note F5, a quarter note G5, and a quarter note A5. The bass line consists of half notes: G2, F2, E2, D2, C2, B1, A1, G1.

22

Measures 22-24. The top staff continues the melody. Measure 22 has a half note B4, a quarter note A4, and a quarter note G4. Measure 23 has a half note F4, a quarter note E4, and a quarter note D4. Measure 24 has a half note C4, a quarter note B3, and a quarter note A3. The bass line continues with half notes: F1, E1, D1, C1, B0, A0, G0, F0.

25

Measures 25-27. The top staff continues the melody. Measure 25 has a half note G3, a quarter note F3, and a quarter note E3. Measure 26 has a half note D3, a quarter note C3, and a quarter note B2. Measure 27 has a half note A2, a quarter note G2, and a quarter note F2. The bass line continues with half notes: E0, D0, C0, B0, A0, G0, F0, E0.

28

Measures 28-32. The top staff continues the melody. Measure 28 has a half note E2, a quarter note D2, and a quarter note C2. Measure 29 has a half note B1, a quarter note A1, and a quarter note G1. Measure 30 has a half note F1, a quarter note E1, and a quarter note D1. Measure 31 has a half note C1, a quarter note B0, and a quarter note A0. Measure 32 has a half note G0, a quarter note F0, and a quarter note E0. The bass line continues with half notes: D0, C0, B0, A0, G0, F0, E0, D0.

33

Measures 33-35. The top staff continues the melody. Measure 33 has a half note D0, a quarter note C0, and a quarter note B0. Measure 34 has a half note A0, a quarter note G0, and a quarter note F0. Measure 35 has a half note E0, a quarter note D0, and a quarter note C0. The bass line continues with half notes: C0, B0, A0, G0, F0, E0, D0, C0. The piece ends with a double bar line and repeat sign.