



# Richard Kearns

Irlande, Ballybofey

## Good King Wenceslas Traditional

### A propos de l'artiste

Due to loss of use of hands I will be unable to transpose, arrange or otherwise modify my music in here. Further compositions will be very very slow in appearing here.....Thanks for all the support.

Teachers and students may use my music and arrangements to study and practice without further adieu.....All public performances must seek permission first.

THANKS FOR THE DONATIONS.

They keep me going.

**Page artiste :** [https://www.free-scores.com/partitions\\_gratuites\\_guiriel.htm](https://www.free-scores.com/partitions_gratuites_guiriel.htm)

### A propos de la pièce



**Titre :** Good King Wenceslas  
**Compositeur :** Traditional  
**Arrangeur :** Kearns, Richard  
**Droit d'auteur :** Richard Kearns © All rights reserved  
**Editeur :** Kearns, Richard  
**Instrumentation :** Quintette à vent : Flûte, Clarinette, Hautbois, Cor, Basson  
**Style :** Noel

### Richard Kearns sur [free-scores.com](https://www.free-scores.com)



Cette partition ne fait pas partie du domaine public. Merci de contacter l'artiste pour toute utilisation hors du cadre privé.



- écouter l'audio
- partager votre interprétation
- commenter la partition
- contacter l'artiste

# Good King Wenceslas

Traditional.

Arranged Richard Kearns  
Copyright © 2009 Richard Kearns

1

1: Flute

2: Oboe

3: B-flat Clarinet

4: French Horn

5: Bassoon

5

1: Flute

2: Oboe

3: B-flat Clarinet

4: French Horn

5: Bassoon

9

1: Flute

2: Oboe

3: B-flat Clarinet

4: French Horn

5: Bassoon

13

1: Flute

2: Oboe

3: B-flat Clarinet

4: French Horn

5: Bassoon

17

Musical staff for Flute 1, measures 17-20. The staff contains a sequence of eighth and quarter notes, including a sharp sign in the fourth measure.

1: Flute

Musical staff for Oboe 2, measures 17-20. The staff contains eighth and quarter notes in the first two measures, followed by rests in the last two measures.

2: Oboe

Musical staff for B-flat Clarinet 3, measures 17-20. The staff contains a sequence of quarter and eighth notes, including a sharp sign in the second measure.

3: B-flat Clarinet

Musical staff for French Horn 4, measures 17-20. The staff contains quarter notes in the first two measures, followed by rests in the last two measures.

4: French Horn

Musical staff for Bassoon 5, measures 17-20. The staff contains rests in the first two measures, followed by a sequence of quarter notes in the last two measures.

5: Bassoon

21

Musical staff for Flute 1, measures 21-24. The staff features a long melodic line with a slur over the first two measures and a thick black bar under the last two measures.

1: Flute

Musical staff for Oboe 2, measures 21-24. The staff contains a rest for the entire duration.

2: Oboe

Musical staff for B-flat Clarinet 3, measures 21-24. The staff contains a rest for the entire duration.

3: B-flat Clarinet

Musical staff for French Horn 4, measures 21-24. The staff contains quarter notes in the first and third measures, followed by rests in the second and fourth measures.

4: French Horn

Musical staff for Bassoon 5, measures 21-24. The staff contains quarter notes in the first and third measures, followed by a thick black bar under the last two measures.

5: Bassoon

22

1: Flute

2: Oboe

3: B-flat Clarinet

4: French Horn

5: Bassoon

26

1: Flute

2: Oboe

3: B-flat Clarinet

4: French Horn

5: Bassoon

27

1: Flute

Musical staff for Flute 1, measure 27. The staff is in treble clef with a key signature of one sharp (F#). The melody begins with a half note G4, followed by a quarter note A4, a quarter note B4, and a quarter note C5. A fermata is placed over the G4. The staff then continues with a quarter rest, a quarter note D5, and a quarter note E5. A thick black bar is drawn under the notes from G4 to E5.

2: Oboe

Musical staff for Oboe 2, measure 27. The staff is in treble clef with a key signature of one sharp (F#). It contains a whole rest.

3: B-flat Clarinet

Musical staff for B-flat Clarinet 3, measure 27. The staff is in treble clef with a key signature of two sharps (F# and C#). It contains a whole rest.

4: French Horn

Musical staff for French Horn 4, measure 27. The staff is in treble clef with a key signature of one sharp (F#). The melody begins with a quarter note G4, followed by a quarter rest, a quarter note A4, a quarter note B4, and a quarter note C5. A fermata is placed over the G4. The staff then continues with a quarter note D5, a quarter note E5, a quarter note F#5, and a quarter note G5. A thick black bar is drawn under the notes from G4 to G5.

5: Bassoon

Musical staff for Bassoon 5, measure 27. The staff is in bass clef with a key signature of one sharp (F#). It contains a whole rest.

28

1: Flute

Musical staff for Flute 1, measure 28. The staff is in treble clef with a key signature of one sharp (F#). The melody begins with a dotted quarter note G4, followed by an eighth note A4, an eighth note B4, and an eighth note C5. A fermata is placed over the G4. The staff then continues with a dotted quarter note D5, an eighth note E5, an eighth note F#5, and an eighth note G5. A thick black bar is drawn under the notes from G4 to G5.

2: Oboe

Musical staff for Oboe 2, measure 28. The staff is in treble clef with a key signature of one sharp (F#). It contains a whole rest.

3: B-flat Clarinet

Musical staff for B-flat Clarinet 3, measure 28. The staff is in treble clef with a key signature of two sharps (F# and C#). The melody begins with a quarter note G4, followed by a quarter note A4, a quarter note B4, and a quarter note C5. A fermata is placed over the G4. The staff then continues with a quarter note D5, a quarter note E5, a quarter note F#5, and a quarter note G5. A thick black bar is drawn under the notes from G4 to G5.

4: French Horn

Musical staff for French Horn 4, measure 28. The staff is in treble clef with a key signature of one sharp (F#). The melody begins with a quarter note G4, followed by a quarter note A4, a quarter note B4, and a quarter note C5. A fermata is placed over the G4. The staff then continues with a quarter note D5, a quarter note E5, a quarter note F#5, and a quarter note G5. A thick black bar is drawn under the notes from G4 to G5.

5: Bassoon

Musical staff for Bassoon 5, measure 28. The staff is in bass clef with a key signature of one sharp (F#). The melody begins with a quarter note G3, followed by a quarter note A3, a quarter note B3, and a quarter note C4. A fermata is placed over the G3. The staff then continues with a quarter note D4, a quarter note E4, a quarter note F#4, and a quarter note G4. A thick black bar is drawn under the notes from G3 to G4.

5:  
Bassoon

32

1: Flute

Musical staff for Flute 1, measures 32-35. The staff is in treble clef with a key signature of one sharp (F#). Measure 32: quarter note G4, quarter rest. Measure 33: quarter note A4, quarter note B4, quarter note C5, quarter note B4, quarter note A4, quarter note G4. Measure 34: quarter note G4, quarter note F#4, quarter note E4, quarter note D4. Measure 35: quarter note C4, quarter note B3, quarter note A3, quarter note G3.

2: Oboe

Musical staff for Oboe 2, measures 32-35. The staff is in treble clef with a key signature of one sharp (F#). Measure 32: quarter note G4, quarter rest. Measure 33: quarter note A4, quarter note B4, quarter note C5, quarter note B4, quarter note A4, quarter note G4. Measure 34: quarter note G4, quarter note F#4, quarter note E4, quarter note D4. Measure 35: quarter note C4, quarter note B3, quarter note A3, quarter note G3.

3: B-flat Clarinet

Musical staff for B-flat Clarinet 3, measures 32-35. The staff is in treble clef with a key signature of two sharps (F#, C#). Measure 32: whole rest. Measure 33: whole rest. Measure 34: whole rest. Measure 35: quarter note G3, quarter note F#3, quarter note E3, quarter note D3.

4: French Horn

Musical staff for French Horn 4, measures 32-35. The staff is in treble clef with a key signature of one sharp (F#). Measure 32: quarter note G4, quarter rest. Measure 33: quarter note A4, quarter note B4, quarter note C5, quarter note B4, quarter note A4, quarter note G4. Measure 34: quarter note G4, quarter note F#4, quarter note E4, quarter note D4. Measure 35: quarter note C4, quarter note B3, quarter note A3, quarter note G3.

5: Bassoon

Musical staff for Bassoon 5, measures 32-35. The staff is in bass clef with a key signature of one sharp (F#). Measure 32: quarter note G3, quarter rest. Measure 33: quarter note A3, quarter note B3, quarter note C4, quarter note B3, quarter note A3, quarter note G3. Measure 34: quarter note G3, quarter note F#3, quarter note E3, quarter note D3. Measure 35: quarter note C3, quarter note B2, quarter note A2, quarter note G2.

35

1: Flute

Musical staff for Flute 1, measures 35-38. The staff is in treble clef with a key signature of one sharp (F#). Measure 35: quarter note G4, quarter note A4, quarter note B4, quarter note C5, quarter note B4, quarter note A4, quarter note G4. Measure 36: quarter note G4, quarter note F#4, quarter note E4, quarter note D4. Measure 37: quarter note C4, quarter note B3, quarter note A3, quarter note G3. Measure 38: quarter note G3, quarter note F#3, quarter note E3, quarter note D3.

2: Oboe

Musical staff for Oboe 2, measures 35-38. The staff is in treble clef with a key signature of one sharp (F#). Measure 35: quarter note G4, quarter note A4, quarter note B4, quarter note C5, quarter note B4, quarter note A4, quarter note G4. Measure 36: quarter note G4, quarter note F#4, quarter note E4, quarter note D4. Measure 37: quarter note C4, quarter note B3, quarter note A3, quarter note G3. Measure 38: quarter note G3, quarter note F#3, quarter note E3, quarter note D3.

3: B-flat Clarinet

Musical staff for B-flat Clarinet 3, measures 35-38. The staff is in treble clef with a key signature of two sharps (F#, C#). Measure 35: quarter note G3, quarter note F#3, quarter note E3, quarter note D3. Measure 36: quarter note C3, quarter note B2, quarter note A2, quarter note G2. Measure 37: quarter note G2, quarter note F#2, quarter note E2, quarter note D2. Measure 38: quarter note C2, quarter note B1, quarter note A1, quarter note G1.

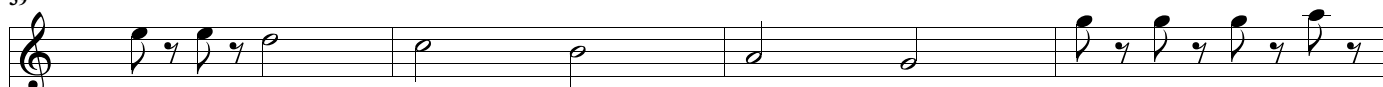
4: French Horn

Musical staff for French Horn 4, measures 35-38. The staff is in treble clef with a key signature of one sharp (F#). Measure 35: quarter note G4, quarter rest. Measure 36: quarter note A4, quarter note B4, quarter note C5, quarter note B4, quarter note A4, quarter note G4. Measure 37: quarter note G4, quarter note F#4, quarter note E4, quarter note D4. Measure 38: quarter note C4, quarter note B3, quarter note A3, quarter note G3.

5: Bassoon

Musical staff for Bassoon 5, measures 35-38. The staff is in bass clef with a key signature of one sharp (F#). Measure 35: quarter note G3, quarter note F#3, quarter note E3, quarter note D3. Measure 36: quarter note C3, quarter note B2, quarter note A2, quarter note G2. Measure 37: quarter note G2, quarter note F#2, quarter note E2, quarter note D2. Measure 38: quarter note C2, quarter note B1, quarter note A1, quarter note G1.

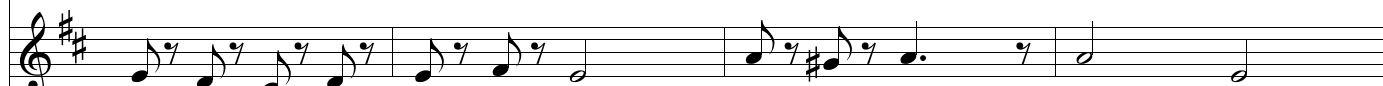
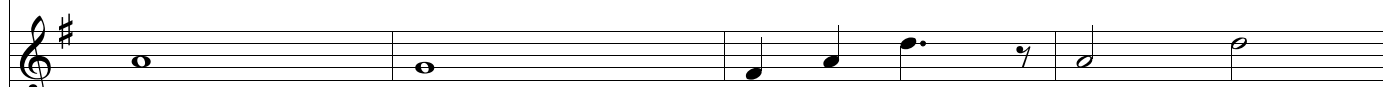
39



1: Flute



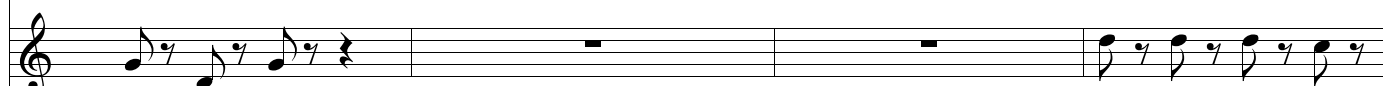
2: Oboe

3: B-flat  
Clarinet4: French  
Horn5:  
Bassoon

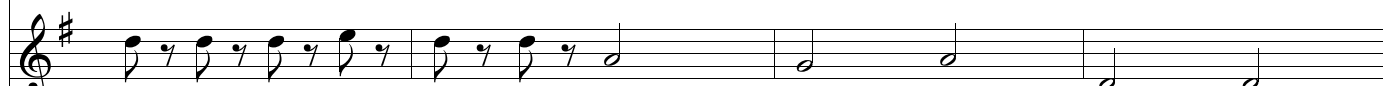
43



1: Flute



2: Oboe

3: B-flat  
Clarinet4: French  
Horn5:  
Bassoon



47

Musical staff for Flute 1, measures 47-49. The staff contains a melodic line with eighth and quarter notes, including a sharp sign on the second measure.

1: Flute

Musical staff for Oboe 2, measures 47-49. The staff shows a melodic line in the first measure followed by rests in the subsequent measures.

2: Oboe

Musical staff for B-flat Clarinet 3, measures 47-49. The staff contains a melodic line with eighth and quarter notes, including a sharp sign on the second measure.

3: B-flat  
Clarinet

Musical staff for French Horn 4, measures 47-49. The staff shows a melodic line in the first measure followed by rests in the subsequent measures.

4: French  
Horn

Musical staff for Bassoon 5, measures 47-49. The staff contains a melodic line with eighth and quarter notes, including a sharp sign on the second measure.

5:  
Bassoon

50

Musical staff for Flute 1, measures 50-52. The staff contains a melodic line with quarter notes, including a sharp sign on the second measure.

1: Flute

Musical staff for Oboe 2, measures 50-52. The staff shows a melodic line with a slur over the first two measures and a sharp sign on the second measure.

2: Oboe

Musical staff for B-flat Clarinet 3, measures 50-52. The staff shows rests in all three measures.

3: B-flat  
Clarinet

Musical staff for French Horn 4, measures 50-52. The staff shows a melodic line in the first measure followed by rests in the subsequent measures.

4: French  
Horn

Musical staff for Bassoon 5, measures 50-52. The staff contains a melodic line with quarter notes.

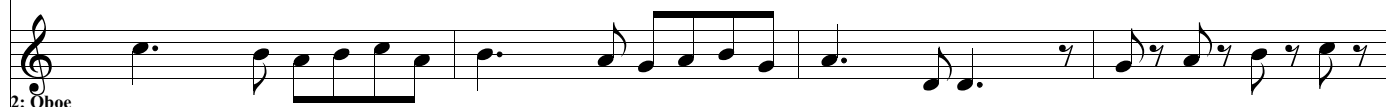
5:  
Bassoon

51



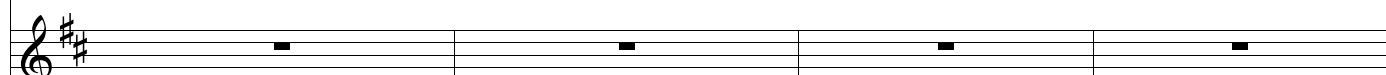
1: Flute

Musical staff for Flute 1, measures 51-54. The staff contains a melodic line with eighth and sixteenth notes, including accidentals (sharps and naturals).




2: Oboe

Musical staff for Oboe 2, measures 51-54. The staff contains a melodic line with eighth and sixteenth notes, including accidentals (sharps and naturals).



3: B-flat Clarinet

Musical staff for B-flat Clarinet 3, measures 51-54. The staff contains whole rests for all four measures.



4: French Horn

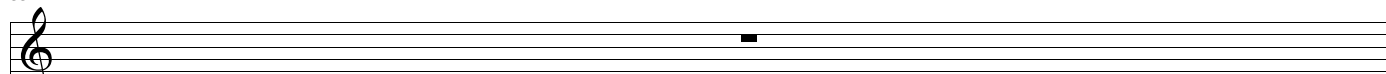
Musical staff for French Horn 4, measures 51-54. The staff contains whole notes and rests, including accidentals (sharps and naturals).



5: Bassoon

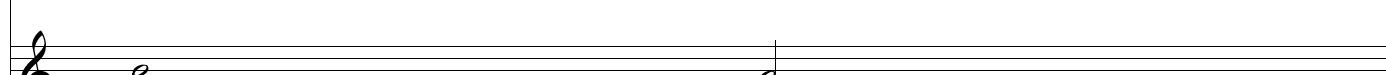
Musical staff for Bassoon 5, measures 51-54. The staff contains a melodic line with eighth and sixteenth notes, including accidentals (sharps and naturals).

55



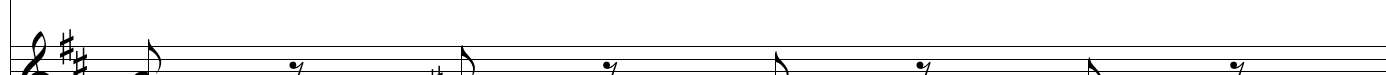
1: Flute

Musical staff for Flute 1, measures 55-58. The staff contains whole rests for all four measures.



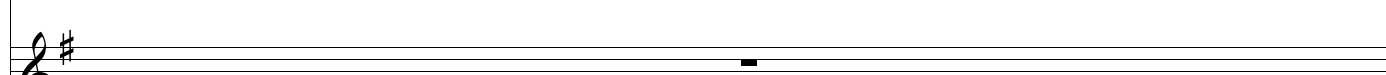
2: Oboe

Musical staff for Oboe 2, measures 55-58. The staff contains whole notes and rests.



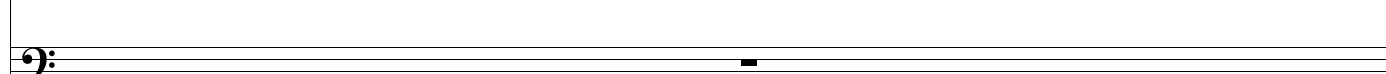
3: B-flat Clarinet

Musical staff for B-flat Clarinet 3, measures 55-58. The staff contains eighth notes and rests, including accidentals (sharps and naturals).



4: French Horn

Musical staff for French Horn 4, measures 55-58. The staff contains whole rests for all four measures.



5: Bassoon

Musical staff for Bassoon 5, measures 55-58. The staff contains whole rests for all four measures.

5:  
Bassoon

56

1: Flute

2: Oboe

3: B-flat Clarinet

4: French Horn

5: Bassoon

57

1: Flute

2: Oboe

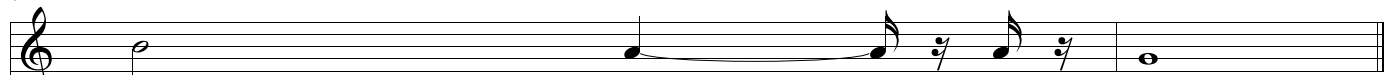
3: B-flat Clarinet

4: French Horn

5: Bassoon

5:  
Bassoon

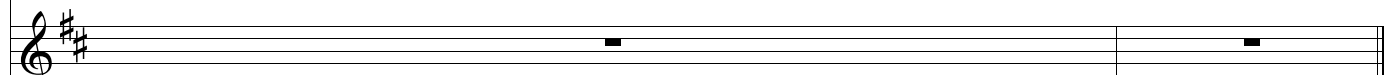
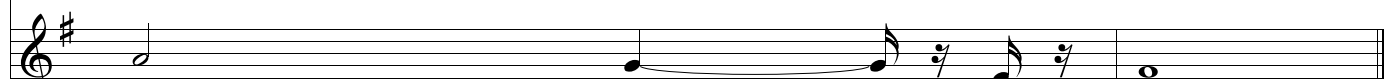
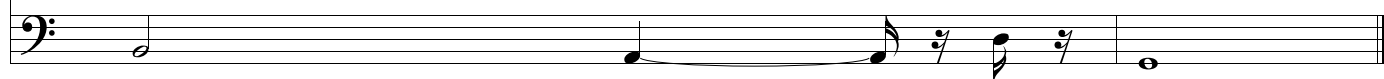
61



1: Flute



2: Oboe

3: B-flat  
Clarinet4: French  
Horn5:  
Bassoon