



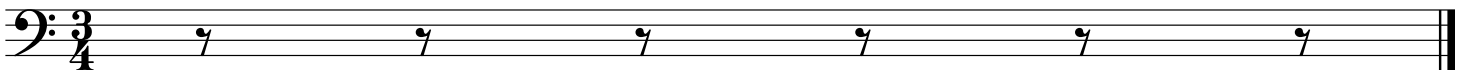
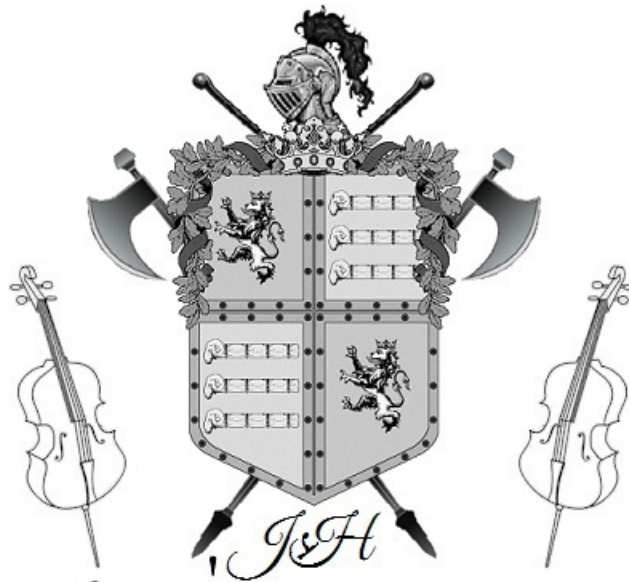
DYNAMIDEN

OP. 173

MYSTERIOUS POWERS OF MAGNETISM

WALZER

JOSEF STRAUSS



Dynamiden

Sostenuto

Introduction

Strauss

1

6

11

16

21

26

31

36

40

44

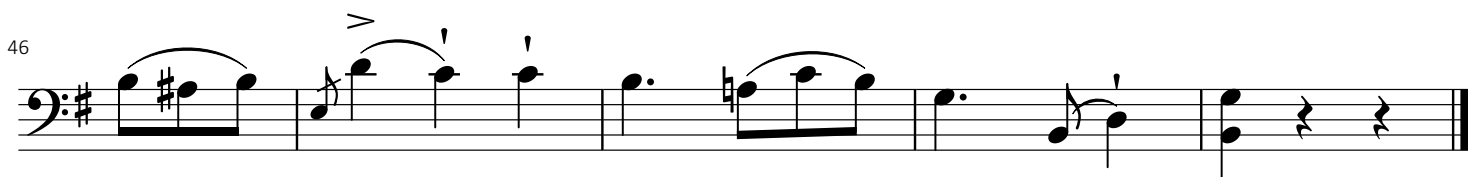
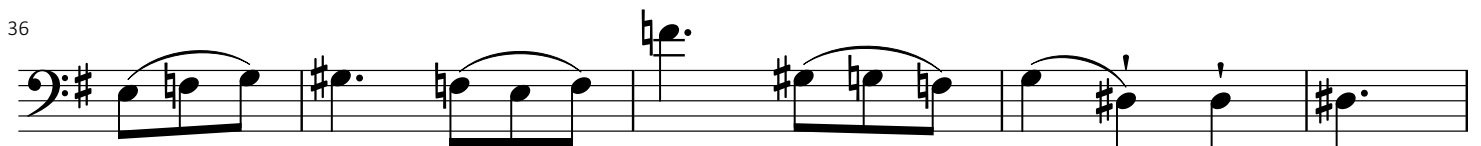
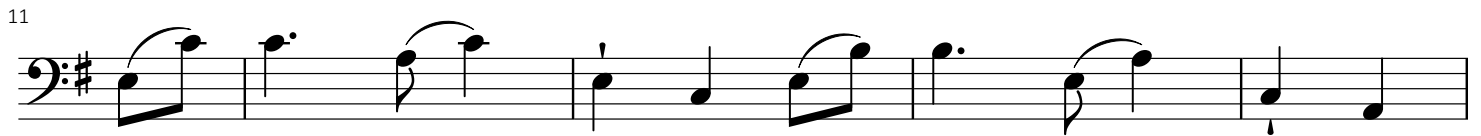
49

Dynamiden

Walzer

Walzer 1

Strauss



Dynamiden

Walzer 2

Strauss

5

9

13

17

22

27

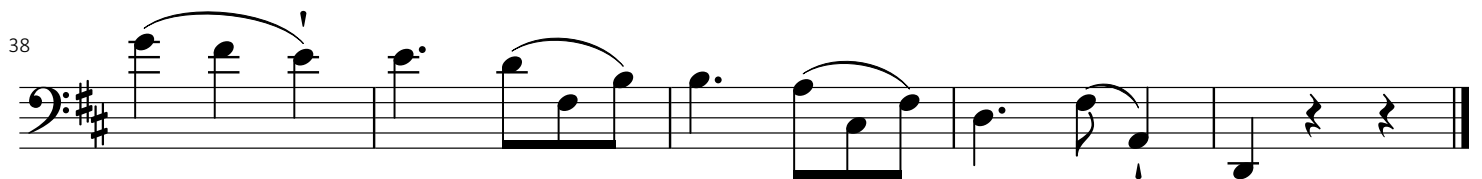
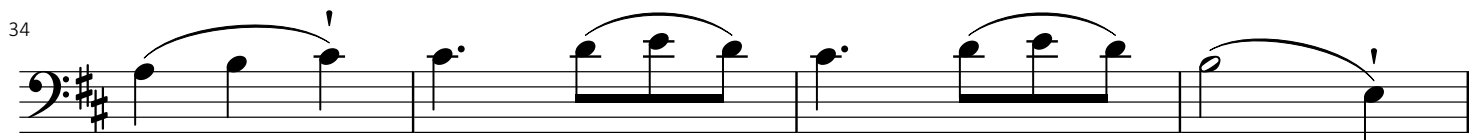
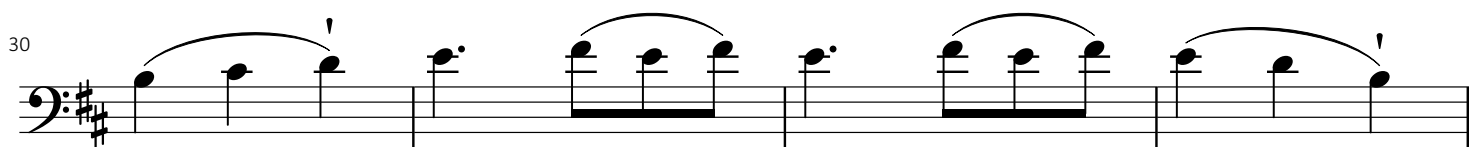
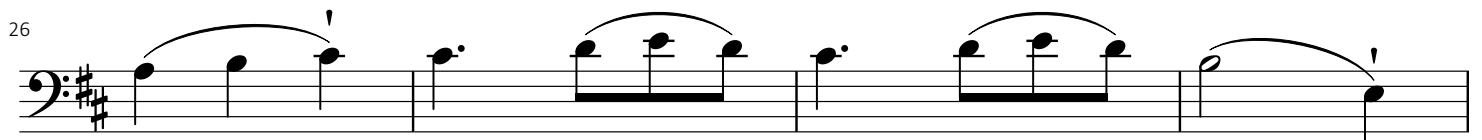
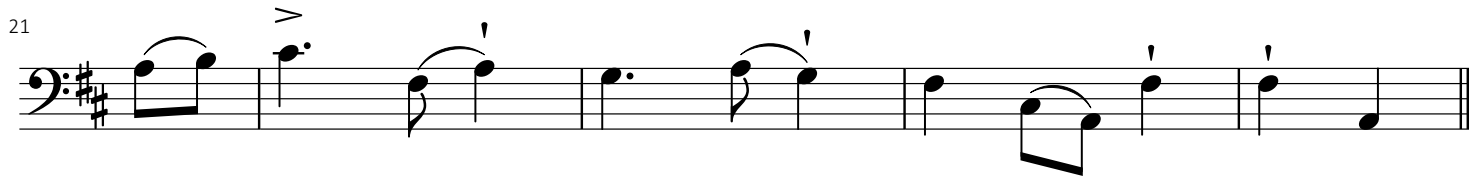
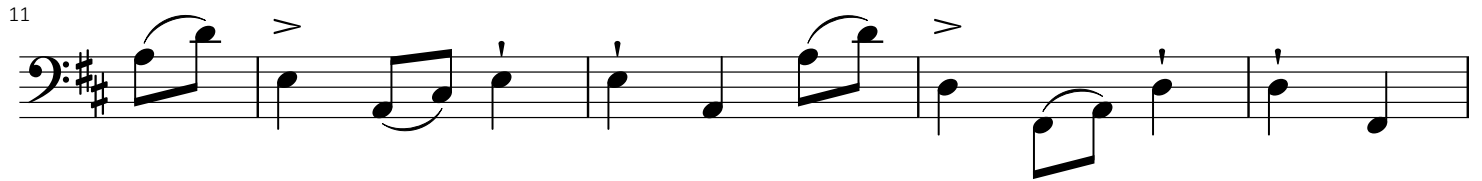
32

4

Dynamiden

Walzer 3

Strauss



Dynamiden

Walzer 4

Strauss

First musical staff, measures 1-4. Bass clef, key signature of three sharps (F#, C#, G#), 3/4 time signature. The melody begins with a quarter note G2, followed by a quarter note A2, a quarter note B2, and a quarter note C3. A slur covers the next two measures: a quarter note B2 and a quarter note A2. The piece ends with a double bar line.

5

Second musical staff, measures 5-8. The melody continues with a quarter note B2, a quarter note A2, a quarter note G2, and a quarter note F#2. A slur covers the next two measures: a quarter note E2 and a quarter note D2. The piece ends with a double bar line.

10

Third musical staff, measures 9-12. The melody continues with a quarter note C3, a quarter note B2, a quarter note A2, and a quarter note G2. A slur covers the next two measures: a quarter note F#2 and a quarter note E2. The piece ends with a double bar line.

14

Fourth musical staff, measures 13-16. The melody continues with a quarter note D2, a quarter note C3, a quarter note B2, and a quarter note A2. A slur covers the next two measures: a quarter note G2 and a quarter note F#2. The piece ends with a double bar line.

18

Fifth musical staff, measures 17-20. The melody continues with a quarter note E2, a quarter note D2, a quarter note C3, and a quarter note B2. A slur covers the next two measures: a quarter note A2 and a quarter note G2. The piece ends with a double bar line.

22

Sixth musical staff, measures 21-24. The melody continues with a quarter note F#2, a quarter note E2, a quarter note D2, and a quarter note C3. A slur covers the next two measures: a quarter note B2 and a quarter note A2. The piece ends with a double bar line.

27

Seventh musical staff, measures 25-28. The melody continues with a quarter note G2, a quarter note F#2, a quarter note E2, and a quarter note D2. A slur covers the next two measures: a quarter note C3 and a quarter note B2. The piece ends with a double bar line.

32

Eighth musical staff, measures 29-32. The melody continues with a quarter note A2, a quarter note G2, a quarter note F#2, and a quarter note E2. A slur covers the next two measures: a quarter note D2 and a quarter note C3. The piece ends with a double bar line.

37

Ninth musical staff, measures 33-36. The melody continues with a quarter note B2, a quarter note A2, a quarter note G2, and a quarter note F#2. A slur covers the next two measures: a quarter note E2 and a quarter note D2. The piece ends with a double bar line.

Dynamiden

Walzer 5

Strauss

1

6

11

16

21

26

31

36

Dynamiden

Coda

Strauss

First staff of music, measures 1-5. Bass clef, key signature of two sharps (F# and C#), 3/4 time signature. The melody consists of eighth and quarter notes with accents and slurs.

Second staff of music, measures 6-10. Continuation of the melody from the first staff.

Third staff of music, measures 11-15. Continuation of the melody.

Fourth staff of music, measures 16-20. Continuation of the melody, ending with a double bar line and a sharp sign.

Fifth staff of music, measures 21-25. Continuation of the melody.

Sixth staff of music, measures 26-30. Continuation of the melody.

Seventh staff of music, measures 31-35. Continuation of the melody.

Eighth staff of music, measures 36-40. Continuation of the melody, ending with a double bar line and a fermata.

Ninth staff of music, measures 41-45. Continuation of the melody, ending with a double bar line and a fermata.

Dynamiden

Coda Continued

45

49

53

58

63

67

71

75

80