

Seiner königlichen Hohheit

PRINZ ALBERT

VON SACHSEN.

VERMÄHLUNGS-TOAST.

WALZER

für das

SOLO CELLO

von

JOHANN STRAUSS.

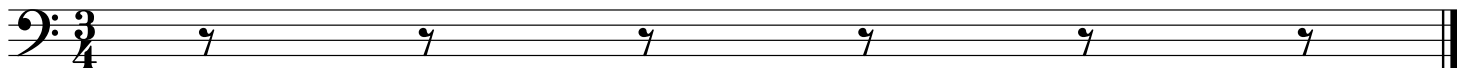
Kapellmeister.

136<sup>tes</sup> Werk.

Eigenthum der Verleger.

Eingetragen in das Archiv der Musikalien-Verleger.

WIEN, bei Carl Haslinger q<sup>o</sup> Tobias.

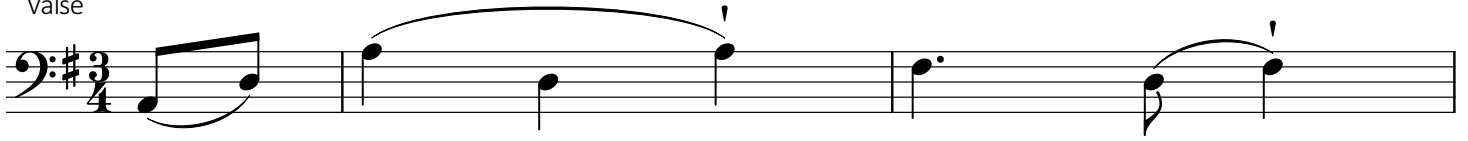


# Vermalungs-Toaste

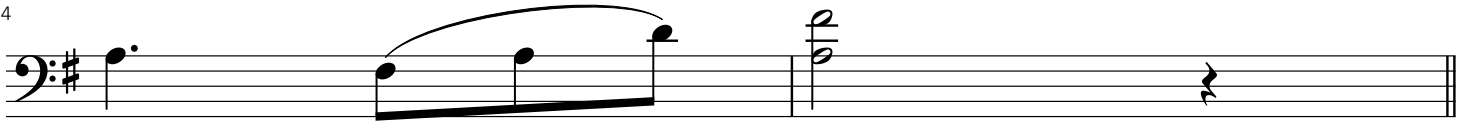
## Introduction

Strauss

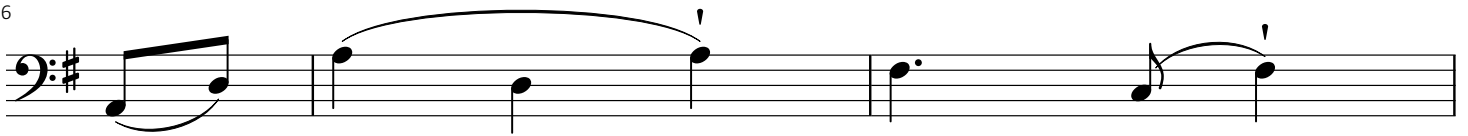
Valse



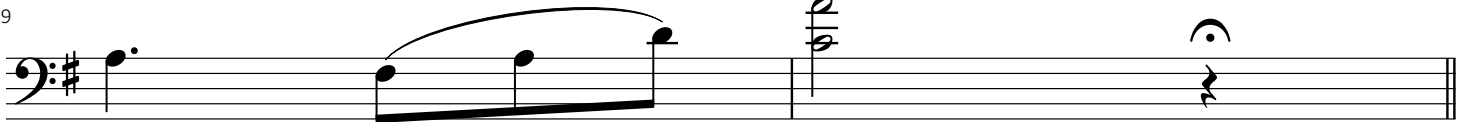
4



6



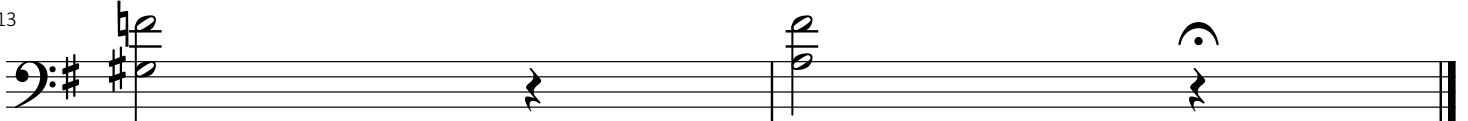
9



11



13



# Vermalungs-Toaste

Walzer 1

Strauss

1.

6.

11.

15.

20.

24.

28.

32.

36.

# Vermalungs-Toaste

Walzer 2

Strauss

6

11

16

21

26

30

34

4

# Vermalungs-Toaste

Walzer 3

Strauss

1

6

11

16

21

25

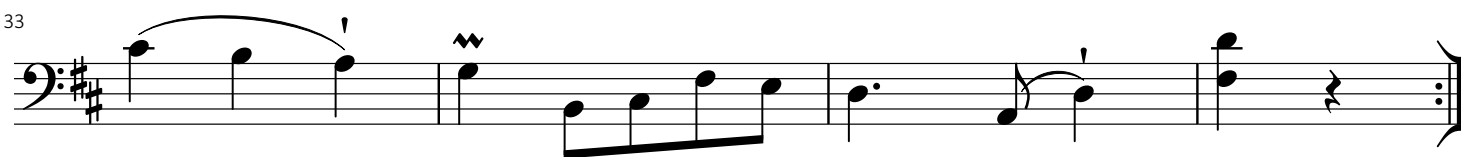
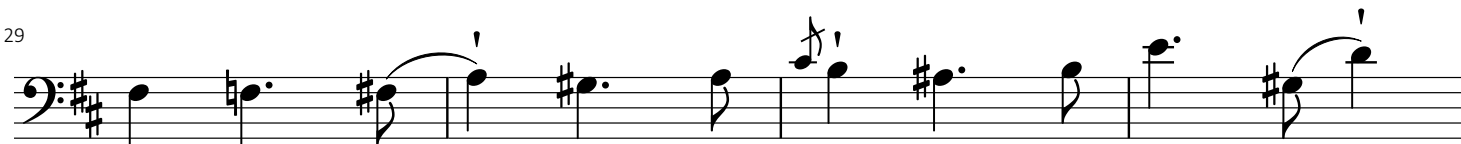
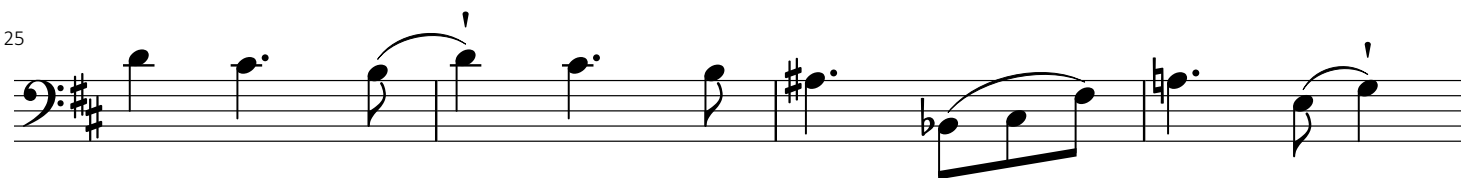
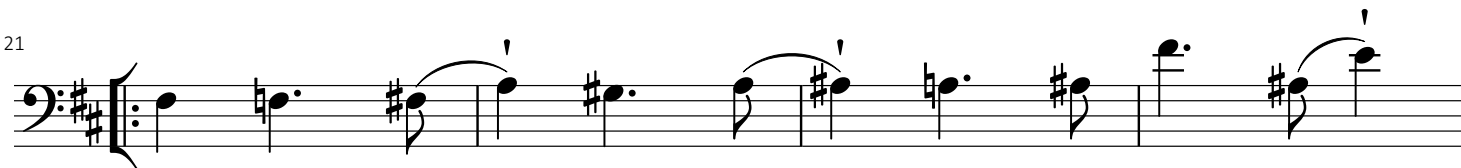
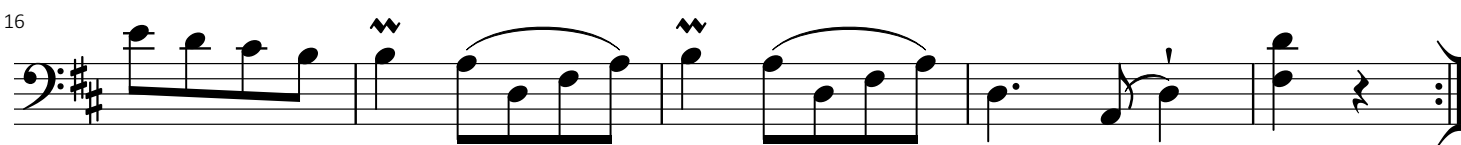
29

33

# Vermalungs-Toaste

Walzer 4

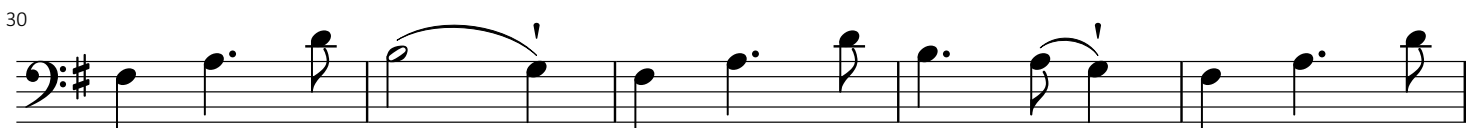
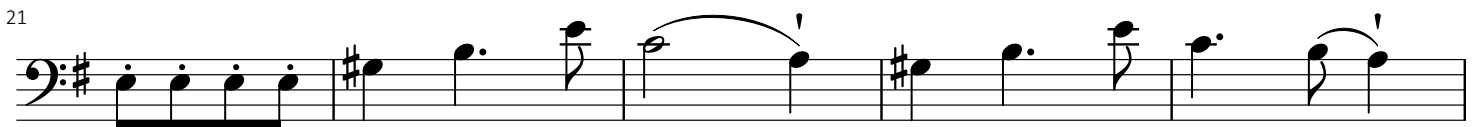
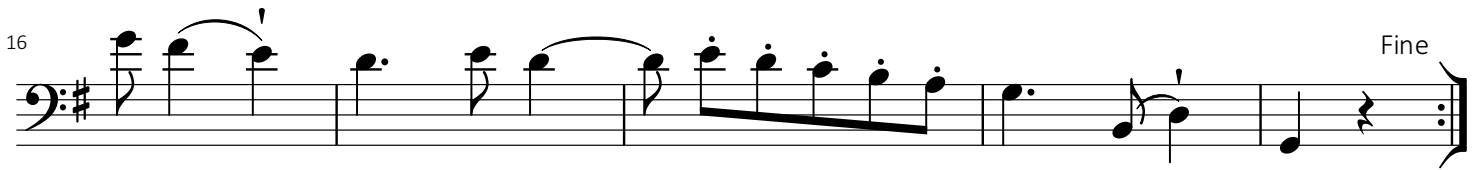
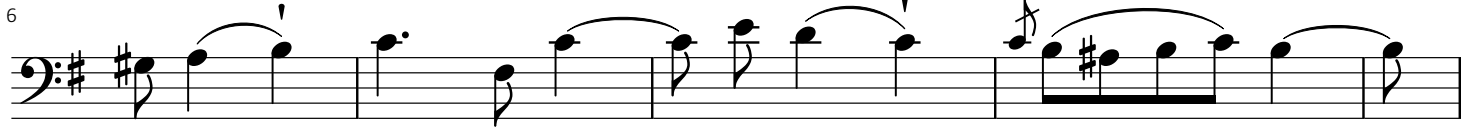
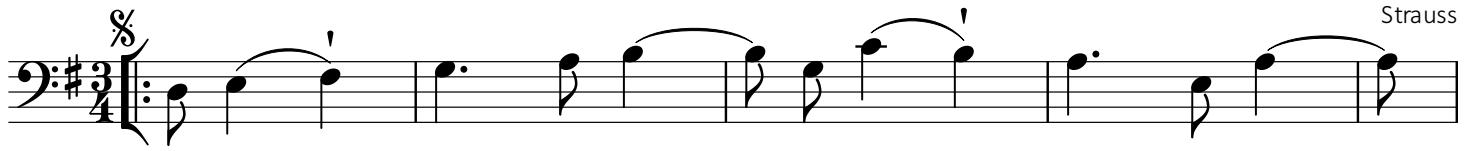
Strauss



# Vermalungs-Toaste

Walzer 5

Strauss



# Vermalungs-Toaste

Strauss

Coda

6

11

17

22

27

31

36

41

46

51

56



# Vermalungs-Toaste

Coda Continued

Strauss

61

66

71

76

80

84

88

92

96

100

104

108