



PANACEA-KLANCE

WALZER

Transposed & Arranged
For Solo Cello



Johann Strauss

WIEN
bei Carl Haslinger q^m Tobias,

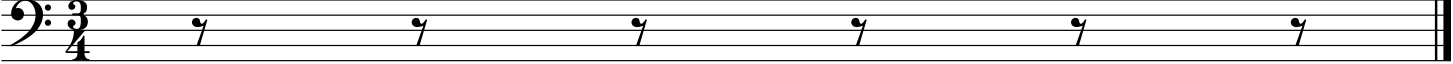


J&H



MS, US

04/17/2017



Panecea

Walzer

Walzer 1

Strauss

5

9

13

17

21

25

29

34

39

43

48

Fine

D.S.

Panacea

Walzer 3

Strauss

6

11

16

21

25

29

33

Panecea

Walzer 4

Strauss

Eingang

Measures 1-5 of the introduction. The music is in bass clef, 3/4 time, and D major. It begins with a half note D2, followed by quarter notes E2, F#2, and G2. The melody continues with quarter notes A2, B2, and C3, then D3, E3, and F#3. The piece concludes with a quarter rest followed by a quarter note G3.

6 Walzer

Measure 6, the first measure of the waltz. It starts with a repeat sign and a half note D2, followed by quarter notes E2, F#2, and G2. The melody continues with quarter notes A2, B2, and C3, then D3, E3, and F#3.

11

Measures 7-10. The melody continues with quarter notes D3, E3, and F#3, then G3, A3, and B3. It concludes with a quarter note C4 and a quarter rest.

16

Measures 11-15. The melody continues with quarter notes D3, E3, and F#3, then G3, A3, and B3. It concludes with a quarter note C4 and a quarter rest.

21

Measures 16-20. The melody continues with quarter notes D3, E3, and F#3, then G3, A3, and B3. It concludes with a quarter note C4 and a quarter rest.

26

Measures 21-25. The melody continues with quarter notes D3, E3, and F#3, then G3, A3, and B3. It concludes with a quarter note C4 and a quarter rest.

31

Measures 26-30. The melody continues with quarter notes D3, E3, and F#3, then G3, A3, and B3. It concludes with a quarter note C4 and a quarter rest.

36

Measures 31-35. The melody continues with quarter notes D3, E3, and F#3, then G3, A3, and B3. It concludes with a quarter note C4 and a quarter rest.

41

Measures 36-40. The melody continues with quarter notes D3, E3, and F#3, then G3, A3, and B3. It concludes with a quarter note C4 and a quarter rest.

46

Measures 41-45. The melody continues with quarter notes D3, E3, and F#3, then G3, A3, and B3. It concludes with a quarter note C4 and a quarter rest.

51

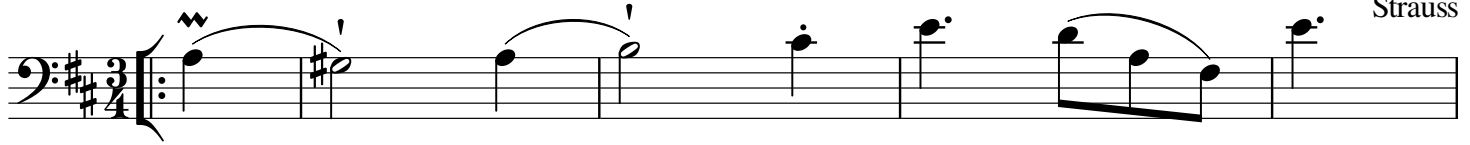
Measures 46-50. The melody continues with quarter notes D3, E3, and F#3, then G3, A3, and B3. It concludes with a quarter note C4 and a quarter rest.

Panecea

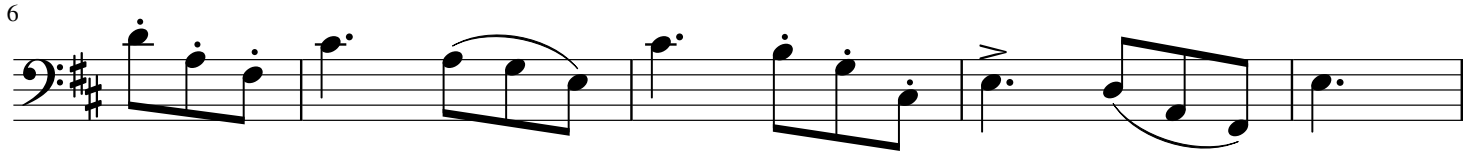
Walzer 5

Strauss

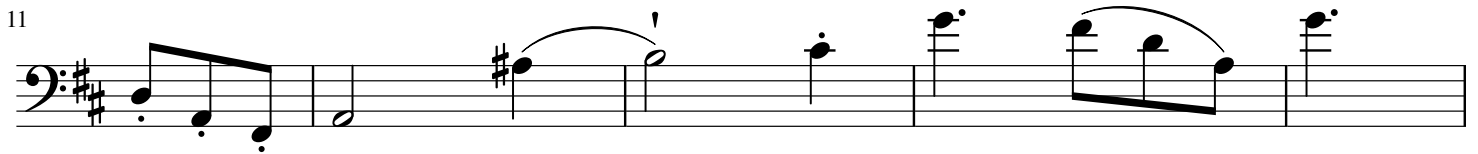
1



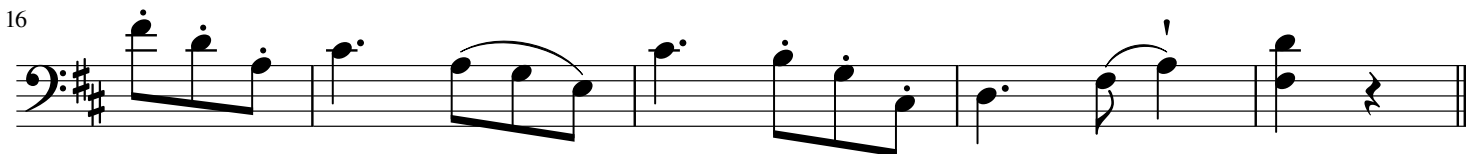
6



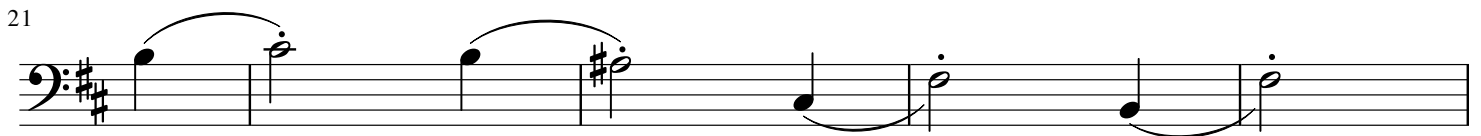
11



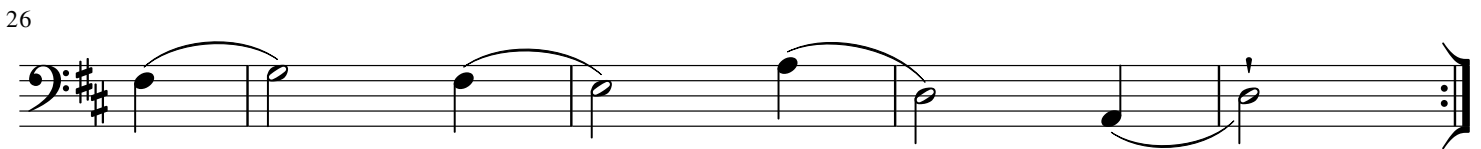
16



21



26



31



36



Panecea Coda

Štrauss

6

12

17

22

28

34

39

44

49

54

60

8

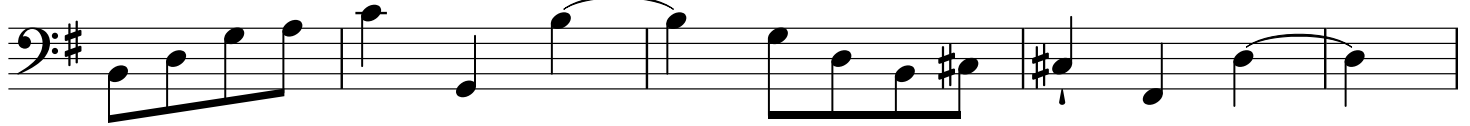
Panecea Coda Continued

Strauss

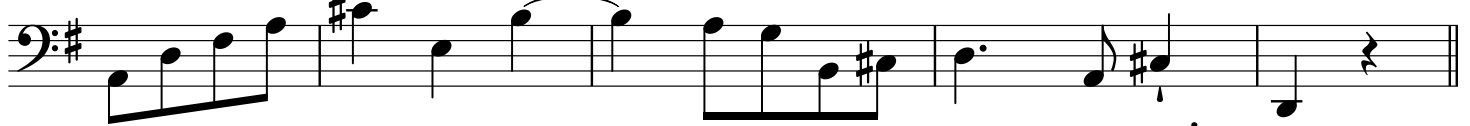
66



71



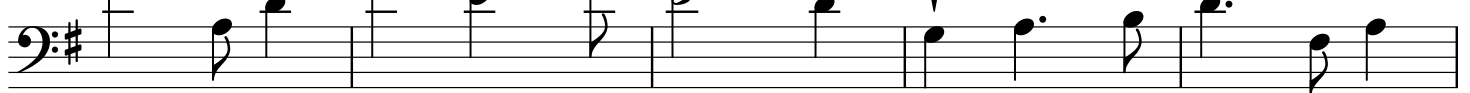
76



81



86



91



96



101



105



109



113



119

