

# Braut-Sprüche

WALZER

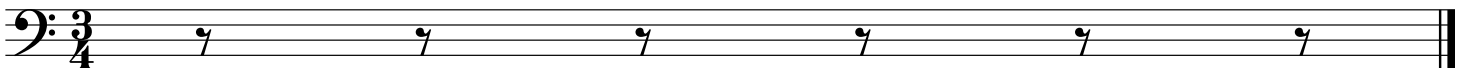
FÜR  
PIANOFORTE

von  
**JOHANN STRAUSS.**

90<sup>tes</sup> Werk.



If the only prayer  
you said in your  
whole life was,  
"Thank You" that  
would suffice.



# Orakel-Spruche

## Introduction

Strauss

Moderato

4

7

9

11

13

# Orakel-Sprüche

Walzer

Walzer 1

Strauss

1

6

11

16

21

26

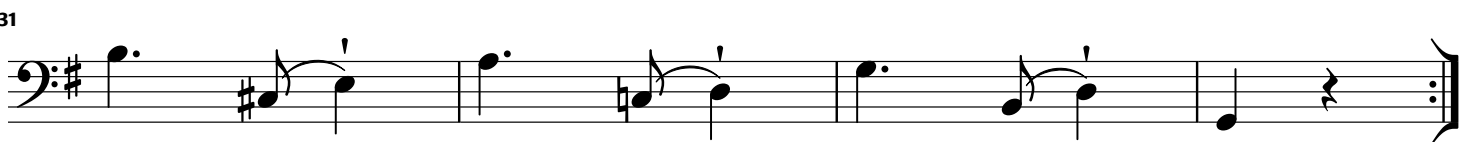
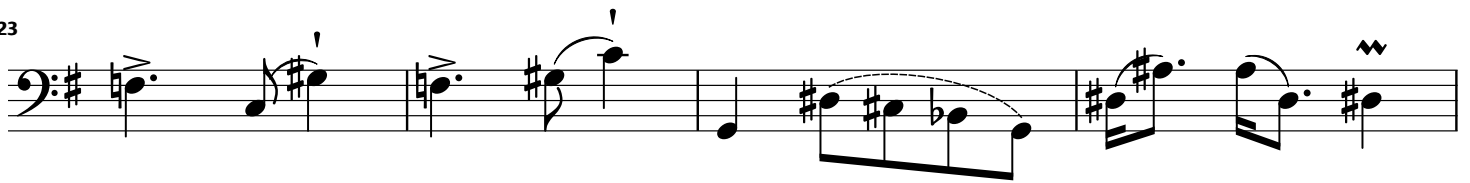
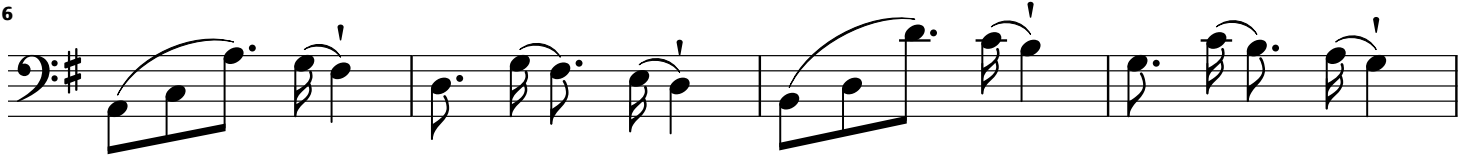
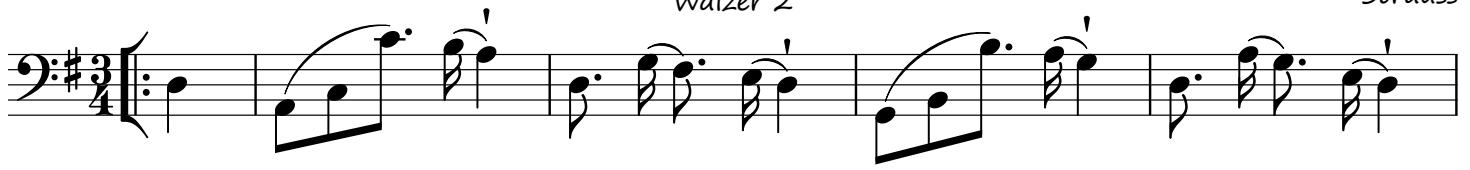
31

36

# Orakel-Sprüche

Walzer 2

Strauss



# Orakel-Spruche

Walzer 3

Strauss

1

6

10

14

18

22

26

30

34

# Orakel-Sprüche

Walzer 4

Strauss

Measures 1-5: Bass clef, key signature of two sharps (D major), 3/4 time signature. Measure 1 starts with a repeat sign. The melody consists of quarter notes with accents and slurs. A sharp sign is placed above the second measure.

Measures 6-10: Continuation of the melody with eighth notes and slurs. Trills are indicated above measures 7 and 10.

Measures 11-15: Continuation of the melody with quarter notes and slurs. Measure 11 starts with a repeat sign.

Measures 16-20: Continuation of the melody with eighth notes and slurs. Trills are indicated above measures 17 and 19. The piece ends with a double bar line and repeat sign.

Measures 21-25: Continuation of the melody with eighth notes and slurs. Trills are indicated above measures 22, 24, and 25. A flat sign is placed below the final note.

Measures 26-29: Continuation of the melody with eighth notes and slurs. Trills are indicated above measures 28 and 29.

Measures 30-33: Continuation of the melody with eighth notes and slurs. Trills are indicated above measures 31 and 33.

Measures 34-38: Continuation of the melody with eighth notes and slurs. Trills are indicated above measures 35 and 37. The piece ends with a double bar line and repeat sign.

# Orakel-Spruche

Walzer 5

Strauss

1

5

9

13

17

22

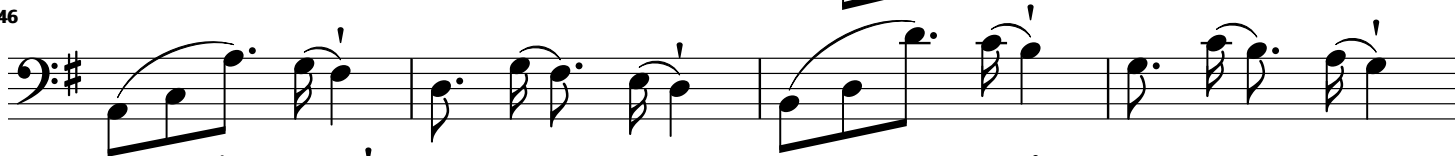
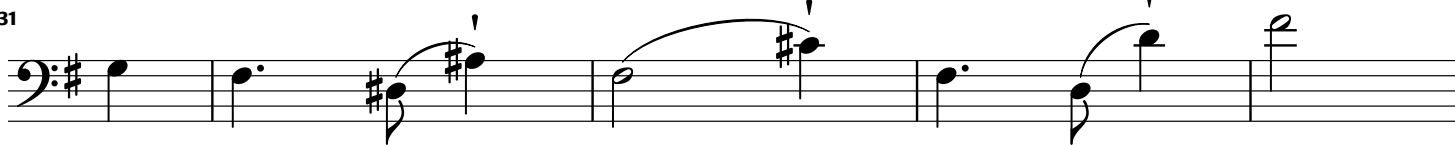
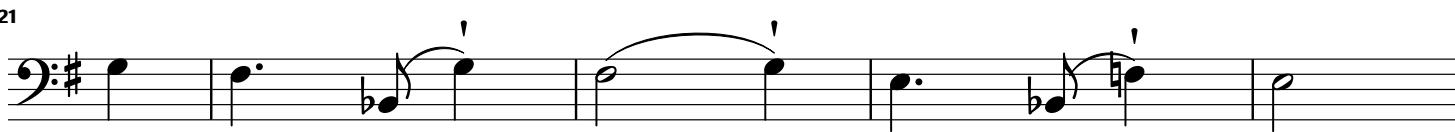
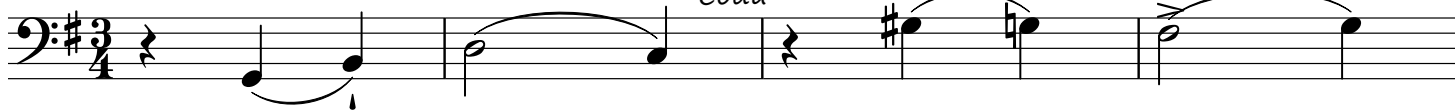
26

30

# Orakel-Spruche

Strauss

*Coda*





# Orakel-Sprüche Coda Continued

Strauss

54

58

63

68

73

78

83

87

92

97

102

106