

# NACHTFALTER

## WALZER

For  
Solo Cello

von  
**JOHANN STRAUSS,**



*Wien.*

*157<sup>tes</sup> Werk.*

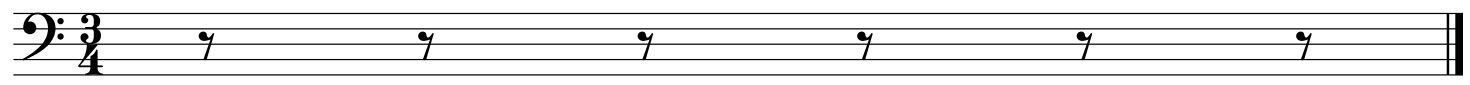


**J&H**



MS, US

02/19/2017



# Nachtfalter

## Introduction

Strauss

Presto

The first staff of music is in bass clef, 3/4 time, and F# major. It contains measures 1 through 5. The melody consists of eighth and quarter notes with various accidentals (sharps and naturals). Phrasing slurs are placed over measures 1-2, 3-4, and 5. Measure 5 ends with a fermata over a dotted half note.

6

The second staff of music is in bass clef and contains measures 6 through 11. The melody continues with eighth and quarter notes. Phrasing slurs are placed over measures 6-11. Measure 11 ends with a fermata over a dotted half note.

12

The third staff of music is in bass clef and contains measures 12 through 17. The melody is a continuous line of eighth notes. Measure 17 ends with a fermata over a dotted half note.

Walzer

18

The fourth staff of music is in bass clef and contains measures 18 through 22. The melody features eighth and quarter notes with phrasing slurs over measures 18-19, 20-21, and 22. Measure 22 ends with a fermata over a dotted half note.

23

The fifth staff of music is in bass clef and contains measures 23 through 27. The melody continues with eighth and quarter notes and phrasing slurs over measures 23-24, 25-26, and 27. Measure 27 ends with a fermata over a dotted half note.

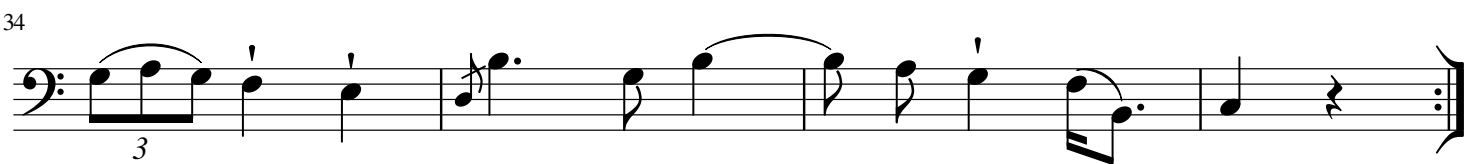
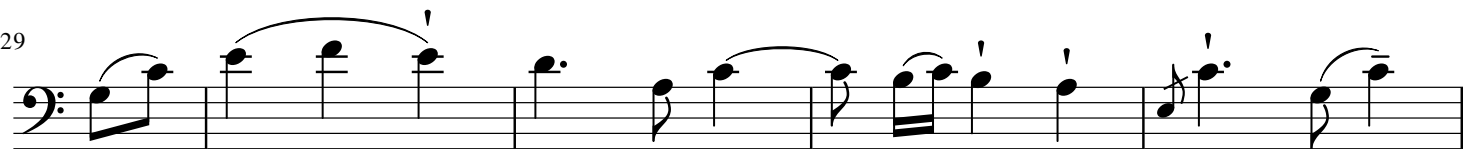
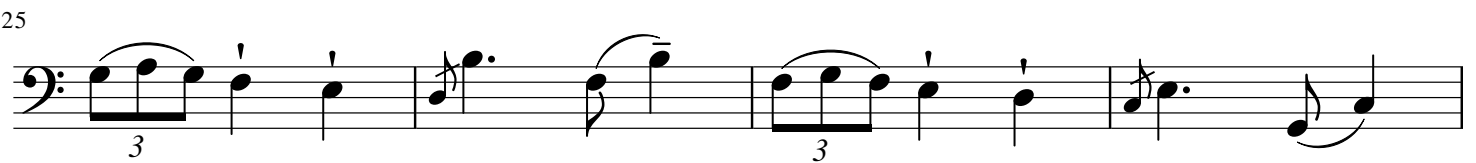
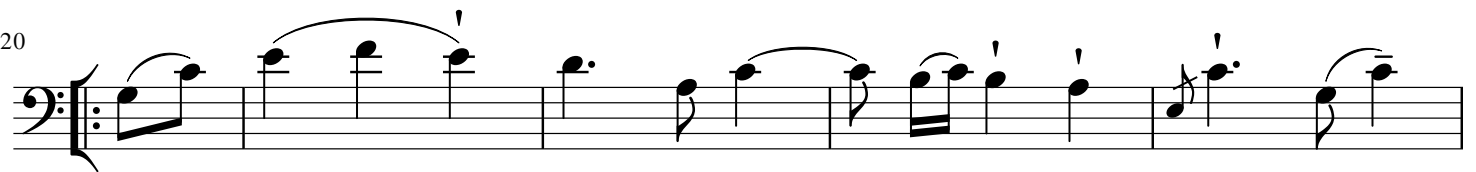
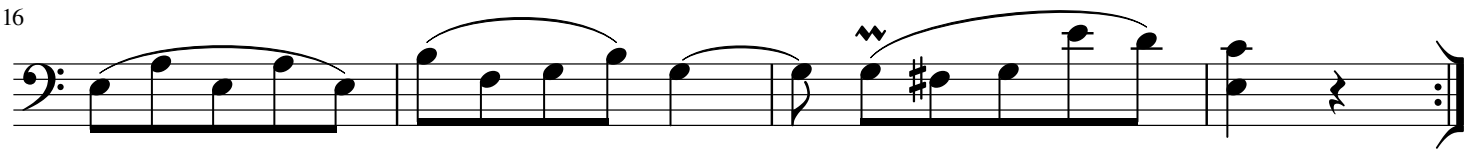
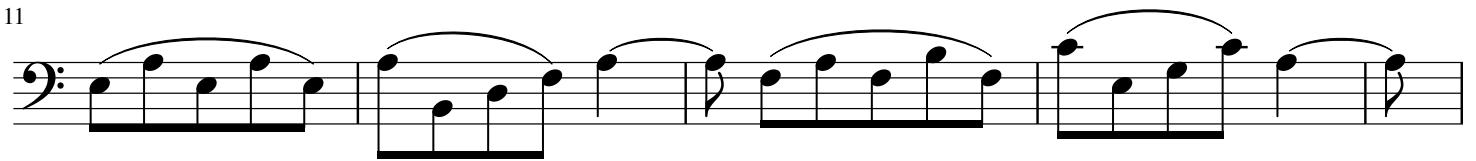
28

The sixth staff of music is in bass clef and contains measures 28 through 32. The melody consists of eighth and quarter notes. Measure 32 ends with a fermata over a dotted half note.

# Nachtfalter

## Walzer 1

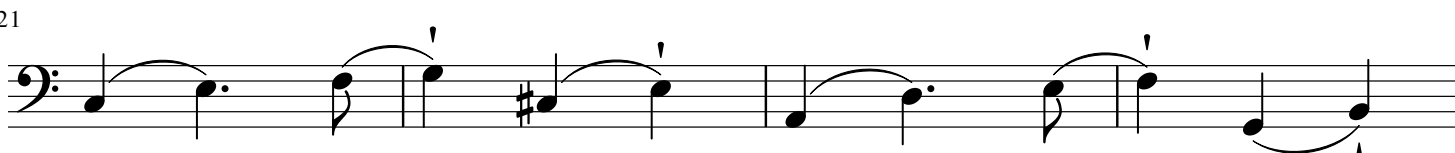
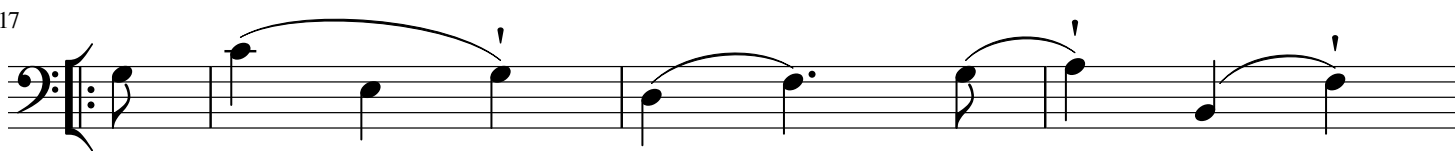
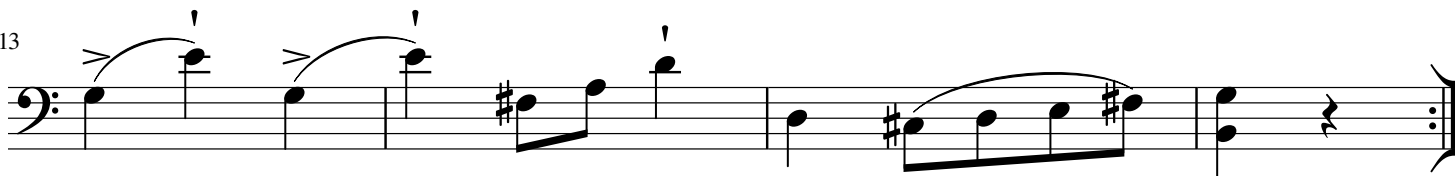
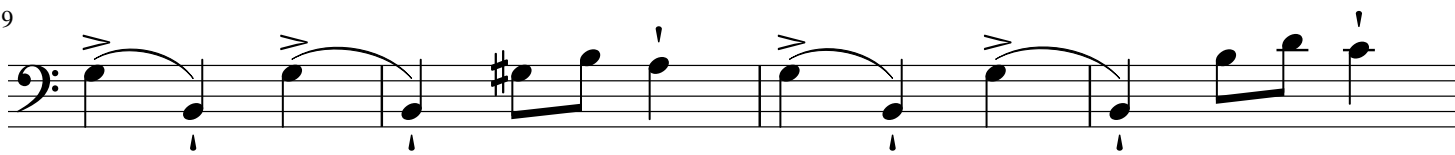
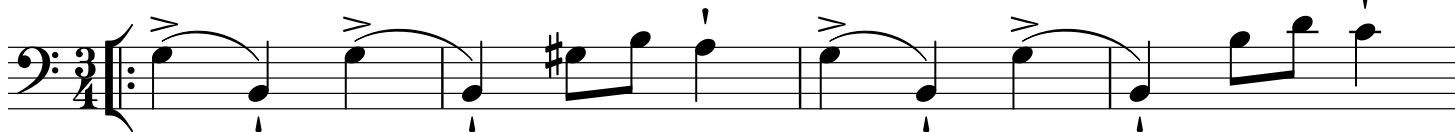
Strauss



# Nachtfalter

## Walzer 2

Strauss



# Nachtfalter

Walzer 3

Strauss

6

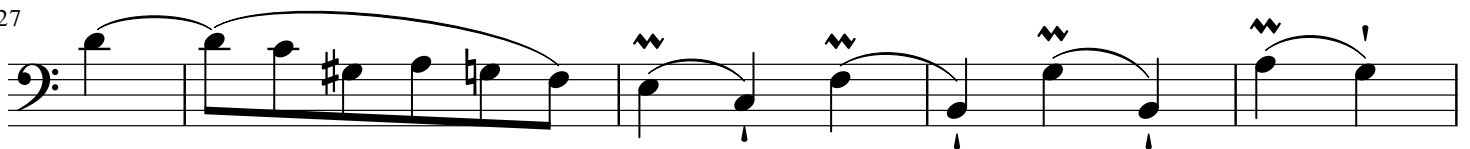
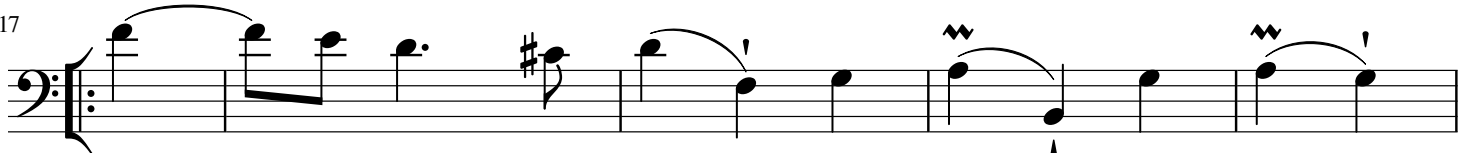
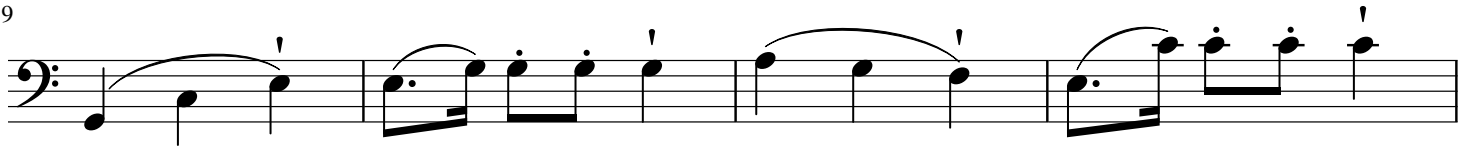
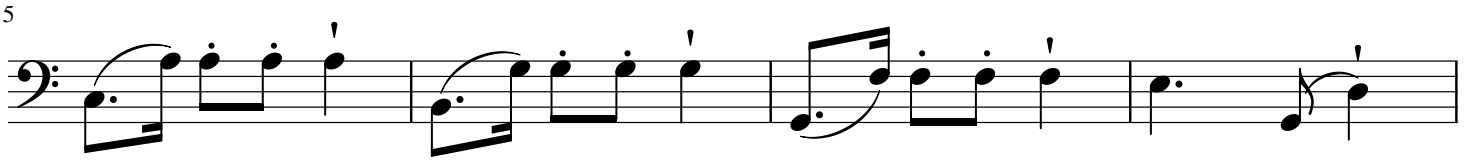
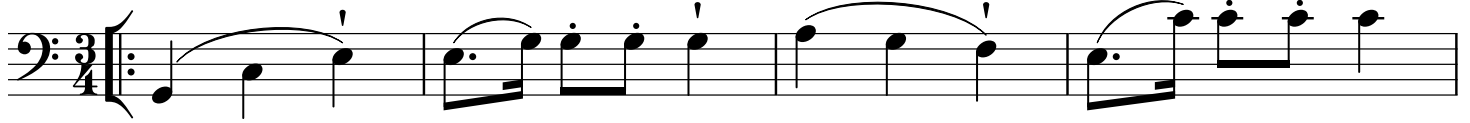
21

33

# Nachtfalter

Walzer 4

Strauss



# Nachtfalter

## Walzer 5

Strauss

6

11

16

21

26

31

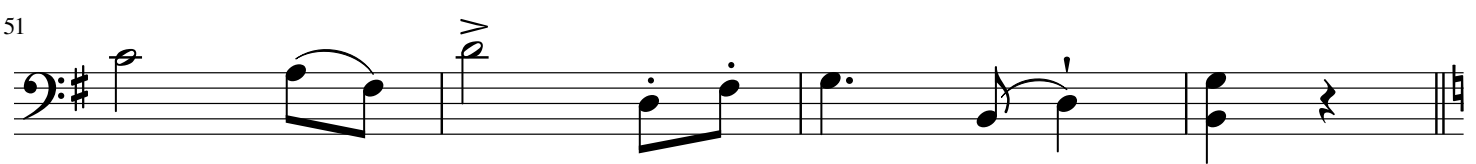
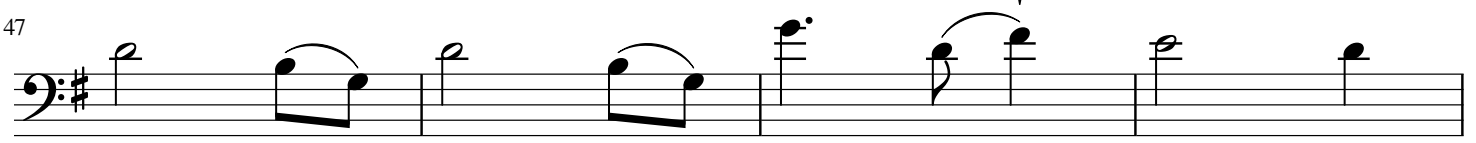
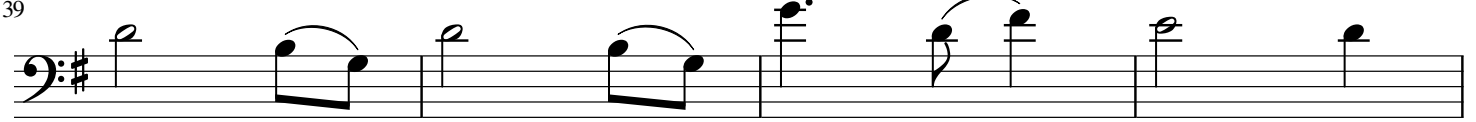
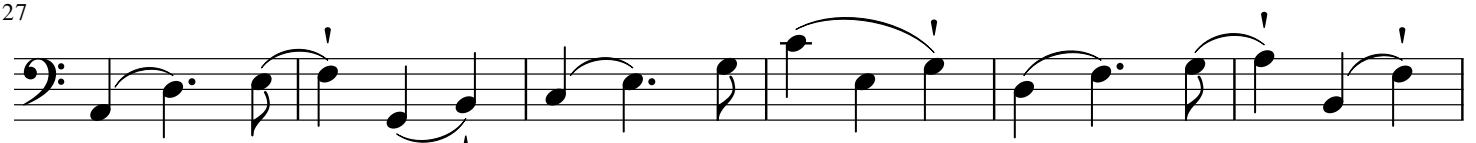
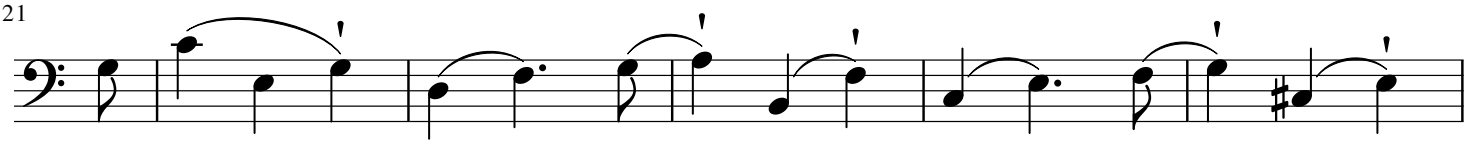
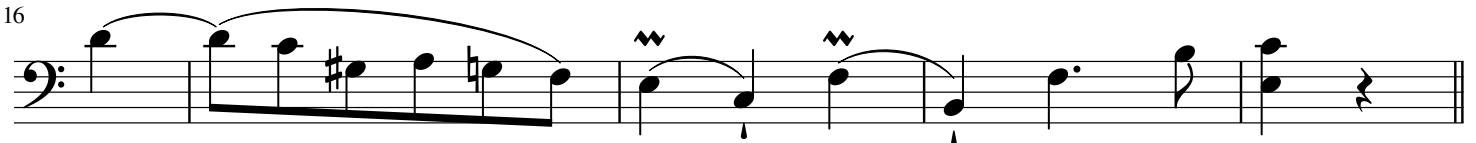
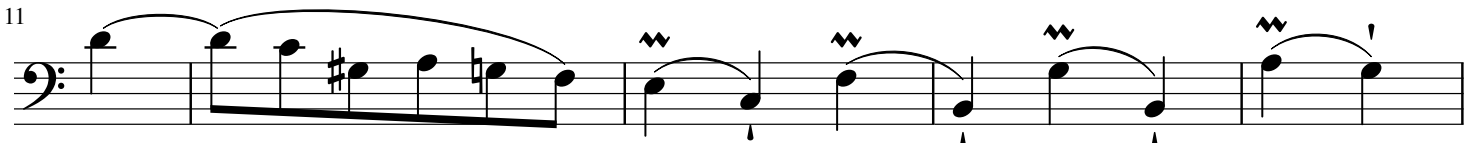
36

D.S.

# Nachtfalter

Coda

Strauss





# Nachtfalter

Coda Continued

Strauss

55

60

65

70

74

79

83

88

92

96

100

Detailed description of the musical score: The score is written in bass clef with a 3/4 time signature. It consists of ten staves of music. Measures 55-60 show a sequence of eighth-note chords with slurs. Measures 60-65 continue with similar eighth-note patterns. Measures 65-70 feature a change in the bass line with a sharp sign. Measures 70-74 include a trill and a fermata. Measures 74-79 contain triplets and slurs. Measures 79-83 show a continuation of the eighth-note patterns. Measures 83-88 feature a triplet and a fermata. Measures 88-92 consist of eighth-note chords. Measures 92-96 show a sequence of eighth-note chords with a sharp sign. Measures 96-100 conclude with eighth-note chords and a final fermata.