

Lebenswecker

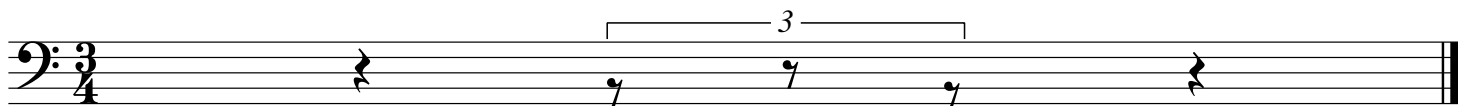
WOLFFNER
für das
Solo Cello

Herrn Hören der Medizin
an der Wiener Hochschule
achtungsvoll
gewidmet

von
JOHANN STRAUSS.

232. Werk.

Eigenthum der Verleger. Eingetragen in das Archiv der Musikalien-Verleger.



Lebenswecker

Introduction

Strauss

Allegro

First staff of music (measures 1-4) in bass clef, key of D major (one sharp), and 2/4 time. Measure 1 contains a triplet of eighth notes (D, E, F) followed by a quarter note G. Measure 2 contains a triplet of eighth notes (A, B, C) followed by a quarter note D. Measures 3 and 4 each contain sixteenth-note triplets: (D, E, F), (G, A, B), (C, D, E), (F, G, A), and (B, C, D).

Second staff of music (measures 5-8) in bass clef, key of D major. Measure 5 contains a triplet of eighth notes (D, E, F) followed by a quarter note G. Measure 6 contains a triplet of eighth notes (A, B, C) followed by a quarter note D. Measures 7 and 8 each contain sixteenth-note triplets: (D, E, F), (G, A, B), (C, D, E), (F, G, A), and (B, C, D).

Third staff of music (measures 9-12) in bass clef, key of D major. Measure 9 contains a triplet of eighth notes (D, E, F) followed by a quarter note G. Measure 10 contains a quarter note A, a quarter note B with a sharp sign, and a quarter note C. Measure 11 contains a triplet of eighth notes (D, E, F) followed by a quarter note G. Measure 12 contains a quarter note A, a quarter note B, and a quarter note C.

Fourth staff of music (measures 13-15) in bass clef, key of D major. Measure 13 contains a quarter note D with a flat sign, a quarter note E, and a quarter note F with a flat sign. Measure 14 contains a quarter note G with a flat sign, a quarter note A with a flat sign, and a quarter note B. Measure 15 contains a quarter note C, a quarter note D, and a quarter note E. The staff ends with a double bar line and a 3/4 time signature.

Waltz

First staff of music for the Waltz (measures 16-19) in bass clef, key of D major, and 3/4 time. Measure 16 contains a quarter note D, a quarter note E, and a quarter note F. Measure 17 contains a quarter note G, a quarter note A, and a quarter note B. Measure 18 contains a quarter note C, a quarter note D, and a quarter note E. Measure 19 contains a quarter note F, a quarter note G, and a quarter note A. The staff ends with a double bar line.

Lebenswecker

Walzer 1

Strauss

5/4

1

5

9

14

Fine

19

24

29

34

D.S.

Lebenswecker

Walzer 3

Strauss

6

Measures 1-5 of the piece. The key signature is one sharp (F#) and the time signature is 3/4. The notation includes a repeat sign at the beginning and various note values with slurs.

6

Measures 6-10. Continuation of the melodic line with slurs and ties.

11

Measures 11-14. Continuation of the melodic line.

15

Measures 15-18. Includes a trill (tr) marking over a note in measure 17.

19

Measures 19-22. Continuation of the melodic line.

23

Measures 23-25. Ends with a double bar line and repeat sign. The word "Fine" is written to the right.

26

Measures 26-29. Includes a dynamic marking 'V' (Vibrato) over a note in measure 26.

30

Measures 30-33. Continuation of the melodic line.

34

Measures 34-37. Continuation of the melodic line.

38

Measures 38-41. Ends with a double bar line and repeat sign. The marking "D.S." (Da Capo) is written to the right.

Lebenswecker

Walzer 4

Strauss

Eingang

Measures 1-4 of the 'Eingang' section. The music is in bass clef, 3/4 time, and D major. It begins with a quarter note G2, followed by an eighth note F2 and a quarter note E2. Measure 2 contains a half note D2 with a trill (tr) above it. Measure 3 features a half note G2 with a slur over it, followed by a quarter note F2. Measure 4 consists of a half note E2 with a slur over it, followed by a quarter note D2.

Waltz

Measures 5-8 of the 'Waltz' section. Measure 5 starts with a repeat sign and a quarter note G2. Measure 6 has a quarter note F2 with a mordent above it, followed by a quarter note E2. Measure 7 contains a half note D2 with a slur over it, followed by a quarter note C2. Measure 8 has a half note B1 with a mordent above it, followed by a quarter note A1.

Measures 9-13 of the 'Waltz' section. Measure 9 has a quarter note G2 with a mordent above it, followed by a quarter note F2. Measure 10 contains a half note E2 with a slur over it, followed by a quarter note D2. Measure 11 has a half note C2 with a slur over it, followed by a quarter note B1. Measure 12 has a half note A1 with a slur over it, followed by a quarter note G2. Measure 13 has a half note F2 with a slur over it, followed by a quarter note E2.

Measures 14-18 of the 'Waltz' section. Measure 14 has a quarter note G2 with a mordent above it, followed by a quarter note F2. Measure 15 has a quarter note E2 with a mordent above it, followed by a quarter note D2. Measure 16 has a half note C2 with a slur over it, followed by a quarter note B1. Measure 17 has a half note A1 with a slur over it, followed by a quarter note G2. Measure 18 has a half note F2 with a slur over it, followed by a quarter note E2.

Measures 19-21 of the 'Waltz' section. Measure 19 has a quarter note G2 with a mordent above it, followed by a quarter note F2. Measure 20 has a half note E2 with a slur over it, followed by a quarter note D2. Measure 21 has a half note C2 with a slur over it, followed by a quarter note B1, ending with a double bar line and repeat dots.

Measures 22-25 of the 'Waltz' section. Measure 22 has a quarter rest, followed by a quarter note G2. Measure 23 has a quarter note F2, followed by a quarter note E2. Measure 24 has a quarter note D2 with a slur over it, followed by a quarter note C2. Measure 25 has a quarter note B1 with a slur over it, followed by a quarter note A1.

Measures 26-29 of the 'Waltz' section. Measure 26 has a quarter note G2 with a slur over it, followed by a quarter note F2. Measure 27 has a quarter note E2 with a slur over it, followed by a quarter note D2. Measure 28 has a quarter note C2 with a slur over it, followed by a quarter note B1. Measure 29 has a quarter note A1 with a slur over it, followed by a quarter note G2.

Measures 30-33 of the 'Waltz' section. Measure 30 has a quarter note G2 with a slur over it, followed by a quarter note F2. Measure 31 has a quarter note E2 with a slur over it, followed by a quarter note D2. Measure 32 has a quarter note C2 with a slur over it, followed by a quarter note B1. Measure 33 has a quarter note A1 with a slur over it, followed by a quarter note G2.

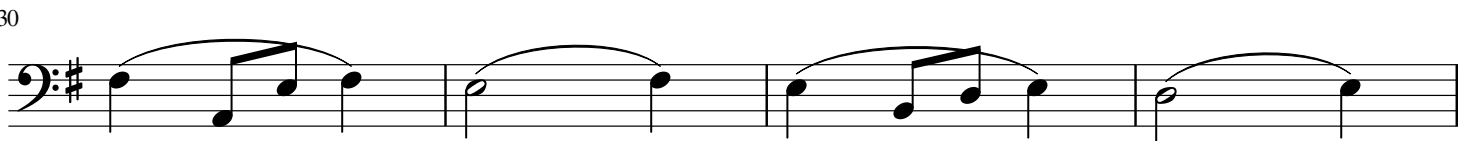
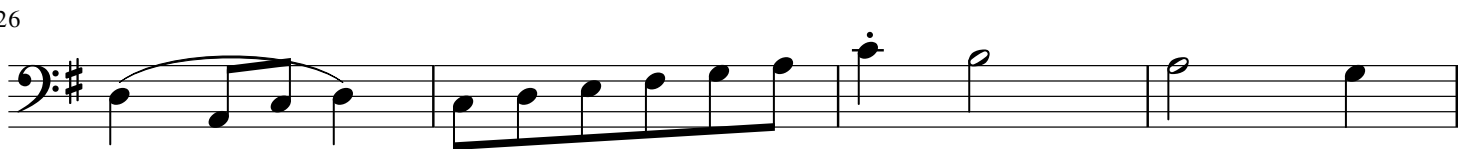
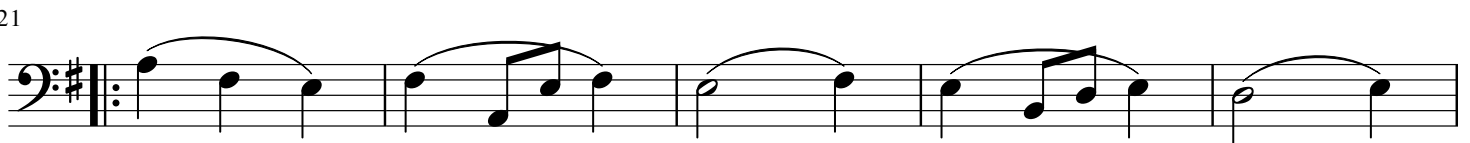
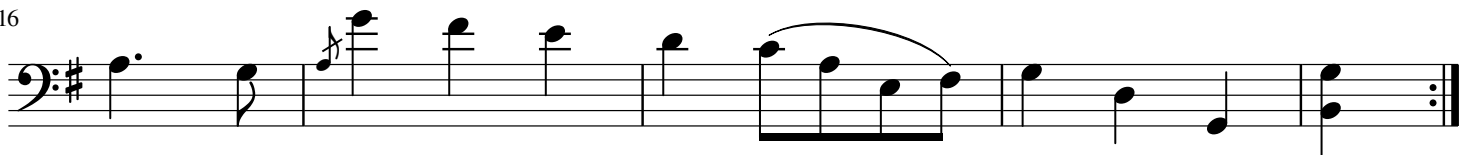
Measures 34-37 of the 'Waltz' section. Measure 34 has a quarter note G2 with a slur over it, followed by a quarter note F2. Measure 35 has a quarter note E2 with a slur over it, followed by a quarter note D2. Measure 36 has a quarter note C2 with a slur over it, followed by a quarter note B1. Measure 37 has a quarter note A1 with a slur over it, followed by a quarter note G2, ending with a double bar line and repeat dots.

D.S.

Lebenswecker

Walzer 5

Strauss



Lebenswecker

Strauss

Coda

0

0

6

6

11

11

16

16

21

21

26

26

32

32

37

37

41

41

45

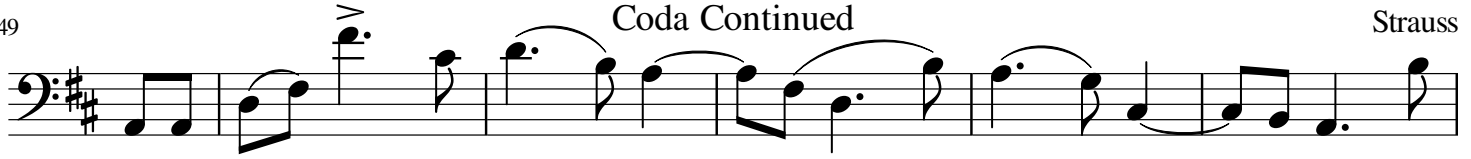
45

Lebenswecker

Coda Continued

Strauss

49



55



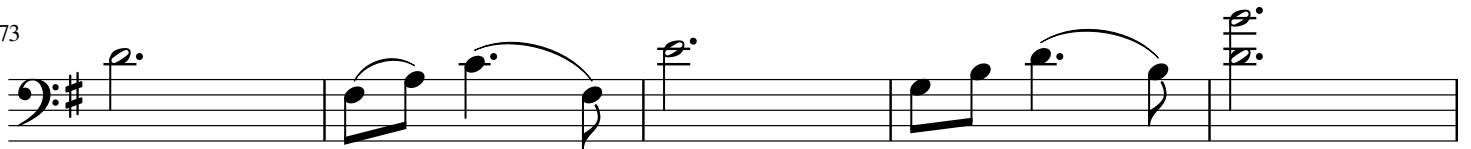
61



68



73



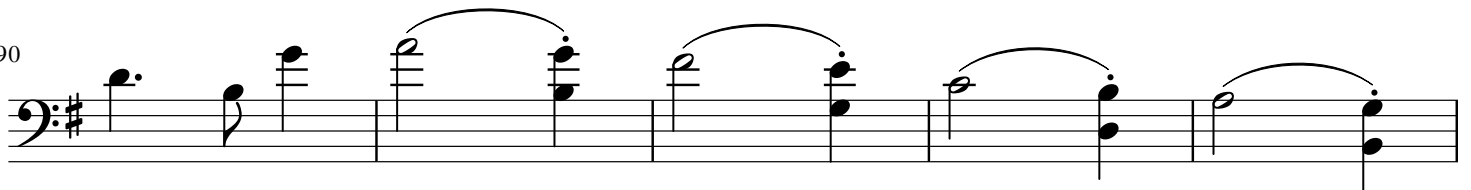
78



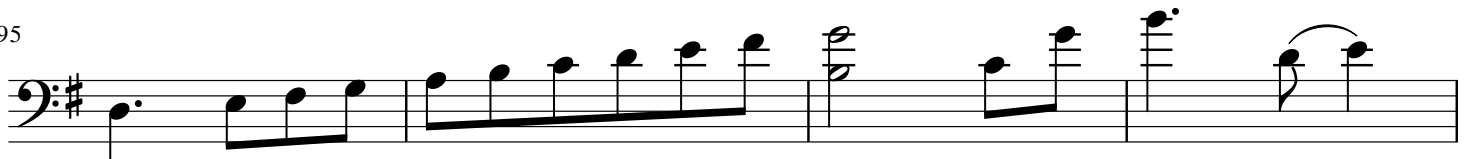
85



90



95



99

