

I^{te} Lieferung



DER

Kettenbrücke-Walzer

für das

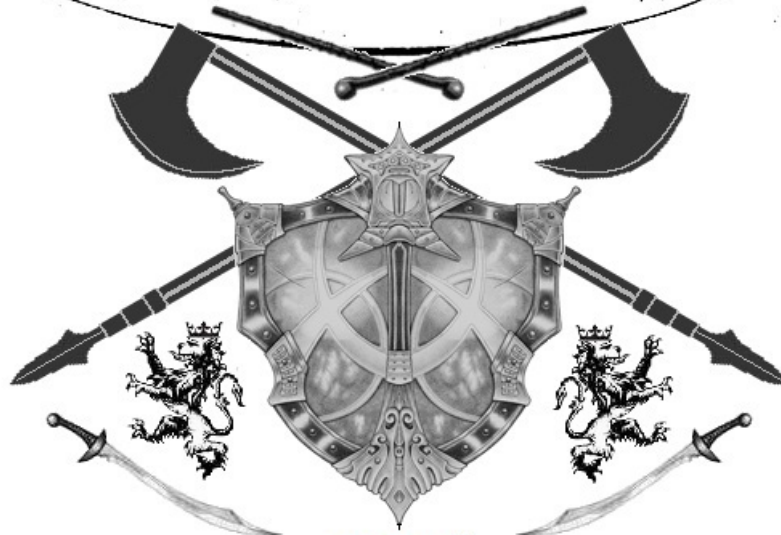
CELLO-SOLO

von

JOH. STRAUSS.

Eigenthum des Verlegers.

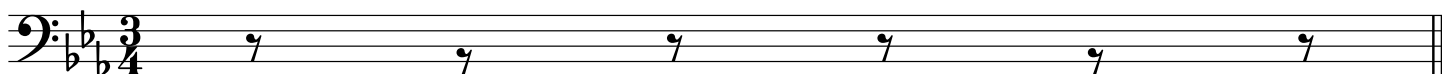
*Wien, bei Tobias Haslinger,
Musikverleger,
am Graben No 572, im Hause der ersten österr. Sparkasse.*



MS. US.

JSH

02/20/2016



Kettenbrücke

Introduction

Strauss

Andante

First staff of music, measures 1-5. Bass clef, key signature of one sharp (F#), 3/4 time signature. The music begins with a half note G2, followed by quarter notes G2, A2, B2, and a half note C3. The next measure contains quarter notes D3, E3, and a half note F#3. The final measure consists of quarter notes G3, A3, and a half note B3.

6

Second staff of music, measures 6-10. Measures 6-7: quarter notes G3, A3, and a half note B3. Measure 8: quarter notes C4, D4, and a half note E4. Measure 9: quarter notes F#4, G4, and a half note A4. Measure 10: quarter notes B4, C5, and a half note B4.

Kettenbrücke

Walzer 1

Strauss

Waltz

Third staff of music, measures 1-5. Bass clef, key signature of one sharp (F#), 3/4 time signature. The music begins with a half note G2, followed by quarter notes G2, A2, and a half note B2. The next measure contains quarter notes C3, D3, and a half note E3. The final measure consists of quarter notes F#3, G3, and a half note A3.

5

Fourth staff of music, measures 6-10. Measures 6-7: quarter notes B3, C4, and a half note D4. Measure 8: quarter notes E4, F#4, and a half note G4. Measure 9: quarter notes A4, B4, and a half note C5. Measure 10: quarter notes D5, E5, and a half note D5.

9

Fifth staff of music, measures 11-15. Measures 11-12: quarter notes C5, B4, and a half note A4. Measure 13: quarter notes G4, F#4, and a half note E4. Measure 14: quarter notes D4, C4, and a half note B3. Measure 15: quarter notes A3, G3, and a half note F#3.

13

Sixth staff of music, measures 16-20. Measures 16-17: quarter notes E3, D3, and a half note C3. Measure 18: quarter notes B2, A2, and a half note G2. Measure 19: quarter notes F#2, E2, and a half note D2. Measure 20: quarter notes C2, B1, and a half note A1.

17

Seventh staff of music, measures 21-25. Measures 21-22: quarter notes G2, A2, and a half note B2. Measure 23: quarter notes C3, D3, and a half note E3. Measure 24: quarter notes F#3, G3, and a half note A3. Measure 25: quarter notes B3, C4, and a half note D4.

21

Eighth staff of music, measures 26-30. Measures 26-27: quarter notes E4, D4, and a half note C4. Measure 28: quarter notes B3, A3, and a half note G3. Measure 29: quarter notes F#3, E3, and a half note D3. Measure 30: quarter notes C3, B2, and a half note A2.

25

Ninth staff of music, measures 31-35. Measures 31-32: quarter notes G2, A2, and a half note B2. Measure 33: quarter notes C3, D3, and a half note E3. Measure 34: quarter notes F#3, G3, and a half note A3. Measure 35: quarter notes B3, C4, and a half note D4.

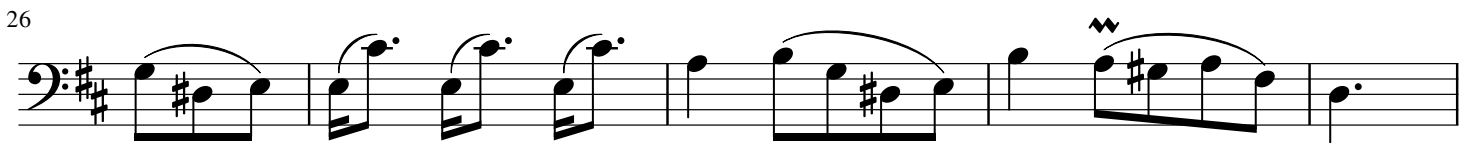
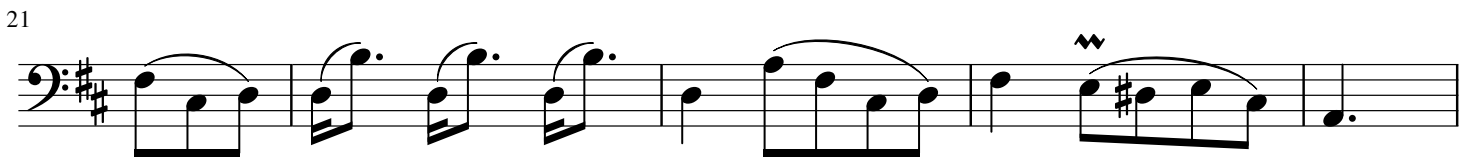
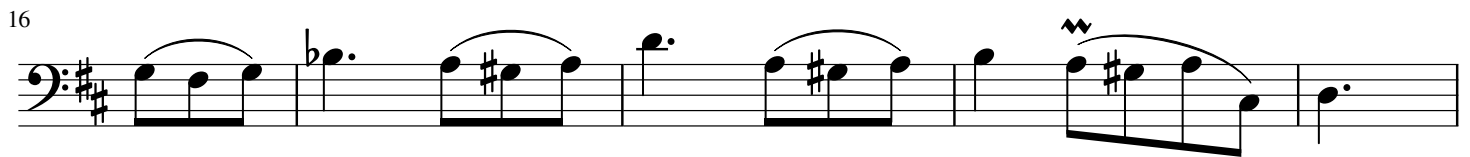
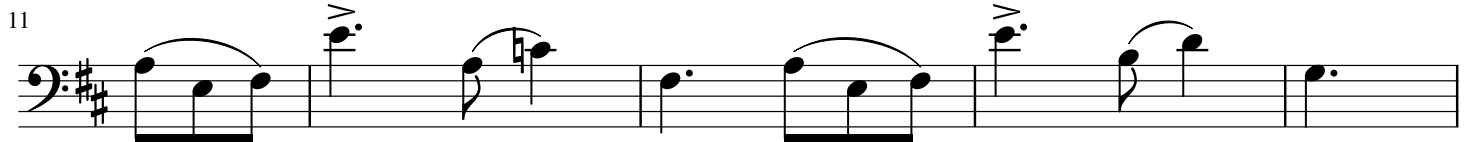
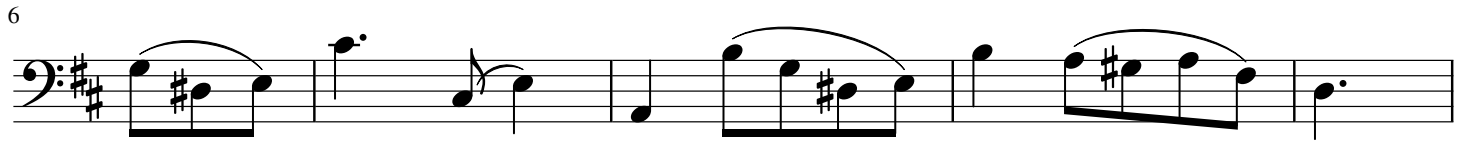
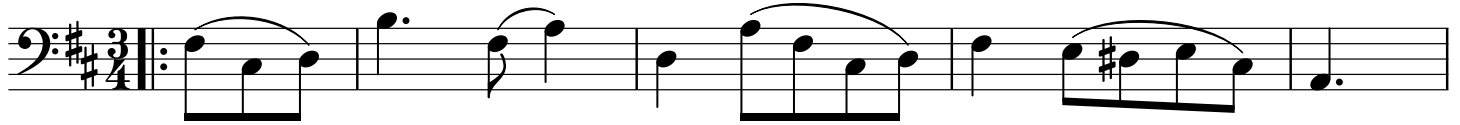
29

Tenth staff of music, measures 36-40. Measures 36-37: quarter notes G2, A2, and a half note B2. Measure 38: quarter notes C3, D3, and a half note E3. Measure 39: quarter notes F#3, G3, and a half note A3. Measure 40: quarter notes B3, C4, and a half note D4.

Kettenbrücke

Walzer 2

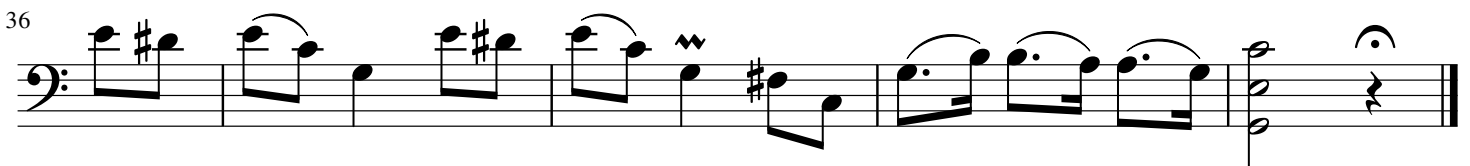
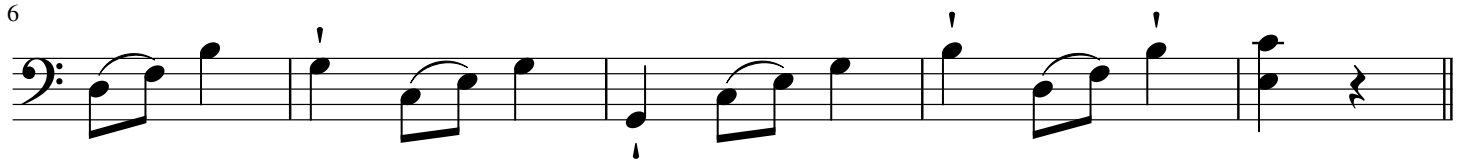
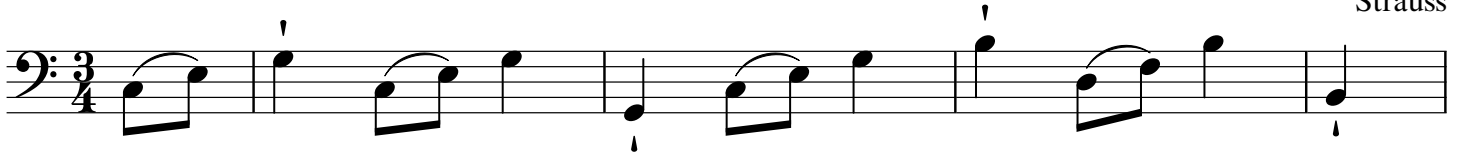
Strauss



Kettenbrücke

Walzer 3

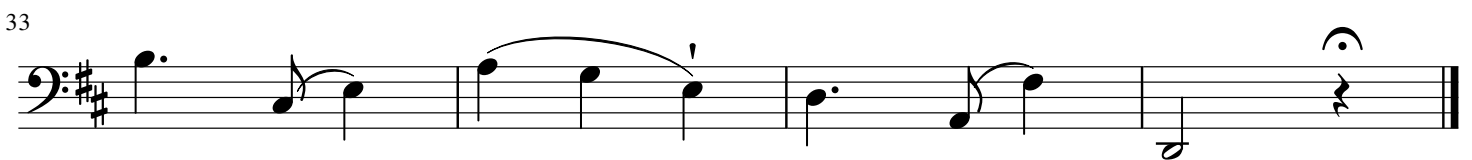
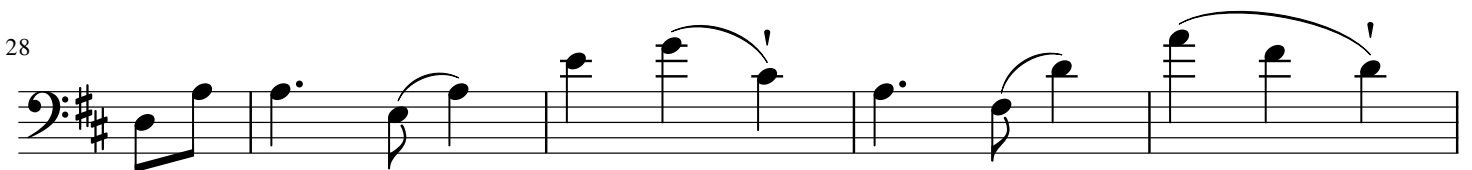
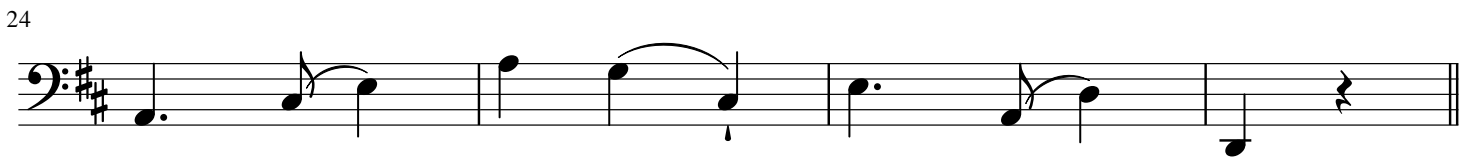
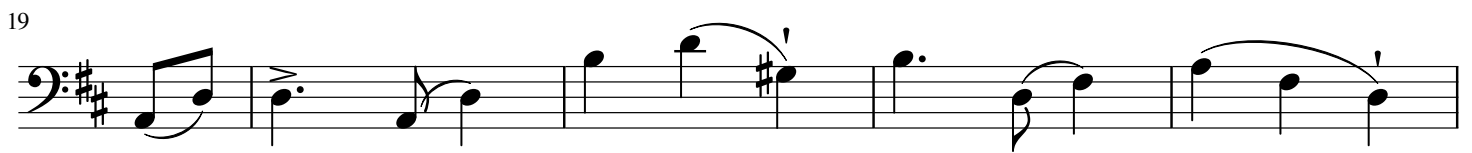
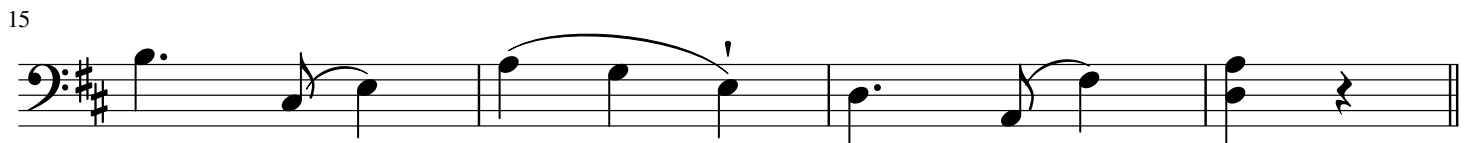
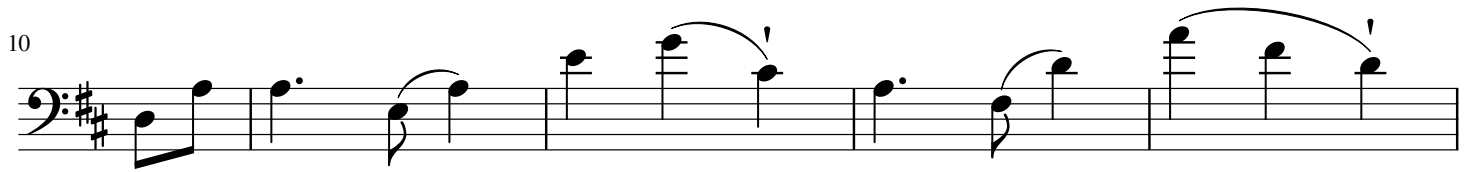
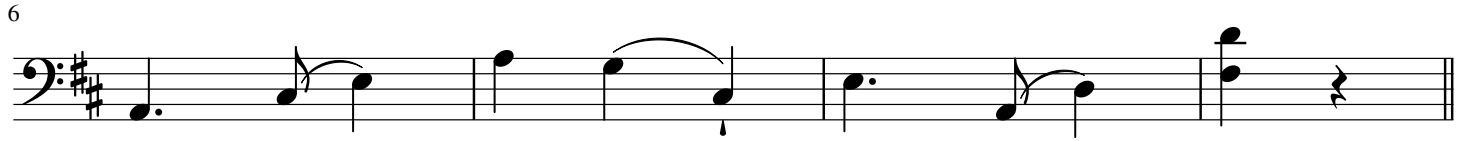
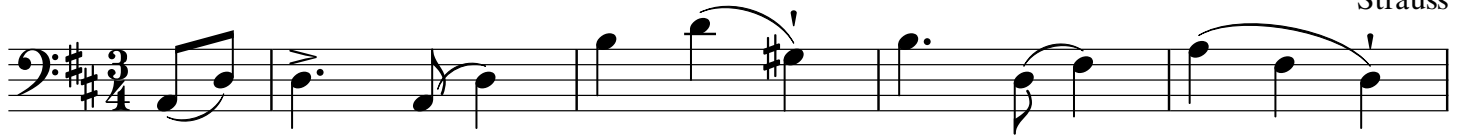
Strauss



Kettenbrücke

Walzer 4

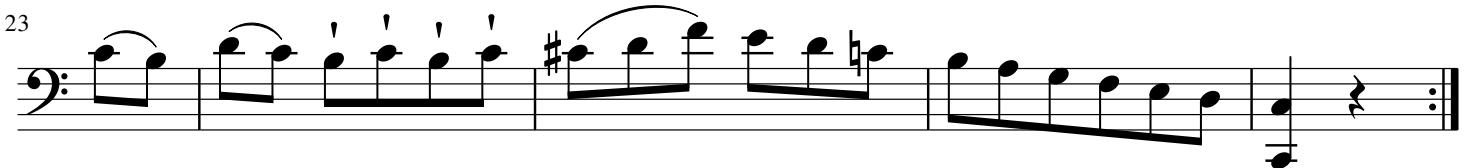
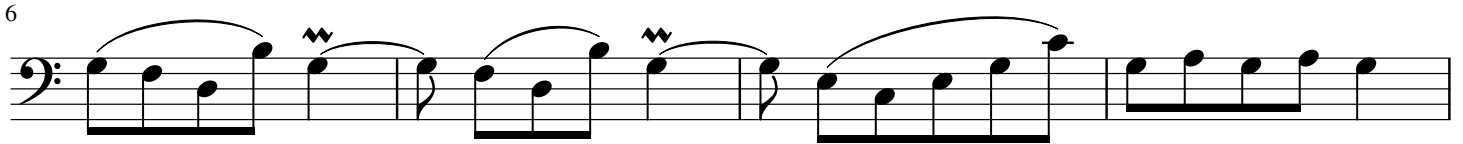
Strauss



Kettenbrücke

Walzer 5

Strauss



Kettenbrücke

Walzer 6

Strauss

1

6

10

14

18

22

27

31

35

39

Kettenbrücke

Coda

Strauss

