

ERINNERUNG AN BERLIN.

WALZER

für das Piano-Forte allein.

Ihrer königlichen



Hoheit durchlauchtigsten Frau

PREUSSEN

geboren am 31. März 1825 in Wien

in tiefster Ehrfurcht gewidmet

JOHANN STRAUSS.

78^{tes} Werk.

Original-Ausgabe.

Eigentum der Verleger.

N^o 6812.

Erstausgaben in das Recht der vereinigten Musikalienhändler gegen Nachdruck.

Preis — 45 c. A.
— 12 gr.

Wien, bei Tobias Haslinger.

k. k. Hof- u. priv. Kunst- und Musikalienhändler

Leipzig, in dessen Verlags-Expedition bei Hermann u. Langhans

Berlin, bei T. Trautwein.

Transposed for
Solo Cello

JSH

Erinnerung an Berlin

Introduction

Andante

Strauss

Measures 1-7 of the introduction. The music is in bass clef and 3/4 time. It begins with a half note G2, followed by quarter notes G2, A2, B2, and C3. The melody continues with quarter notes D3, E3, F3, and G3. The final measure (measure 7) contains a half note G3 with a fermata above it.

Measures 8-11. Measure 8 starts with a triplet of quarter notes G3, A3, B3. Measure 9 has a triplet of quarter notes C4, B3, A3. Measure 10 has a triplet of quarter notes G3, F3, E3, followed by a half note G3 with an accent (>) and a slur. Measure 11 has a triplet of quarter notes G3, F3, E3, followed by a half note G3 with an accent (>) and a slur.

Measures 12-14. Measure 12 has a triplet of quarter notes G3, A3, B3. Measure 13 has a triplet of quarter notes C4, B3, A3. Measure 14 has a triplet of quarter notes G3, F3, E3, followed by a half note G3.

Measures 15-17. Measure 15 has a triplet of quarter notes G3, A3, B3. Measure 16 has a triplet of quarter notes C4, B3, A3. Measure 17 has a triplet of quarter notes G3, F3, E3, followed by a half note G3 with a trill (tr) above it.

Measures 18-21. Measure 18 has a triplet of quarter notes G3, A3, B3. Measure 19 has a triplet of quarter notes C4, B3, A3. Measure 20 has a triplet of quarter notes G3, F3, E3, followed by a half note G3 with an accent (>) and a slur. Measure 21 has a triplet of quarter notes G3, F3, E3, followed by a half note G3 with an accent (>) and a slur.

Measures 22-24. Measure 22 has a triplet of quarter notes G3, A3, B3. Measure 23 has a triplet of quarter notes C4, B3, A3. Measure 24 has a triplet of quarter notes G3, F3, E3, followed by a half note G3.

Measures 25-28. Measure 25 has a triplet of quarter notes G3, A3, B3. Measure 26 has a triplet of quarter notes C4, B3, A3. Measure 27 has a triplet of quarter notes G3, F3, E3, followed by a half note G3 with a trill (tr) above it. Measure 28 has a triplet of quarter notes G3, A3, B3.

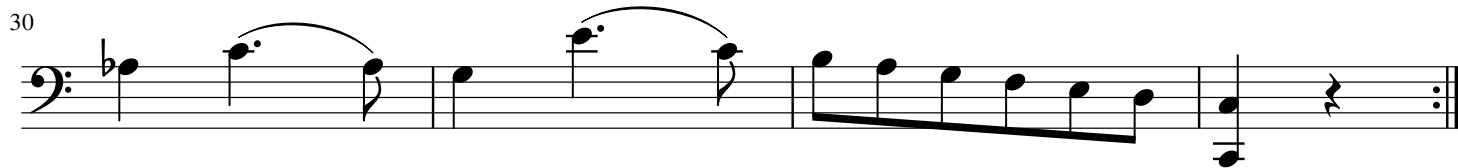
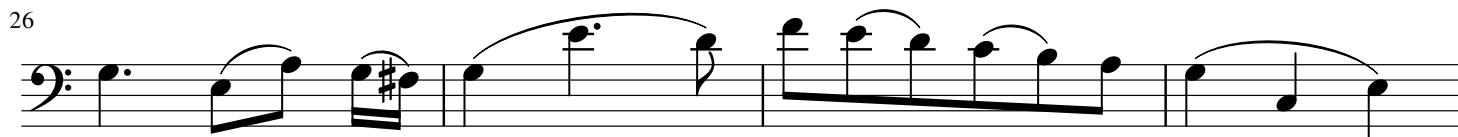
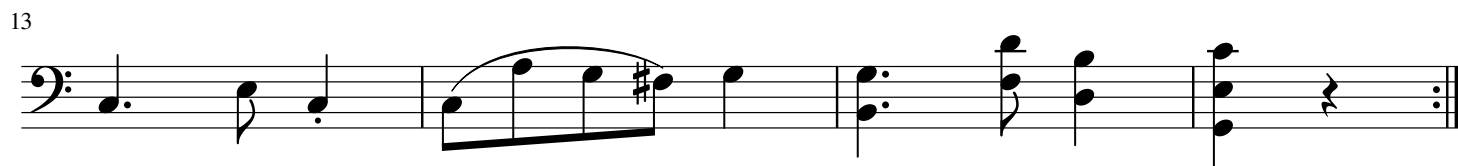
Measures 29-32. Measure 29 has a dotted quarter note G2, followed by a quarter note G2. Measure 30 has a dotted quarter note A2, followed by a quarter note A2. Measure 31 has a dotted quarter note B2, followed by a quarter note B2. Measure 32 has a dotted quarter note C3, followed by a quarter note C3.

Measures 33-36. Measure 33 has a dotted quarter note G2, followed by a quarter note G2. Measure 34 has a dotted quarter note A2, followed by a quarter note A2. Measure 35 has a dotted quarter note B2, followed by a quarter note B2. Measure 36 has a dotted quarter note C3, followed by a quarter note C3.

Erinnerung an Berlin

Waltz 1

Strauss



Erinnerung an Berlin

Waltz 2

Strauss

5

5

9

9

13

13

17

17

22

22

26

26

30

30

34

34

D.S.

4

Erinnerung an Berlin 3 full

Waltz 3

Strauss

6/8 V

3 3

Detailed description: This block contains the first five measures of the piece. It begins with a treble clef, a key signature of one sharp (F#), and a 6/8 time signature. A 'V' symbol is placed above the first measure. The melody consists of eighth and sixteenth notes, with several measures containing triplets. The first triplet is in measures 4 and 5, and the second is in measures 1 and 2. The piece ends with a double bar line.

6

3 3 3

Detailed description: This block contains measures 6, 7, and 8. Measure 6 features a triplet of eighth notes. Measures 7 and 8 continue the melodic line with eighth notes and a final triplet of eighth notes. The piece ends with a double bar line.

10

3 3

Detailed description: This block contains measures 9, 10, and 11. Measure 9 starts with a quarter note, followed by eighth notes in measure 10. Measure 11 contains a triplet of eighth notes. The piece ends with a double bar line.

15

3 3

Detailed description: This block contains measures 12, 13, and 14. Measure 12 begins with a quarter note, followed by eighth notes in measure 13. Measure 14 contains a triplet of eighth notes. The piece ends with a double bar line.

19

Detailed description: This block contains measures 15, 16, 17, and 18. Measure 15 starts with a quarter note, followed by eighth notes in measure 16. Measure 17 contains a triplet of eighth notes. The piece ends with a double bar line.

24

Detailed description: This block contains measures 19, 20, 21, 22, and 23. Measure 19 starts with a quarter note, followed by eighth notes in measure 20. Measure 21 contains a triplet of eighth notes. The piece ends with a double bar line.

28

Detailed description: This block contains measures 24, 25, 26, and 27. Measure 24 starts with a quarter note, followed by eighth notes in measure 25. Measure 26 contains a triplet of eighth notes. The piece ends with a double bar line.

33

Detailed description: This block contains measures 28, 29, 30, 31, and 32. Measure 28 starts with a quarter note, followed by eighth notes in measure 29. Measure 30 contains a triplet of eighth notes. The piece ends with a double bar line.

Erinnerung an Berlin

Waltz 4

Strauss

5/4

Erinnerung an Berlin

Waltz 5

Strauss

♩

Measures 1-5 of the bass line. Measure 1 starts with a treble clef, a key signature of one sharp (F#), and a 3/4 time signature. A repeat sign is present. The melody consists of quarter and eighth notes with various articulations like slurs and accents.

6

Measures 6-7. Measure 6 continues the melodic line with slurs and accents. Measure 7 features a chordal texture with a bass note and a higher interval.

10

Measures 10-13. Measure 10 has a repeat sign. The melody continues with slurs and accents. Measure 13 ends with a repeat sign.

14

Measures 14-17. Measure 14 starts with an accent. The melody continues with slurs and accents. Measure 17 ends with a repeat sign.

18

Measures 18-22. Measure 18 has a repeat sign. The melody continues with slurs and accents. Measure 22 ends with a repeat sign.

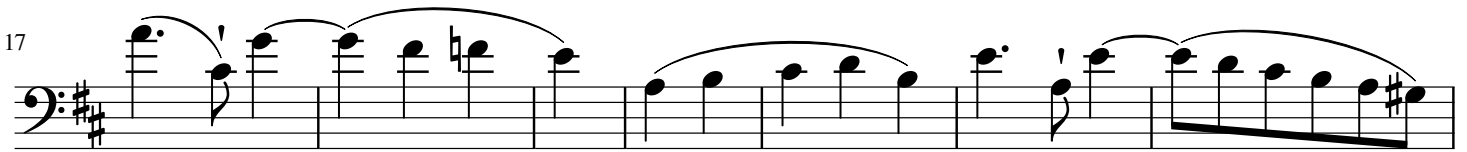
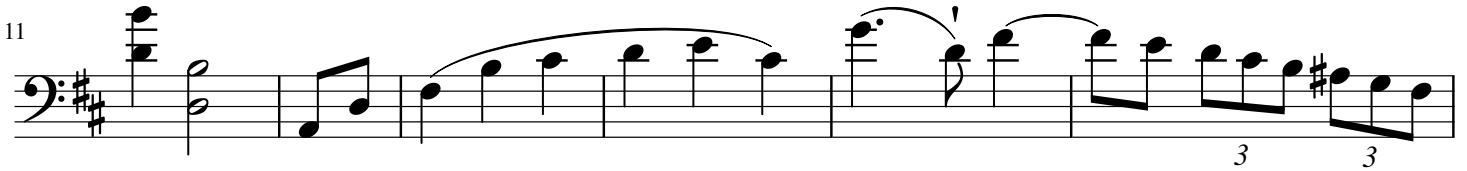
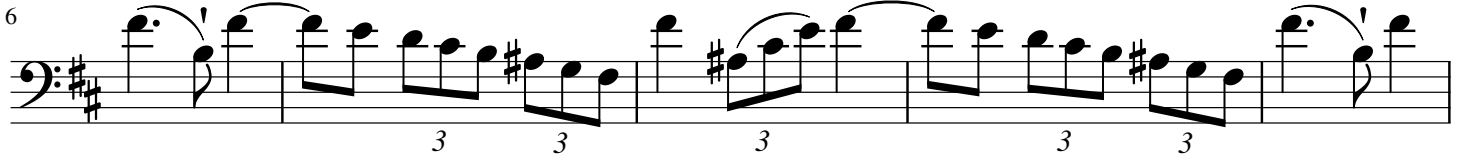
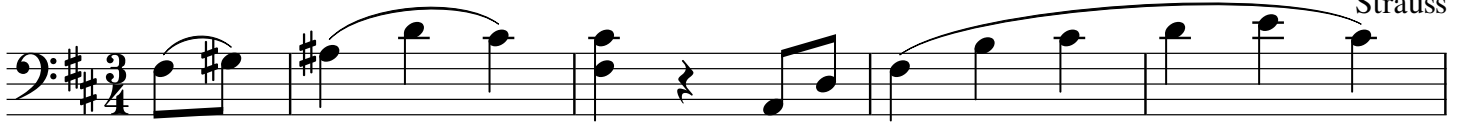
23

Measures 23-26. Measure 23 has an accent. The melody continues with slurs and accents. Measure 24 has a key signature change to two sharps (F# and C#). Measures 25 and 26 are first and second endings, both ending with repeat signs.

Erinnerung an Berlin

Coda

Strauss

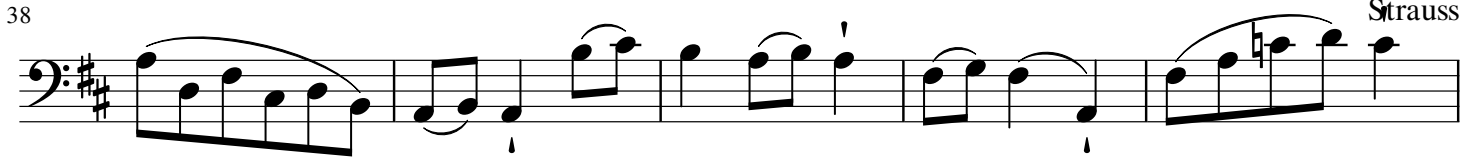


Erinnerung an Berlin

Coda Continued

Strauss

38



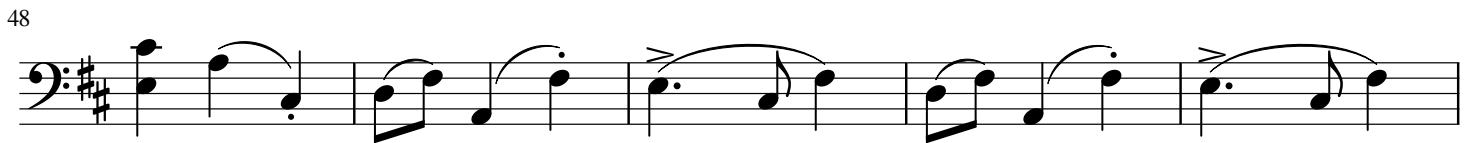
Staff 38-42: Bass clef, key signature of two sharps (F# and C#). Measures 38-42. The melody consists of eighth and quarter notes with various slurs and accents.

43



Staff 43-47: Bass clef, key signature of two sharps. Measures 43-47. The melody continues with eighth and quarter notes, including a flat sign in measure 44.

48



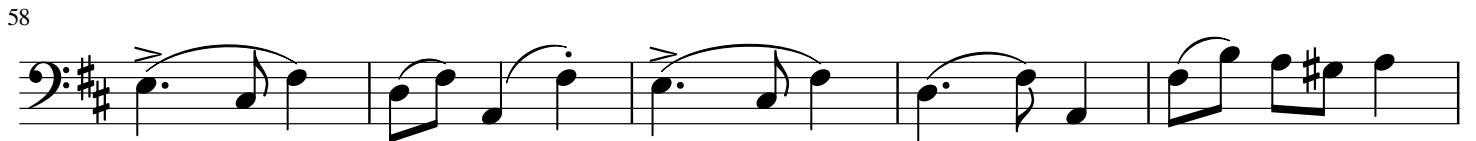
Staff 48-52: Bass clef, key signature of two sharps. Measures 48-52. The melody features eighth and quarter notes with slurs and accents.

53



Staff 53-57: Bass clef, key signature of two sharps. Measures 53-57. The melody continues with eighth and quarter notes, including a sharp sign in measure 54.

58



Staff 58-62: Bass clef, key signature of two sharps. Measures 58-62. The melody features eighth and quarter notes with slurs and accents.

63



Staff 63-67: Bass clef, key signature of two sharps. Measures 63-67. The melody includes eighth and quarter notes with slurs and accents.

68



Staff 68-72: Bass clef, key signature of two sharps. Measures 68-72. The melody concludes with eighth and quarter notes, ending with a double bar line.