



Donau-Lieder
(Chants du Danube)
Walzer



Transposed for Solo Cello

Donau-Lieder

Introduction

Waltz

Strauss

4/4

Measures 1-3: Bass clef, 4/4 time signature. Measure 1: quarter notes G2, A2, B2, C3. Measure 2: quarter notes D3, E3, F3, G3. Measure 3: quarter notes A3, B3, C4, D4.

4

Measures 4-7: Measure 4: quarter notes E4, F4, G4, A4. Measure 5: quarter notes B4, C5, D5, E5. Measure 6: quarter notes F5, G5, A5, B5. Measure 7: quarter notes C6, D6, E6, F6.

8

Measures 8-11: Measure 8: quarter notes G5, A5, B5, C6. Measure 9: quarter notes D6, E6, F6, G6. Measure 10: quarter notes A6, B6, C7, D7. Measure 11: quarter notes E7, F7, G7, A7.

12

Measures 12-15: Measure 12: quarter notes B7, C8, D8, E8. Measure 13: quarter notes F8, G8, A8, B8. Measure 14: quarter notes C9, D9, E9, F9. Measure 15: quarter notes G9, A9, B9, C10.

16

Measures 16-18: Measure 16: quarter notes D10, E10, F10, G10. Measure 17: quarter notes A10, B10, C11, D11. Measure 18: quarter notes E11, F11, G11, A11.

19

Measures 19-22: Measure 19: quarter notes B11, C12, D12, E12. Measure 20: quarter notes F12, G12, A12, B12. Measure 21: quarter notes C13, D13, E13, F13. Measure 22: quarter notes G13, A13, B13, C14.

23

Measures 23-26: Measure 23: quarter notes D14, E14, F14, G14. Measure 24: quarter notes A14, B14, C15, D15. Measure 25: quarter notes E15, F15, G15, A15. Measure 26: quarter notes B15, C16, D16, E16.

27

Measures 27-30: Measure 27: quarter notes F16, G16, A16, B16. Measure 28: quarter notes C17, D17, E17, F17. Measure 29: quarter notes G17, A17, B17, C18. Measure 30: quarter notes D18, E18, F18, G18.

Donau-Lieder

Walzer 1

Strauss

♩

Measures 1-4 of the first staff. The music begins with a repeat sign and a common time signature. The first measure contains a quarter note G2, followed by a quarter note A2, and a quarter note B2. The second measure contains a quarter note C3, followed by a quarter note D3, and a quarter note E3. The third measure contains a quarter note F3, followed by a quarter note G3, and a quarter note A3. The fourth measure contains a quarter note B3, followed by a quarter note C4, and a quarter note D4.

6

Measures 5-8 of the second staff. The fifth measure contains a quarter note E4, followed by a quarter note F4, and a quarter note G4. The sixth measure contains a quarter note A4, followed by a quarter note B4, and a quarter note C5. The seventh measure contains a quarter note D5, followed by a quarter note E5, and a quarter note F5. The eighth measure contains a quarter note G5, followed by a quarter note A5, and a quarter note B5.

11

Measures 9-12 of the third staff. The ninth measure contains a quarter note C6, followed by a quarter note D6, and a quarter note E6. The tenth measure contains a quarter note F6, followed by a quarter note G6, and a quarter note A6. The eleventh measure contains a quarter note B6, followed by a quarter note C7, and a quarter note D7. The twelfth measure contains a quarter note E7, followed by a quarter note F7, and a quarter note G7.

15

Measures 13-16 of the fourth staff. The thirteenth measure contains a quarter note A6, followed by a quarter note B6, and a quarter note C7. The fourteenth measure contains a quarter note D7, followed by a quarter note E7, and a quarter note F7. The fifteenth measure contains a quarter note G7, followed by a quarter note A7, and a quarter note B7. The sixteenth measure contains a quarter note C8, followed by a quarter note D8, and a quarter note E8.

20

Measures 17-20 of the fifth staff. The seventeenth measure contains a quarter note F7, followed by a quarter note G7, and a quarter note A7. The eighteenth measure contains a quarter note B7, followed by a quarter note C8, and a quarter note D8. The nineteenth measure contains a quarter note E8, followed by a quarter note F8, and a quarter note G8. The twentieth measure contains a quarter note A8, followed by a quarter note B8, and a quarter note C9.

25

Measures 21-24 of the sixth staff. The twenty-first measure contains a quarter note D8, followed by a quarter note E8, and a quarter note F8. The twenty-second measure contains a quarter note G8, followed by a quarter note A8, and a quarter note B8. The twenty-third measure contains a quarter note C9, followed by a quarter note D9, and a quarter note E9. The twenty-fourth measure contains a quarter note F9, followed by a quarter note G9, and a quarter note A9.

30

Measures 25-28 of the seventh staff. The twenty-fifth measure contains a quarter note B8, followed by a quarter note C9, and a quarter note D9. The twenty-sixth measure contains a quarter note E9, followed by a quarter note F9, and a quarter note G9. The twenty-seventh measure contains a quarter note A9, followed by a quarter note B9, and a quarter note C10. The twenty-eighth measure contains a quarter note D10, followed by a quarter note E10, and a quarter note F10.

35

Measures 29-32 of the eighth staff. The twenty-ninth measure contains a quarter note G9, followed by a quarter note A9, and a quarter note B9. The thirtieth measure contains a quarter note C10, followed by a quarter note D10, and a quarter note E10. The thirty-first measure contains a quarter note F10, followed by a quarter note G10, and a quarter note A10. The thirty-second measure contains a quarter note B10, followed by a quarter note C11, and a quarter note D11.

D.S.

Donau-Lieder

Walzer 2

Strauss

1

5

9

13

17

21

25

29

Donau-Lieder

Walzer 3

Strauss

6

Measures 1-5: Bass clef, 3/4 time signature. Measure 1: Repeat sign, quarter notes G2, A2, B2, C3. Measure 2: Quarter notes D3, E3, F3, G3. Measure 3: Quarter notes A3, B3, C4, D4. Measure 4: Quarter notes E4, F4, G4, A4. Measure 5: Quarter notes B4, C5, D5, E5. First ending bracket under measures 1-5.

6

Measures 6-10: Bass clef. Measure 6: Quarter notes G2, A2, B2, C3. Measure 7: Quarter notes D3, E3, F3, G3. Measure 8: Quarter notes A3, B3, C4, D4. Measure 9: Quarter notes E4, F4, G4, A4. Measure 10: Quarter notes B4, C5, D5, E5. Trills above measures 7, 8, and 9.

11

Measures 11-15: Bass clef. Measure 11: Quarter notes G2, A2, B2, C3. Measure 12: Quarter notes D3, E3, F3, G3. Measure 13: Quarter notes A3, B3, C4, D4. Measure 14: Quarter notes E4, F4, G4, A4. Measure 15: Quarter notes B4, C5, D5, E5. First ending bracket under measures 11-15.

16

Measures 16-20: Bass clef. Measure 16: Quarter notes G2, A2, B2, C3. Measure 17: Quarter notes D3, E3, F3, G3. Measure 18: Quarter notes A3, B3, C4, D4. Measure 19: Quarter notes E4, F4, G4, A4. Measure 20: Quarter notes B4, C5, D5, E5. Trills above measures 17, 18, and 19. Second ending bracket under measures 16-20.

21

Measures 21-25: Bass clef. Measure 21: Quarter notes G2, A2, B2, C3. Measure 22: Quarter notes D3, E3, F3, G3. Measure 23: Quarter notes A3, B3, C4, D4. Measure 24: Quarter notes E4, F4, G4, A4. Measure 25: Quarter notes B4, C5, D5, E5. First ending bracket under measures 21-25.

26

Measures 26-30: Bass clef. Measure 26: Quarter notes G2, A2, B2, C3. Measure 27: Quarter notes D3, E3, F3, G3. Measure 28: Quarter notes A3, B3, C4, D4. Measure 29: Quarter notes E4, F4, G4, A4. Measure 30: Quarter notes B4, C5, D5, E5. Trills above measures 27, 28, and 29.

31

Measures 31-35: Bass clef. Measure 31: Quarter notes G2, A2, B2, C3. Measure 32: Quarter notes D3, E3, F3, G3. Measure 33: Quarter notes A3, B3, C4, D4. Measure 34: Quarter notes E4, F4, G4, A4. Measure 35: Quarter notes B4, C5, D5, E5. Trills above measures 32, 33, and 34.

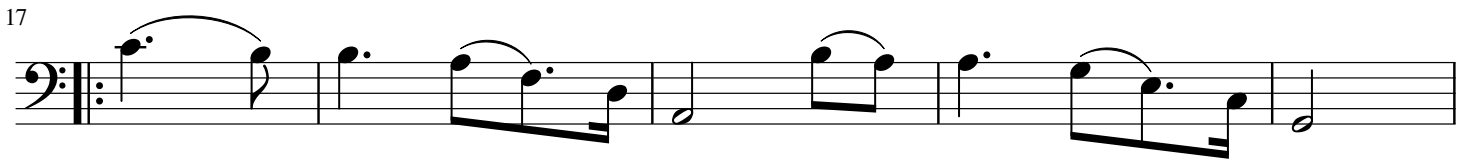
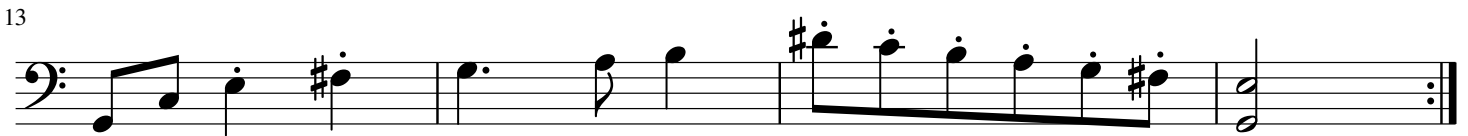
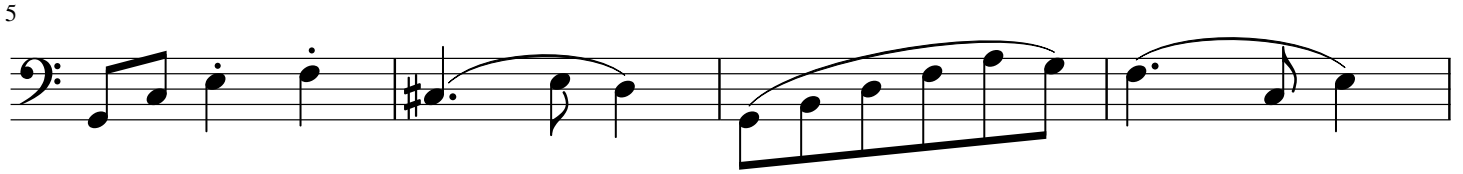
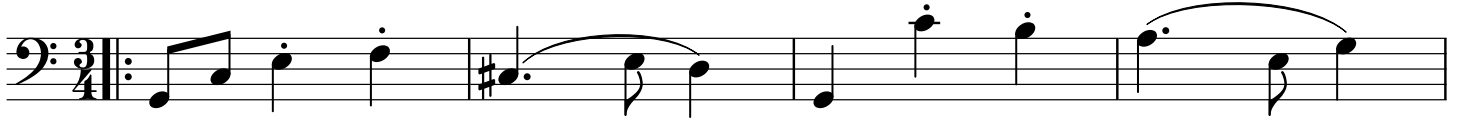
36

Measures 36-40: Bass clef. Measure 36: Quarter notes G2, A2, B2, C3. Measure 37: Quarter notes D3, E3, F3, G3. Measure 38: Quarter notes A3, B3, C4, D4. Measure 39: Quarter notes E4, F4, G4, A4. Measure 40: Quarter notes B4, C5, D5, E5. Trills above measures 37, 38, and 39. Second ending bracket under measures 36-40.

Donau-Lieder

Walzer 4

Strauss



Donau-Lieder

Walzer 5

Strauss

Eingang

Measures 1-4 of the introduction. The music is in bass clef, key of D major (one sharp), and 3/4 time. It features a steady eighth-note bass line with a melodic line of eighth notes above it.

5 Walzer

Measures 5-8 of the waltz. The melody continues with eighth-note patterns and includes a fermata over the eighth measure.

Measures 9-13 of the waltz. The melody continues with eighth-note patterns and includes a fermata over the eleventh measure.

Measures 14-18 of the waltz. The melody continues with eighth-note patterns and includes a fermata over the eighteenth measure.

Measures 19-23 of the waltz. The melody continues with eighth-note patterns and includes a fermata over the twenty-third measure.

Measures 24-28 of the waltz. The melody continues with eighth-note patterns and includes a fermata over the twenty-eighth measure.

Measures 29-33 of the waltz. The melody continues with eighth-note patterns and includes a fermata over the thirty-third measure.

Measures 34-38 of the waltz. The melody continues with eighth-note patterns and includes a fermata over the thirty-eighth measure.

Measures 39-43 of the waltz. The melody continues with eighth-note patterns and includes a fermata over the forty-third measure.

Donau-Lieder

Coda

Strauss

1

6

11

16

21

26

30

34

38

42

Donau-Lieder

Coda Continued

Strauss

47

54

60

66

71

76

81

86

91

96