



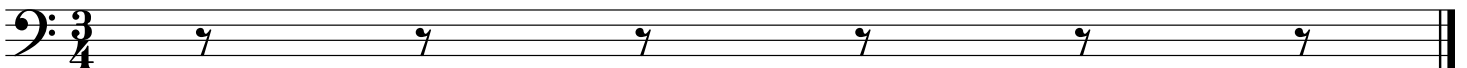
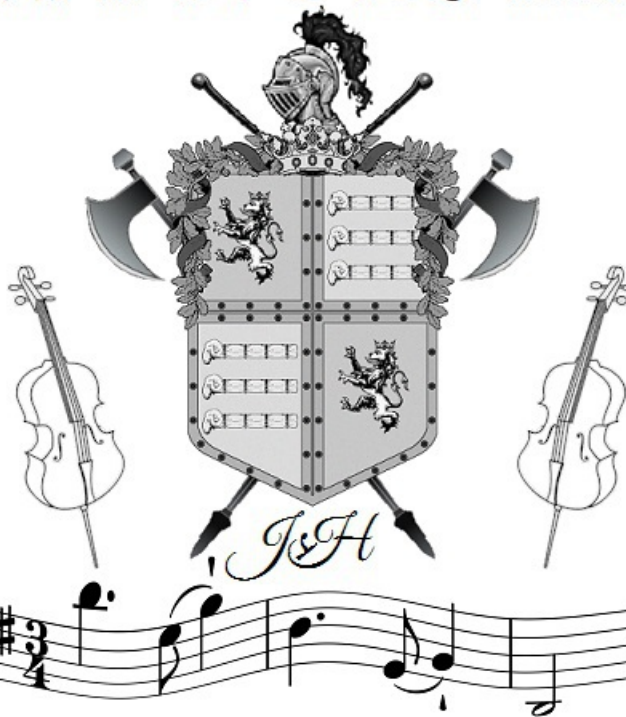
DIE PUBLICISTEN

Op. 321

WALZER
für das
Solo Cello

von

JOHANN STRAUSS II



Allegro animato

Die Publicisten

Introduction

Strauss

6

11

17

20

23

28

33

37

40

44

2

Die Publicisten

Walzer

Walzer 1

Strauss

First musical staff, measures 1-5. Bass clef, key signature of two sharps (F# and C#), 3/4 time signature. The melody begins with a quarter note G2, followed by quarter notes A2, B2, and C3, then a half note D3. The next measure contains a quarter note E3, a quarter note F#3, and a quarter note G3. The third measure has a quarter note A3, a quarter note B3, and a quarter note C4. The fourth measure features a quarter note D4, a quarter note E4, and a quarter note F#4. The fifth measure consists of a quarter note G4, a quarter note A4, and a quarter note B4.

Second musical staff, measures 6-10. Measures 6-7 continue the previous melody. Measure 8 has a quarter note C5, a quarter note B4, and a quarter note A4. Measure 9 has a quarter note G4, a quarter note F#4, and a quarter note E4. Measure 10 has a quarter note D4, a quarter note C4, and a quarter note B3.

Third musical staff, measures 11-15. Measures 11-12 continue the previous melody. Measure 13 has a quarter note A3, a quarter note B3, and a quarter note C4. Measure 14 has a quarter note D4, a quarter note E4, and a quarter note F#4. Measure 15 has a quarter note G4, a quarter note A4, and a quarter note B4.

Fourth musical staff, measures 16-20. Measures 16-17 continue the previous melody. Measure 18 has a quarter note C5, a quarter note B4, and a quarter note A4. Measure 19 has a quarter note G4, a quarter note F#4, and a quarter note E4. Measure 20 has a quarter note D4, a quarter note C4, and a quarter note B3.

Fifth musical staff, measures 21-24. Measures 21-22 continue the previous melody. Measure 23 has a quarter note A3, a quarter note B3, and a quarter note C4. Measure 24 has a quarter note D4, a quarter note E4, and a quarter note F#4.

Sixth musical staff, measures 25-28. Measures 25-26 continue the previous melody. Measure 27 has a quarter note G4, a quarter note F#4, and a quarter note E4. Measure 28 has a quarter note D4, a quarter note C4, and a quarter note B3.

Seventh musical staff, measures 29-32. Measures 29-30 continue the previous melody. Measure 31 has a quarter note A3, a quarter note B3, and a quarter note C4. Measure 32 has a quarter note D4, a quarter note E4, and a quarter note F#4.

Eighth musical staff, measures 33-37. Measures 33-34 continue the previous melody. Measure 35 has a quarter note G4, a quarter note F#4, and a quarter note E4. Measure 36 has a quarter note D4, a quarter note C4, and a quarter note B3. Measure 37 has a quarter note A3, a quarter note B3, and a quarter note C4.

Ninth musical staff, measures 38-42. Measures 38-39 continue the previous melody. Measure 40 has a quarter note D4, a quarter note E4, and a quarter note F#4. Measure 41 has a quarter note G4, a quarter note A4, and a quarter note B4. Measure 42 has a quarter note C5, a quarter note B4, and a quarter note A4.

Tenth musical staff, measures 43-47. Measures 43-44 continue the previous melody. Measure 45 has a quarter note G4, a quarter note F#4, and a quarter note E4. Measure 46 has a quarter note D4, a quarter note C4, and a quarter note B3. Measure 47 has a quarter note A3, a quarter note B3, and a quarter note C4.

Eleventh musical staff, measures 48-52. Measures 48-49 continue the previous melody. Measure 50 has a quarter note D4, a quarter note E4, and a quarter note F#4. Measure 51 has a quarter note G4, a quarter note A4, and a quarter note B4. Measure 52 has a quarter note C5, a quarter note B4, and a quarter note A4.

Twelfth musical staff, measures 53-57. Measures 53-54 continue the previous melody. Measure 55 has a quarter note G4, a quarter note F#4, and a quarter note E4. Measure 56 has a quarter note D4, a quarter note C4, and a quarter note B3. Measure 57 has a quarter note A3, a quarter note B3, and a quarter note C4.

Thirteenth musical staff, measures 58-62. Measures 58-59 continue the previous melody. Measure 60 has a quarter note G4, a quarter note F#4, and a quarter note E4. Measure 61 has a quarter note D4, a quarter note C4, and a quarter note B3. Measure 62 has a quarter note A3, a quarter note B3, and a quarter note C4.

Die Publicisten

Walzer 2

Strauss

5

10

14

19

23

28

33

37

42

46

50

Die Publicisten

Strauss

Eingang

Walzer 3

Measures 1-4: Bass clef, 3/4 time signature. Measure 1 starts with a whole rest. The melody begins in measure 2 with a quarter note G2, followed by quarter notes F2, E2, D2, C2, B1, A1, G1. Measure 3 contains a whole note chord G2-B2-D3. Measure 4 continues the descending eighth-note sequence: G1, F1, E1, D1, C1, B0, A0.

5 Walzer

Measures 5-8: Bass clef, 3/4 time signature. Measure 5: quarter note G2, quarter note F2, quarter note E2. Measure 6: quarter note D2, quarter note C2, quarter note B1. Measure 7: quarter note A1, quarter note G1, quarter note F1. Measure 8: quarter note E1, quarter note D1, quarter note C1.

Measures 9-12: Bass clef, 3/4 time signature. Measure 9: quarter note B1, quarter note A1, quarter note G1. Measure 10: quarter note F1, quarter note E1, quarter note D1. Measure 11: quarter note C1, quarter note B0, quarter note A0. Measure 12: quarter note G0, quarter note F0, quarter note E0.

Measures 13-16: Bass clef, 3/4 time signature. Measure 13: quarter note D2, quarter note C2, quarter note B1. Measure 14: quarter note A1, quarter note G1, quarter note F1. Measure 15: quarter note E1, quarter note D1, quarter note C1. Measure 16: quarter note B0, quarter note A0, quarter note G0.

Measures 17-20: Bass clef, 3/4 time signature. Measure 17: quarter note F2, quarter note E2, quarter note D2. Measure 18: quarter note C2, quarter note B1, quarter note A1. Measure 19: quarter note G1, quarter note F1, quarter note E1. Measure 20: quarter note D1, quarter note C1, quarter note B0.

Measures 21-24: Bass clef, 3/4 time signature. Measure 21: quarter note A1, quarter note G1, quarter note F1. Measure 22: quarter note E1, quarter note D1, quarter note C1. Measure 23: quarter note B0, quarter note A0, quarter note G0. Measure 24: quarter note F0, quarter note E0, quarter note D0.

Measures 25-28: Bass clef, 3/4 time signature. Measure 25: quarter note C2, quarter note B1, quarter note A1. Measure 26: quarter note G1, quarter note F1, quarter note E1. Measure 27: quarter note D1, quarter note C1, quarter note B0. Measure 28: quarter note A0, quarter note G0, quarter note F0.

Measures 29-32: Bass clef, 3/4 time signature. Measure 29: quarter note E1, quarter note D1, quarter note C1. Measure 30: quarter note B0, quarter note A0, quarter note G0. Measure 31: quarter note F0, quarter note E0, quarter note D0. Measure 32: quarter note C0, quarter note B0, quarter note A0.

Measures 33-36: Bass clef, 3/4 time signature. Measure 33: quarter note G1, quarter note F1, quarter note E1. Measure 34: quarter note D1, quarter note C1, quarter note B0. Measure 35: quarter note A0, quarter note G0, quarter note F0. Measure 36: quarter note E0, quarter note D0, quarter note C0.

Measures 37-40: Bass clef, 3/4 time signature. Measure 37: quarter note C2, quarter note B1, quarter note A1. Measure 38: quarter note G1, quarter note F1, quarter note E1. Measure 39: quarter note D1, quarter note C1, quarter note B0. Measure 40: quarter note A0, quarter note G0, quarter note F0.

Measures 41-44: Bass clef, 3/4 time signature. Measure 41: quarter note E1, quarter note D1, quarter note C1. Measure 42: quarter note B0, quarter note A0, quarter note G0. Measure 43: quarter note F0, quarter note E0, quarter note D0. Measure 44: quarter note C0, quarter note B0, quarter note A0.

Die Publicisten

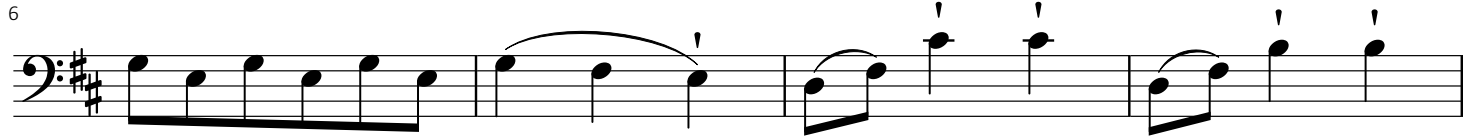
Walzer 4 Continued

Strauss



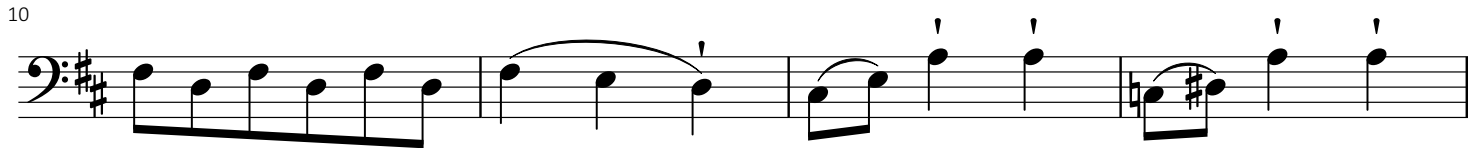
First staff of music, bass clef, key signature of two sharps (F# and C#). It begins with a double bar line and a wavy line below the first note. The melody consists of eighth and quarter notes with various phrasing slurs and accents.

6



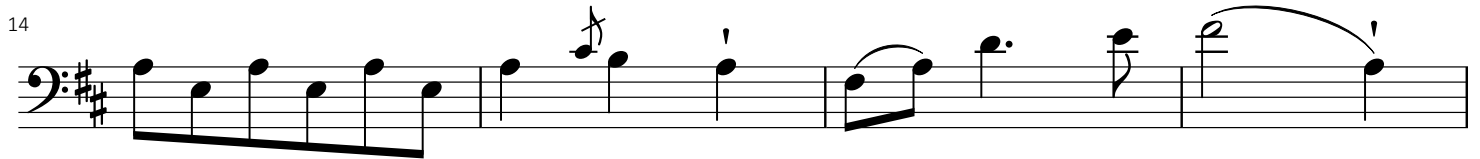
Second staff of music, starting at measure 6. It continues the melodic line with similar phrasing and articulation.

10



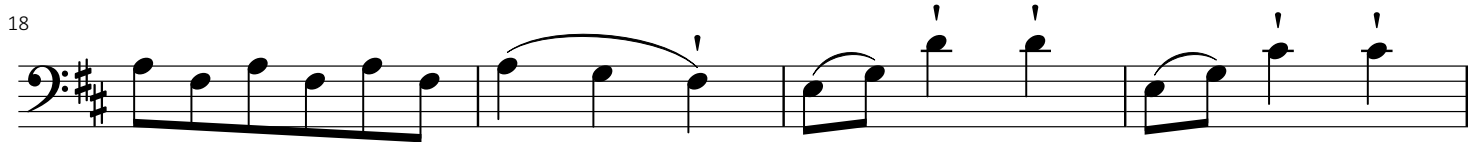
Third staff of music, starting at measure 10. The melody continues, with a key signature change to one sharp (F#) at the end of the staff.

14



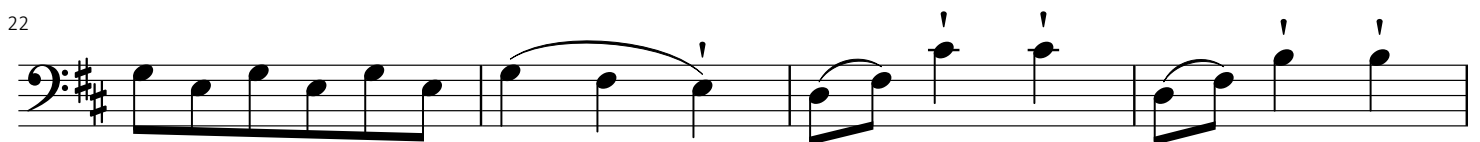
Fourth staff of music, starting at measure 14. It features a key signature change to one sharp (F#) and includes a fermata over a note.

18



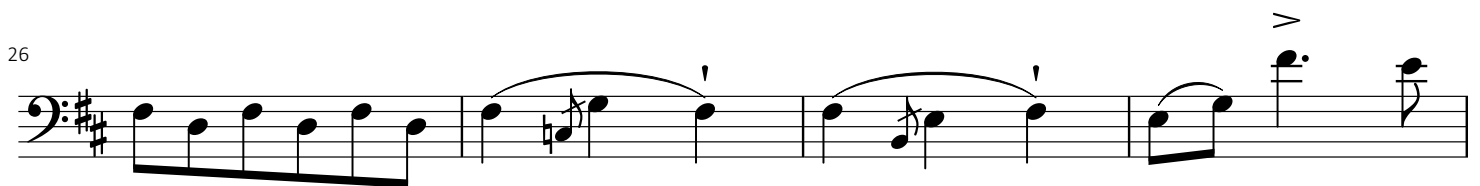
Fifth staff of music, starting at measure 18. The melody continues with consistent phrasing.

22



Sixth staff of music, starting at measure 22. The melodic line continues with similar rhythmic patterns.

26



Seventh staff of music, starting at measure 26. It includes a dynamic accent (>) over a note.

30



Eighth staff of music, starting at measure 30. It begins with a dynamic accent (>) and concludes with a double bar line and wavy lines.

Die Publicisten

Eingang

Walzer 5

Strauss

5

9

13

17

21

26

31

36

*Stay Tuned
While Our Performer
Prepares for the Finale*



We Hope You Have Enjoyed The Show.

*Now on With The Show,
This Is It!*

Die Publicisten

Eingang

Coda

Strauss

Measures 1-5 of the 'Eingang' section. The music is in bass clef, key of D major (one sharp), and 3/4 time. It features a series of eighth notes with slurs and accents, starting on G2 and moving up to D3.

Measures 6-9 of the 'Walzer' section. The music continues in bass clef, key of D major, and 3/4 time. It features a series of eighth notes with slurs and accents, starting on G2 and moving up to D3.

Measures 10-13 of the 'Walzer' section. The music continues in bass clef, key of D major, and 3/4 time. It features a series of eighth notes with slurs and accents, starting on G2 and moving up to D3.

Measures 14-17 of the 'Walzer' section. The music continues in bass clef, key of D major, and 3/4 time. It features a series of eighth notes with slurs and accents, starting on G2 and moving up to D3.

Measures 18-21 of the 'Walzer' section. The music continues in bass clef, key of D major, and 3/4 time. It features a series of eighth notes with slurs and accents, starting on G2 and moving up to D3.

Measures 22-26 of the 'Walzer' section. The music continues in bass clef, key of D major, and 3/4 time. It features a series of eighth notes with slurs and accents, starting on G2 and moving up to D3.

Measures 27-30 of the 'Walzer' section. The music continues in bass clef, key of D major, and 3/4 time. It features a series of eighth notes with slurs and accents, starting on G2 and moving up to D3.

Measures 31-35 of the 'Walzer' section. The music continues in bass clef, key of D major, and 3/4 time. It features a series of eighth notes with slurs and accents, starting on G2 and moving up to D3.

Measures 36-40 of the 'Walzer' section. The music continues in bass clef, key of D major, and 3/4 time. It features a series of eighth notes with slurs and accents, starting on G2 and moving up to D3.

Measures 41-44 of the 'Walzer' section. The music continues in bass clef, key of D major, and 3/4 time. It features a series of eighth notes with slurs and accents, starting on G2 and moving up to D3.

Measures 45-48 of the 'Walzer' section. The music continues in bass clef, key of D major, and 3/4 time. It features a series of eighth notes with slurs and accents, starting on G2 and moving up to D3.

Measures 49-52 of the 'Walzer' section. The music continues in bass clef, key of D major, and 3/4 time. It features a series of eighth notes with slurs and accents, starting on G2 and moving up to D3.

Measures 53-56 of the 'Walzer' section. The music continues in bass clef, key of D major, and 3/4 time. It features a series of eighth notes with slurs and accents, starting on G2 and moving up to D3.

Die Publicisten

Coda Continued

Strauss

53

57

62

67

72

77

82

87

92

96

100

104

Detailed description: This page contains ten staves of musical notation for a bassoon part. The key signature is G major (one sharp). The music begins at measure 53 and ends at measure 104. The notation includes various rhythmic values such as eighth, sixteenth, and quarter notes, as well as rests. There are several slurs and accents throughout the piece. The piece concludes with a final cadence in measure 104, marked with a double bar line and repeat signs.