

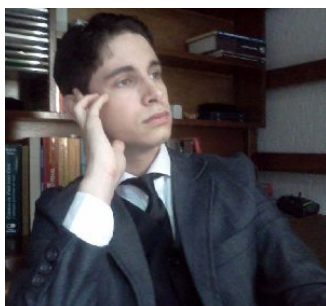


Raul Barcelo Souza

Compositeur

Brésil, São Paulo

A propos de la pièce



Titre: The hard way to get the moon
Compositeur: Souza, Raul Barcelo
Licence: Raul Souza © All rights reserved
Editeur: Souza, Raul Barcelo
Instrumentation: Piano, Violon, Violoncelle
Style: Contemporain

Raul Barcelo Souza sur [free-scores.com](http://www.free-scores.com)

http://www.free-scores.com/partitions_gratuites_raul-barcelo.htm

- Contacter l'artiste
- Commenter cette partition
- Ajouter votre interprétation MP3
- Accès partition avec ce QR Code :



Cette partition ne fait pas partie du domaine public. Merci de contacter l'artiste pour toute utilisation hors du cadre privé.

The Hard Way to Get The Moon

Souza, R.B.

Moderate ♩ = 120

1

Piano

Piano

Cello

Strings

5

Piano

Piano

Cello

Strings

9

Piano

Piano

Cello

Strings

13

Piano

Piano

Cello

Strings

This system contains measures 13 through 16. The top staff (Piano) features a melodic line with a key signature of one sharp (F#) and a common time signature. The second staff (Piano) provides a rhythmic accompaniment with eighth notes and rests. The Cello and Strings staves are currently empty, with measure numbers 13 and 13 written at the beginning of their respective staves.

17

Piano

Piano

Cello

Strings

This system contains measures 17 through 20. The top staff (Piano) continues the melodic line. The second staff (Piano) continues the rhythmic accompaniment. The Cello and Strings staves are empty, with measure numbers 17 and 17 written at the beginning of their respective staves.

21

Piano

Piano

Cello

Strings

This system contains measures 21 through 24. The top staff (Piano) continues the melodic line. The second staff (Piano) continues the rhythmic accompaniment. The Cello and Strings staves are empty, with measure numbers 21 and 21 written at the beginning of their respective staves.

25

Piano

25

Piano

25

Cello

25

Strings

Detailed description: This system contains measures 25 through 29. The Piano part features a melodic line with eighth and sixteenth notes, often accompanied by chords. The Cello and Strings parts are mostly silent, indicated by a horizontal bar across the staves.

30

Piano

30

Piano

30

Cello

30

Strings

Detailed description: This system contains measures 30 through 34. The Piano part continues with its melodic line. The Cello part has some activity, with notes appearing in measures 32, 33, and 34. The Strings part remains silent.

34

Piano

35

Piano

35

Cello

35

Strings

Detailed description: This system contains measures 35 through 39. The Piano part continues with its melodic line. The Cello part has some activity, with notes appearing in measures 36, 37, 38, and 39. The Strings part remains silent.

39

Piano

Piano

Cello

Strings

41

Piano

43

Piano

Cello

43

Strings

45

Piano

47

Piano

Cello

47

Strings

51

Piano

Piano

Cello

Strings

54

Piano

Piano

Cello

Strings

58

Piano

Piano

Cello

Strings

63

Piano

63

Piano

63

Cello

63

Strings

69

Piano

69

Piano

69

Cello

69

Strings

75

Piano

75

Piano

75

Cello

75

Strings

79

Piano

Piano

Cello

79

79

79

84

Piano

Piano

Cello

84

84

84

90

Piano

Piano

Cello

90

90

90

96

Piano

Piano

Cello

96

96

96

102 **p**

Piano

102

Piano

102

Cello

102

Strings

The image shows a musical score for three instruments: Piano, Cello, and Strings. The score is written on three staves. The first staff is for the Piano, the second for the Cello, and the third for the Strings. The measure number 102 is written at the beginning of each staff. The Piano part has a dynamic marking of **p** (piano) above the first measure. The Cello part has a dynamic marking of **p** above the first measure. The Strings part has a dynamic marking of **p** above the first measure. The score is written in a standard musical notation style with a treble clef for the Piano and Cello, and a bass clef for the Strings. The notes are mostly quarter notes and eighth notes, with some rests. The Piano part has a few notes in the first measure, followed by a rest. The Cello part has a few notes in the first measure, followed by a rest. The Strings part has a few notes in the first measure, followed by a rest.