



Richard Kearns

Irlande, Ballybofey

Ma Vlast Smetana, Bedrich

A propos de l'artiste

Due to loss of use of hands I will be unable to transpose, arrange or otherwise modify my music in here. Further compositions will be very very slow in appearing here.....Thanks for all the support.

Teachers and students may use my music and arrangements to study and practice without further adieu.....All public performances must seek permission first.

THANKS FOR THE DONATIONS.

They keep me going.

Page artiste : https://www.free-scores.com/partitions_gratuites_guiriel.htm

A propos de la pièce



Titre : Ma Vlast
Compositeur : Smetana, Bedrich
Arrangeur : Kearns, Richard
Droit d'auteur : Richard Kearns © All rights reserved
Editeur : Kearns, Richard
Instrumentation : Quintette à vent : Flûte, Clarinette, Hautbois, Cor, Basson
Style : Classique

Richard Kearns sur [free-scores.com](https://www.free-scores.com)



Cette partition ne fait pas partie du domaine public. Merci de contacter l'artiste pour toute utilisation hors du cadre privé.



- écouter l'audio
- partager votre interprétation
- commenter la partition
- contacter l'artiste

Ma Vlast

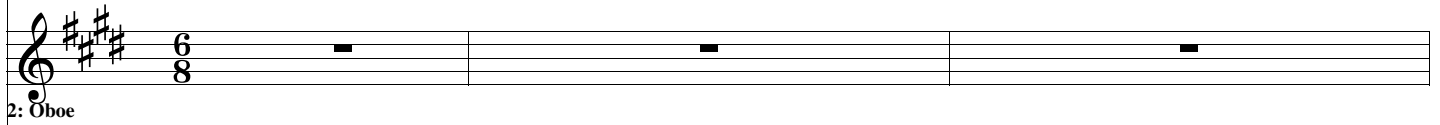
Bedrich Smetana
Arranged by Richard Kearns © 2010

1



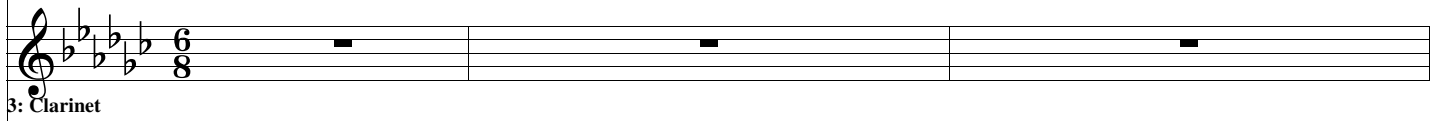
1: Flute

The first staff is for Flute 1. It begins with a treble clef, a key signature of three sharps (F#, C#, G#), and a 6/8 time signature. The first measure contains a whole rest. The second and third measures each contain a sixteenth-note triplet, with a fermata over the final note of each triplet.



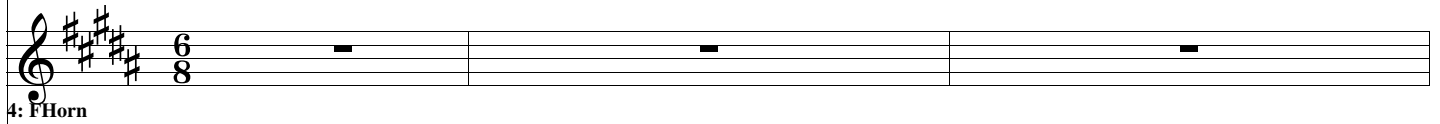
2: Oboe

The second staff is for Oboe 2. It has a treble clef, a key signature of three sharps, and a 6/8 time signature. It contains three measures, each with a whole rest.



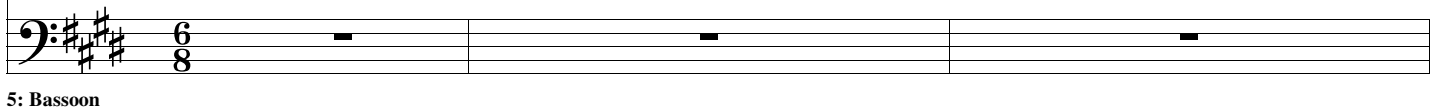
3: Clarinet

The third staff is for Clarinet. It has a treble clef, a key signature of three flats (Bb, Eb, Ab), and a 6/8 time signature. It contains three measures, each with a whole rest.



4: F Horn

The fourth staff is for F Horn. It has a treble clef, a key signature of three sharps, and a 6/8 time signature. It contains three measures, each with a whole rest.



5: Bassoon

The fifth staff is for Bassoon. It has a bass clef, a key signature of three sharps, and a 6/8 time signature. It contains three measures, each with a whole rest.

4

1: Flute

2: Oboe

3: Clarinet

4: F Horn

5: Bassoon

6

1: Flute

2: Oboe

3: Clarinet

4: F Horn

5: Bassoon

8

1: Flute

2: Oboe

3: Clarinet

4: F Horn

5: Bassoon

10

1: Flute

2: Oboe

3: Clarinet

4: F Horn

5: Bassoon

12

1: Flute

2: Oboe

3: Clarinet

4: F Horn

5: Bassoon

14

1: Flute

2: Oboe

3: Clarinet

4: F Horn

5: Bassoon

16

1: Flute

Musical staff for Flute 1, measures 16-19. The staff is in treble clef with a key signature of three sharps (F#, C#, G#). The melody consists of eighth and quarter notes, with some beamed sixteenth notes in measures 17 and 18.

2: Oboe

Musical staff for Oboe 2, measures 16-19. The staff is in treble clef with a key signature of three sharps (F#, C#, G#). The staff contains whole rests for all four measures.

3: Clarinet

Musical staff for Clarinet 3, measures 16-19. The staff is in treble clef with a key signature of three flats (Bb, Eb, Ab). The melody consists of eighth and quarter notes, with some beamed sixteenth notes in measures 17 and 18.

4: F Horn

Musical staff for F Horn 4, measures 16-19. The staff is in treble clef with a key signature of three sharps (F#, C#, G#). The staff contains whole rests for all four measures.

5: Bassoon

Musical staff for Bassoon 5, measures 16-19. The staff is in bass clef with a key signature of three sharps (F#, C#, G#). The staff contains whole rests for all four measures.

18

1: Flute

Musical staff for Flute 1, measures 18-21. The staff is in treble clef with a key signature of three sharps (F#, C#, G#). The melody consists of eighth and quarter notes, with some beamed sixteenth notes in measures 19 and 20.

2: Oboe

Musical staff for Oboe 2, measures 18-21. The staff is in treble clef with a key signature of three sharps (F#, C#, G#). The staff contains whole rests for all four measures.

3: Clarinet

Musical staff for Clarinet 3, measures 18-21. The staff is in treble clef with a key signature of three flats (Bb, Eb, Ab). The melody consists of eighth and quarter notes, with some beamed sixteenth notes in measures 19 and 20.

4: F Horn

Musical staff for F Horn 4, measures 18-21. The staff is in treble clef with a key signature of three sharps (F#, C#, G#). The staff contains whole rests for all four measures.

5: Bassoon

Musical staff for Bassoon 5, measures 18-21. The staff is in bass clef with a key signature of three sharps (F#, C#, G#). The staff contains whole rests for all four measures.

5: Bassoon

20

1: Flute

2: Oboe

3: Clarinet

4: F Horn

5: Bassoon

22

1: Flute

2: Oboe

3: Clarinet

4: F Horn

5: Bassoon

28

1: Flute

2: Oboe

3: Clarinet

4: F Horn

5: Bassoon

30

1: Flute

2: Oboe

3: Clarinet

4: F Horn

5: Bassoon

32

1: Flute

2: Oboe

3: Clarinet

4: F Horn

5: Bassoon

34

1: Flute

2: Oboe

3: Clarinet

4: F Horn

5: Bassoon

36

1: Flute

2: Oboe

3: Clarinet

4: F Horn

5: Bassoon

38

1: Flute

2: Oboe

3: Clarinet

4: F Horn

5: Bassoon

40

1: Flute

2: Oboe

3: Clarinet

4: F Horn

5: Bassoon

42

1: Flute

2: Oboe

3: Clarinet

4: F Horn

5: Bassoon

44

1: Flute

2: Oboe

3: Clarinet

4: F Horn

5: Bassoon

46

1: Flute

2: Oboe

3: Clarinet

4: F Horn

5: Bassoon

48

1: Flute

2: Oboe

3: Clarinet

4: F Horn

5: Bassoon

50

1: Flute

2: Oboe

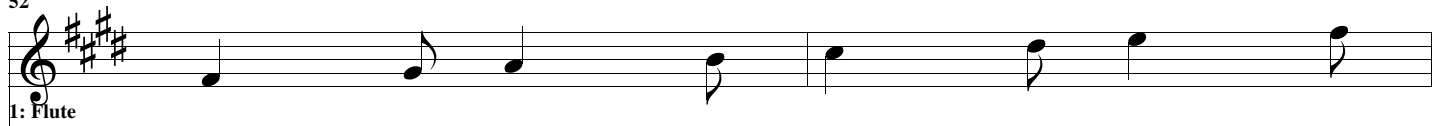
3: Clarinet

4: F Horn

5: Bassoon

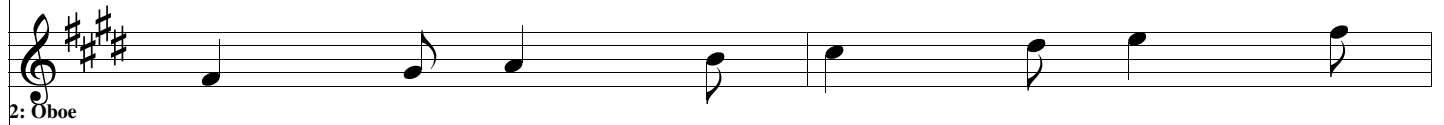
52

1: Flute



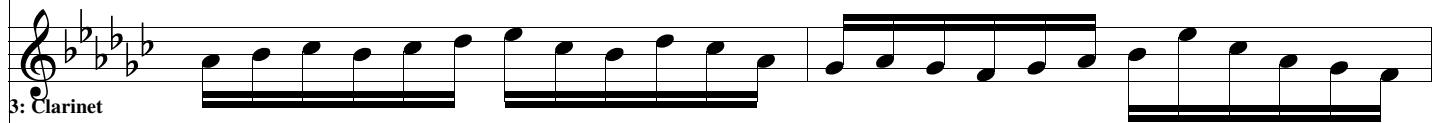
Flute part for measure 52, starting with a treble clef and a key signature of three sharps (F#, C#, G#). The melody consists of quarter notes: G5, A5, B5, A5, G5, F#5, E5, D5.

2: Oboe



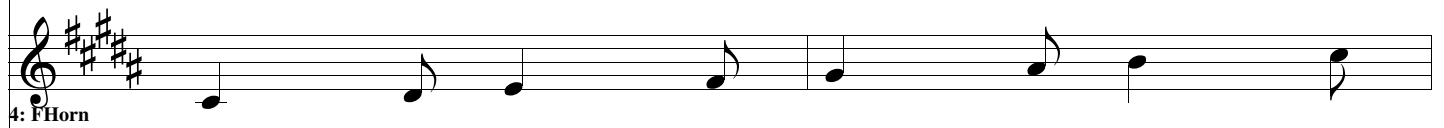
Oboe part for measure 52, starting with a treble clef and a key signature of three sharps (F#, C#, G#). The melody consists of quarter notes: G5, A5, B5, A5, G5, F#5, E5, D5.

3: Clarinet



Clarinet part for measure 52, starting with a treble clef and a key signature of three flats (Bb, Eb, Ab). The part features a continuous eighth-note pattern: Bb4, C5, D5, Eb5, F5, G5, Ab5, Bb5.

4: F Horn



F Horn part for measure 52, starting with a treble clef and a key signature of three sharps (F#, C#, G#). The melody consists of quarter notes: G5, A5, B5, A5, G5, F#5, E5, D5.

5: Bassoon



Bassoon part for measure 52, starting with a bass clef and a key signature of three sharps (F#, C#, G#). The part features a continuous eighth-note pattern: G3, A3, B3, C4, D4, E4, F4, G4.

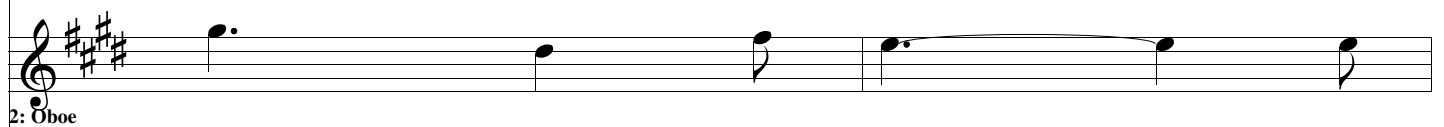
54

1: Flute



Flute part for measure 54, starting with a treble clef and a key signature of three sharps (F#, C#, G#). The melody consists of quarter notes: G5, A5, B5, A5, G5, F#5, E5, D5.

2: Oboe



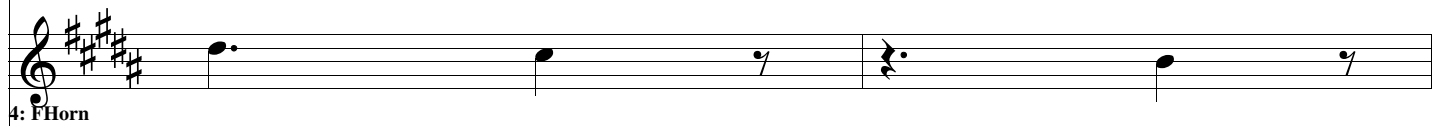
Oboe part for measure 54, starting with a treble clef and a key signature of three sharps (F#, C#, G#). The melody consists of quarter notes: G5, A5, B5, A5, G5, F#5, E5, D5.

3: Clarinet



Clarinet part for measure 54, starting with a treble clef and a key signature of three flats (Bb, Eb, Ab). The part features a continuous eighth-note pattern: Bb4, C5, D5, Eb5, F5, G5, Ab5, Bb5.

4: F Horn



F Horn part for measure 54, starting with a treble clef and a key signature of three sharps (F#, C#, G#). The melody consists of quarter notes: G5, A5, B5, A5, G5, F#5, E5, D5.

5: Bassoon



Bassoon part for measure 54, starting with a bass clef and a key signature of three sharps (F#, C#, G#). The part features a continuous eighth-note pattern: G3, A3, B3, C4, D4, E4, F4, G4.

56

1: Flute

Musical staff for Flute 1, measures 56-57. The staff is in treble clef with a key signature of three sharps (F#, C#, G#). The melody consists of a dotted quarter note, a quarter note, an eighth note, a quarter note, a quarter note, a quarter note, and a quarter note.

2: Oboe

Musical staff for Oboe 2, measures 56-57. The staff is in treble clef with a key signature of three sharps (F#, C#, G#). The melody consists of a dotted quarter note, a quarter note, an eighth note, a quarter note, a quarter note, a quarter note, and a quarter note.

3: Clarinet

Musical staff for Clarinet 3, measures 56-57. The staff is in treble clef with a key signature of two flats (Bb, Eb). The melody consists of a series of eighth and sixteenth notes.

4: F Horn

Musical staff for F Horn 4, measures 56-57. The staff is in treble clef with a key signature of three sharps (F#, C#, G#). The melody consists of a dotted quarter note, a quarter note, an eighth note, a quarter note, a quarter note, a quarter note, and a quarter note.

5: Bassoon

Musical staff for Bassoon 5, measures 56-57. The staff is in bass clef with a key signature of three sharps (F#, C#, G#). The melody consists of a series of eighth and sixteenth notes.

58

1: Flute

Musical staff for Flute 1, measures 58-59. The staff is in treble clef with a key signature of three sharps (F#, C#, G#). The melody consists of a dotted quarter note, a quarter note, an eighth note, a quarter note, a quarter note, a quarter note, and a quarter note.

2: Oboe

Musical staff for Oboe 2, measures 58-59. The staff is in treble clef with a key signature of three sharps (F#, C#, G#). The melody consists of a dotted quarter note, a quarter note, an eighth note, a quarter note, a quarter note, a quarter note, and a quarter note.

3: Clarinet

Musical staff for Clarinet 3, measures 58-59. The staff is in treble clef with a key signature of two flats (Bb, Eb). The melody consists of a series of eighth and sixteenth notes.

4: F Horn

Musical staff for F Horn 4, measures 58-59. The staff is in treble clef with a key signature of three sharps (F#, C#, G#). The melody consists of a dotted quarter note, a quarter note, an eighth note, a quarter note, a quarter note, a quarter note, and a quarter note.

5: Bassoon

Musical staff for Bassoon 5, measures 58-59. The staff is in bass clef with a key signature of three sharps (F#, C#, G#). The melody consists of a series of eighth and sixteenth notes.

60

Musical staff for Flute 1, measures 60-61. The staff is in treble clef with a key signature of three sharps (F#, C#, G#). Measure 60 contains a dotted quarter note followed by an eighth rest, then an eighth note. Measure 61 contains a dotted half note.

1: Flute

Musical staff for Oboe 2, measures 60-61. The staff is in treble clef with a key signature of three sharps (F#, C#, G#). Measure 60 contains a dotted quarter note. Measure 61 contains a dotted half note.

2: Oboe

Musical staff for Clarinet 3, measures 60-61. The staff is in treble clef with a key signature of three flats (Bb, Eb, Ab). Measure 60 contains a dotted quarter note. Measure 61 contains a dotted half note.

3: Clarinet

Musical staff for F Horn 4, measures 60-61. The staff is in treble clef with a key signature of three sharps (F#, C#, G#). Measure 60 contains a dotted quarter note. Measure 61 contains a dotted half note.

4: F Horn

Musical staff for Bassoon 5, measures 60-61. The staff is in bass clef with a key signature of three sharps (F#, C#, G#). Measure 60 contains a series of eighth notes: G2, A2, B2, C3, D3, E3, F3, G3. Measure 61 contains a series of eighth notes: G3, A3, B3, C4, D4, E4, F4, G4.

5: Bassoon

62

Musical staff for Flute 1, measures 62-63. The staff is in treble clef with a key signature of three sharps (F#, C#, G#). Measure 62 contains a whole rest. Measure 63 contains a dotted quarter note followed by an eighth rest, then an eighth note.

1: Flute

Musical staff for Oboe 2, measures 62-63. The staff is in treble clef with a key signature of three sharps (F#, C#, G#). Measure 62 contains a whole rest. Measure 63 contains a dotted quarter note followed by an eighth rest, then an eighth note.

2: Oboe

Musical staff for Clarinet 3, measures 62-63. The staff is in treble clef with a key signature of three flats (Bb, Eb, Ab). Measure 62 contains a whole rest. Measure 63 contains a whole rest.

3: Clarinet

Musical staff for F Horn 4, measures 62-63. The staff is in treble clef with a key signature of three sharps (F#, C#, G#). Measure 62 contains a whole rest. Measure 63 contains a dotted quarter note followed by an eighth rest, then an eighth note.

4: F Horn

Musical staff for Bassoon 5, measures 62-63. The staff is in bass clef with a key signature of three sharps (F#, C#, G#). Measure 62 contains a series of eighth notes: G2, A2, B2, C3, D3, E3, F3, G3. Measure 63 contains a series of eighth notes: G3, A3, B3, C4, D4, E4, F4, G4.

5: Bassoon

64

Musical staff for Flute 1, measures 64-65. The staff is in treble clef with a key signature of three sharps (F#, C#, G#). The melody consists of quarter notes and eighth notes.

1: Flute

Musical staff for Oboe 2, measures 64-65. The staff is in treble clef with a key signature of three sharps (F#, C#, G#). The melody is identical to the Flute 1 part.

2: Oboe

Musical staff for Clarinet 3, measures 64-65. The staff is in treble clef with a key signature of three flats (Bb, Eb, Ab). The part features a rhythmic pattern of eighth notes with a 'z' symbol indicating a grace note or breath mark.

3: Clarinet

Musical staff for F Horn 4, measures 64-65. The staff is in treble clef with a key signature of three sharps (F#, C#, G#). The melody is identical to the Flute 1 part.

4: F Horn

Musical staff for Bassoon 5, measures 64-65. The staff is in bass clef with a key signature of three sharps (F#, C#, G#). The part features a rhythmic pattern of eighth notes.

5: Bassoon

66

Musical staff for Flute 1, measures 66-67. The staff is in treble clef with a key signature of three sharps (F#, C#, G#). The melody consists of quarter notes and eighth notes.

1: Flute

Musical staff for Oboe 2, measures 66-67. The staff is in treble clef with a key signature of three sharps (F#, C#, G#). The melody is identical to the Flute 1 part.

2: Oboe

Musical staff for Clarinet 3, measures 66-67. The staff is in treble clef with a key signature of three flats (Bb, Eb, Ab). The part features a rhythmic pattern of eighth notes with a 'z' symbol.

3: Clarinet

Musical staff for F Horn 4, measures 66-67. The staff is in treble clef with a key signature of three sharps (F#, C#, G#). The melody is identical to the Flute 1 part.

4: F Horn

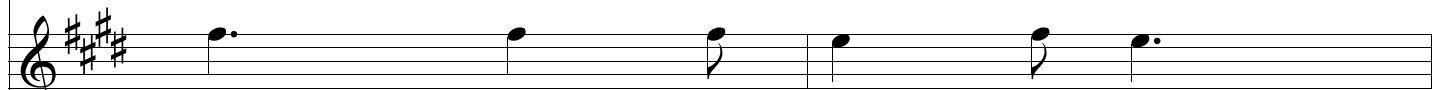
Musical staff for Bassoon 5, measures 66-67. The staff is in bass clef with a key signature of three sharps (F#, C#, G#). The part features a rhythmic pattern of eighth notes.

5: Bassoon

68



1: Flute



2: Oboe



3: Clarinet



4: FHorn



5: Bassoon

70



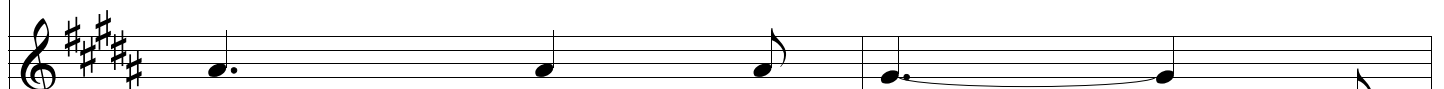
1: Flute



2: Oboe



3: Clarinet



4: FHorn



5: Bassoon

72

1: Flute

2: Oboe

3: Clarinet

4: FHorn

5: Bassoon

74

1: Flute

2: Oboe

3: Clarinet

4: FHorn

5: Bassoon

76

1: Flute

Musical staff for Flute 1, measures 76-77. The staff is in treble clef with a key signature of three sharps (F#, C#, G#). The melody consists of quarter notes: G4, A4, B4, C5, B4, A4, G4.

2: Oboe

Musical staff for Oboe 2, measures 76-77. The staff is in treble clef with a key signature of three sharps (F#, C#, G#). The melody consists of quarter notes: G4, A4, B4, C5, B4, A4, G4.

3: Clarinet

Musical staff for Clarinet 3, measures 76-77. The staff is in treble clef with a key signature of three flats (Bb, Eb, Ab). The melody consists of eighth notes: G4, A4, B4, C5, B4, A4, G4, followed by a quarter rest, eighth notes G4, A4, B4, C5, B4, A4, G4, followed by a quarter rest, eighth notes G4, A4, B4, C5, B4, A4, G4.

4: F Horn

Musical staff for F Horn 4, measures 76-77. The staff is in treble clef with a key signature of three sharps (F#, C#, G#). The melody consists of quarter notes: G4, A4, B4, C5, B4, A4, G4.

5: Bassoon

Musical staff for Bassoon 5, measures 76-77. The staff is in bass clef with a key signature of three sharps (F#, C#, G#). The melody consists of eighth notes: G3, A3, B3, C4, B3, A3, G3, followed by a quarter rest, eighth notes G3, A3, B3, C4, B3, A3, G3, followed by a quarter rest, eighth notes G3, A3, B3, C4, B3, A3, G3.

78

1: Flute

Musical staff for Flute 1, measures 78-79. The staff is in treble clef with a key signature of three sharps (F#, C#, G#). The melody consists of a dotted quarter note G4, followed by quarter notes A4, B4, C5, B4, A4, G4.

2: Oboe

Musical staff for Oboe 2, measures 78-79. The staff is in treble clef with a key signature of three sharps (F#, C#, G#). The melody consists of a dotted quarter note G4, followed by quarter notes A4, B4, C5, B4, A4, G4.

3: Clarinet

Musical staff for Clarinet 3, measures 78-79. The staff is in treble clef with a key signature of three flats (Bb, Eb, Ab). The melody consists of eighth notes: G4, A4, B4, C5, B4, A4, G4, followed by a quarter rest, eighth notes G4, A4, B4, C5, B4, A4, G4, followed by a quarter rest, eighth notes G4, A4, B4, C5, B4, A4, G4.

4: F Horn

Musical staff for F Horn 4, measures 78-79. The staff is in treble clef with a key signature of three sharps (F#, C#, G#). The melody consists of a dotted quarter note G4, followed by quarter notes A4, B4, C5, B4, A4, G4.

5: Bassoon

Musical staff for Bassoon 5, measures 78-79. The staff is in bass clef with a key signature of three sharps (F#, C#, G#). The melody consists of eighth notes: G3, A3, B3, C4, B3, A3, G3, followed by a quarter rest, eighth notes G3, A3, B3, C4, B3, A3, G3, followed by a quarter rest, eighth notes G3, A3, B3, C4, B3, A3, G3.

80

1: Flute

2: Oboe

3: Clarinet

4: F Horn

5: Bassoon

82

1: Flute

2: Oboe

3: Clarinet

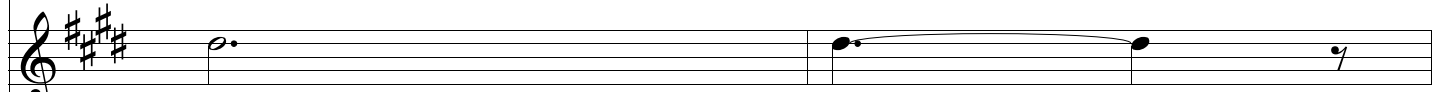
4: F Horn

5: Bassoon

84



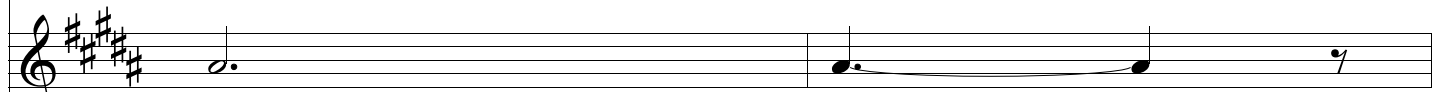
1: Flute



2: Oboe



3: Clarinet

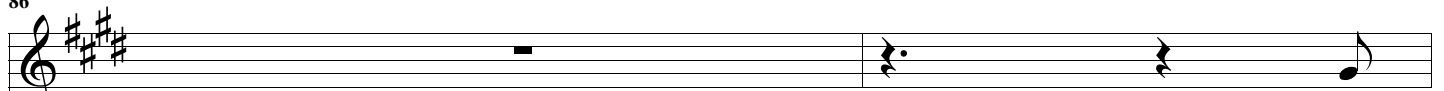


4: FHorn

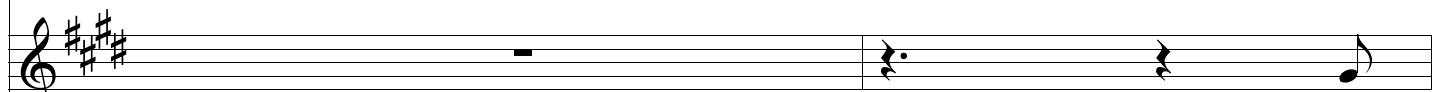


5: Bassoon

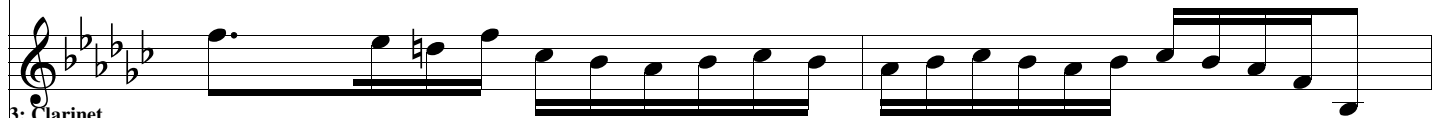
86



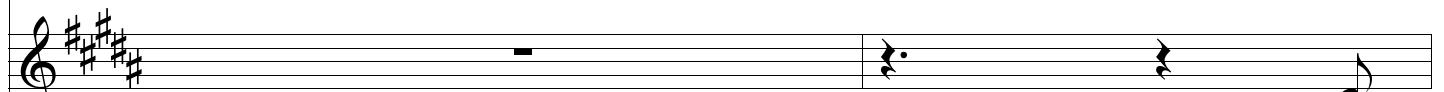
1: Flute



2: Oboe



3: Clarinet



4: FHorn



5: Bassoon

88

1: Flute

2: Oboe

3: Clarinet

4: F Horn

5: Bassoon

90

1: Flute

2: Oboe

3: Clarinet

4: F Horn

5: Bassoon

92

1: Flute

Musical staff for Flute 1, measures 92-93. The staff is in treble clef with a key signature of three sharps (F#, C#, G#). The melody consists of quarter notes: G5, A5, B5, C6, B5, A5, G5.

1: Flute

2: Oboe

Musical staff for Oboe 2, measures 92-93. The staff is in treble clef with a key signature of three sharps (F#, C#, G#). The melody consists of quarter notes: G5, A5, B5, C6, B5, A5, G5.

2: Oboe

3: Clarinet

Musical staff for Clarinet 3, measures 92-93. The staff is in treble clef with a key signature of three flats (Bb, Eb, Ab). The melody consists of quarter notes: Bb4, Ab4, Gb4, Fb4, Gb4, Ab4, Bb4.

3: Clarinet

4: F Horn

Musical staff for F Horn 4, measures 92-93. The staff is in treble clef with a key signature of three sharps (F#, C#, G#). The melody consists of quarter notes: G5, A5, B5, C6, B5, A5, G5.

4: F Horn

5: Bassoon

Musical staff for Bassoon 5, measures 92-93. The staff is in bass clef with a key signature of three sharps (F#, C#, G#). The melody consists of eighth notes: G4, A4, B4, C5, B4, A4, G4.

5: Bassoon

94

1: Flute

Musical staff for Flute 1, measures 94-95. The staff is in treble clef with a key signature of three sharps (F#, C#, G#). The melody consists of quarter notes: G5, A5, B5, C6, B5, A5, G5.

1: Flute

2: Oboe

Musical staff for Oboe 2, measures 94-95. The staff is in treble clef with a key signature of three sharps (F#, C#, G#). The melody consists of quarter notes: G5, A5, B5, C6, B5, A5, G5.

2: Oboe

3: Clarinet

Musical staff for Clarinet 3, measures 94-95. The staff is in treble clef with a key signature of three flats (Bb, Eb, Ab). The melody consists of quarter notes: Bb4, Ab4, Gb4, Fb4, Gb4, Ab4, Bb4.

3: Clarinet

4: F Horn

Musical staff for F Horn 4, measures 94-95. The staff is in treble clef with a key signature of three sharps (F#, C#, G#). The melody consists of quarter notes: G5, A5, B5, C6, B5, A5, G5.

4: F Horn

5: Bassoon

Musical staff for Bassoon 5, measures 94-95. The staff is in bass clef with a key signature of three sharps (F#, C#, G#). The melody consists of eighth notes: G4, A4, B4, C5, B4, A4, G4.

5: Bassoon