



# Julius Schmidt

États-Unis, Cherry Hill

## Violin Fantasy No 1 in A Minor

### A propos de l'artiste

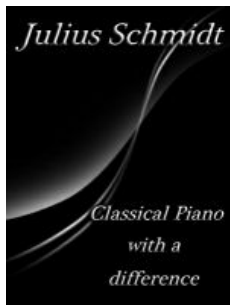
Julius Schmidt was born in 1975 in the Chicago area and began playing piano at the age of three, violin at the age of seven, viola at the age of nine, and the clarinet at the age of ten. He has played violin, viola and clarinet in many ensembles, and has appeared in numerous concerts as a pianist, violinist and clarinetist. Nonetheless, it is at the piano where he now spends the vast majority of his time and efforts.

Julius Schmidt is a pianist with a unique, emotional sound which encompasses the depth and expressive capabilities of the piano. His playing embraces a romantic sound, and is infused with emotion sorely lacking amongst many performances today.

Julius Schmidt's classical piano improvisations are true classical improvisations. They are all played spontaneously at the piano with no preparation beforehand. The various sets of improvisations vary from each other. Some are powerful, others slow and serene, some are fast, but all of them a... (la suite en ligne)

**Page artiste :** [https://www.free-scores.com/partitions\\_gratuites\\_julius-schmidt.htm](https://www.free-scores.com/partitions_gratuites_julius-schmidt.htm)

### A propos de la pièce



**Titre :** Violin Fantasy No 1 in A Minor

**Compositeur :** Schmidt, Julius

**Droit d'auteur :** Copyright © Julius B Schmidt

**Instrumentation :** Violon et Piano

**Style :** Classique

### Julius Schmidt sur [free-scores.com](https://www.free-scores.com)



Cette partition ne fait pas partie du domaine public. Merci de contacter l'artiste pour toute utilisation hors du cadre privé.

**Interdiction de diffusion sur d'autres sites Web.**



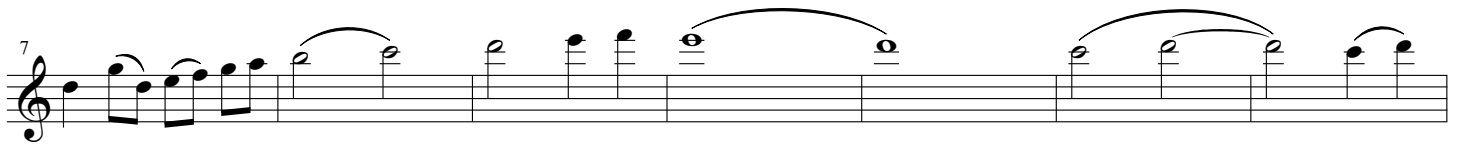
- écouter l'audio
- partager votre interprétation
- commenter la partition
- contacter l'artiste

# Violin Fantasy in A Minor

Violin Part

Julius B Schmidt

$\text{♩} = 80$

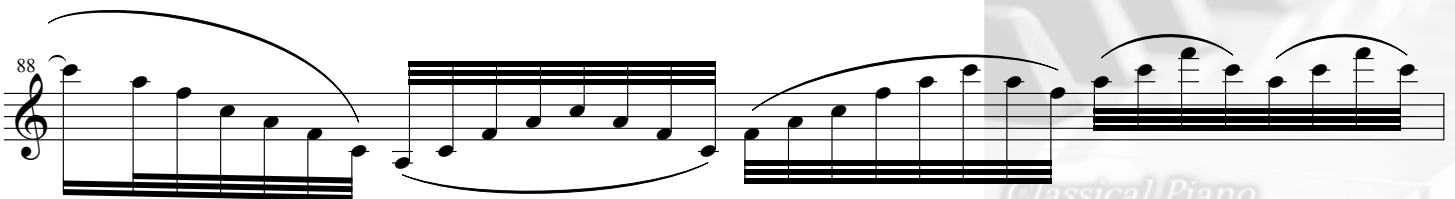
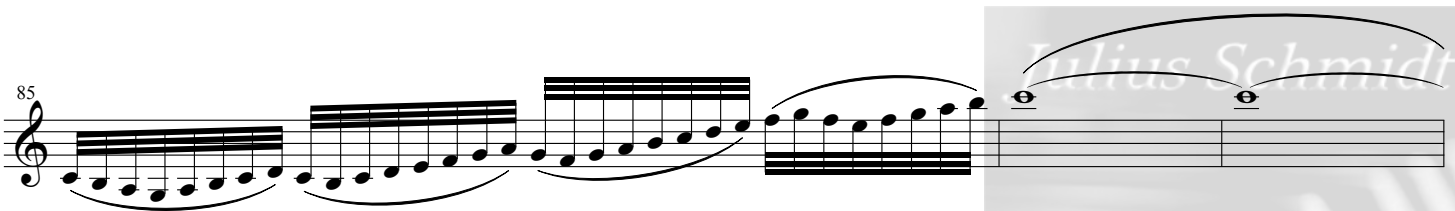
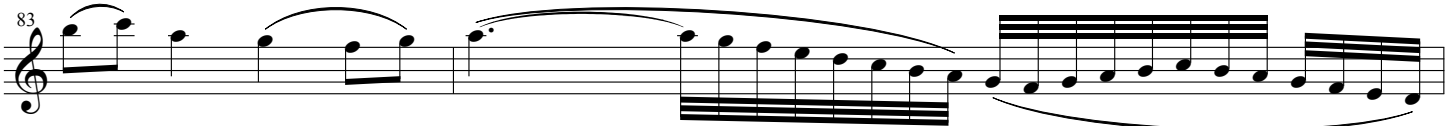
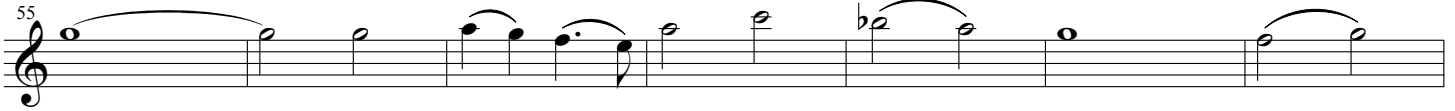


Copyright: Julius B Schmidt

© June 2002 Julius B Schmidt

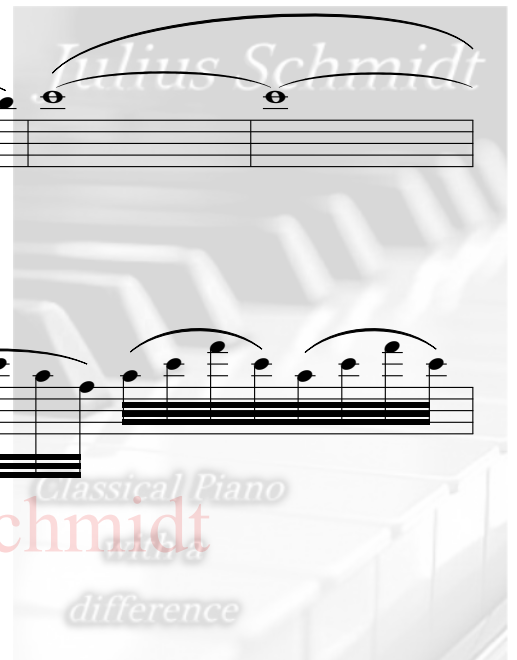


Violin Fantasy in A Minor - Violin



Copyright: Julius B Schmidt

- 2 -  
© June 2002 Julius B Schmidt



Violin Fantasy in A Minor - Violin

Musical score for Violin Fantasy in A Minor - Violin, measures 89-100. The score is written in treble clef and consists of three staves. The first staff (measures 89-92) features a complex melodic line with many sixteenth notes and slurs. The second staff (measures 93-99) shows a more melodic and lyrical passage with slurs and accents. The third staff (measures 100) concludes with a final melodic phrase and a double bar line.

Copyright: Julius B Schmidt

- 3 -  
© June 2002 Julius B Schmidt

Downloaded for free.  
free-scores.com



# Violin Fantasy in A Minor

Piano Part

Julius B Schmidt

$\text{♩} = 80$

Violin

Piano

*ped.* \* *ped.* \* *ped.* \* *ped.* \* *ped.* \* *ped.* \* *ped.* \* *ped.* \*

Vln.

Pno.

*ped.* \* *ped.* \* *ped.* \* *ped.* \* *ped.* \* *ped.* \* *ped.* \* *ped.* \* *ped.* \* *ped.* \* *ped.* \* *ped.* \*

Vln.

Pno.


*ped.* \* *ped.* \* *ped.* \* *ped.* \* *ped.* \* *ped.* \* *ped.* \* *ped.* \*

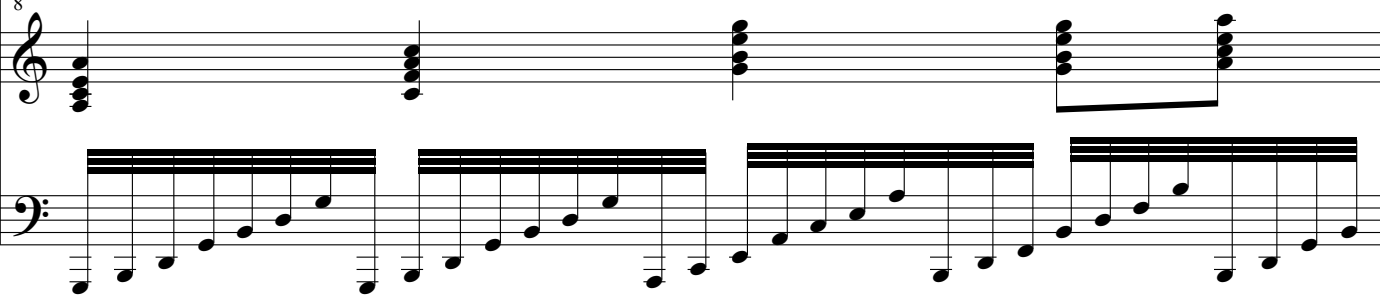
Copyright: Julius B Schmidt

© June 2002 Julius B Schmidt

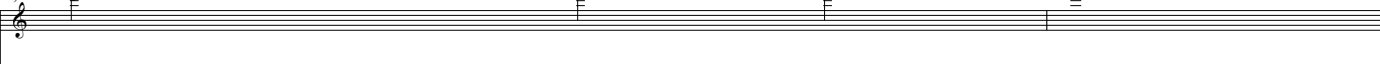



Violin Fantasy in A Minor - Piano

Vln. 

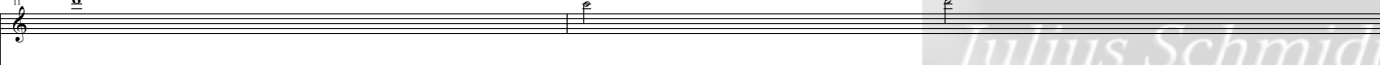
Pno. 

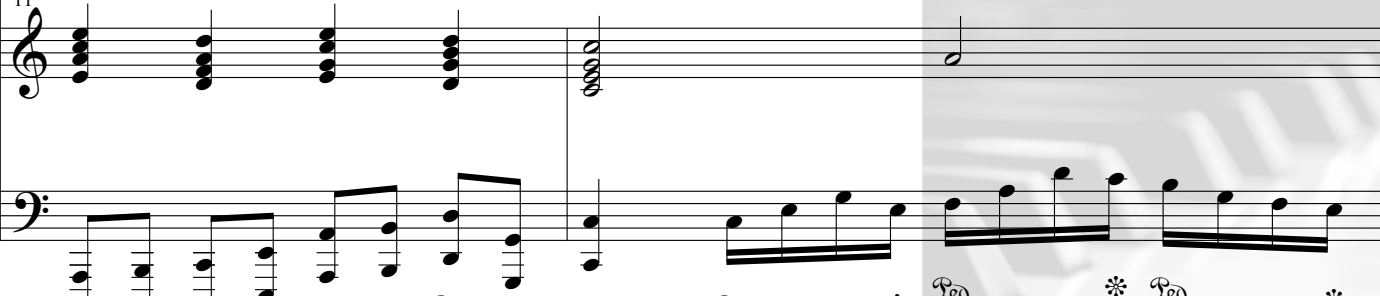
8 *Ped.* \* *Ped.* \* *Ped.* \* *Ped.* \* *Ped.* \*

Vln. 

Pno. 

9 *Ped.* \* *Ped.* \* *Ped.* \* *Ped.* \* *Ped.* \* *Ped.* \* *Ped.* \* *Ped.* \* *Ped.* \*

Vln. 

Pno. 

11 *Ped.* \* *Ped.* \* *Ped.* \* *Ped.* \* *Ped.* \* *Ped.* \* *Ped.* \* *Ped.* \* *Ped.* \*

Copyright: Julius B Schmidt

© June 2002 Julius B Schmidt



Violin Fantasy in A Minor - Piano

Vln. 13

Pno. 13

Ped. \*

Ped. \*

Ped. \*

Ped. \*

Ped. \*

Ped. \*

Ped. \*

Ped. \*

Detailed description: This system shows measures 13 and 14. The violin part (Vln.) has a single note on the first staff with a fermata. The piano part (Pno.) has two staves. The right hand has a single note on the first staff with a fermata. The left hand has a sequence of eighth notes on the second staff. Pedal markings 'Ped.' and asterisks are placed below the piano part.

Vln. 14

Pno. 14

Ped. \*

Ped. \*

Ped. \*

Ped. \*

Ped. \*

Ped. \*

Ped. \*

Ped. \*

Detailed description: This system shows measures 15 and 16. The violin part (Vln.) has a single note on the first staff with a fermata. The piano part (Pno.) has two staves. The right hand has a sequence of eighth notes on the first staff. The left hand has a sequence of eighth notes on the second staff. Pedal markings 'Ped.' and asterisks are placed below the piano part.

Vln. 15

Pno. 15

Ped. \*

Ped. \*

Ped. \*

Ped. \*

Ped. \*

Ped. \*

Ped. \*

Ped. \*

Detailed description: This system shows measures 17 and 18. The violin part (Vln.) has a single note on the first staff with a fermata. The piano part (Pno.) has two staves. The right hand has a sequence of eighth notes on the first staff. The left hand has a sequence of eighth notes on the second staff. Pedal markings 'Ped.' and asterisks are placed below the piano part.



Copyright: Julius B Schmidt

- 3 -  
© June 2002 Julius B Schmidt

Violin Fantasy in A Minor - Piano

Vln. 16

Pno. 16

Red. \* Red. \* Red. \* Red. \* Red. \*

Detailed description: This system covers measures 16 to 18. The Violin part (Vln.) has a whole rest in measure 16 and a half note in measure 17. The Piano part (Pno.) features a complex bass line with triplets and sixteenth notes. Pedal markings are indicated by 'Red.' and asterisks below the staff.

Vln. 17

Pno. 17

Red. \* Red. \* Red. \* Red. \*

Detailed description: This system covers measures 19 to 21. The Violin part (Vln.) has a long note in measure 19 and a half note in measure 20. The Piano part (Pno.) continues with intricate bass line patterns. Pedal markings are indicated by 'Red.' and asterisks below the staff.

Vln. 18

Pno. 18

Red. \* Red. \* Red. \* Red. \* Red. \*

Detailed description: This system covers measures 22 to 24. The Violin part (Vln.) has a long note in measure 22 and a half note in measure 23. The Piano part (Pno.) features a complex bass line with triplets and sixteenth notes. Pedal markings are indicated by 'Red.' and asterisks below the staff.



Copyright: Julius B Schmidt

© June 2002 Julius B Schmidt



Violin Fantasy in A Minor - Piano

Vln. <sup>19</sup>

Pno. <sup>19</sup>

Ped. \* Ped. \* Ped. \* Ped. \* Ped. \* Ped.

Vln. <sup>20</sup>

Pno. <sup>20</sup>

\* Ped. \* Ped. \* Ped. \* Ped. \* Ped. \*

Vln. <sup>21</sup>

Pno. <sup>21</sup>

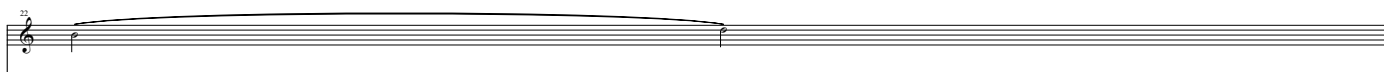
Ped. \* Ped. \* Ped. \* Ped. \*


Copyright: Julius B Schmidt

- 5 -  
© June 2002 Julius B Schmidt



Violin Fantasy in A Minor - Piano

Vln. 


Pno. 


\* Ped. \* Ped. \* Ped. \* Ped. \* Ped. \* Ped. \* Ped. \* Ped. \*

Vln. 

Pno. 

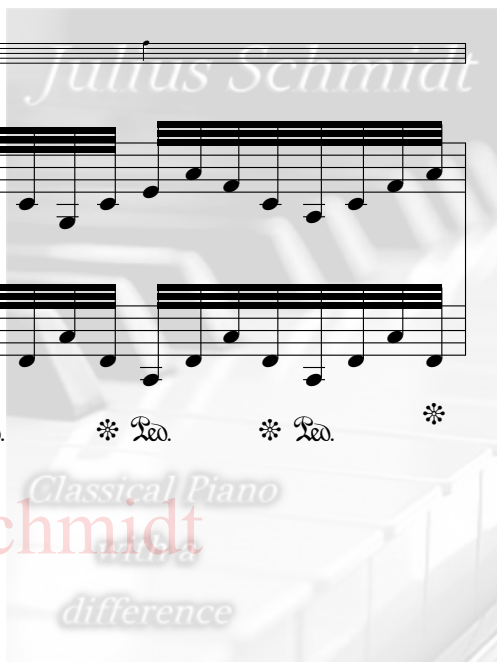
Ped. \* Ped. \* Ped. \* Ped. \* Ped. \* Ped. \* Ped. \* Ped. \* Ped. \*

Vln. 


Pno. 

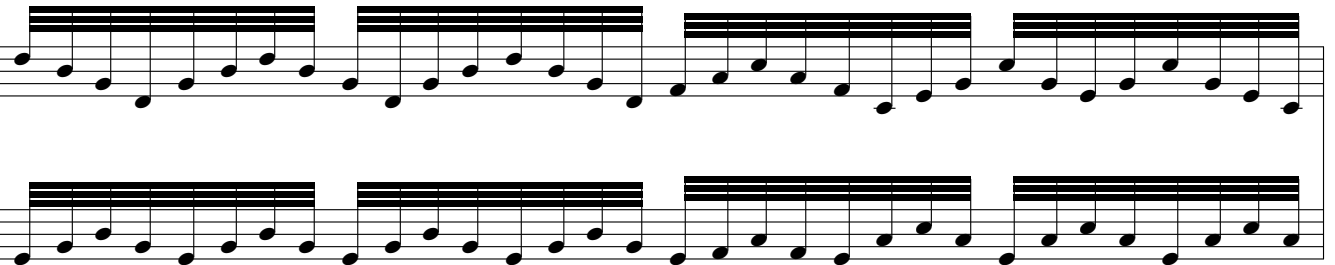
Ped. \* Ped. \* Ped. \* Ped. \* Ped. \* Ped. \* Ped. \* Ped. \*

Copyright: Julius B Schmidt

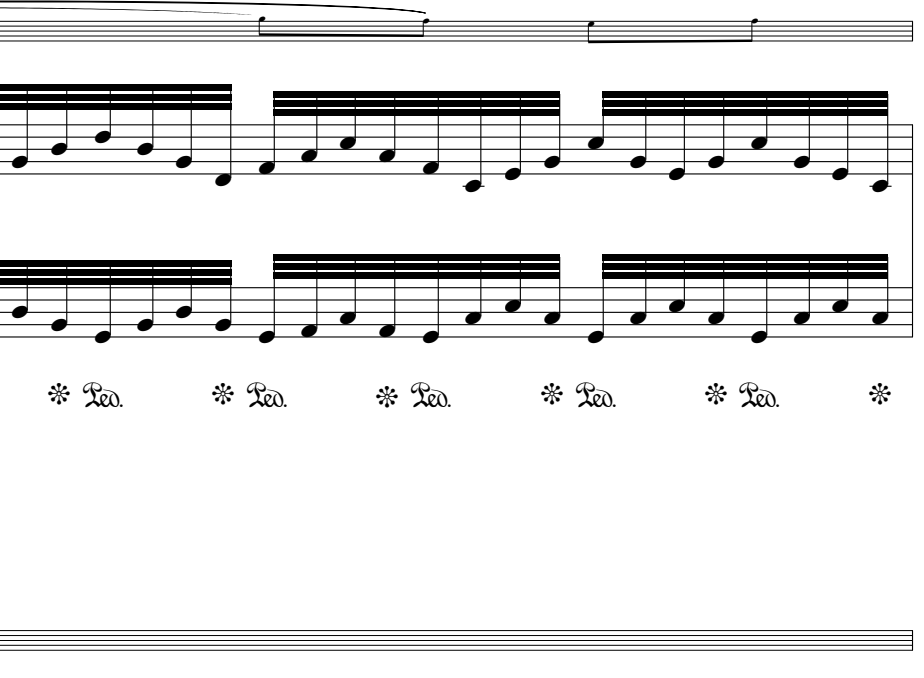



Violin Fantasy in A Minor - Piano

Vln. 


Pno. 

Reo. \* Reo. \* Reo. \* Reo. \* Reo. \* Reo. \* Reo. \* Reo. \*

Vln. 

Pno. 

Reo. \* Reo. \* Reo. \* Reo. \* Reo. \* Reo. \* Reo.

Vln. 

Pno. 

Reo. \* Reo. \* Reo. \* Reo. \* Reo. \* Reo. \* Reo. \* Reo. \* Reo. \*

Copyright: Julius B Schmidt

© June 2002 Julius B Schmidt



Violin Fantasy in A Minor - Piano

Vln. 28

Pno.

Ped. \* Ped. \* Ped. \* Ped. \* Ped. \* Ped. \* Ped. \* Ped. \*

Vln. 29

Pno.

Ped. \* Ped. \* Ped. \* Ped. \* Ped. \* Ped. \* Ped. \* Ped. \*

Vln. 30

Pno.


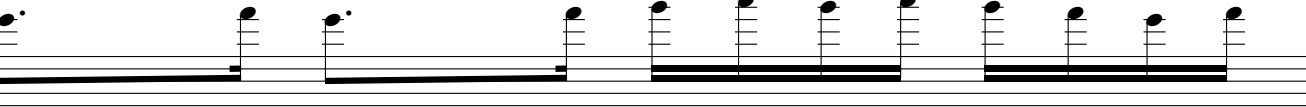

Ped. \* Ped. \* Ped. \* Ped. \* Ped. \* Ped. \* Ped. \*

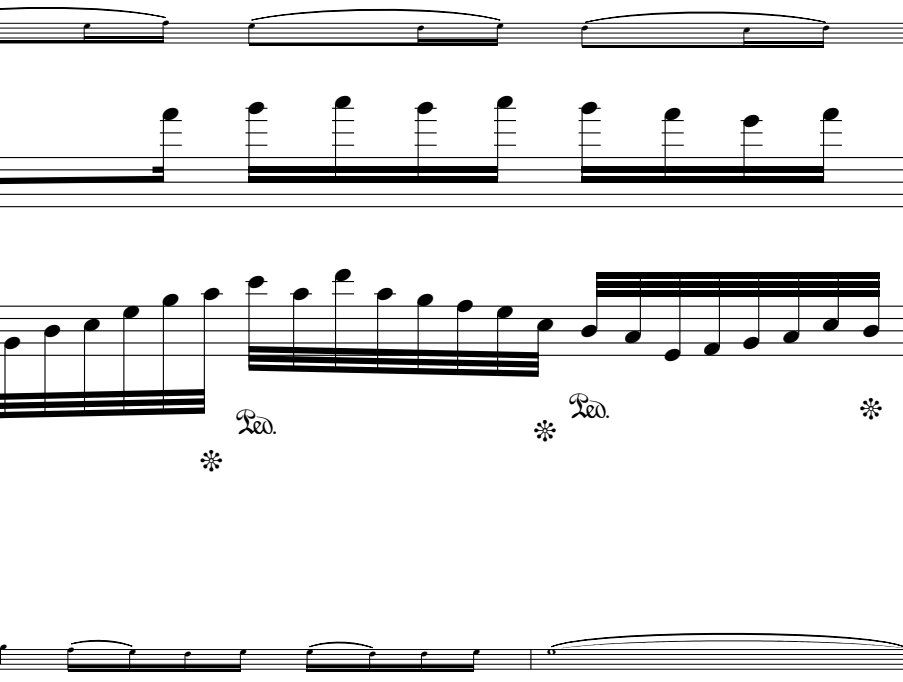
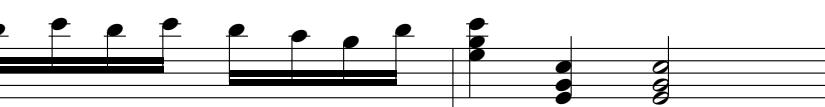

Copyright: Julius B Schmidt




- 8 -  
© June 2002 Julius B Schmidt



Violin Fantasy in A Minor - Piano

Vln.  31  31  *Leg.* \* *Leg.* \* *Leg.* \* *Leg.* \*

Vln.  32  32  *Leg.* \* *Leg.* \* *Leg.* \* *Leg.* \* *Leg.* \* *Leg.* \* *Leg.* \*



Vln.  34  34  *Leg.* \* *Leg.* \* *Leg.* \* *Leg.* \* *Leg.* \* *Leg.* \* *Leg.* \* *Leg.* \*



Copyright: Julius B Schmidt



© June 2002 Julius B Schmidt



Violin Fantasy in A Minor - Piano

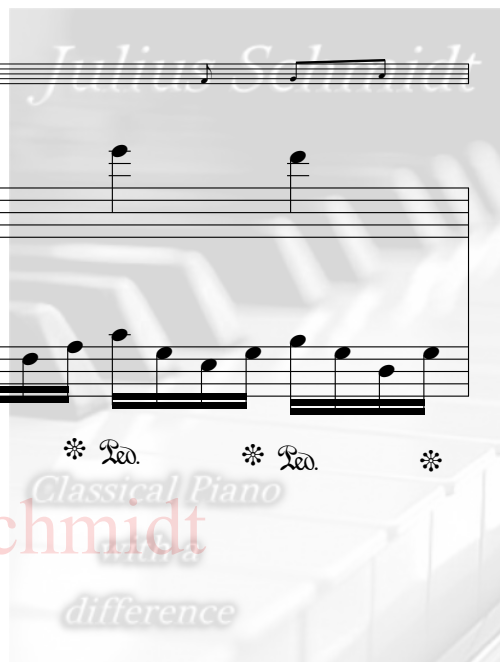
Vln.  Pno.   
Ped. \* Ped. \* Ped. \* Ped. \* Ped. \* Ped. \* Ped. \* Ped. \* Ped. \* Ped. \* Ped. \*

Vln.  Pno.   
Ped. \* Ped. \* Ped. \* Ped. \* Ped. \* Ped. \* Ped. \* Ped. \* Ped. \* Ped. \* Ped. \*

Vln.  Pno.   
Ped. \* Ped. \* Ped. \* Ped. \* Ped. \* Ped. \* Ped. \* Ped. \* Ped. \* Ped. \*

Copyright: Julius B Schmidt

- 10 -  
© June 2002 Julius B Schmidt



Violin Fantasy in A Minor - Piano

Vln. 45

Pno. 45

Ped. \* Ped. \* Ped. \* Ped. \* Ped. \* Ped. \* Ped. \* Ped. \*

Vln. 47

Pno. 47

Ped. \* Ped. \* Ped. \* Ped. \* Ped. \* Ped. \* Ped. \* Ped. \*

Vln. 50

Pno. 50

Ped. \* Ped. \* Ped. \* Ped. \* Ped. \* Ped. \* Ped. \* Ped. \* Ped. \* Ped. \* Ped. \* Ped. \*

Copyright: Julius B Schmidt

© June 2002 Julius B Schmidt



Violin Fantasy in A Minor - Piano

Vln. 54

Pno. 54

Ped. \* Ped. \* Ped. \* Ped. \*

Vln. 55

Pno. 55

Ped. \* Ped. \* Ped. \* Ped. \*

Vln. 56

Pno. 56

Ped. \* Ped. \* Ped. \* Ped. \*




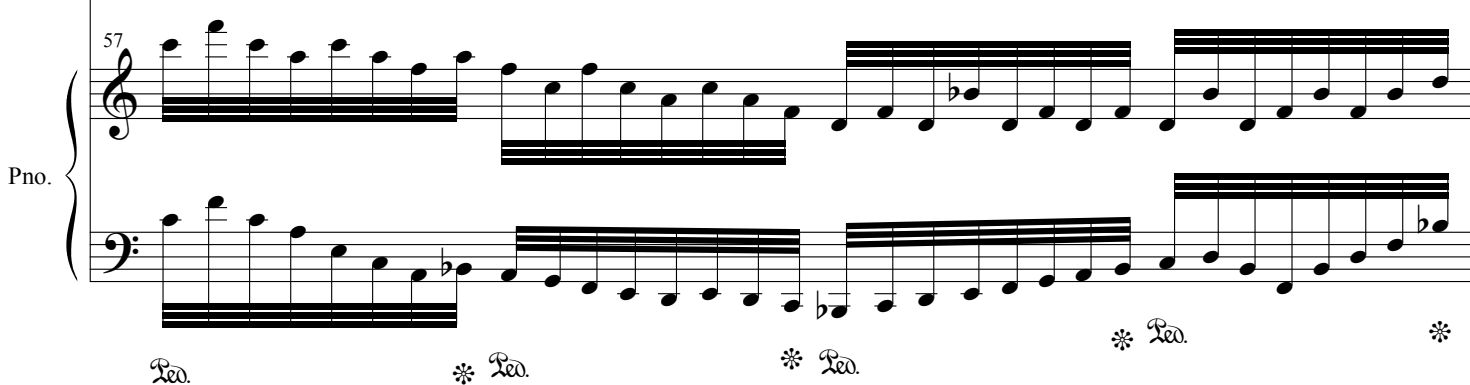
Copyright: Julius B Schmidt


- 12 -  
© June 2002 Julius B Schmidt

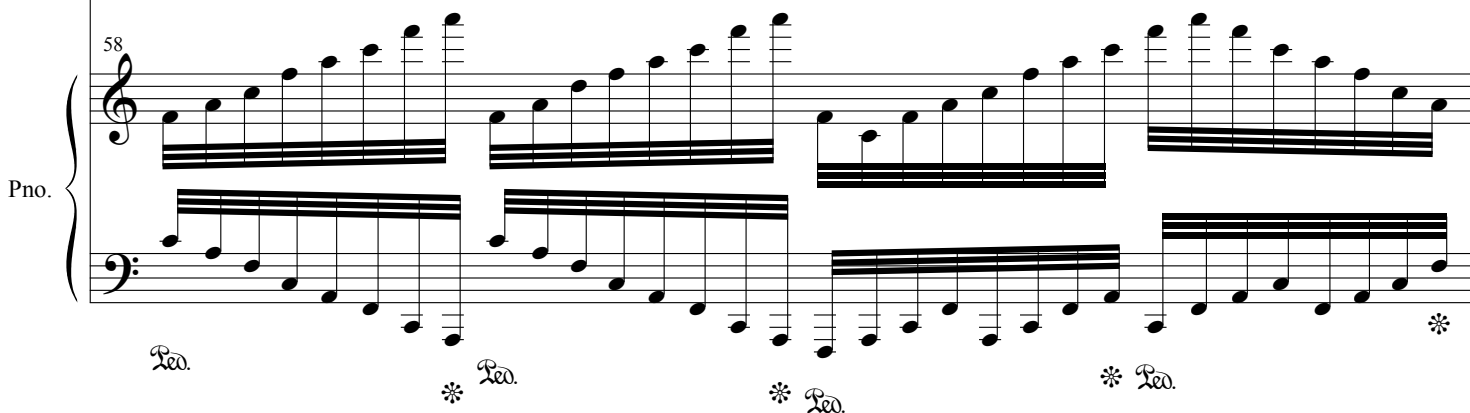


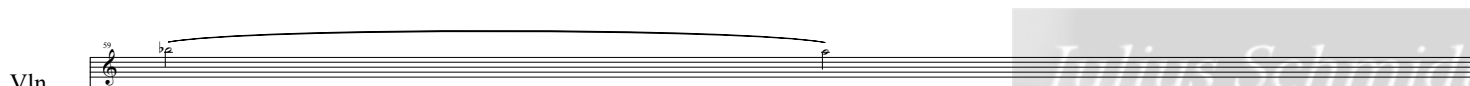
Violin Fantasy in A Minor - Piano

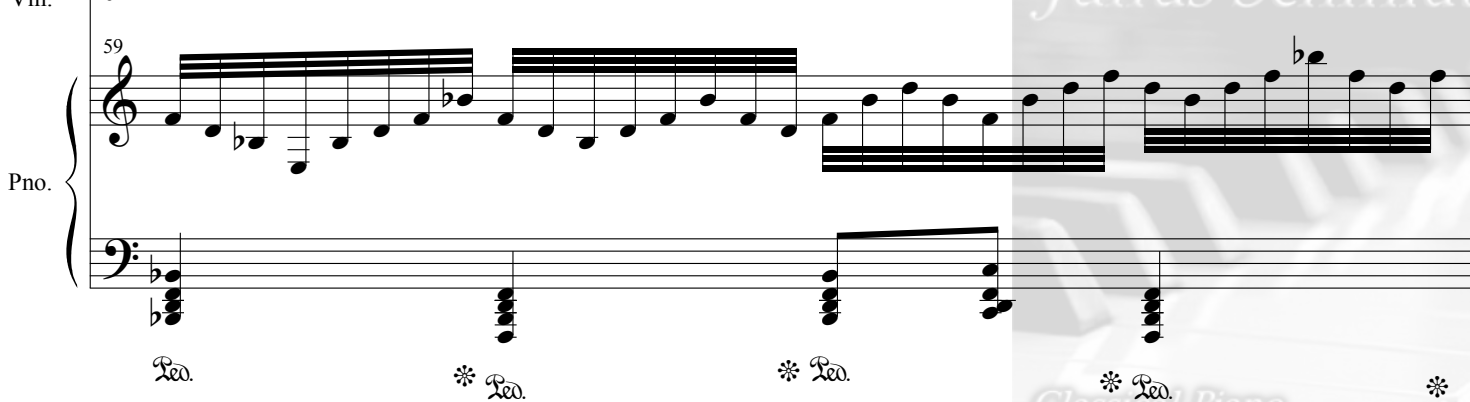
Vln. 

Pno. 

Vln. 

Pno. 

Vln. 

Pno. 

Copyright: Julius B Schmidt

© June 2002 Julius B Schmidt



Violin Fantasy in A Minor - Piano

Vln.

60

Pno.

Red. \* Red. \* Red. \* Red. \*

Detailed description: This system covers measures 60 to 64. The Violin part (Vln.) begins at measure 60 with a half rest, followed by a melodic line of eighth notes. The Piano part (Pno.) features a complex texture with multiple layers of notes in both hands. Below the piano part, there are five dynamic markings: 'Red.' at the start of measure 60, '\* Red.' at the start of measure 61, '\* Red.' at the start of measure 62, '\* Red.' at the start of measure 63, and '\*' at the start of measure 64.

Vln.

61

Pno.

Red. \* Red. \* Red. \* Red. \*

Detailed description: This system covers measures 61 to 65. The Violin part (Vln.) starts at measure 61 with a half rest, followed by a melodic line. The Piano part (Pno.) continues with its complex texture. Below the piano part, there are five dynamic markings: 'Red.' at the start of measure 61, '\* Red.' at the start of measure 62, '\* Red.' at the start of measure 63, '\* Red.' at the start of measure 64, and '\*' at the start of measure 65.

Vln.

62

Pno.

Red. \* Red. \* Red. \* Red. \*

Detailed description: This system covers measures 62 to 66. The Violin part (Vln.) starts at measure 62 with a half rest, followed by a melodic line. The Piano part (Pno.) continues with its complex texture. Below the piano part, there are five dynamic markings: 'Red.' at the start of measure 62, '\* Red.' at the start of measure 63, '\* Red.' at the start of measure 64, '\* Red.' at the start of measure 65, and '\*' at the start of measure 66.

Copyright: Julius B Schmidt

- 14 -  
© June 2002 Julius B Schmidt



Violin Fantasy in A Minor - Piano

Vln.

63

Pno.

Ped. \* Ped. \* Ped. \* Ped. \*

Detailed description: This system covers measures 63 to 67. The violin part (Vln.) is mostly silent, with a long fermata over the first measure. The piano part (Pno.) features a complex texture with sixteenth-note runs in the right hand and block chords in the left hand. Pedal markings are placed below the bass line: 'Ped.' under measure 63, '\* Ped.' under measure 64, '\* Ped.' under measure 65, '\* Ped.' under measure 66, and '\*' under measure 67.

Vln.

64

Pno.

Ped. \* Ped. \* Ped. \* Ped. \*

Detailed description: This system covers measures 64 to 68. The violin part (Vln.) has a long fermata over the first measure. The piano part (Pno.) continues with sixteenth-note runs in the right hand and block chords in the left hand. Pedal markings are placed below the bass line: 'Ped.' under measure 64, '\* Ped.' under measure 65, '\* Ped.' under measure 66, '\* Ped.' under measure 67, and '\*' under measure 68.

Vln.

65

Pno.

Ped. \* Ped. \* Ped. \* Ped. \*


Detailed description: This system covers measures 65 to 69. The violin part (Vln.) has a long fermata over the first measure. The piano part (Pno.) features sixteenth-note runs in the right hand and block chords in the left hand. Pedal markings are placed below the bass line: 'Ped.' under measure 65, '\* Ped.' under measure 66, '\* Ped.' under measure 67, '\* Ped.' under measure 68, and '\*' under measure 69.

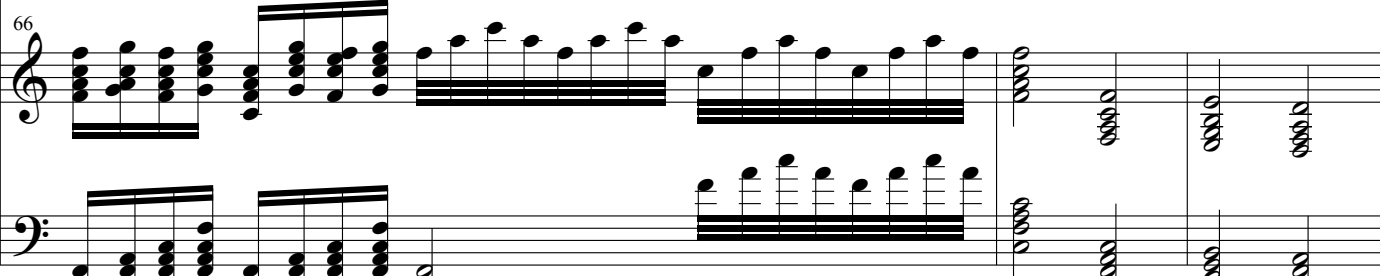
Copyright: Julius B Schmidt


© June 2002 Julius B Schmidt



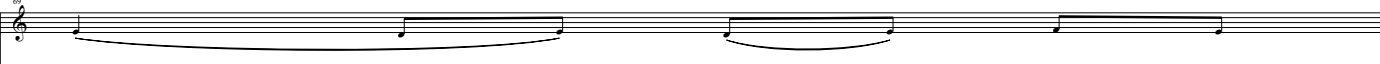
Violin Fantasy in A Minor - Piano

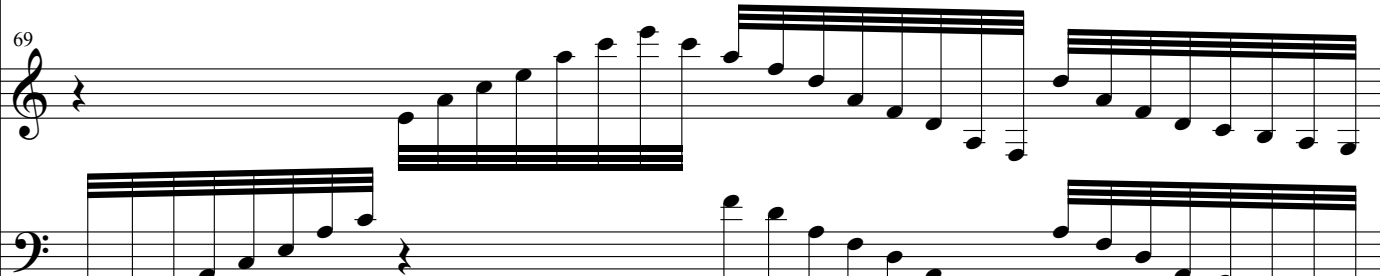
Vln. 


Pno. 

66 


Red. \* Red. \* Red. \* Red. \* Red. \* Red. \*

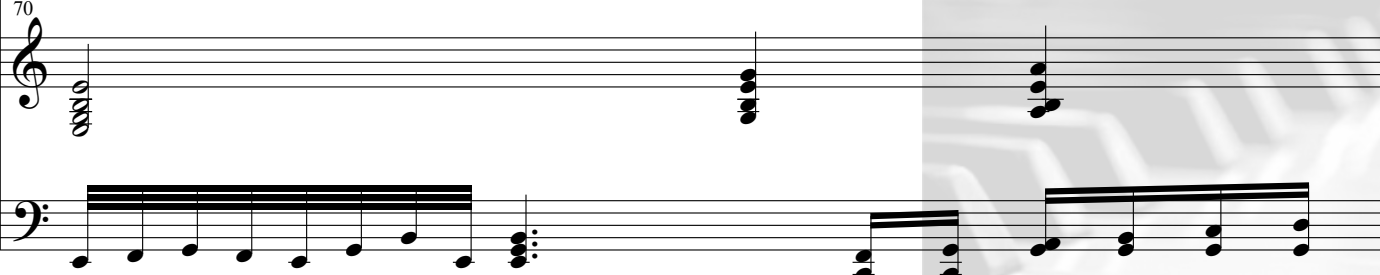
Vln. 


Pno. 

69 

Red. \* Red. \* Red. \*

Vln. 

Pno. 

70 


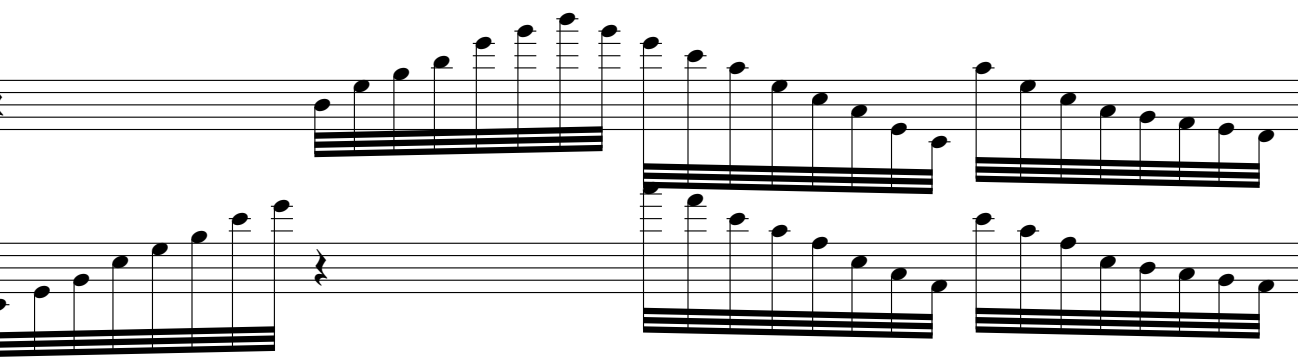
Red. \* Red. \* Red. \*

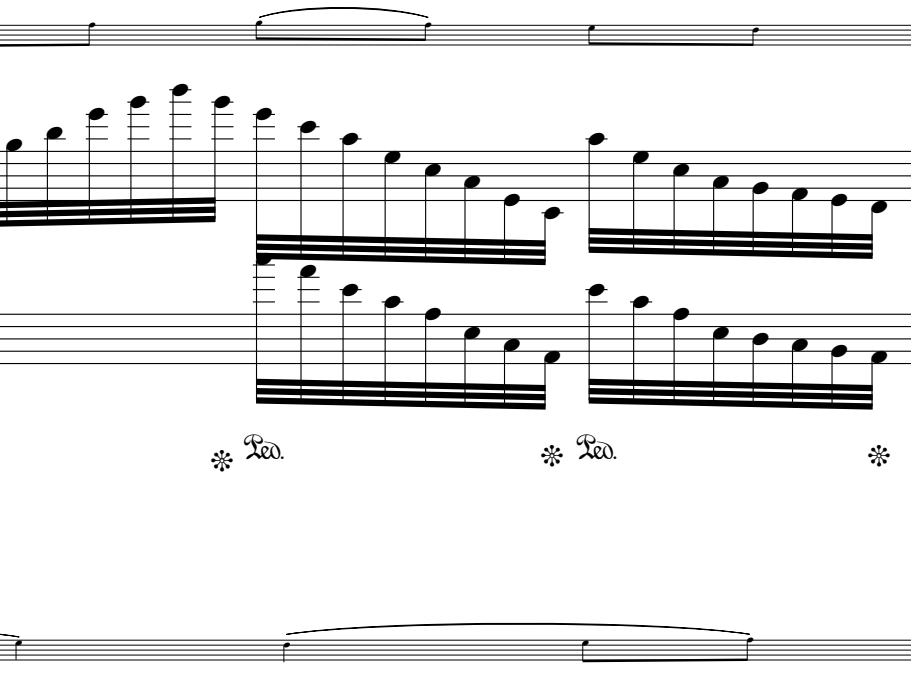

Copyright: Julius B Schmidt

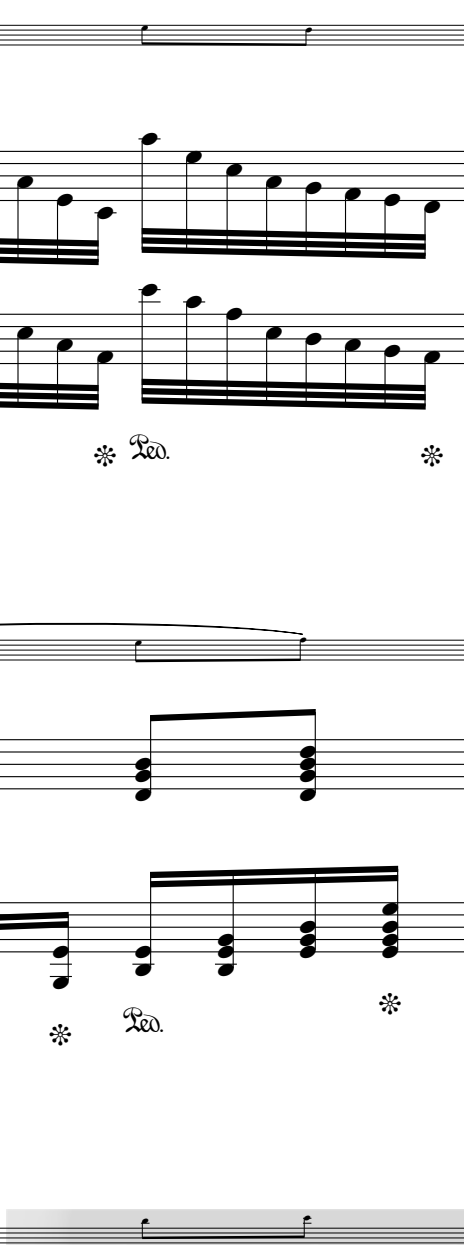
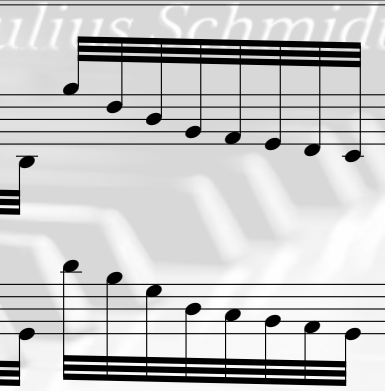
- 16 -  
© June 2002 Julius B Schmidt



Violin Fantasy in A Minor - Piano

Vln.    
 Pno.    
 Ped. \* Ped. \* Ped. \*

Vln.    
 Pno.    
 Ped. \* Ped. \* Ped. \*

Vln.    
 Pno.    
 Ped. \* Ped. \* Ped. \*


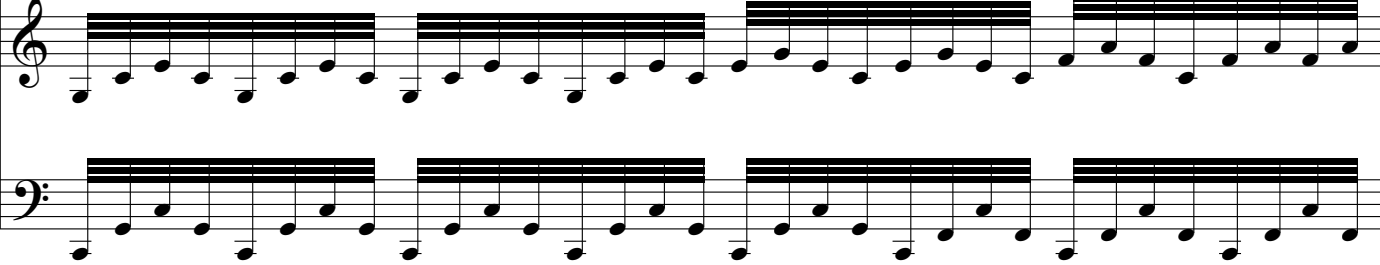
Copyright: Julius B Schmidt

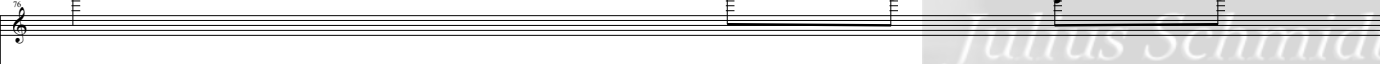
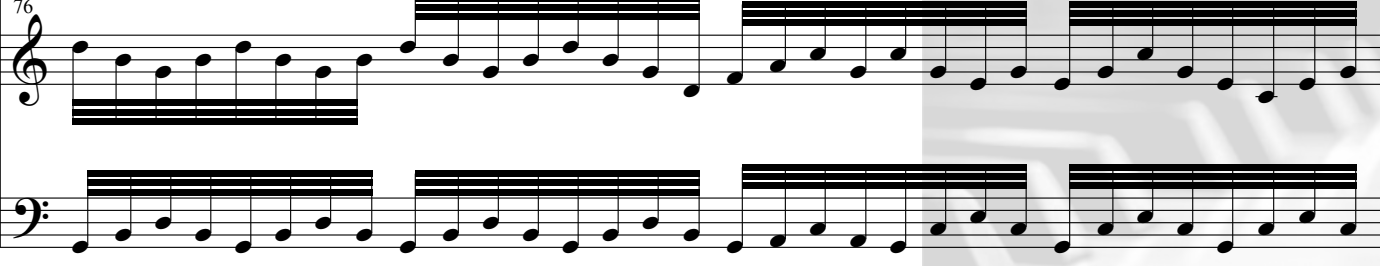
© June 2002 Julius B Schmidt



Violin Fantasy in A Minor - Piano

Vln.   
Pno.   
Ped. \* Ped. \* Ped. \* Ped. \* Ped. \* Ped. \* Ped. \* Ped. \*


Vln.   
Pno.   
Ped. \* Ped. \* Ped. \* Ped. \* Ped. \* Ped. \* Ped. \* Ped. \*

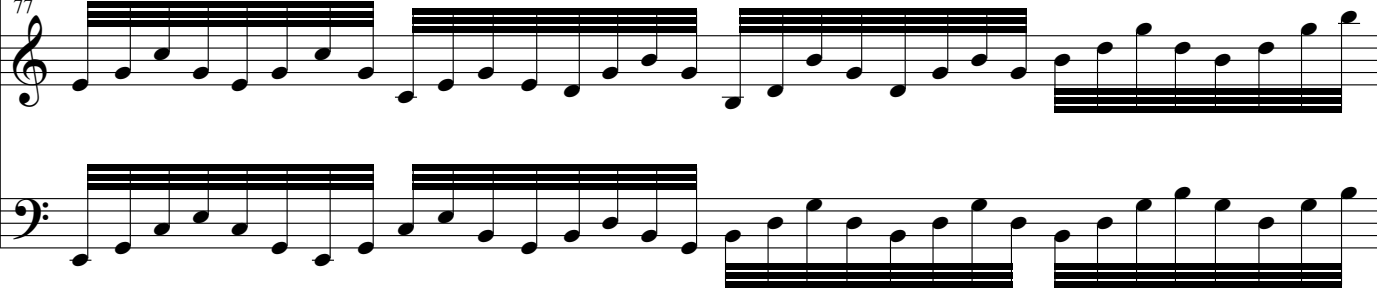
Vln.   
Pno.   
Ped. \* Ped. \* Ped. \* Ped. \*

Copyright: Julius B Schmidt - 18  
© June 2002 Julius B Schmidt



Violin Fantasy in A Minor - Piano

Vln. 

Pno. 

Ped. \* Ped. \* Ped. \* Ped. \* Ped. \* Ped. \* Ped. \*

Vln. 

Pno. 

Ped. \* Ped. \* Ped. \* Ped. \* Ped. \* Ped. \* Ped. \* Ped. \* Ped. \*

Vln. 

Pno. 



Ped. \* Ped. \* Ped. \* Ped. \* Ped. \* Ped. \* Ped. \* Ped. \*


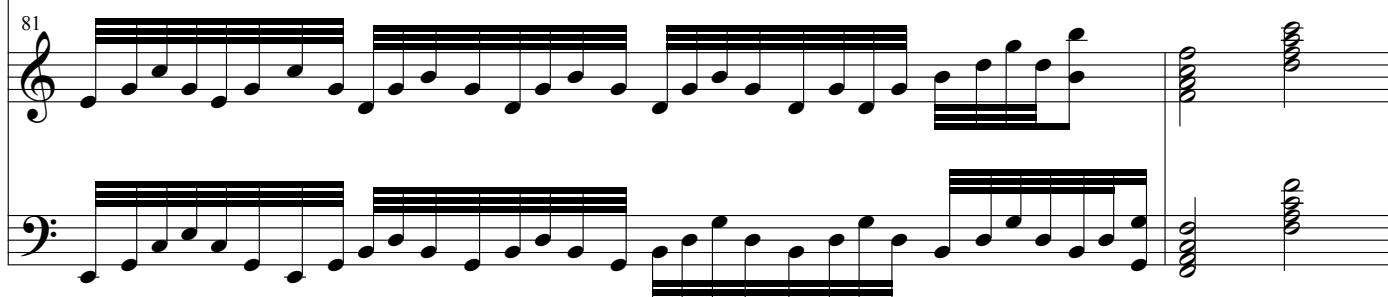
Copyright: Julius B Schmidt


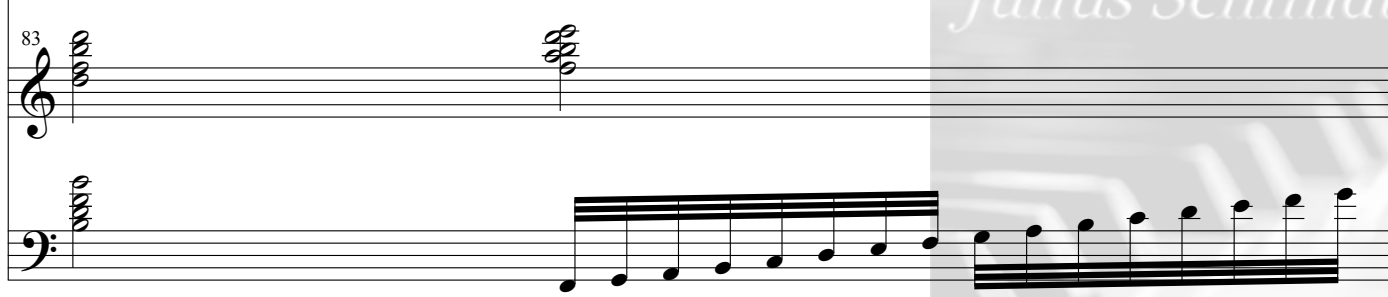
© June 2002 Julius B Schmidt



Violin Fantasy in A Minor - Piano

Vln.   
Pno.   
Ped. \* Ped. \* Ped. \* Ped. \* Ped. \* Ped. \* Ped. \* Ped. \*

Vln.   
Pno.   
Ped. \* Ped. \* Ped. \* Ped. \* Ped. \* Ped. \* Ped. \* Ped. \*

Vln.   
Pno.   
Ped. \* Ped. \*

Copyright: Julius B Schmidt

© June 2002 Julius B Schmidt

Downloaded for free.  
free-scores.com





Violin Fantasy in A Minor - Piano

Vln. 84

Pno.

Red. \* Red. \* Red. \*

Vln. 85

Pno.

Red. \* Red. \* Red. \* Red. \* Red. \* Red. \* Red. \* Red. \* Red. \*

Vln. 87

Pno.

Red. \* Red. \* Red. \* Red. \* Red. \* Red. \* Red. \* Red. \*

Copyright: Julius B Schmidt

© June 2002 Julius B Schmidt

Downloaded for free.  
free-scores.com



Violin Fantasy in A Minor - Piano

Vln. 89

Pno. 89

Ped. \* Ped. \* Ped. \*

Vln. 90

Pno. 90

Ped. \* Ped. \* Ped. \* Ped. \*

Vln. 91


Pno. 91


Ped. \* Ped. \* Ped. \* Ped. \*

Copyright: Julius B Schmidt  
© June 2002 Julius B Schmidt




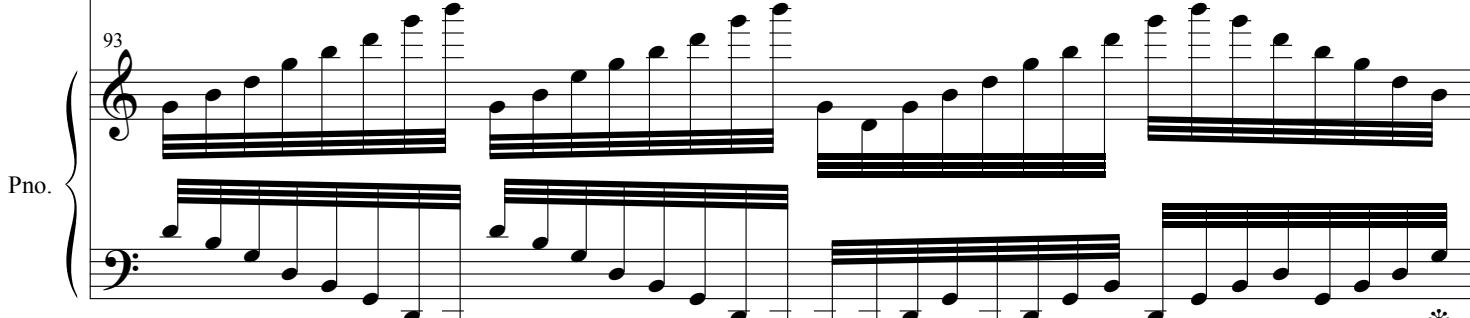
Violin Fantasy in A Minor - Piano

Vln. 

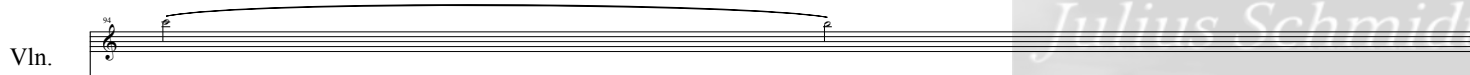
Pno. 

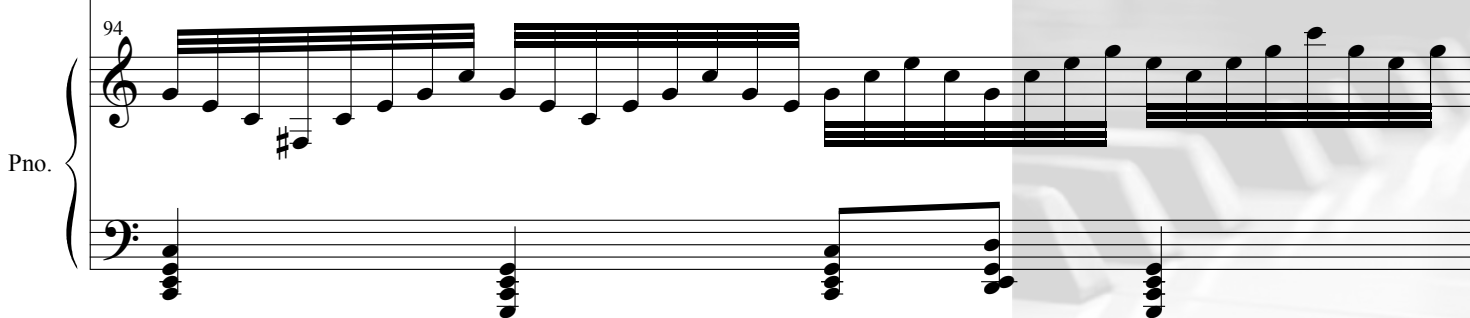
*Red.* \* *Red.* \* *Red.* \* *Red.* \*

Vln. 

Pno. 

*Red.* \* *Red.* \* *Red.* \* *Red.* \*

Vln. 

Pno. 

*Red.* \* *Red.* \* *Red.* \* *Red.* \*

Copyright: Julius B Schmidt

© June 2002 Julius B Schmidt



Violin Fantasy in A Minor - Piano

Vln.

95

Pno.

Ped. \* Ped. \* Ped. \* Ped. \*

Vln.

96

Pno.

Ped. \* Ped. \* Ped. \* Ped. \*

Vln.

97

Pno.

Ped. \* Ped. \* Ped. \* Ped. \*

Copyright: Julius B Schmidt

- 24 -  
© June 2002 Julius B Schmidt



Violin Fantasy in A Minor - Piano

Vln.

Pno.

98

Ped. \* Ped. \* Ped. \* Ped. \*

Vln.

Pno.

99

Ped. \* Ped. \* Ped. \* Ped. \*

Vln.

Pno.

100

Ped. \* Ped. \* Ped. \* Ped. \*

Copyright: Julius B Schmidt

© June 2002 Julius B Schmidt



Violin Fantasy in A Minor - Piano

Vln. <sup>101</sup>

Pno. <sup>101</sup>

Lea. \* Lea. \* Lea. \* Lea. \*

Vln. <sup>102</sup>

Pno. <sup>102</sup>

Lea. \* Lea. \* Lea. \*

Copyright: Julius B Schmidt

- 26 -  
© June 2002 Julius B Schmidt

