

SONATA

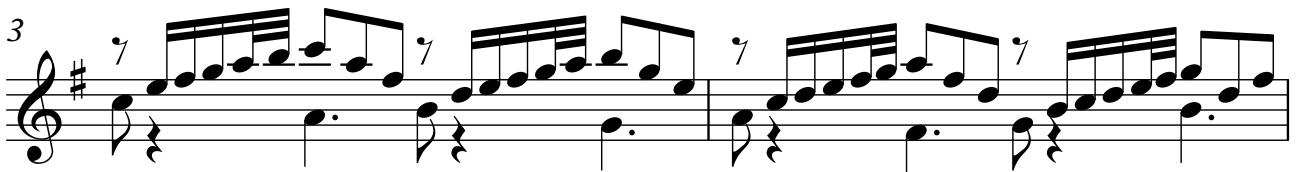
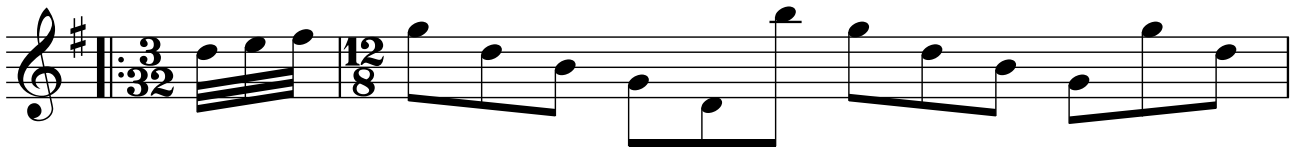
K14

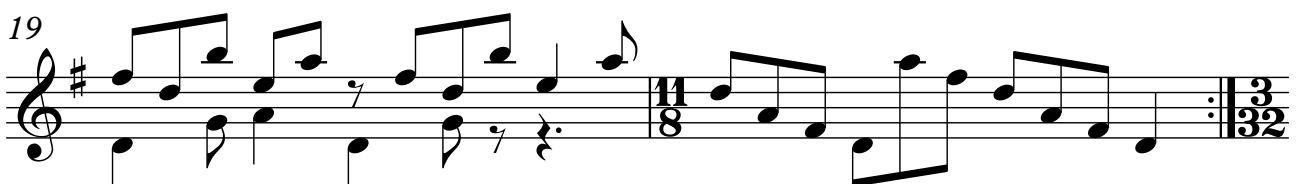
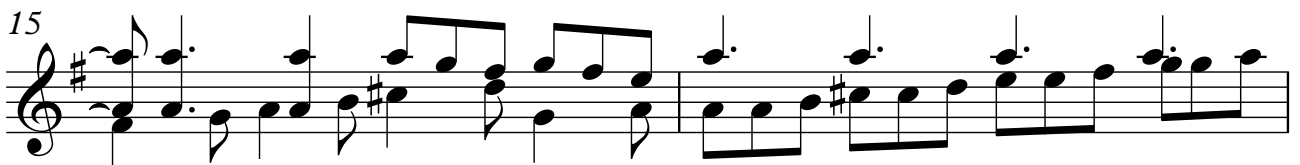
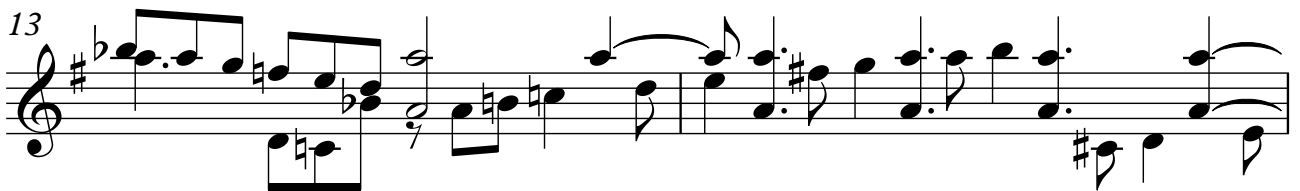
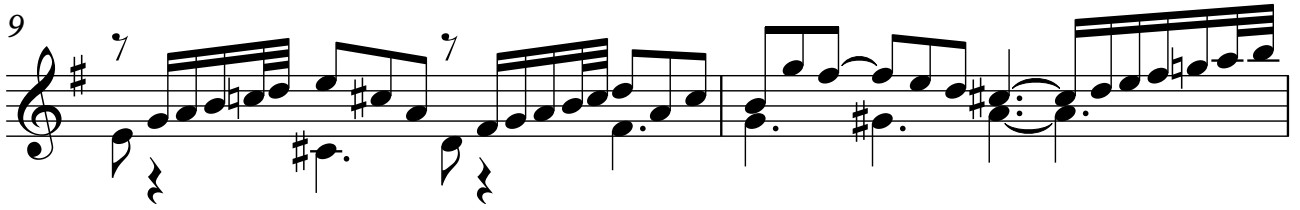
TRANSCRIPCIÓN: LUIS ALVAREZ

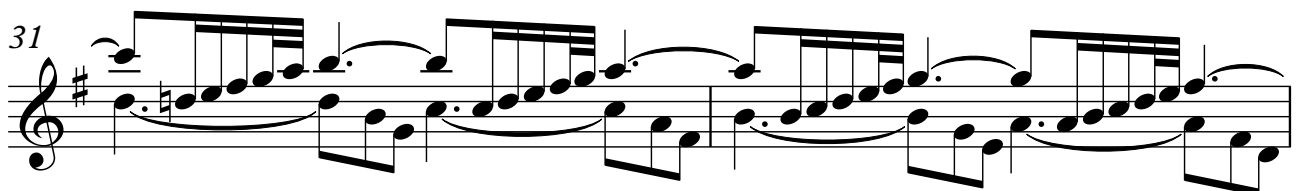
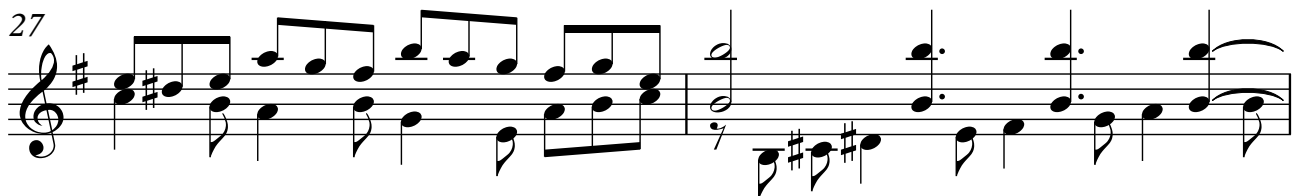
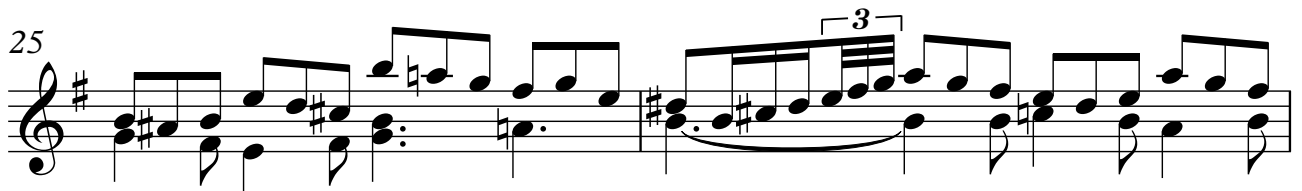
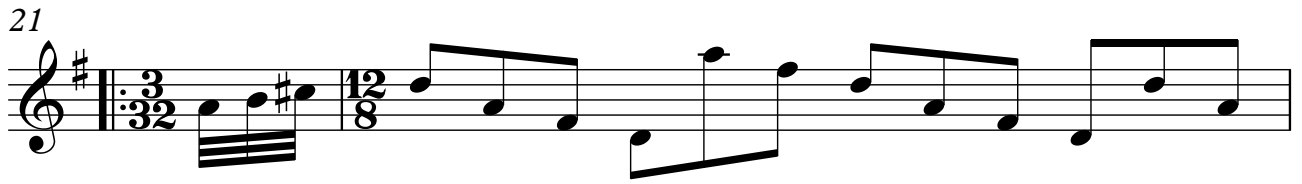
DOMENICO SCARLATTI

(1685-1757)

$\text{♩} = 140$







33

Musical notation for measures 33 and 34. Measure 33 features a treble clef, a key signature of one sharp (F#), and a 4/4 time signature. The melody consists of eighth notes, and the bass line features a steady eighth-note accompaniment. Measure 34 continues the melody with a fermata over the final note.

35

Musical notation for measures 35 and 36. Measure 35 continues the melody with a fermata over the final note. Measure 36 features a treble clef, a key signature of one sharp (F#), and a 4/4 time signature. The melody consists of eighth notes, and the bass line features a steady eighth-note accompaniment.

37

Musical notation for measures 37 and 38. Measure 37 features a treble clef, a key signature of one sharp (F#), and a 4/4 time signature. The melody consists of eighth notes, and the bass line features a steady eighth-note accompaniment. Measure 38 continues the melody with a fermata over the final note.

39

Musical notation for measures 39 and 40. Measure 39 features a treble clef, a key signature of one sharp (F#), and a 4/4 time signature. The melody consists of eighth notes, and the bass line features a steady eighth-note accompaniment. Measure 40 continues the melody with a fermata over the final note.

41

Musical notation for measures 41 and 42. Measure 41 features a treble clef, a key signature of one sharp (F#), and a 4/4 time signature. The melody consists of eighth notes, and the bass line features a steady eighth-note accompaniment. Measure 42 continues the melody with a fermata over the final note.

43

Musical notation for measures 43 and 44. Measure 43 features a treble clef, a key signature of one sharp (F#), and a 4/4 time signature. The melody consists of eighth notes, and the bass line features a steady eighth-note accompaniment. Measure 44 continues the melody with a fermata over the final note.

45

Musical notation for measures 45 and 46. Measure 45 features a treble clef, a key signature of one sharp (F#), and a 9/8 time signature. The melody consists of eighth notes, and the bass line features a steady eighth-note accompaniment. Measure 46 continues the melody with a fermata over the final note.