



Salvatore Scinaldi

Compositeur, Directeur, Interprete, Professeur

Italie, Palermo

A propos de l'artiste

Salvatore Scinaldi has taken his degree in piano at the Conservatorio Vincenzo Bellini in Palermo with M.ro G.F.Lo Re and in Didactic of Music with summa cum laude.He also attended the course of Harmony and Counterpoint.He has an intense concertistic activity not only as piano repertoire but also as choir conductor. In 2006 he made his debut as orchestra conductor with the opera "La Serva Padrona" by G.B:Pergolesi which opens the theatre of Racalmuto(Ag) for the first time to the opera singing.

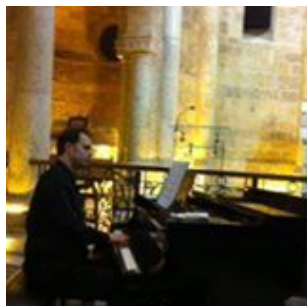
M.ro Scinaldi has won several national and international musical competitions.Ha has collaborated with important cultural and musical institutions such as Teatro Massimo,Teatro Biondo and the Orchestra Sinfonica Siciliana of Palermo but also with, Torre del Lago Puccini Festival, the National Theatre in Malta ,The Julliard Orchestra in New York and The Festival dei Due Mondi in Spoleto.

He has worked with artists and musicians known all over the world such as : A. Rosand, R. Koelman, R. Bobo, Uto Ughi,N. Mazzanti, E. Dara, R. Panerai, R. Bruson, M. Freni, N. Ghiaurov, D. Barcellona, L. Gallo, A. Raspagliesi,R. Servile, O. Romanko, M. Gauci, S. Alaimo, K. Ricciarelli and famous conductors such as M .J. Stringer, M. Honeck, M. Laus .

M.ro Scinaldi ha... (la suite en ligne)

Sociétaire : SIAE - Code IPI artiste : 159898

A propos de la pièce



Titre: Preludio for piano
Compositeur: Salvatore Scinaldi
Licence: Scinaldi Salvo © All rights reserved
Instrumentation: Piano seul
Style: Classique moderne

Salvatore Scinaldi sur [free-scores.com](http://www.free-scores.com)

http://www.free-scores.com/partitions_gratuites_salvoscialdi.htm

- Contacter l'artiste
- Commenter cette partition
- Ajouter votre interprétation MP3
- Accès partition avec ce QR Code :



Cette partition ne fait pas partie du domaine public. Merci de contacter l'artiste pour toute utilisation hors du cadre privé.

Interdiction de diffusion sur d'autres sites Web.

Preludio per Arpa

uno stato d'animo: il nulla

Salvatore Scinaldi

Lento e Sostenuto

Pianoforte

pp molto delicato

Ped. _____

7

ppp *pp* *slentando a tempo*

cambio del Ped. ad ogni accordo

13

Rall...molto... *ppp*

19

ppp *Rall.....* *delicato sostenuto*

25

sostenuto sino alla fine *ppp*