



Tremolada Roberto

Italie

5)L'Ira di Rodipan (dal Poema Sinfonico per Orchestra LA BATTAGLIA DEI RODITORI E DELLE RANOCCHIE)

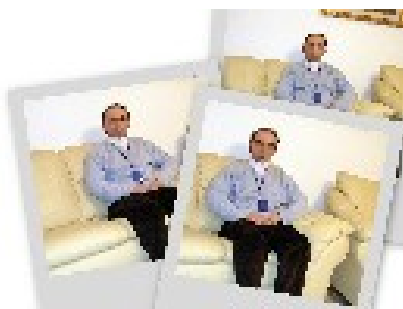
A propos de l'artiste

Nom Tremolada Nom Roberto Date de naissance 5 Juin 1961 Lieu de naissance Monza Adresse Via N. Bixio 15 - 20046 Biassono MI Téléphone 3475158471 - 393934234541 E-mail idrafilm2000@msn.com Site Web <http://roberto2000.altervista.org/> Profil Parolier et compositeur pour l'écriture Monzese SIAE Diplôme en électricité et électronique, est né à Monza en 1961 et est situé dans le monde de la musique de la tradition famille son oncle Gabriel a été Brioschi violon et orchestre. Il a étudié la musique comme une autodidacte dans les livres édités par Piccolo Milan Conservatoire... (la suite en ligne)

Qualification : SIAE de qualification, compositeur et parolier

Page artiste : https://www.free-scores.com/partitions_gratuites_roberto2000.htm

A propos de la pièce



Titre : 5)L'Ira di Rodipan (dal Poema Sinfonico per Orchestra LA BATTAGLIA DEI RODITORI E DELLE RANOCCHIE)

Compositeur : Roberto, Tremolada

Arrangeur : Roberto, Tremolada

Droit d'auteur : Tremolada Roberto © All rights reserved

Instrumentation : Orchestre

Style : Classique

Commentaire : le poème symphonique pour Orchestra LA BATAILLE de rongeurs et de Ranocchia (Poema nom de G. Leopardi)

Tremolada Roberto sur [free-scores.com](https://www.free-scores.com)



Cette partition ne fait pas partie du domaine public. Merci de contacter l'artiste pour toute utilisation hors du cadre privé.



- écouter l'audio
- partager votre interprétation
- commenter la partition
- contacter l'artiste

L'Tra di Rodipan

Roberto Tremolada

Proprietà per tutti i paesi: Edizioni Musicali IMG s.a.s. Via Lenze 26,83035 Grottaferrata (AV)
© Copyright 2008 by Edizioni Musicali IMG s.a.s.
Tutti i diritti sono riservati a termini di Legge. All rights reserved International copyright secured

Adagio ♩ = 66

Piano
Piano

Arpa
Arpa

Coro
Coro

Flauto 1
Flauto 2
Ottavino
Oboe
Clarinetto 1-Sib.
Clarinetto 2-Sib.
Fagotto
Corno in Fa
Tromb. 1 in Sib
Tromb. 2 in Sib
Tromboni 1 e 2
Tuba
Timpani
Tamburi
Piatto
Camp. Tub.
Violini 1
Violini 2
Viola
Violoncello
Contrabbasso

mf *mp* *f* *pp* *p*

This page of the musical score includes the following parts and markings:

- Pn.** (Piano): Two staves, mostly silent.
- Harp** (Arp.): Two staves, mostly silent.
- Choir** (Cor.): Two staves, mostly silent.
- Fl. 1** (Fl. 1): One staff, mostly silent.
- Fl. 2** (Fl. 2): One staff, mostly silent.
- Ottav.** (Ottav.): One staff, mostly silent.
- Ob.** (Ob.): One staff, playing a melodic line starting with a *mp* dynamic.
- Cl. 1-Sib.** (Cl. 1-Sib.): One staff, mostly silent.
- Cl. 2-Sib.** (Cl. 2-Sib.): One staff, playing a melodic line starting with a *mp* dynamic.
- Fag.** (Fag.): One staff, mostly silent.
- Corn. Fa.** (Corn. Fa.): One staff, mostly silent.
- Tr. 1 Sib.** (Tr. 1 Sib.): One staff, mostly silent.
- Tr. 2 Sib.** (Tr. 2 Sib.): One staff, mostly silent.
- Tromb. Sib.** (Tromb. Sib.): One staff, playing a melodic line starting with a *p* dynamic.
- Tub.** (Tub.): One staff, playing a melodic line starting with a *p* dynamic.
- Timp.** (Timp.): One staff, playing a rhythmic pattern.
- Tamb.** (Tamb.): One staff, mostly silent.
- Piat.** (Piat.): One staff, mostly silent.
- Camp. Tub.** (Camp. Tub.): One staff, mostly silent.
- VI. 1** (VI. 1): One staff, playing a melodic line starting with a *p* dynamic, marked *1^{sa}* and *2^{em}*.
- VI. 2** (VI. 2): One staff, mostly silent.
- VI. 2** (VI. 2): One staff, mostly silent.
- Viol.** (Viol.): One staff, playing a melodic line starting with a *f* dynamic.
- Violonc.** (Violonc.): One staff, playing a melodic line starting with a *pp* dynamic.
- VI.** (VI.): One staff, mostly silent.
- Contr.** (Contr.): One staff, playing a melodic line starting with a *p* dynamic.

This page of the musical score includes the following parts and markings:

- Ph.** (Piano) staves.
- Harp** (Arp.) staves.
- Choir** (Cor.) staves.
- Fl.** (Flute) 1 and 2 staves, with dynamics *mp*, *f*, and *p*.
- Ottav.** (Oboe) staff, with dynamics *mp* and *f*.
- Ob.** (Clarinet) staff, with dynamics *mp* and *f*.
- Cl. 1-Sb.** (Clarinete) staff, with dynamics *mp* and *f*.
- Cl. 2-Sb.** (Clarinete) staff, with dynamics *mp* and *f*.
- Fag.** (Bassoon) staff, with dynamics *mp* and *f*.
- Com. Fa.** (Fagotto) staff, with dynamics *mp* and *f*.
- Tr. 1 Sib.** (Tromba) staff.
- Tr. 2 Sib.** (Tromba) staff.
- Tromb. Sib.** (Tromba) staff.
- Tub.** (Tuba) staff, with dynamics *mp* and *f*.
- Timp.** (Timpani) staff, with dynamics *mp* and *f*.
- Tamb.** (Tambourin) staff, with dynamics *mp* and *f*.
- Piat.** (Piatello) staff.
- Camp. Tub.** (Campana) staff.
- VI. 1** (Violino) staff, with dynamics *p*, *f*, and *mf*.
- VI. 2** (Violino) staff, with dynamics *f* and *mf*.
- VI. 2** (Violino) staff.
- Viol.** (Viola) staff, with dynamics *f*, *mp*, and *mf*.
- Violonc.** (Violoncello) staff, with dynamics *pp* and *f*.
- VI.** (Violoncello) staff, with dynamics *mp* and *f*, and markings *Pizz.*
- Contr.** (Contrabbasso) staff, with dynamics *p* and *f*.

This page of the musical score includes the following parts and markings:

- Piano (Pn.):** Two staves with dynamic markings *mp* and *f*.
- Harp (Arp.):** Two staves with dynamic markings *mp* and *f*.
- Choir (Cor.):** Two staves with dynamic markings *mp* and *f*.
- Flutes (Fl. 1, Fl. 2):** Two staves with dynamic markings *mp* and *f*.
- Oboe (Ottav.):** One staff with dynamic markings *mp* and *f*.
- Clarinets (Cl. 1-Sib., Cl. 2-Sib.):** Two staves with dynamic markings *mp* and *f*.
- Bassoon (Fag.):** One staff with dynamic markings *mp* and *f*.
- Trumpets (Tr. 1 Sib., Tr. 2 Sib.):** Two staves with dynamic markings *mp* and *f*.
- Trombones (Tromb. Sib., Tub.):** Two staves with dynamic markings *mp* and *f*.
- Timpani (Timp.):** One staff with dynamic markings *mp* and *f*.
- Tam-tam (Tamb.):** One staff with dynamic markings *mp* and *f*.
- Percussion (Piat.):** One staff with dynamic markings *mp* and *f*.
- Trumpets (Camp. Tub.):** One staff with dynamic markings *mp* and *f*.
- Violins (VI. 1, VI. 2):** Two staves with dynamic markings *mp* and *f*.
- Viola (VI. 2):** One staff with dynamic markings *mp* and *f*.
- Violoncello (Violonc.):** One staff with dynamic markings *mp* and *f*.
- Double Bass (VI.):** One staff with dynamic markings *mp* and *f*.
- Contrabass (Contr.):** One staff with dynamic markings *mp* and *f*.

This page of the musical score includes the following parts and measures:

- Pn.** (Piano): Measures 124, 126, 127.
- Harp** (Arp.): Measures 124, 126, 127.
- Choir** (Cor.): Measures 124, 126, 127.
- Fl. 1** (Fl. 1): Measures 124, 126, 127.
- Fl. 2** (Fl. 2): Measures 124, 126, 127.
- Ottav.** (Ottav.): Measures 124, 126, 127.
- Ob.** (Ob.): Measures 124, 126, 127.
- Cl. 1-Sib.** (Cl. 1-Sib.): Measures 124, 126, 127.
- Cl. 2-Sib.** (Cl. 2-Sib.): Measures 124, 126, 127.
- Fag.** (Fag.): Measures 124, 126, 127.
- Corn. Fa.** (Corn. Fa.): Measures 124, 126, 127.
- Tr. 1 Sib.** (Tr. 1 Sib.): Measures 124, 126, 127.
- Tr. 2 Sib.** (Tr. 2 Sib.): Measures 124, 126, 127.
- Tromb. Sib.** (Tromb. Sib.): Measures 124, 126, 127.
- Tub.** (Tub.): Measures 124, 126, 127.
- Timp.** (Timp.): Measures 124, 126, 127.
- Tamb.** (Tamb.): Measures 124, 126, 127.
- Piat.** (Piat.): Measures 124, 126, 127.
- Camp. Tub.** (Camp. Tub.): Measures 124, 126, 127.
- VI. 1** (VI. 1): Measures 124, 126, 127.
- VI. 2** (VI. 2): Measures 124, 126, 127.
- VI. 2** (VI. 2): Measures 124, 126, 127.
- Viol.** (Viol.): Measures 124, 126, 127.
- Violonc.** (Violonc.): Measures 124, 126, 127.
- VI.** (VI.): Measures 124, 126, 127.
- Contr.** (Contr.): Measures 124, 126, 127.

Pn.

Arp.

Cor.

Fl. 1

Fl. 2

Ottav.

Ob.

Cl. 1-Sib.

Cl. 2-Sib.

Fag.

Corn. Fa.

Tr. 1 Sib.

Tr. 2 Sib.

Tromb. Sib.

Tub.

Timp.

Tamb.

Piat.

Camp. Tub.

VI. 1

VI. 2

VI. 2

Violonc.

VI.

Contr.

128

129

f

ff

mf

Pn.

Harp

Choir

Fl. 1

Fl. 2

Ottav.

Ob.

Cl. 1-Sib.

Cl. 2-Sib.

Fag.

Corn. Fa.

Tr. 1 Sib.

Tr. 2 Sib.

Tromb. Sib.

Tub.

Timp.

Tamb.

Piat.

Camp. Tub.

VI. 1

VI. 2

Viol.

Violonc.

VI.

Contr.

40 41 42

Pn.

Arp.

Cor.

Fl. 1

Fl. 2

Ottav.

Ob.

Cl. 1-Sib.

Cl. 2-Sib.

Fag.

Corn. Fa

Tr. 1 Sib.

Tr. 2 Sib.

Tromb. Sib.

Tub.

Timp.

Tamb.

Piat.

Camp. Tub.

VI. 1

VI. 2

Viol.

Violonc.

VI.

Contr.

tr

tr

tr

pp

sf

mf

mp

pp

mf

pizz.

p

mf

43 44 45 46

Pn.

Arp.

Cor.

Fl. 1

Fl. 2

Ottav.

Ob.

Cl. 1-Sib.

Cl. 2-Sib.

Fag.

Corn. Fa

Tr. 1 Sib.

Tr. 2 Sib.

Tromb. Sib.

Tub.

Timp.

Tamb.

Piat.

Camp. Tub.

VI. 1

VI. 2

VI. 2

Violonc.

VI.

Contr.

pp *mp* *mf* *p* *f* *mp* *f* *mf* *pp* *tr.* *Pizz.*

Pn.
 Pn.
 Harp
 Arp.
 Arp.
 Choir
 Cor.
 Cor.
 Fl. 1
 Fl. 2
 Ottav.
 Ob.
 Cl. 1-Sib.
 Cl. 2-Sib.
 Fag.
 Corn. Fa
 Tr. 1 Sib.
 Tr. 2 Sib.
 Tromb. Sib.
 Tub.
 Timp.
 Tamb.
 Piat.
 Camp. Tub.
 VI. 1
 VI. 2
 VI. 2
 Violonc.
 VI.
 Contr.

Pn.
 Pn.
 Harp
 Arp.
 Arp.
 Choir
 Cor.
 Cor.
 Fl. 1
 Fl. 2
 Ottav.
 Ob.
 Cl. 1-Sib.
 Cl. 2-Sib.
 Fag.
 Corn. Fa
 Tr. 1 Sib.
 Tr. 2 Sib.
 Tromb. Sib.
 Tub.
 Timp.
 Tamb.
 Piat.
 Camp. Tub.
 VI. 1
 VI. 2
 VI. 2
 Violonc.
 VI.
 Contr.

Score for L'Tra di Rodipan, page 17. The score includes parts for Piano (Pn.), Harp (Arp.), Choir (Cor.), Flute (Fl. 1, Fl. 2), Oboe (Ob.), Clarinet (Cl. 1-Sib., Cl. 2-Sib.), Bassoon (Fag.), Horn (Corn. Fa), Trumpet (Tr. 1 Sib., Tr. 2 Sib.), Trombone (Tromb. Sib.), Tuba (Tub.), Snare Drum (Timp.), Tambourine (Tamb.), Piccolo (Piat.), Cymbal/Tam-tam (Camp. Tub.), Violin (VI. 1, VI. 2), Viola (Viol.), Violoncello (Violonc.), and Double Bass (VI.). The score features various musical notations including dynamics (mp, mf, p, ff), articulation (trills, pizzicato), and performance instructions. The key signature is one sharp (F#) and the time signature is 4/4.

Adagio mezzo $\text{♩} = 74$ 66

Instrumentation: Pn., Harp, Choir, Fl. 1, Fl. 2, Ottav., Ob., Cl. 1-Sib., Cl. 2-Sib., Fag., Corn. Fa., Tr. 1 Sib., Tr. 2 Sib., Tromb. Sib., Tub., Timp., Tamb., Piat., Camp. Tub., VI. 1, VI. 2, VI. 2, Viol., Violonc., VI., Contr.

Performance Instructions: *f*, *mp*, *p*, *ff*, *pp*, *mf*, *tr*, *Pizz.*, *Stm*, *Rcm*

Adagio ♩ = 66

Choir

Harp

Fl. 1 Fl. 2

Ob.

Cl. 1-Sib. Cl. 2-Sib.

Fag.

Corn. Fa.

Tr. 1 Sib. Tr. 2 Sib.

Tromb. Sib. Tub.

Timp.

Tamb.

Piat.

Camp. Tub.

VI. 1 VI. 2

Violonc.

VI.

Contr.

pp *mf* *f* *ff* *p*

Flauto Flauto Flauto Flauto

60 61 62

63 **Adagio** ♩ = 66 64 **Adagio** ♩ = 66 65

Ph. (Piano) staves 1-2

Harp (Arp.) staves 3-4

Choir (Cor.) staves 5-6

Fl. 1 (Flauto 1) staves 7-8

Fl. 2 (Flauto 2) staves 9-10

Ottav. (Ottavino) staves 11-12

Ob. (Oboe) staves 13-14

Cl. 1-Sib. (Clarineto 1-Sib.) staves 15-16

Cl. 2-Sib. (Clarineto 2-Sib.) staves 17-18

Fag. (Fagotto) staves 19-20

Com. Fa. (Corni in Fa) staves 21-22

Tr. 1 Sib. (Trombe 1-Sib.) staves 23-24

Tr. 2 Sib. (Trombe 2-Sib.) staves 25-26

Tromb. Sib. (Tromboni in Sib.) staves 27-28

Tub. (Tubi) staves 29-30

Timp. (Timpani) staves 31-32

Tamb. (Tamburi) staves 33-34

Piat. (Piatelli) staves 35-36

Camp. Tub. (Campanelli/Tubi) staves 37-38

VI. 1 (Violini 1) staves 39-40

VI. 2 (Violini 2) staves 41-42

Viol. (Violoncelli) staves 43-44

VI. (Violoni) staves 45-46

Contr. (Contrabbassi) staves 47-48

Dynamic markings: *ff*, *p*, *mf*, *mp*, *fz*, *tr*, *Pizz.*

64 67

Pn.

Arp.

Cor.

Fl. 1

Fl. 2

Ottav.

Ob.

Cl. 1-Sib.

Cl. 2-Sib.

Fag.

Corn. Fa

Tr. 1 Sib.

Tr. 2 Sib.

Tromb. Sib.

Tub.

Timp.

Tamb.

Piat.

Camp. Tub.

VI. 1 Lam Rem

VI. 2

VI. 2

Violonc.

VI. Pizz. Pizz.

Contr.

The musical score for page 22 of 'L'Tra di Rodipan' features a variety of instruments and vocal parts. The piano part is marked with *mf* and *f*. The harp part is marked with *mf*. The choir part is marked with *mf*. The flute parts are marked with *tr* and *mp*. The oboe part is marked with *tr*. The clarinet parts are marked with *tr* and *mp*. The bassoon part is marked with *tr* and *mp*. The horn parts are marked with *tr*. The trumpet parts are marked with *tr*. The trombone parts are marked with *tr*. The tuba part is marked with *tr*. The timpani part is marked with *tr*. The tambourine part is marked with *tr*. The percussion part is marked with *tr*. The cymbals part is marked with *tr*. The violin parts are marked with *Lam* and *f*. The viola part is marked with *f*. The contrabass part is marked with *Pizz.*

70 71 72

Pn.

Arp.

Choir

Fl. 1

Fl. 2

Ottav.

Ob.

Cl. 1-Sib.

Cl. 2-Sib.

Fag.

Com. Fa

Tr. 1 Sib.

Tr. 2 Sib.

Tromb. Sib.

Tub.

Timp.

Tamb.

Piat.

Camp. Tub.

VI. 1

VI. 2

VI. 2

Violonc.

VI.

Contr.

f

Pizz

72 74 76

Pn.

Arp.

Choir

Fl. 1

Fl. 2

Ottav.

Ob.

Cl. 1-Sib.

Cl. 2-Sib.

Fag.

Com. Fa

Tr. 1 Sib.

Tr. 2 Sib.

Tromb. Sib.

Tub.

Timp.

Tamb.

Piat.

Camp. Tub.

VI. 1

VI. 2

VI. 2

Violonc.

VI.

Contr.

This page of the musical score includes the following parts and their activities:

- Pn.** (Piano): Two staves, mostly silent with some rests.
- Harp**: Two staves, mostly silent.
- Choir**: Two staves, mostly silent.
- Fl. 1, Fl. 2, Ottav., Ob., Cl. 1-Sib., Cl. 2-Sib., Fag., Tr. 1 Sib., Tr. 2 Sib., Tromb. Sib., Tub., Timp., Tamb., Piat., Camp. Tub., VI. 1, VI. 2, VI. 2, Viol., Violonc., VI., Contr.**: Various woodwinds, brass, and strings. The Fagot and Tromba parts have some melodic lines with *tr* (trills) markings. The Violoncello part has *Pizz.* (pizzicato) markings.

Rehearsal marks 76, 77, and 78 are indicated at the top of the page.

