



Bernard Dewagtere

France, SIN LE NOBLE

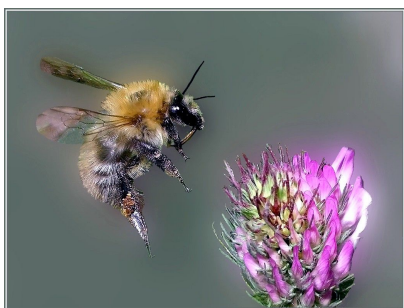
Le vol du bourdon Rimsky-Korsakov, Nikolai

A propos de l'artiste

Docteur en musicologie, chef d'orchestre et compositeur.
Compositions et arrangements de toutes époques, dans tous les styles ou genres musicaux et pour n'importe quelles formations instrumentales ou vocales.

Qualification : Docteur en Musicologie
Sociétaire : SACEM - Code IPI artiste : 342990
Page artiste : https://www.free-scores.com/partitions_gratuites_bernard-dewagtere.htm

A propos de la pièce



Titre : Le vol du bourdon
Compositeur : Rimsky-Korsakov, Nikolai
Arrangeur : Dewagtere, Bernard
Droit d'auteur : Copyright © Dewagtere, Bernard
Instrumentation : Flûte, hautbois, clarinette Bb, clarinette basse, 2 bassons
Style : Romantique
Commentaire : Le " Vol du bourdon " est un interlude orchestral écrit par Nikolaï Rimski-Korsakov pour son opéra 'Le Conte du tsar Saltan', composé en 1899-1900. La pièce se termine par l'acte III, Tableau 1, au cours de laquelle la magie du cygne transforme le prince Gvidon Saltanovich (le fils du Tsar) en insecte pour qu'il puisse s'envoler et visiter son père (qui ne sait pas volant).

Bernard Dewagtere sur [free-scores.com](https://www.free-scores.com)

LICENCE

Cette partition nécessite une autorisation :
- pour les représentations publiques
- pour l'utilisation par les professeurs

S'acquies de cette licence sur :

<https://www.free-scores.com/licence-partition.php?partition=40431>



- écouter l'audio
- partager votre interprétation
- commenter la partition
- s'acquies de la licence
- contacter l'artiste

Interdiction de diffusion sur d'autres sites Web.

Le vol du bourdon

Flight of the Bumblebee

Nikolai Rimsky-Korsakov (1900)

Transc. : Bernard Dewagtere

Vivace

Flûte

Hautbois

Clarinete en Sib

Clarinete Basse en Sib

Basson 1

Basson 2

sf

mf

sf

mf

sf

mf

sf

mf

sf

mf

4

Fl.

Hb.

Cl. (Sib)

Cl. B.

Bn. 1

Bn. 2

dim.

p

mf

mf

mf

mf

Le vol du bourdon

2
8

Fl.

Hb.

Cl. (Sib)

Cl. B.

Bn. 1

Bn. 2

mf

Detailed description: This musical score covers measures 2 through 8. The Flute (Fl.) part is mostly silent, with a few notes in measure 8. The Horn (Hb.) part features a continuous eighth-note pattern with a slur over measures 2-4, followed by a rest in measure 5 and a final note in measure 8. The Clarinet in B-flat (Cl. B.) part has a rhythmic pattern of eighth notes with rests, and a melodic phrase starting in measure 8 marked *mf*. The Bassoon 1 (Bn. 1) and Bassoon 2 (Bn. 2) parts provide a steady accompaniment with eighth notes and rests.

12

Fl.

Hb.

Cl. (Sib)

Cl. B.

Bn. 1

Bn. 2

Detailed description: This musical score covers measures 12 through 18. The Flute (Fl.) part is silent. The Horn (Hb.) part has a melodic line starting in measure 12, with a slur over measures 12-14 and a final melodic phrase in measure 18. The Clarinet in B-flat (Cl. B.) part has a complex melodic line with slurs over measures 12-14 and 15-17, ending with a rest in measure 18. The Bassoon 1 (Bn. 1) and Bassoon 2 (Bn. 2) parts continue with their accompaniment of eighth notes and rests.

Le vol du bourdon

16

Fl.

Hb.

Cl. (Sib)

Cl. B.

Bn. 1

Bn. 2

20

Fl.

Hb.

Cl. (Sib)

Cl. B.

Bn. 1

Bn. 2

p

p

Le vol du bourdon

4
25

Fl.

Hb.

Cl. (Sib)

Cl. B.

Bn. 1

Bn. 2

mp

mp

30

Fl.

Hb.

Cl. (Sib)

Cl. B.

Bn. 1

Bn. 2

p

mp

p

35

Fl.

Hb.

Cl. (Sib)

Cl. B.

mp

Bn. 1

Bn. 2

39

Fl.

Hb.

mf

Cl. (Sib)

Cl. B.

mf

Bn. 1

mf

Bn. 2

mf

Le vol du bourdon

6
43

Fl.
Hb.
Cl. (Sib)
Cl. B.
Bn. 1
Bn. 2

f
f

48

Fl.
Hb.
Cl. (Sib)
Cl. B.
Bn. 1
Bn. 2

mf
mf
mf
mp
mf

Le vol du bourdon

53

Fl.

Hb.

Cl. (Sib)

Cl. B.

Bn. 1

Bn. 2

mf

p

cresc.

58

Fl.

Hb.

Cl. (Sib)

Cl. B.

Bn. 1

Bn. 2

mf

mf

mf

Le vol du bourdon

8
62

Fl.
Hb.
Cl. (Sib)
Cl. B.
Bn. 1
Bn. 2

Detailed description: This system contains measures 8 through 11. The Flute (Fl.) part features a complex, melodic line with many accidentals, spanning across all four measures with a long slur. The Horns (Hb.) and Clarinet in B-flat (Cl. B.) parts are mostly silent, indicated by rests. The Clarinet in C (Cl. (Sib)) part has rests in measures 8 and 9, followed by a few notes in measures 10 and 11. The Bassoon 1 (Bn. 1) and Bassoon 2 (Bn. 2) parts play a rhythmic accompaniment of quarter notes and eighth notes.

66

Fl.
Hb.
Cl. (Sib)
Cl. B.
Bn. 1
Bn. 2

Detailed description: This system contains measures 66 through 69. The Flute (Fl.) part continues with its complex melodic line, including a key signature change to one flat (B-flat) in measure 68. The Horns (Hb.) part has rests in measures 66 and 67, followed by a few notes in measures 68 and 69. The Clarinet in B-flat (Cl. B.) and Bassoon 1 (Bn. 1) parts play a rhythmic accompaniment of quarter notes and eighth notes. The Clarinet in C (Cl. (Sib)) part has rests in measures 66 and 67, followed by a few notes in measures 68 and 69. The Bassoon 2 (Bn. 2) part plays a rhythmic accompaniment of quarter notes and eighth notes.

Le vol du bourdon

70

Fl.

Hb.

Cl. (Sib)

Cl. B.

Bn. 1

Bn. 2

74

Fl.

cresc.

f

Hb.

cresc.

f

Cl. (Sib)

cresc.

f

Cl. B.

cresc.

f

Bn. 1

f

Bn. 2

f

Le vol du bourdon

10
78

Fl.
Hb.
Cl. (Sib)
Cl. B.
Bn. 1
Bn. 2

mf
ff

82

Fl.
Hb.
Cl. (Sib)
Cl. B.
Bn. 1
Bn. 2

f
ff

Le vol du bourdon

87

Fl.

Hb.

Cl. (Sib)

Cl. B.

Bn. 1

Bn. 2

f *dim. poco a poco*

f *dim. poco a poco*

f *dim. poco a poco*

f *dim. poco a poco*

11

91

Fl.

Hb.

Cl. (Sib)

Cl. B.

Bn. 1

Bn. 2

f *mf*

mf

mp

mp

Le vol du bourdon

12
96

Fl. *dim.*

Hb. *mf* *f*

Cl. (Sib) *f*

Cl. B. *f*

Bn. 1 *mf* *f*

Bn. 2 *mf* *f*

mf *f*

Detailed description: This block contains the first system of a musical score, covering measures 96 to 100. It features seven staves: Flute (Fl.), Horn (Hb.), Clarinet in B-flat (Cl. B.), Clarinet in C (Cl. (Sib)), Bassoon 1 (Bn. 1), Bassoon 2 (Bn. 2), and a grand staff for the Bassoon 1 and 2 parts. The Flute part has a melodic line with a dynamic marking of *dim.* starting at measure 100. The Horn, Clarinet in B-flat, and Bassoon parts have a rhythmic accompaniment. Dynamics range from *mf* (mezzo-forte) to *f* (forte). A hairpin crescendo is shown under the Bassoon 1 and 2 parts.

100

Fl. *p* *pp*

Hb. *mp* *p* *p* *pp*

Cl. (Sib) *mp* *p* *p* *pp*

Cl. B. *mp* *pp*

Bn. 1 *mp* *p* *pp*

Bn. 2 *mp* *p* *pp*

mp *p* *pp*

Detailed description: This block contains the second system of the musical score, covering measures 100 to 104. It features the same seven staves as the first system. The Flute part continues with a melodic line, with dynamics of *p* (piano) and *pp* (pianissimo). The Horn, Clarinet in B-flat, and Bassoon parts continue with their rhythmic accompaniment. Dynamics range from *mp* (mezzo-piano) to *pp*. A hairpin decrescendo is shown under the Bassoon 1 and 2 parts.