



Bernard Dewagtere

France, SIN LE NOBLE

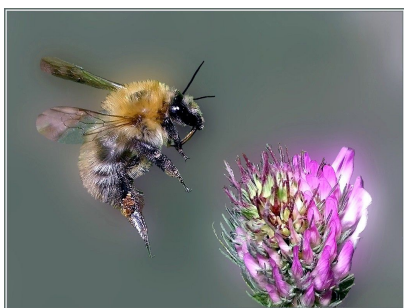
Le vol du bourdon Rimsky-Korsakov, Nikolai

A propos de l'artiste

Docteur en musicologie, chef d'orchestre et compositeur.
Compositions et arrangements de toutes époques, dans tous les styles ou genres musicaux et pour n'importe quelles formations instrumentales ou vocales.

Qualification : Docteur en Musicologie
Sociétaire : SACEM - Code IPI artiste : 342990
Page artiste : https://www.free-scores.com/partitions_gratuites_bernard-dewagtere.htm

A propos de la pièce



Titre : Le vol du bourdon
Compositeur : Rimsky-Korsakov, Nikolai
Arrangeur : Dewagtere, Bernard
Droit d'auteur : Copyright © Dewagtere, Bernard
Instrumentation : Accordéon, piano et/ou orgue
Style : Romantique
Commentaire : Le " Vol du bourdon " est un interlude orchestral écrit par Nikolaï Rimski-Korsakov pour son opéra 'Le Conte du tsar Saltan', composé en 1899-1900. La pièce se termine par l'acte III, Tableau 1, au cours de laquelle la magie du cygne transforme le prince Gvidon Saltanovich (le fils du Tsar) en insecte pour qu'il puisse s'envoler et visiter son père (qui ne sait pas vivant).

Bernard Dewagtere sur [free-scores.com](https://www.free-scores.com)

LICENCE

Cette partition nécessite une autorisation :
- pour les représentations publiques
- pour l'utilisation par les professeurs

S'acquies de cette licence sur :

<https://www.free-scores.com/licence-partition.php?partition=40098>



- écouter l'audio
- partager votre interprétation
- commenter la partition
- s'acquies de la licence
- contacter l'artiste

Interdiction de diffusion sur d'autres sites Web.

Le vol du bourdon

Flight of the Bumblebee

Nikolai Rimsky-Korsakov (1900)

Transc. : Bernard Dewagtere

Vivace

Accordeon

Piano

Musical score for Accordeon and Piano, measures 1-4. The Accordeon part features a melodic line with dynamics *sf*, *mf*, and *dim.* The Piano part provides harmonic support with chords and single notes.

Pno

Musical score for Piano, measures 5-8. The right hand has a melodic line with dynamics *p* and *mf*. The left hand has a bass line with chords and single notes.

Pno

Musical score for Piano, measures 9-12. The right hand has a melodic line with a slur. The left hand has a bass line with chords and single notes.

Le vol du bourdon

2
13

Pno

17

Pno

21

Pno

25

Pno

Le vol du bourdon

29

Piano score for measures 29-32. The treble clef part features a melodic line with quarter notes, half notes, and quarter notes with accents. The bass clef part consists of eighth-note patterns with slurs and a piano (*p*) dynamic marking.

33

Piano score for measures 33-36. The treble clef part continues the melodic line with quarter notes, half notes, and quarter notes, some with slurs. The bass clef part features eighth-note patterns with slurs.

37

Piano score for measures 37-40. The treble clef part has quarter notes, half notes, and quarter notes with slurs. The bass clef part includes eighth-note patterns with slurs and chords.

41

Piano score for measures 41-44. The treble clef part features eighth-note patterns with slurs. The bass clef part consists of chords and quarter notes.

Le vol du bourdon

4
45

Pno

49

Pno

mf

pp

mf

53

Pno

57

Pno

p

cresc.

mf

61

Piano score for measures 61-64. The right hand features a melodic line with a slur over measures 61-64. The left hand consists of a bass line with chords and single notes.

65

Piano score for measures 65-68. The right hand continues the melodic line with a slur over measures 65-68. The left hand continues with chords and single notes.

69

Piano score for measures 69-72. The right hand continues the melodic line with a slur over measures 69-72. The left hand continues with chords and single notes.

73

Piano score for measures 73-76. The right hand continues the melodic line with a slur over measures 73-76. The left hand continues with chords and single notes. Dynamic markings include *cresc.* and *f*.

Le vol du bourdon

6
77

Pno

81

Pno

85

Pno

89

f *dim. poco a poco*

Pno

Le vol du bourdon

93

Pno

97

Pno

101

Pno