



Bernard Dewagtere

France, SIN LE NOBLE

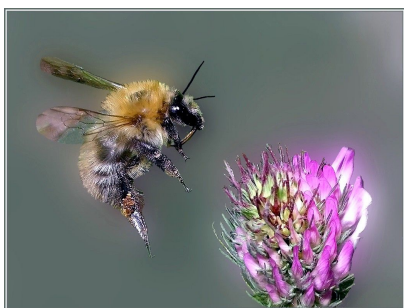
Le vol du bourdon Rimsky-Korsakov, Nikolai

A propos de l'artiste

Docteur en musicologie, chef d'orchestre et compositeur.
Compositions et arrangements de toutes époques, dans tous les styles ou genres musicaux et pour n'importe quelles formations instrumentales ou vocales.

Qualification : Docteur en Musicologie
Sociétaire : SACEM - Code IPI artiste : 342990
Page artiste : https://www.free-scores.com/partitions_gratuites_bernard-dewagtere.htm

A propos de la pièce



Titre : Le vol du bourdon
Compositeur : Rimsky-Korsakov, Nikolai
Arrangeur : Dewagtere, Bernard
Droit d'auteur : Copyright © Dewagtere, Bernard
Instrumentation : Hautbois, Piano (clavier)
Style : Romantique
Commentaire : Le " Vol du bourdon " est un interlude orchestral écrit par Nikolaï Rimski-Korsakov pour son opéra 'Le Conte du tsar Saltan', composé en 1899-1900. La pièce se termine par l'acte III, Tableau 1, au cours de laquelle la magie du cygne transforme le prince Gvidon Saltanovich (le fils du Tsar) en insecte pour qu'il puisse s'envoler et visiter son père (qui ne sait pas vivant).

Bernard Dewagtere sur [free-scores.com](https://www.free-scores.com)

LICENCE

Cette partition nécessite une autorisation :
- pour les représentations publiques
- pour l'utilisation par les professeurs

S'acquies de cette licence sur :

<https://www.free-scores.com/licence-partition.php?partition=40092>



- écouter l'audio
- partager votre interprétation
- commenter la partition
- s'acquies de la licence
- contacter l'artiste

Interdiction de diffusion sur d'autres sites Web.

Le vol du bourdon

Flight of the Bumblebee

Nikolai Rimsky-Korsakov (1900)

Transc. : Bernard Dewagtere

Vivace

Oboe

Piano

sf *mf* *dim.*

Detailed description: This system shows the first four measures of the piece. The Oboe part is written in a single treble clef staff with a 2/4 time signature. It features a continuous eighth-note pattern with a melodic line that rises and then falls. The Piano accompaniment consists of two staves (treble and bass clef) with block chords in the right hand and single notes in the left hand. Dynamic markings include *sf* (sforzando) at the start, *mf* (mezzo-forte) at measure 3, and *dim.* (diminuendo) at the end of measure 4.

5

Ob.

Pno

p *mf*

Detailed description: This system covers measures 5 through 8. The Oboe part continues with the eighth-note pattern, marked with a *p* (piano) dynamic at measure 5 and *mf* at measure 7. The Piano accompaniment continues with block chords and single notes. Measure numbers 5, 6, 7, and 8 are indicated at the beginning of their respective staves.

9

Ob.

Pno

Detailed description: This system covers measures 9 through 12. The Oboe part continues with the eighth-note pattern. The Piano accompaniment continues with block chords and single notes. Measure numbers 9, 10, 11, and 12 are indicated at the beginning of their respective staves.

Le vol du bourdon

2
13

Ob.

Pno

17

Ob.

Pno

21

Ob.

Pno

p

25

Ob.

Pno

mp

Le vol du bourdon

29

Ob.

Pno

p

Detailed description: This system covers measures 29 to 32. The Oboe part (Ob.) begins with a melodic line in measure 29, followed by a rest in measure 30, and then continues with a melodic phrase in measures 31 and 32. The Piano part (Pno) features a complex rhythmic accompaniment with sixteenth-note patterns in the right hand and sustained chords in the left hand. A dynamic marking of *p* (piano) is present in measure 31. Hairpins indicating crescendo and decrescendo are used in measures 29 and 32.

33

Ob.

Pno

Detailed description: This system covers measures 33 to 36. The Oboe part (Ob.) has a melodic line with a slur over measures 33 and 34, and continues in measures 35 and 36. The Piano part (Pno) continues with its rhythmic accompaniment, featuring sixteenth-note patterns in the right hand and sustained chords in the left hand. Hairpins indicating crescendo and decrescendo are used in measure 33.

37

Ob.

Pno

Detailed description: This system covers measures 37 to 40. The Oboe part (Ob.) has a melodic line with a slur over measures 37 and 38, and continues with a more active melodic line in measures 39 and 40. The Piano part (Pno) continues with its rhythmic accompaniment, featuring sixteenth-note patterns in the right hand and sustained chords in the left hand. Hairpins indicating crescendo and decrescendo are used in measures 37 and 38.

41

Ob.

Pno

Detailed description: This system covers measures 41 to 44. The Oboe part (Ob.) has a melodic line with a slur over measures 41 and 42, and continues with a more active melodic line in measures 43 and 44. The Piano part (Pno) continues with its rhythmic accompaniment, featuring sixteenth-note patterns in the right hand and sustained chords in the left hand.

Le vol du bourdon

4
45

Ob.

Pno

49

Ob.

mf

Pno

pp

mf

53

Ob.

Pno

57

Ob.

p

mf

Pno

cresc.

Le vol du bourdon

61

Ob.

Pno

Detailed description: This system covers measures 61 to 64. The Oboe part features a continuous eighth-note pattern with a slur over the first two measures and another slur over the last two. The Piano accompaniment consists of chords in the right hand and single notes in the left hand, with a slur over the first two measures and another slur over the last two.

65

Ob.

Pno

Detailed description: This system covers measures 65 to 68. The Oboe part continues with the eighth-note pattern, including a flat (b) in the final measure. The Piano accompaniment continues with chords and single notes, maintaining the same rhythmic structure as the previous system.

69

Ob.

Pno

Detailed description: This system covers measures 69 to 72. The Oboe part continues with the eighth-note pattern, including a flat (b) in the second measure of the system. The Piano accompaniment continues with chords and single notes.

73

Ob.

cresc. *f*

Pno

cresc. *f*

Detailed description: This system covers measures 73 to 76. The Oboe part continues with the eighth-note pattern, including a flat (b) in the second measure. The Piano accompaniment continues with chords and single notes. Dynamic markings 'cresc.' and 'f' are present in both parts.

Le vol du bourdon

6
77

Ob.

Pno

mf

81

Ob.

Pno

85

Ob.

Pno

89

Ob.

Pno

f *dim. poco a poco*

Le vol du bourdon

93

Ob.

Pno

97

Ob.

Pno

mf

dim.

101

Ob.

Pno

p

pp