



Bernard Dewagtere

France, SIN LE NOBLE

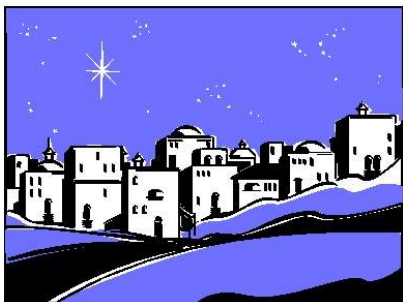
O Little Town of Bethlehem Redner, Lewis H.

A propos de l'artiste

Docteur en musicologie, chef d'orchestre et compositeur.
Compositions et arrangements de toutes époques, dans tous les styles ou genres musicaux et pour n'importe quelles formations instrumentales ou vocales.

Qualification : Docteur en Musicologie
Sociétaire : SACEM - Code IPI artiste : 342990
Page artiste : https://www.free-scores.com/partitions_gratuites_bernard-dewagtere.htm

A propos de la pièce



Titre : O Little Town of Bethlehem
Compositeur : Redner, Lewis H.
Arrangeur : Dewagtere, Bernard
Droit d'auteur : Copyright © Bernard Dewagtere
Editeur : Dewagtere, Bernard
Instrumentation : Choeur SAT, Piano
Style : Noel

Bernard Dewagtere sur [free-scores.com](https://www.free-scores.com)

LICENCE

Cette partition nécessite une autorisation :
- pour les représentations publiques
- pour l'utilisation par les professeurs

S'acquies de cette licence sur :

<https://www.free-scores.com/licence?p=adOcWWomAv>



- écouter l'audio
- partager votre interprétation
- commenter la partition
- s'acquies de la licence
- contacter l'artiste

Interdiction de diffusion sur d'autres sites Web.

O Little Town of Bethlehem

Lewis H. Redner (1831-1908)

Arr. : Bernard Dewagtere

Moderatly

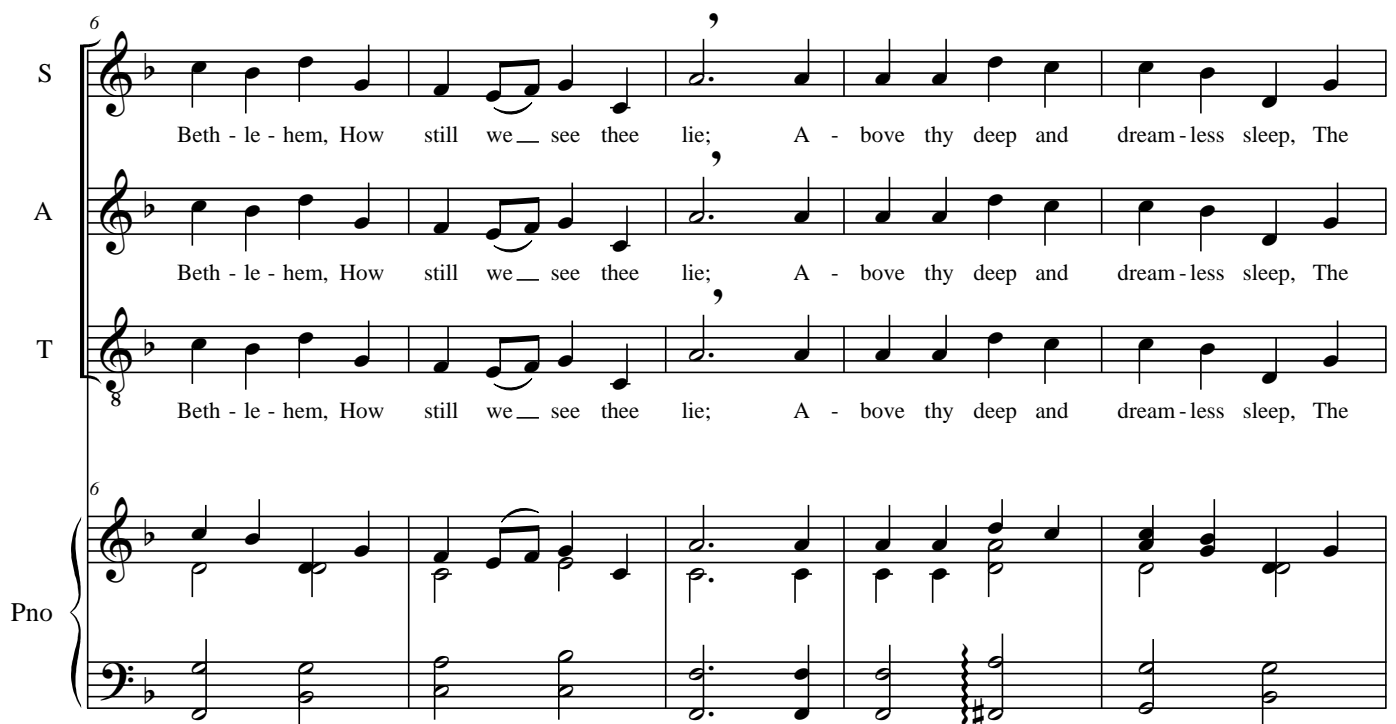


Soprano *p* O lit - tle town of

Alto *p* O lit - tle town of

Ténor *p* O lit - tle town of

Piano *p*



S Beth - le - hem, How still we see thee lie; A - bove thy deep and dream - less sleep, The

A Beth - le - hem, How still we see thee lie; A - bove thy deep and dream - less sleep, The

T Beth - le - hem, How still we see thee lie; A - bove thy deep and dream - less sleep, The

Pno

©2017Dewagtere

O Little Town of Bethlehem

2
11

S
si - lent — strars go by. *mp* Yet in thy dark streets shin - eth The e - ver - last - ing

A
si - lent — strars go by. *mp* Yet in thy dark streets shin - eth The e - ver - last - ing

T
si - lent — strars go by. *mp* Yet in thy dark streets shin - eth The e - ver - last - ing

Pno
11
mp

16

S
Light; The hopes and fears of all the years Are met in thee to - night.

A
Light; The hopes and fears of all the years Are met in thee to - night. - -

T
Light; The hopes and fears of all the years Are met in thee to - night.

Pno
16
p

O Little Town of Bethlehem

21

S

mf For Christ is born of Ma— ry, And

A

T

8

Pno

21

mp

27

S

ga - ther'd__ all a - bove, While mor - tals sleep, the an - gels keep Their watch of __wond'-ring

A

T

8

Pno

27

O Little Town of Bethlehem

4
32

S
love. O morn-ing stars to - ge - ther Pro - claim the ho - ly birth, And prai-ses sing to

A
pp bocca chiusa

T
8
pp bocca chiusa

Pno
32
mp

S
38
God the King And peace to men on earth.

A

T
8

Pno
38
p

O Little Town of Bethlehem

44

S *mf* O ho - ly Child of Beth - le - hem, De - scend to__ us, we pray; Cast

A *mf* O - - ho --ly Child of - Beth - le - hem, De - scend to__ -us, we pray; - Cast

T *mf* O ho - ly Child of Beth - le - hem, De - scend to__ us, we pray; Cast

8

Pno *mf*

49

S out our sin and en - ter in; Be born to__ us to - day. *mp* We hear the Crist-mas an - gels, The

A - out our sin and en - ter in; Be - born-to__ us to - day. *mp* We hear the Crist-mas an - gels, The

T out our sin and en - ter in; Be born to__ us to - day. *mp* We hear the Crist-mas an - gels, The

8

Pno *mp*

O Little Town of Bethlehem

6
55

S
great glad ti-dings tell; *cresc.* O come to us, a - bide with us, Our Lord Em-ma - nu - el, O

A
- great glad ti-dings - tell; *cresc.* O come to us, a -- bide-with us, Our - Lord Em-ma-nu -- el, - O

T
great glad ti-dings tell; *cresc.* O come to us, a - bide with us, Our Lord Em-ma-nu - el, O

8

Pno
55
cresc.

61

S
come to us, a - bide with us, Our *f* Lord Em - ma - nu - el.

A
- come - to us, a - - bidewith us, Our *f* Lord Em - ma - nu - el.

T
come to us, a - bide with us, Our *f* Lord Em - ma - nu - el.

8

Pno
61
f