



Bernard Dewagtere

France, SIN LE NOBLE

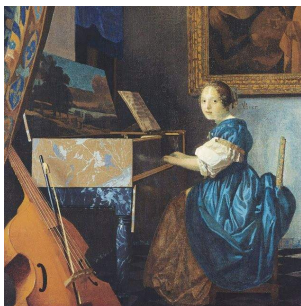
Menuet en La mineur Purcell, Henry

A propos de l'artiste

Docteur en musicologie, chef d'orchestre et compositeur.
Compositions et arrangements de toutes époques, dans tous les styles ou genres musicaux et pour n'importe quelles formations instrumentales ou vocales.

Qualification : Docteur en Musicologie
Sociétaire : SACEM - Code IPI artiste : 342990
Page artiste : https://www.free-scores.com/partitions_gratuites_bernard-dewagtere.htm

A propos de la pièce



Titre : Menuet en La mineur
Compositeur : Purcell, Henry
Arrangeur : Dewagtere, Bernard
Droit d'auteur : Copyright © Bernard Dewagtere
Editeur : Dewagtere, Bernard
Instrumentation : Harpe
Style : Baroque

Bernard Dewagtere sur [free-scores.com](https://www.free-scores.com)

LICENCE

Cette partition nécessite une autorisation :
- pour les représentations publiques
- pour l'utilisation par les professeurs

S'acquitter de cette licence sur :

<https://www.free-scores.com/licence?p=aRsLdYUTh>



- écouter l'audio
- partager votre interprétation
- commenter la partition
- s'acquitter de la licence
- contacter l'artiste

Interdiction de diffusion sur d'autres sites Web.

Menuet en La mineur

Henry Purcell (1659-1695)

Transc. : Bernard Dewagtere

Harpe

The first system of the Minuet in G minor, measures 1-5. The music is in 3/4 time. The treble clef staff contains a melodic line starting with a quarter note G4, followed by eighth notes A4, B4, and C5, then a quarter note B4, eighth notes A4 and G4, a quarter note F4, eighth notes E4 and D4, a quarter note C4, eighth notes B3 and A3, and a quarter note G3. The bass clef staff contains a harmonic accompaniment of chords: G3-B3-D4, G3-B3-D4, G3-B3-D4, G3-B3-D4, and G3-B3-D4.

The second system of the Minuet in G minor, measures 6-10. Measure 6 continues the melodic line from measure 5. Measures 7 and 8 are identical to measures 6 and 7. Measure 9 is the first ending, marked '1.', and measure 10 is the second ending, marked '2.'. The first ending leads back to the beginning of the piece, while the second ending leads to the final cadence.

The third system of the Minuet in G minor, measures 11-15. Measure 11 begins with a trill on G4, followed by eighth notes A4 and B4, a quarter note C5, eighth notes B4 and A4, a quarter note G4, eighth notes F4 and E4, a quarter note D4, eighth notes C4 and B3, and a quarter note A3. Measure 12 continues the melodic line. Measure 13 is the first ending, marked '1.', and measure 14 is the second ending, marked '2.'. The first ending leads back to the beginning of the piece, while the second ending leads to the final cadence.

The fourth system of the Minuet in G minor, measures 16-20. Measure 16 continues the melodic line from measure 15. Measure 17 is the first ending, marked '1.', and measure 18 is the second ending, marked '2.'. The first ending leads back to the beginning of the piece, while the second ending leads to the final cadence.