



# Bernard Dewagtere

France, SIN LE NOBLE

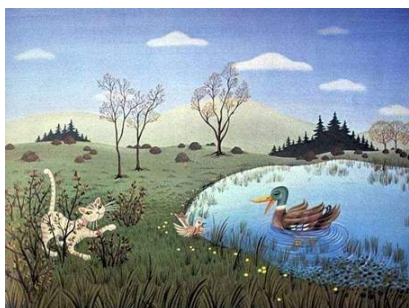
## Pierre et le loup – 4. Le chat (Op. 67) Prokofiev, Sergei

### A propos de l'artiste

Docteur en musicologie, chef d'orchestre et compositeur.  
Compositions et arrangements de toutes époques, dans tous les styles ou genres musicaux et pour n'importe quelles formations instrumentales ou vocales.

**Qualification :** Docteur en Musicologie  
**Sociétaire :** SACEM - Code IPI artiste : 342990  
**Page artiste :** [https://www.free-scores.com/partitions\\_gratuites\\_bernard-dewagtere.htm](https://www.free-scores.com/partitions_gratuites_bernard-dewagtere.htm)

### A propos de la pièce



**Titre :** Pierre et le loup – 4. Le chat [Op. 67]  
**Compositeur :** Prokofiev, Sergei  
**Arrangeur :** Dewagtere, Bernard  
**Droit d'auteur :** Copyright © Bernard Dewagtere  
**Editeur :** Dewagtere, Bernard  
**Instrumentation :** Alto et Piano (ou orgue)  
**Style :** 20eme siecle

### Bernard Dewagtere sur [free-scores.com](https://www.free-scores.com)

#### LICENCE

Cette partition nécessite une autorisation :

- pour les représentations publiques
- pour l'utilisation par les professeurs

**S'acquies de cette licence sur :**

<https://www.free-scores.com/licence?p=aJHS8u05S5>



- écouter l'audio
- partager votre interprétation
- commenter la partition
- s'acquies de la licence
- contacter l'artiste

Interdiction de diffusion sur d'autres sites Web.

# Peter and the Wolf (Op. 67)

## 4. The Cat

Sergei Prokofiev (1936)

Transc. : B. Dewagtere

Moderato

*con eleganza*

Viola

Piano

pp

secco

f

p

f

p

*con eleganza*

*p*

*con eleganza*

Detailed description: This system shows the first four measures of the piece. The Viola part is in a 3/4 time signature, starting with a whole rest in the first measure, followed by a half rest, and then a quarter note G4 in the third measure, and a quarter note A4 in the fourth measure. The Piano part is in a 3/4 time signature. The right hand starts with a half note chord of G4 and B4 in the first measure, followed by a half note chord of G4 and B4 in the second measure, and then a half note chord of G4 and B4 in the third measure, and a half note chord of G4 and B4 in the fourth measure. The left hand starts with a half note chord of G4 and B4 in the first measure, followed by a half note chord of G4 and B4 in the second measure, and then a half note chord of G4 and B4 in the third measure, and a half note chord of G4 and B4 in the fourth measure. Dynamics include pp, secco, f, p, and f.

Vla.

Detailed description: This system shows measures 5-8. The Viola part starts with a half note G4 in measure 5, followed by a quarter note A4 in measure 6, a quarter note B4 in measure 7, and a quarter note G4 in measure 8. The Piano part continues with the same chords as in the previous system. Dynamics include f.

Vla.

espress.

f

Detailed description: This system shows measures 9-12. The Viola part starts with a half note G4 in measure 9, followed by a quarter note A4 in measure 10, a quarter note B4 in measure 11, and a quarter note G4 in measure 12. The Piano part continues with the same chords as in the previous system. Dynamics include espress. and f.

Peter and the Wolf (Op. 67)

2  
13

Vla.

*mp*

*p*

*pp*

*mp*

17

Vla.

*mf*

*mf*

21

Vla.

*8va f*

*f*

Vla. 25

(*8va*)

*f*

Vla. 29

*mf*

*mp*

Vla. 33

*mf*

Vla. 37

*8vb*