



Serban Nichifor

Compositeur, Interprete, Professeur

Roumanie, Bucarest

A propos de l'artiste

http://www.voxnovus.com/composer/Serban_Nichifor.htm

Qualification : PROFESSEUR DOCTEUR EN COMPOSITION ET MUSICOLOGIE

Sociétaire : SABAM - Code IPI artiste : I-000391194-0

Page artiste : www.free-scores.com/partitions_gratuites_serbannichifor.htm

A propos de la pièce



Titre : SARMIZEGETUSA

Compositeur : Nichifor, Serban

Licence : Copyright © Serban Nichifor

Editeur : Nichifor, Serban

Style : Classique moderne

Serban Nichifor sur free-scores.com



- écouter l'audio
- partager votre interprétation
- commenter la partition
- contacter l'artiste

To My Eternal Motherland ROMANIA

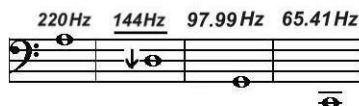
SARMIZEGETUSA

for Cello and Tape

(Signals V)

Tunings used :

Harmonics 1-12 of the strings A, D, G and C
in scordatura



Duration: ca 5'

Cello (ca 10-15")

Tape

Serban Nichifor

1.) Parlando Rubato
Sempre Harmonics Sul Do (C)

$\text{♩} = 40$ *ppp* *sul ponticello* *al ord.* *Sempre Glissando on Harmonics*

Glissando

Glissando *sul ponticello* *al ord.* *Pizz.* *ppp* *fff* *fz*

2.) Subito Allegro Giocoso

$\text{♩} = 140$ + CLB + CLB + CLB + CLB simile
mf Pizz (+) / Col Legno Battuto

8 Arco Sul La (A) Sul Re (D)

8 Loco + CLB + CLB simile
Pizz (+) / Col Legno Battuto

8 Arco Sul La (A) Sul Re (D)

8 Loco + CLB + CLB simile
Pizz (+) / Col Legno Battuto

Sul Sol (G)

Sul Do (C)

3.) Parlando Rubato
Sempre Harmonics Sul Do (C)

Sempre Glissando
on Harmonics

$\text{♩} = 40$

mp lontano

The first staff of music is in 3/4 time with a tempo marking of quarter note = 40. It begins with a mezzo-piano (*mp*) dynamic and a 'lontano' (slowly) marking. The melody consists of a series of chords and single notes, many of which are marked with a circle to indicate harmonics. The piece concludes with a glissando on the harmonics, indicated by a wavy line and an upward-pointing arrow.

The second staff continues the musical piece, featuring a series of chords and notes, some with harmonic circles. It ends with a double bar line. Below the staff, there are two horizontal lines, likely indicating a page break or a specific performance instruction.

Noember. 29, 2014