



fabrice lucato

France, saint pourçain sur sioule

Françoise (quatuor cordes)

A propos de l'artiste

Fabrice Lucato, compositeur et arrangeur. Titulaire d'un DEM Jazz, d'un DEM saxophone classique, d'un DEM musique de chambre, du DE professeur de saxophone.

Professeur de saxophone à Saint-Pourçain sur Sioule et Bessay sur Allier.

Si vous souhaitez des arrangements, n'hésitez pas à me contacter sur mon mail :fabrice.lucato@wanadoo.fr

Qualification : DEM saxophone Jazz
DEM saxophone classique
DEM Musique de Chambre
DE de saxophone classique

Sociétaire : SACEM - Code IPI artiste : 151998734

Page artiste : https://www.free-scores.com/partitions_gratuites_lucato.htm

A propos de la pièce



Titre : Françoise
[quatuor cordes]

Compositeur : lucato, fabrice

Droit d'auteur : Copyright © fabrice lucato

Instrumentation : Violon, Alto, Violoncelle, Contrebasse

Style : Rock Classique

fabrice lucato sur [free-scores.com](https://www.free-scores.com)



Cette partition ne fait pas partie du domaine public. Merci de contacter l'artiste pour toute utilisation hors du cadre privé.



- écouter l'audio
- partager votre interprétation
- commenter la partition
- contacter l'artiste

Swing
3mn17

Françoise (à Françoise Ramillon)

Fabrice Lucato

♩ = 120

Violon

Alto

Violoncelle

Contrebasse

p *f* *mf* *p* *f* *p*

Vl.

Alt.

Vlc.

Cb.

mf *f* *mf* *mf*

Françoise

2
18

VI.

Alt.

Vlc.

Cb.

18

mp

mp

mp

mp

26

VI.

Alt.

Vlc.

Cb.

26

BINAIRE

mp

mp

f

mp

35

VI.
Alt.
Vlc.
Cb.

This system contains measures 35 through 42. The Violin I (VI.) and Alto (Alt.) parts feature long, sustained notes with a slur over the first two measures. The Violoncello (Vlc.) part has a rhythmic pattern of eighth notes with triplets in measures 36, 37, and 41. The Contrabass (Cb.) part has a similar rhythmic pattern of eighth notes with triplets in measures 36, 37, and 41. The key signature is one sharp (F#).

43

VI.
Alt.
Vlc.
Cb.

SWING

f SWING

f SWING

f SWING

f

This system contains measures 43 through 50. The Violin I (VI.) and Alto (Alt.) parts have a rhythmic pattern of eighth notes with triplets in measures 43, 44, and 45. The Violoncello (Vlc.) part has a rhythmic pattern of eighth notes with triplets in measures 43, 44, and 45. The Contrabass (Cb.) part has a rhythmic pattern of eighth notes with triplets in measures 43, 44, and 45. The key signature is one sharp (F#). The tempo/style marking "SWING" appears above the Violin I part in measure 49, and the dynamic marking "f" appears below the Violin I, Alto, and Violoncello parts in measure 49, and below the Contrabass part in measure 50.

Françoise
BINAIRE Solo ad lib

4
52

Vl. *ff* BINAIRE *p* Solo ad lib

Alt. *ff* BINAIRE *p* Solo ad lib

Vcl. *ff* BINAIRE *p* Solo ad lib

Cb. *ff* BINAIRE *p* Solo ad lib

SWING

60

Vl. SWING *mf*

Alt. SWING *p*

Vcl. SWING *p*

Cb. SWING *p*

Françoise

69

VI. *mf*

Alt. *f*

Vlc. *mf*

Cb. *mf*

Detailed description: This system of music covers measures 69 to 76. It features four staves: Violin I (VI.), Alto (Alt.), Violoncello (Vlc.), and Contrabasso (Cb.). The key signature is one sharp (F#) and the time signature is 3/4. The Violin I part has a melodic line with slurs and accents. The Alto part has a rhythmic accompaniment with slurs and accents. The Violoncello part has a similar rhythmic accompaniment. The Contrabasso part has a simple bass line. Dynamics are marked as *mf* for Violin I, *f* for Alto, *mf* for Violoncello, and *mf* for Contrabasso.

77

VI. *mp*

Alt. *mp*

Vlc. *mp*

Cb. *mp*

Detailed description: This system of music covers measures 77 to 84. It features the same four staves as the previous system. The Violin I part continues with a melodic line, now including a trill in measure 84. The Alto part continues with its rhythmic accompaniment. The Violoncello part continues with its rhythmic accompaniment. The Contrabasso part continues with its simple bass line. Dynamics are marked as *mp* for all parts.

Françoise

6
85

VI.

Alt.

Vlc.

Cb.

85

3

3

rit.

rit.

rit.

rit.

The image shows a page of musical notation for four instruments: Violin (VI.), Alto (Alt.), Viola (Vlc.), and Cello (Cb.). The score is in G major (one sharp) and 6/8 time. It begins at measure 85. The Violin part features a melodic line with eighth and sixteenth notes, including a triplet in measure 91. The Alto part provides a harmonic accompaniment with eighth notes and some sixteenth-note patterns. The Viola and Cello parts play a steady eighth-note accompaniment. The piece concludes with a 'rit.' (ritardando) marking in the final measure of each part.

Swing
3mn17

Françoise violon

Fabrice Lucato

♩ = 120

4

f *mf*

8

12

mf

16

20

mp

24

28

32 BINAIRE

mp

36

40

44

3

4

Françoise violon

BINAIRE

2 SWING

51 *f* *ff* 3 3 3

Solo ad lib

55 *p*

SWING

59

63 3

67 *mf*

71

75 *mf*

79

83 *mp* *rit.*

87 3

91

Swing
3mn17

Françoise

Alto

Fabrice Lucato

♩ = 120

5 *p*

9 *f* *p*

13

17 *f*

21 *mp*

25

29 3

33 BINAIRE

37 *mp*

41

Françoise alto

45

49 SWING

53 BINAIRE Solo ad lib

57

61 SWING

65

69

73

77 *f*

81 *mp*

85

89 *rit.*

Swing
3mn17

Françoise Violoncelle

Fabrice Lucato

♩ = 120

5 *p*

9 *f* *p*

13

17 *mf*

21 *mp*

25 3

29

33 BINAIRE

37 *f* 3

41 3

Françoise Violoncelle

45 *3*

49 SWING

53 BINAIRE Solo ad lib

57 *ff* *p*

61 SWING

65 *3*

69 *p*

73

77 *mf*

81

85 *mp* *3*

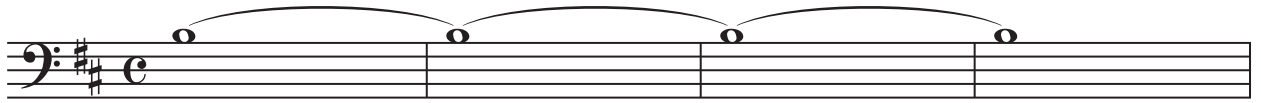
89 *rit.*

Swing
3mn17

Françoise Contrebasse

Fabrice Lucato

♩ = 120



Françoise contrebasse

2
45

49

53

57

61

65

69

73

77

81

85

89