



# Richard Kearns

Irlande, Ballybofey

## Around The House

### A propos de l'artiste

Due to loss of use of hands I will be unable to transpose, arrange or otherwise modify my music in here. Further compositions will be very very slow in appearing here.....Thanks for all the support.

Teachers and students may use my music and arrangements to study and practice without further adieu.....All public performances must seek permission first.

THANKS FOR THE DONATIONS.

They keep me going.

**Page artiste :** [https://www.free-scores.com/partitions\\_gratuites\\_guiriell.htm](https://www.free-scores.com/partitions_gratuites_guiriell.htm)

### A propos de la pièce



**Titre :** Around The House  
**Compositeur :** Kearns, Richard  
**Arrangeur :** Kearns, Richard  
**Droit d'auteur :** Copyright © Richard Kearns  
**Editeur :** Kearns, Richard  
**Instrumentation :** Cor, Orchestre  
**Style :** Classique

### Richard Kearns sur [free-scores.com](https://www.free-scores.com)



Cette partition ne fait pas partie du domaine public. Merci de contacter l'artiste pour toute utilisation hors du cadre privé.



- écouter l'audio
- partager votre interprétation
- commenter la partition
- contacter l'artiste

# Around The House

Richard Kearns  
Copyright 2010 Richard Karns

Con Ganas

1

1: Flute

2: Clarinet

3: Horns

4: Violins

5: Violas

6: Cellos

7: CBass

8: Bells

6

1: Flute

2: Clarinet

3: Horns

4: Violins

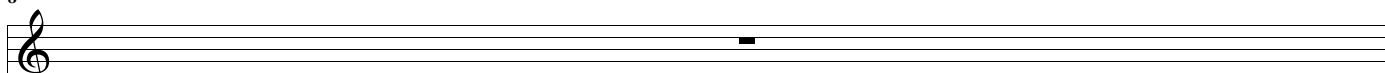
5: Violas

6: Cellos

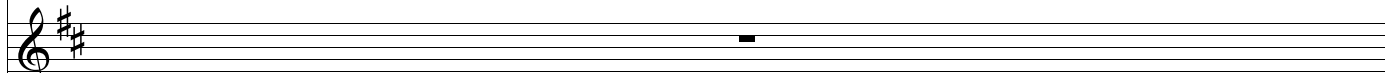
7: CBass

8: Bells

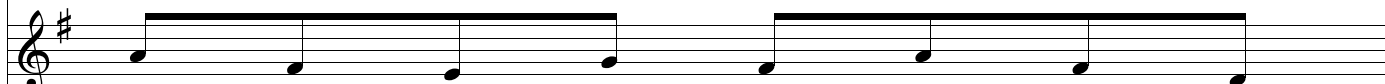
8



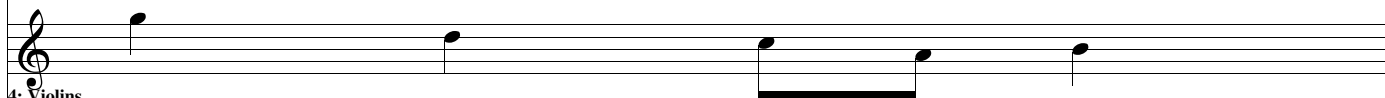
1: Flute



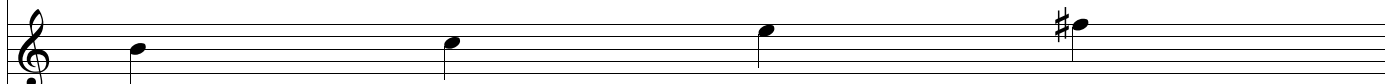
2: Clarinet



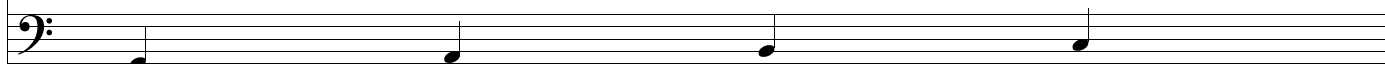
3: Horns



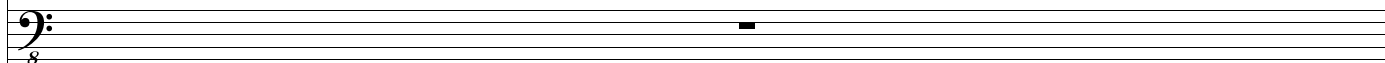
4: Violins



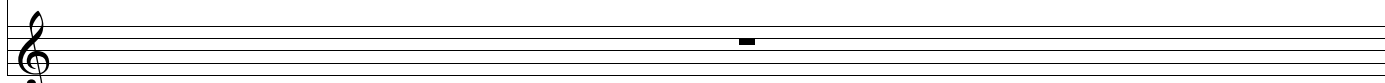
5: Violas



6: Cellos



7: CBass



8: Bells

9

1: Flute

2: Clarinet

3: Horns

4: Violins

5: Violas

6: Cellos

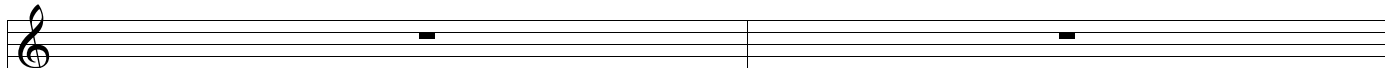
7: CBass

8: Bells

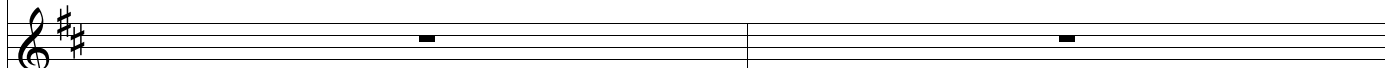
The musical score for page 4, measures 9-12, is arranged as follows:

- Flute (1):** Silent throughout the measures.
- Clarinet (2):** Silent throughout the measures.
- Horns (3):** Play a rhythmic pattern of eighth notes in a D major key signature. The pattern consists of a quarter note followed by eighth notes.
- Violins (4):** Play a melodic line starting on G4, moving to A4, B4, and C5, then descending to B4, A4, and G4.
- Violas (5):** Play a sustained note on G4.
- Cellos (6):** Play a melodic line starting on G2, moving to A2, B2, and C3, then descending to B2, A2, and G2.
- CBass (7):** Play a sustained note on G1.
- Bells (8):** Silent throughout the measures.

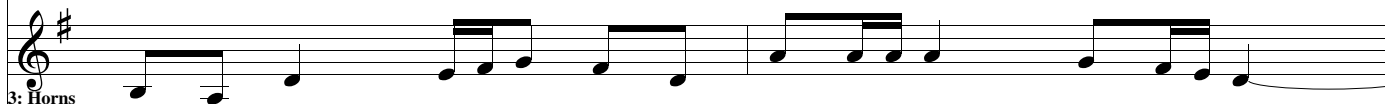
10



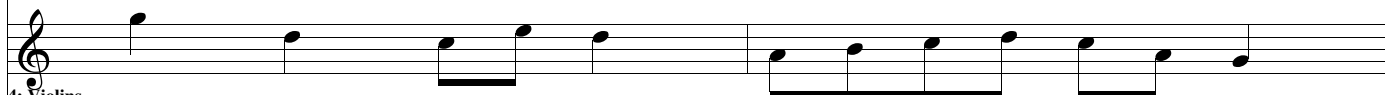
1: Flute



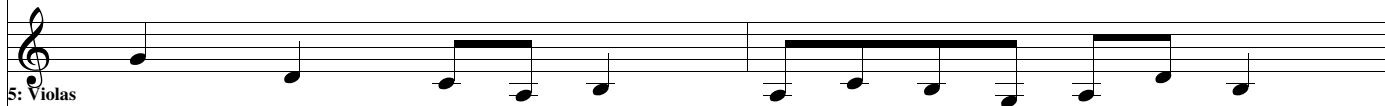
2: Clarinet



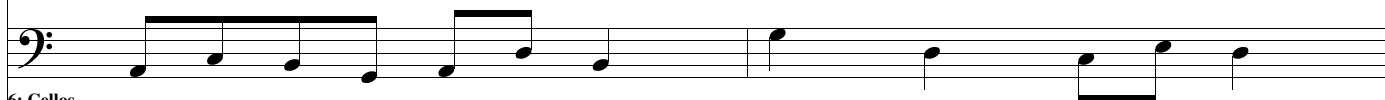
3: Horns



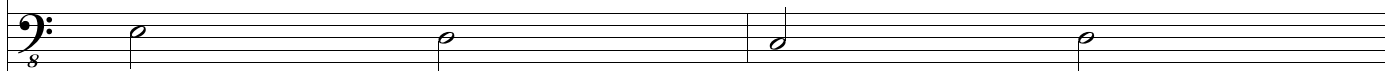
4: Violins



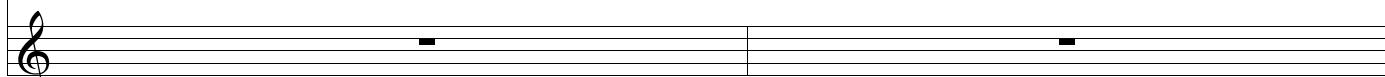
5: Violas



6: Cellos



7: CBass



8: Bells

12

1: Flute

2: Clarinet

3: Horns

4: Violins

5: Violas

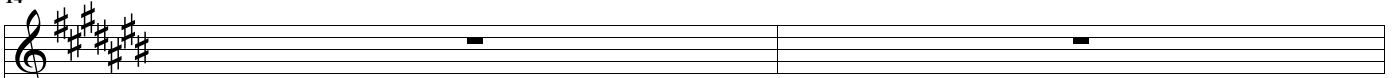
6: Cellos

7: CBass

8: Bells

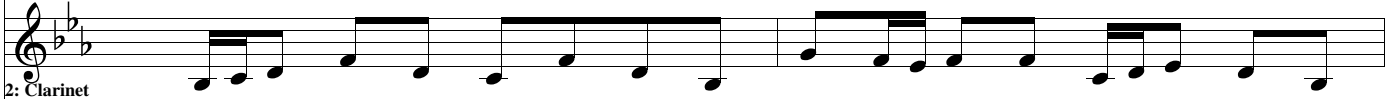
The image shows a page of a musical score, page 6, measures 12 and 13. The score is arranged in a vertical stack of eight staves, each representing a different instrument. The instruments are: 1: Flute, 2: Clarinet, 3: Horns, 4: Violins, 5: Violas, 6: Cellos, 7: CBass, and 8: Bells. The key signature is one sharp (F#) and the time signature is 4/4. Measure 12 shows the following: Flute and Clarinet have whole rests. Horns play a quarter note G4, followed by a beamed eighth-note pair (A4, B4), and a quarter note C5. Violins play a quarter note G4, a quarter note A4, and a half note B4. Violas play a quarter note G4, a quarter note A4, and a quarter note B4. Cellos play a quarter note G3, a quarter note A3, and a quarter note B3. CBass plays a half note G2. Bells have a whole rest. Measure 13 shows: Flute and Clarinet have whole rests. Horns have a whole rest. Violins play a half note B4. Violas play a beamed sixteenth-note pair (A4, G4), followed by a beamed sixteenth-note pair (F#4, E4), and a quarter note D4. Cellos play a quarter note G3, a quarter note A3, and a quarter note B3. CBass plays a half note G2. Bells have a whole rest.

14



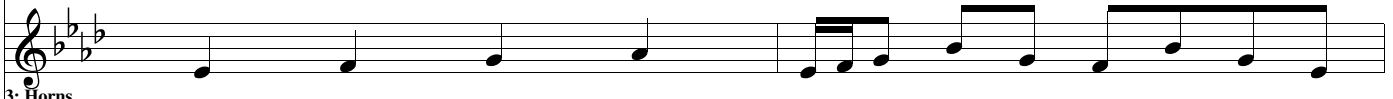
Musical staff for Flute 1, measure 14. The staff is in treble clef with a key signature of three sharps (F#, C#, G#). It contains a whole rest.

1: Flute



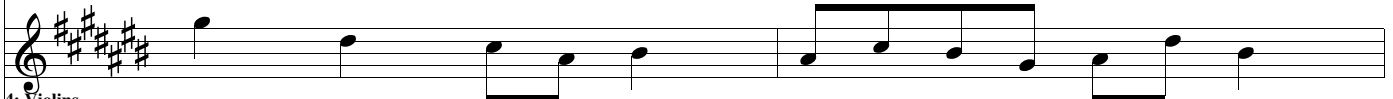
Musical staff for Clarinet 2, measure 14. The staff is in treble clef with a key signature of two flats (Bb, Eb). It contains a melodic line consisting of eighth and quarter notes.

2: Clarinet



Musical staff for Horns 3, measure 14. The staff is in treble clef with a key signature of two flats (Bb, Eb). It contains a melodic line consisting of quarter and eighth notes.

3: Horns



Musical staff for Violins 4, measure 14. The staff is in treble clef with a key signature of three sharps (F#, C#, G#). It contains a melodic line consisting of quarter and eighth notes.

4: Violins



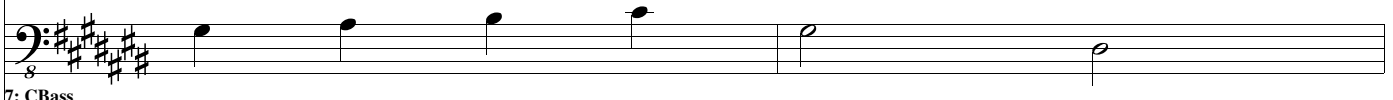
Musical staff for Violas 5, measure 14. The staff is in treble clef with a key signature of three sharps (F#, C#, G#). It contains a melodic line consisting of quarter and eighth notes, with a double sharp symbol (x) above the final note.

5: Violas



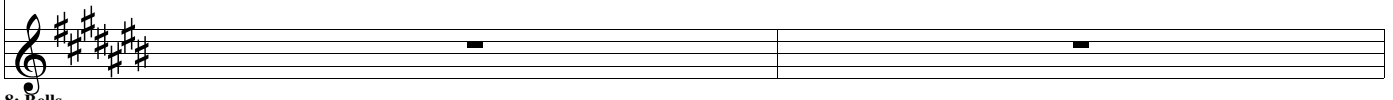
Musical staff for Cellos 6, measure 14. The staff is in bass clef with a key signature of three sharps (F#, C#, G#). It contains a melodic line consisting of quarter and eighth notes.

6: Cellos



Musical staff for CBass 7, measure 14. The staff is in bass clef with a key signature of three sharps (F#, C#, G#). It contains a melodic line consisting of quarter and eighth notes.

7: CBass



Musical staff for Bells 8, measure 14. The staff is in treble clef with a key signature of three sharps (F#, C#, G#). It contains a whole rest.

8: Bells



16

1: Flute

2: Clarinet

3: Horns

4: Violins

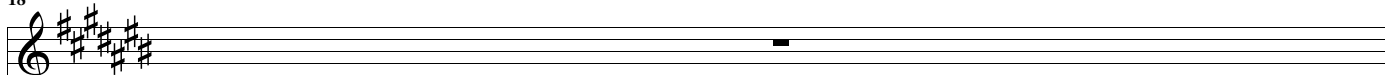
5: Violas

6: Cellos

7: CBass

8: Bells

18



1: Flute

Musical staff for Flute 1, showing a whole rest.



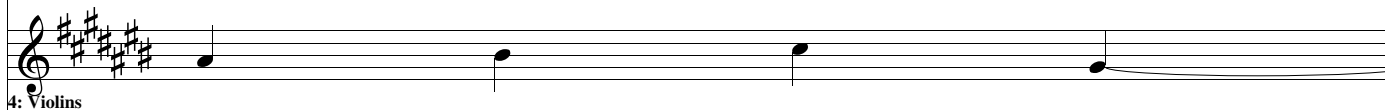
2: Clarinet

Musical staff for Clarinet 2, showing a melodic line in G major with a key signature of one flat.



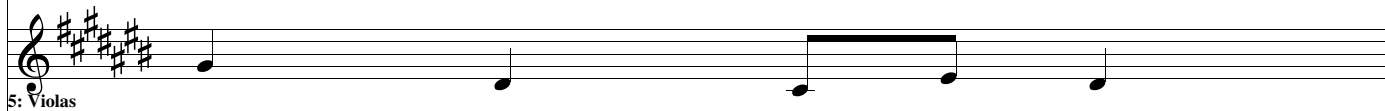
3: Horns

Musical staff for Horns 3, showing a rhythmic accompaniment of eighth notes.



4: Violins

Musical staff for Violins 4, showing a melodic line in G major with a key signature of one flat.



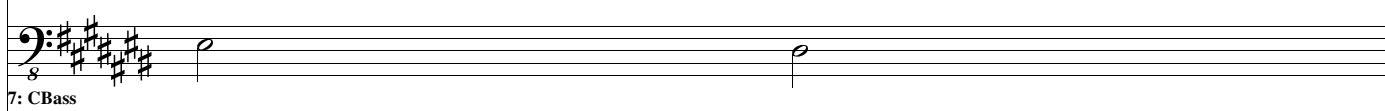
5: Violas

Musical staff for Violas 5, showing a melodic line in G major with a key signature of one flat.



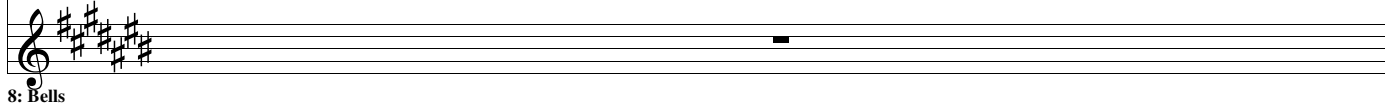
6: Cellos

Musical staff for Cellos 6, showing a melodic line in G major with a key signature of one flat.



7: CBass

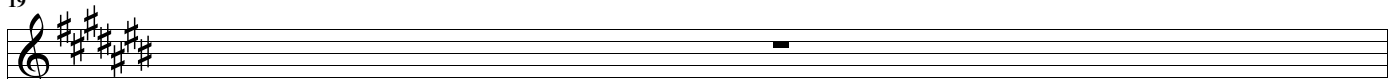
Musical staff for CBass 7, showing a bass line with an 8va marking.



8: Bells

Musical staff for Bells 8, showing a whole rest.

19



1: Flute

Musical staff for Flute 1, showing a whole rest in the key of D major.



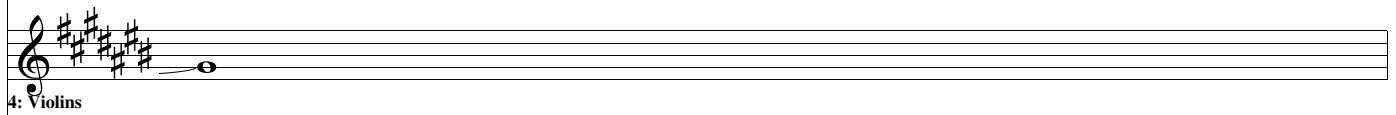
2: Clarinet

Musical staff for Clarinet, showing a melodic line in the key of B-flat major.



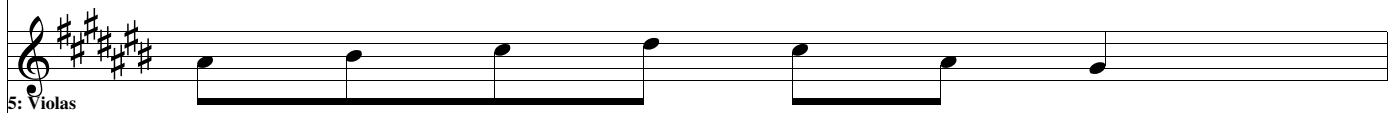
3: Horns

Musical staff for Horns, showing a melodic line in the key of B-flat major.



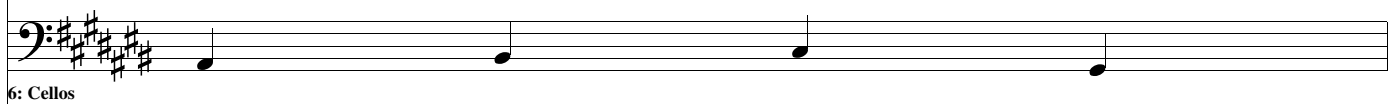
4: Violins

Musical staff for Violins, showing a whole rest in the key of D major.



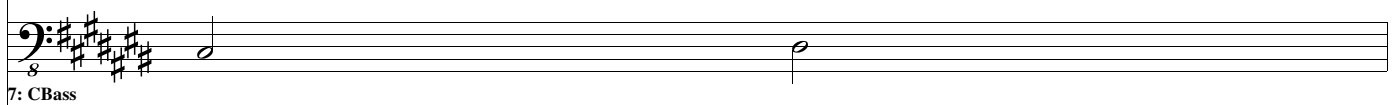
5: Violas

Musical staff for Violas, showing a melodic line in the key of D major.



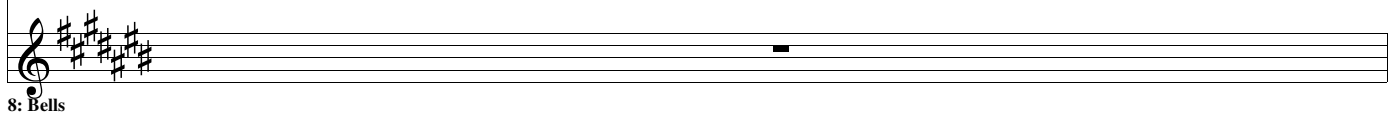
6: Cellos

Musical staff for Cellos, showing a melodic line in the key of D major.



7: CBass

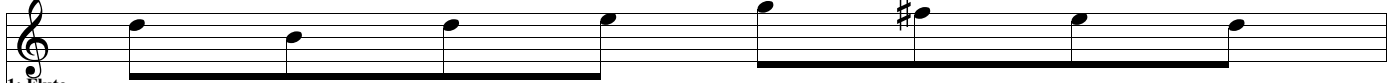
Musical staff for CBass, showing a melodic line in the key of D major.



8: Bells


Musical staff for Bells, showing a whole rest in the key of D major.

20



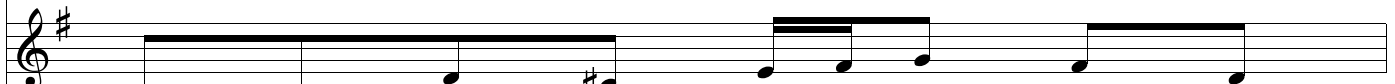
1: Flute

Musical staff for Flute 1, showing a melodic line with a sharp sign on the second measure.



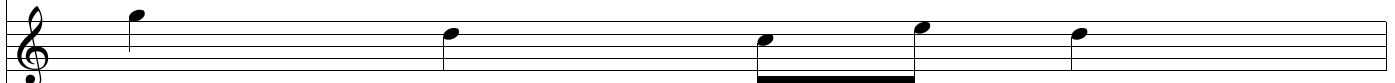
2: Clarinet

Musical staff for Clarinet 2, showing a rhythmic pattern of eighth notes.



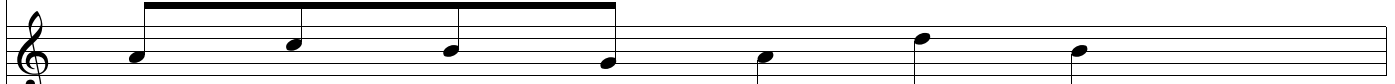
3: Horns

Musical staff for Horns 3, showing a melodic line with a sharp sign on the second measure.



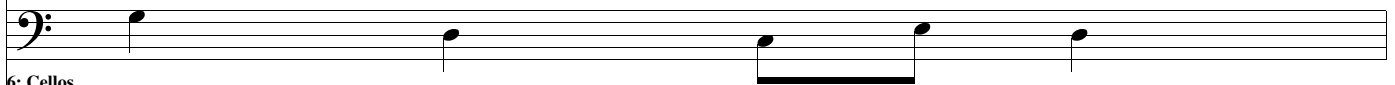
4: Violins

Musical staff for Violins 4, showing a melodic line.



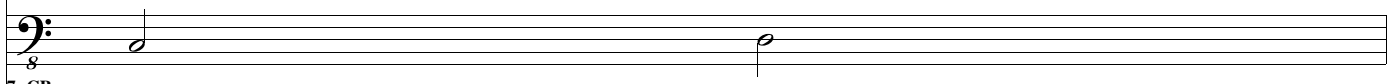
5: Violas

Musical staff for Violas 5, showing a melodic line.



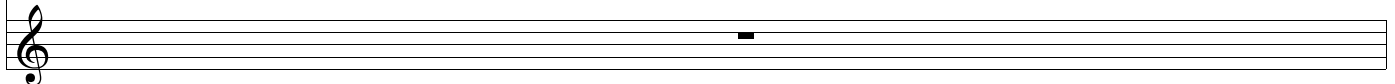
6: Cellos

Musical staff for Cellos 6, showing a melodic line.



7: CBass

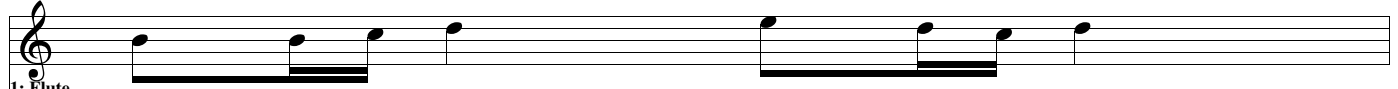
Musical staff for CBass 7, showing a melodic line.



8: Bells

Musical staff for Bells 8, showing a melodic line.

21



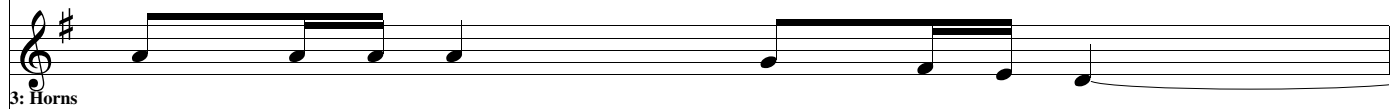
1: Flute

Musical staff for Flute 1, showing a sequence of eighth notes and quarter notes.



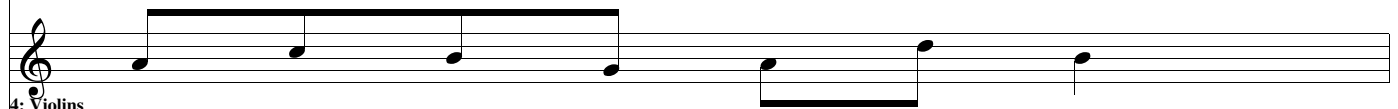
2: Clarinet

Musical staff for Clarinet 2, featuring a complex rhythmic pattern with sixteenth and thirty-second notes.



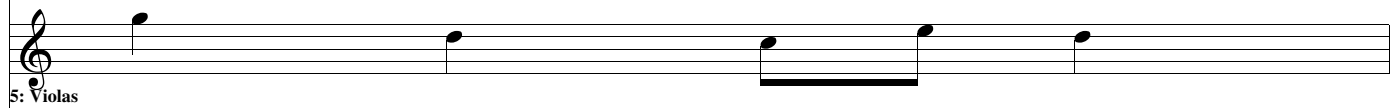
3: Horns

Musical staff for Horns 3, showing a sequence of quarter notes and a half note.



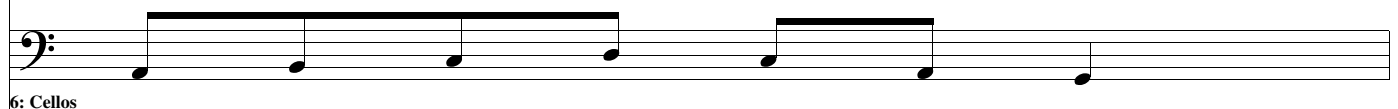
4: Violins

Musical staff for Violins 4, showing a sequence of quarter notes and a half note.



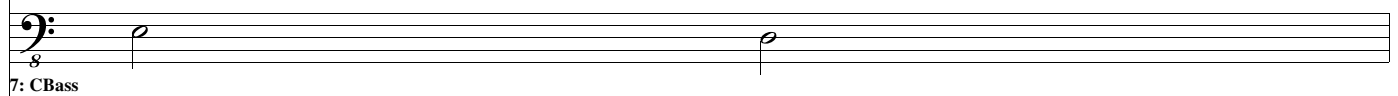
5: Violas

Musical staff for Violas 5, showing a sequence of quarter notes and a half note.



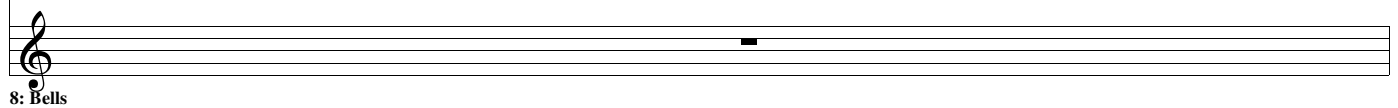
6: Cellos

Musical staff for Cellos 6, showing a sequence of quarter notes and a half note.



7: CBass

Musical staff for CBass 7, showing a sequence of quarter notes and a half note.



8: Bells

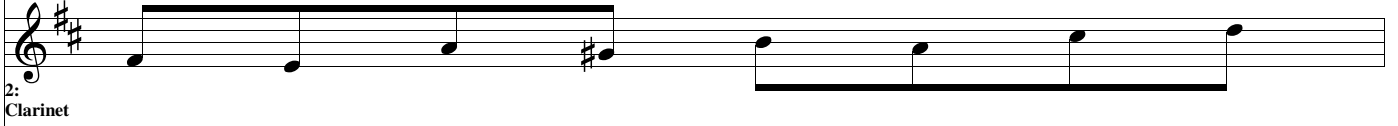
Musical staff for Bells 8, showing a single quarter note.

22



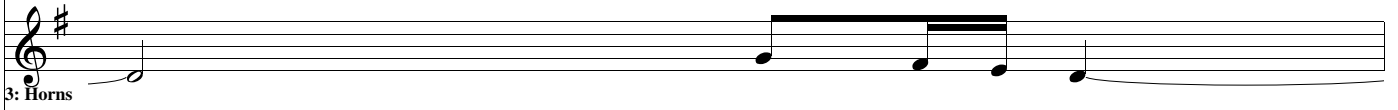
1: Flute

Musical staff for Flute 1, showing a complex rhythmic pattern with eighth and sixteenth notes.



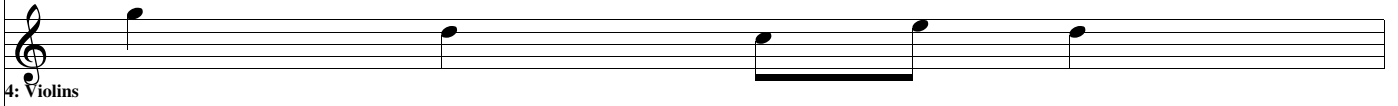
2: Clarinet

Musical staff for Clarinet 2, showing a melodic line with a sharp sign on the second measure.



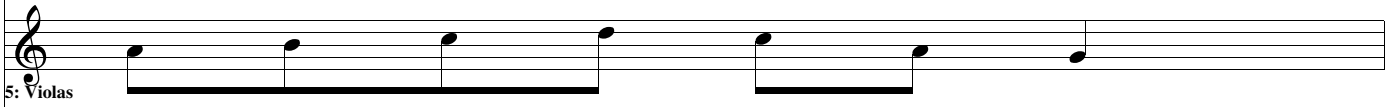
3: Horns

Musical staff for Horns 3, showing a melodic line with a sharp sign on the first measure.



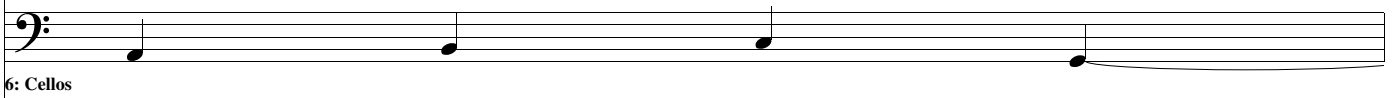
4: Violins

Musical staff for Violins 4, showing a melodic line.



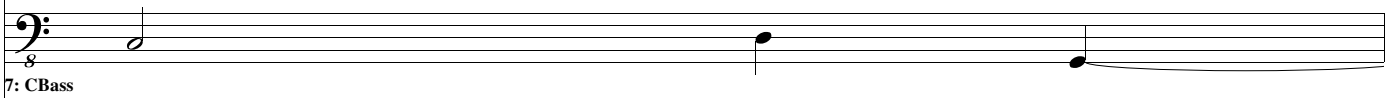
5: Violas

Musical staff for Violas 5, showing a melodic line.



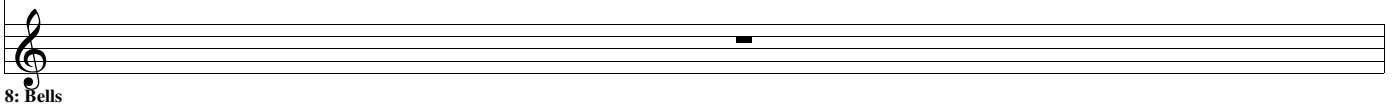
6: Cellos

Musical staff for Cellos 6, showing a melodic line.



7: CBass

Musical staff for CBass 7, showing a melodic line.



8: Bells

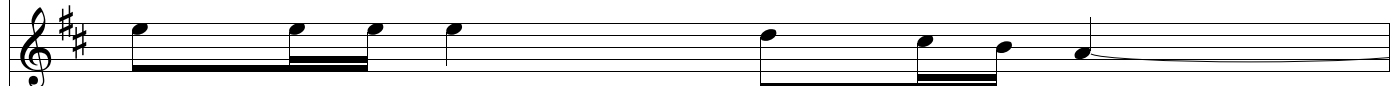
Musical staff for Bells 8, showing a single note.

23



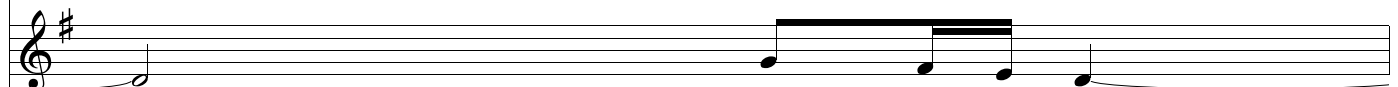
1: Flute

Musical staff for Flute 1, showing a melodic line with eighth and sixteenth notes.



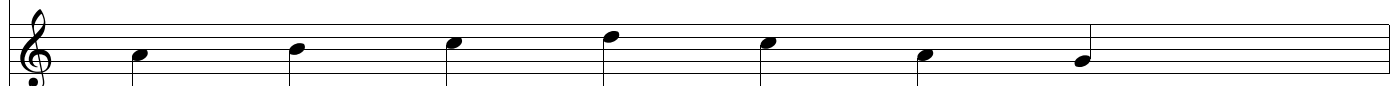
2: Clarinet

Musical staff for Clarinet 2, showing a melodic line with eighth and sixteenth notes.



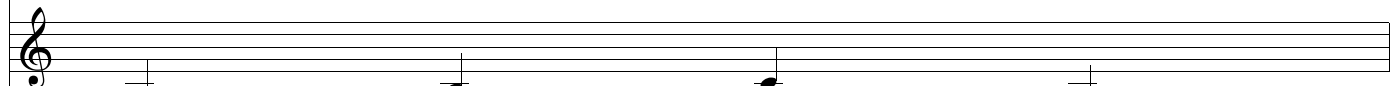
3: Horns

Musical staff for Horns 3, showing a melodic line with eighth and sixteenth notes.



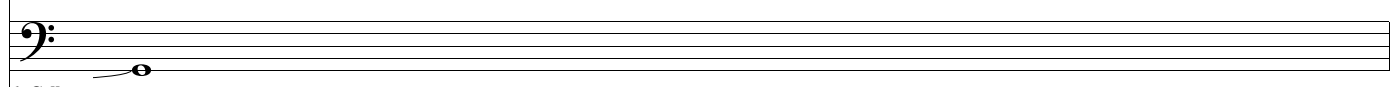
4: Violins

Musical staff for Violins 4, showing a melodic line with eighth and sixteenth notes.



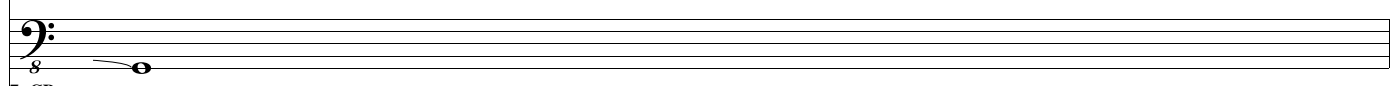
5: Violas

Musical staff for Violas 5, showing a melodic line with eighth and sixteenth notes.



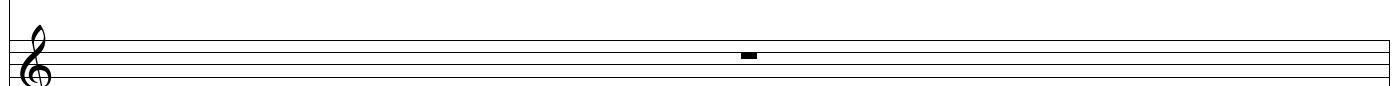
6: Cellos

Musical staff for Cellos 6, showing a melodic line with eighth and sixteenth notes.



7: CBass

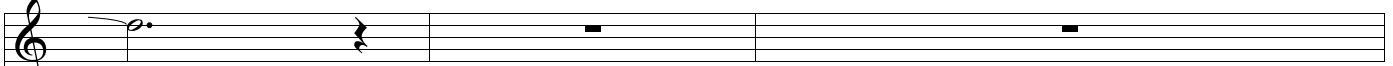
Musical staff for CBass 7, showing a melodic line with eighth and sixteenth notes.



8: Bells

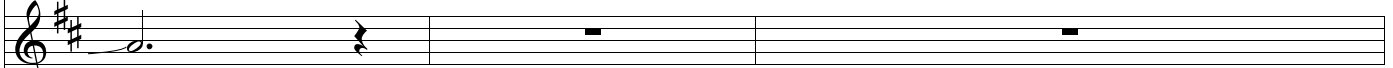
Musical staff for Bells 8, showing a melodic line with eighth and sixteenth notes.

24



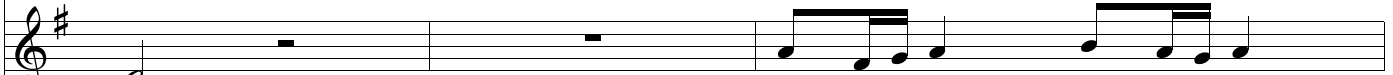
1: Flute

Musical staff for Flute 1, showing a treble clef, a key signature of one sharp (F#), and a 4/4 time signature. The staff contains a whole note chord in the first measure, followed by rests in the second, third, and fourth measures.



2: Clarinet

Musical staff for Clarinet 2, showing a treble clef, a key signature of one sharp (F#), and a 4/4 time signature. The staff contains a whole note chord in the first measure, followed by rests in the second, third, and fourth measures.




3: Horns

Musical staff for Horns 3, showing a treble clef, a key signature of one sharp (F#), and a 4/4 time signature. The staff contains a whole note chord in the first measure, followed by rests in the second and third measures, and a quarter-note melody in the fourth measure.



4: Violins

Musical staff for Violins 4, showing a treble clef and a 4/4 time signature. The staff contains a quarter-note melody in the first measure, followed by eighth-note patterns in the second and third measures, and a quarter-note melody in the fourth measure.



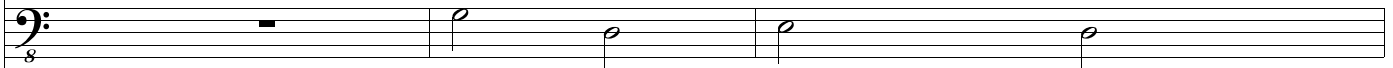
5: Violas

Musical staff for Violas 5, showing a treble clef and a 4/4 time signature. The staff contains a quarter-note melody in the first measure, followed by eighth-note patterns in the second and third measures, and a quarter-note melody in the fourth measure.



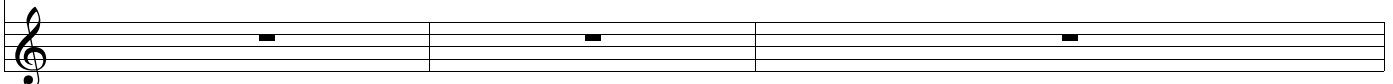
6: Cellos

Musical staff for Cellos 6, showing a bass clef and a 4/4 time signature. The staff contains a quarter-note melody in the first measure, followed by eighth-note patterns in the second and third measures, and a quarter-note melody in the fourth measure.



7: CBass

Musical staff for CBass 7, showing a bass clef and a 4/4 time signature. The staff contains a whole note chord in the first measure, followed by rests in the second, third, and fourth measures.



8: Bells

Musical staff for Bells 8, showing a treble clef and a 4/4 time signature. The staff contains whole rests in all four measures.

8: Bells



27

1: Flute

2: Clarinet

3: Horns

4: Violins

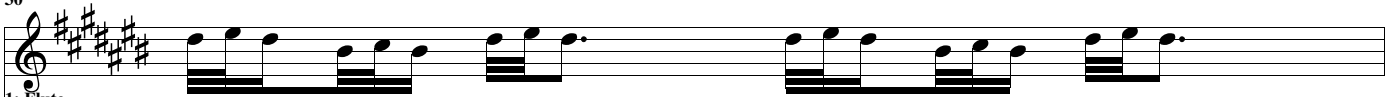
5: Violas

6: Cellos

7: CBass

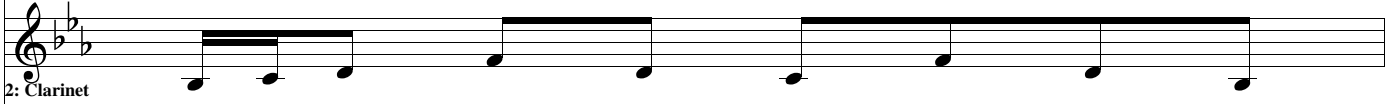
8: Bells

30



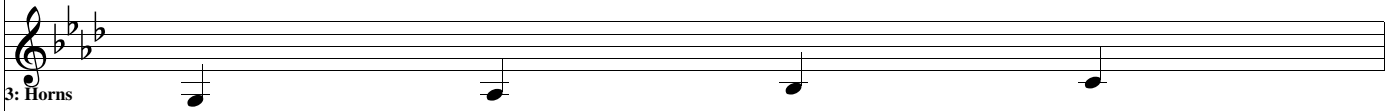
1: Flute

Musical staff for Flute 1, featuring a treble clef and a key signature of three sharps (F#, C#, G#). The staff contains a sequence of eighth notes and quarter notes, with some notes beamed together.



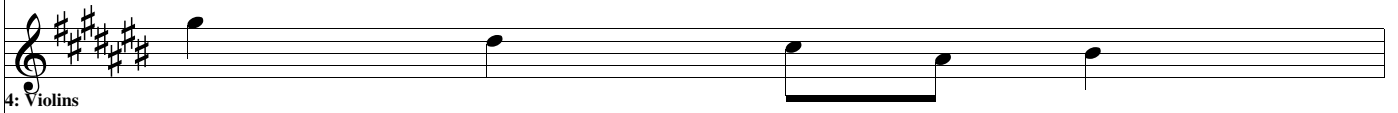
2: Clarinet

Musical staff for Clarinet 2, featuring a treble clef and a key signature of two flats (Bb, Eb). The staff contains a sequence of quarter notes.



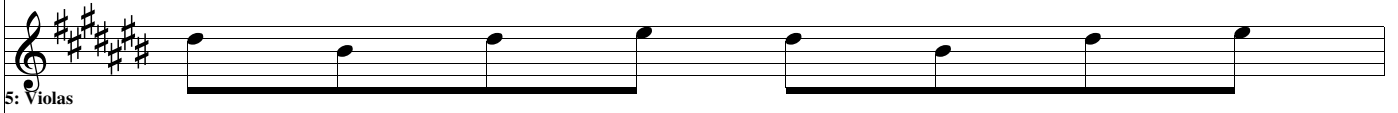
3: Horns

Musical staff for Horns 3, featuring a treble clef and a key signature of two flats (Bb, Eb). The staff contains a sequence of quarter notes.



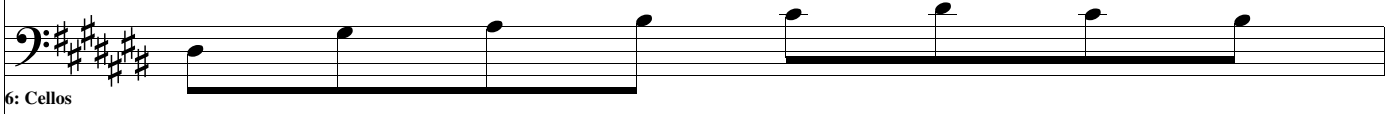
4: Violins

Musical staff for Violins 4, featuring a treble clef and a key signature of three sharps (F#, C#, G#). The staff contains a sequence of quarter notes.



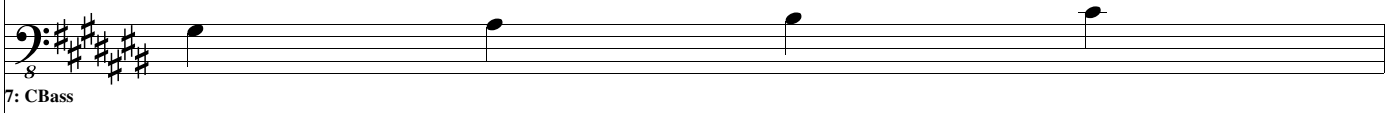
5: Violas

Musical staff for Violas 5, featuring a treble clef and a key signature of three sharps (F#, C#, G#). The staff contains a sequence of quarter notes.



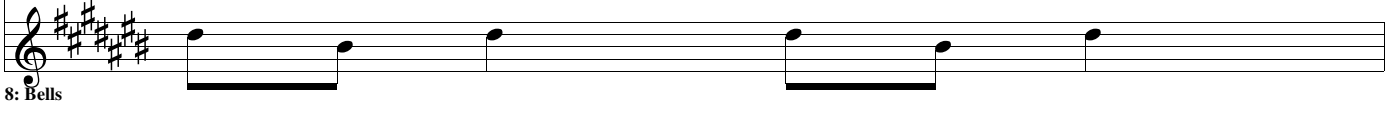
6: Cellos

Musical staff for Cellos 6, featuring a bass clef and a key signature of three sharps (F#, C#, G#). The staff contains a sequence of quarter notes.



7: CBass

Musical staff for CBass 7, featuring a bass clef and a key signature of three sharps (F#, C#, G#). The staff contains a sequence of quarter notes.



8: Bells

Musical staff for Bells 8, featuring a treble clef and a key signature of three sharps (F#, C#, G#). The staff contains a sequence of quarter notes.

31



1: Flute

Musical staff for Flute 1, featuring a treble clef and a key signature of three sharps (F#, C#, G#). The staff contains a series of eighth-note patterns, starting with a double sharp (x) on the first note.



2: Clarinet

Musical staff for Clarinet 2, featuring a treble clef and a key signature of two flats (Bb, Eb). The staff contains a series of eighth-note patterns.



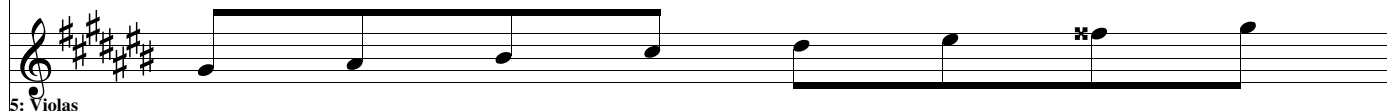
3: Horns

Musical staff for Horns 3, featuring a treble clef and a key signature of two flats (Bb, Eb). The staff contains a series of eighth-note patterns.



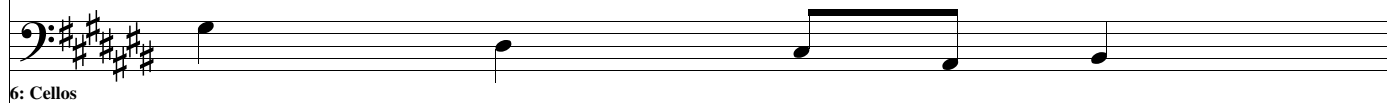
4: Violins

Musical staff for Violins 4, featuring a treble clef and a key signature of three sharps (F#, C#, G#). The staff contains a series of eighth-note patterns.



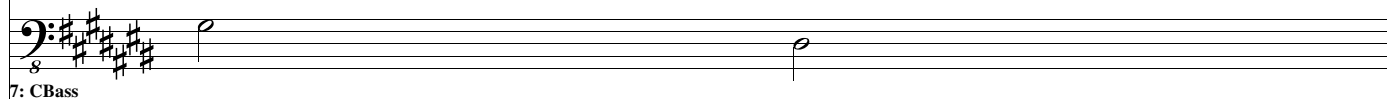
5: Violas

Musical staff for Violas 5, featuring a treble clef and a key signature of three sharps (F#, C#, G#). The staff contains a series of eighth-note patterns, ending with a double sharp (x) on the final note.



6: Cellos

Musical staff for Cellos 6, featuring a bass clef and a key signature of three sharps (F#, C#, G#). The staff contains a series of eighth-note patterns.



7: CBass

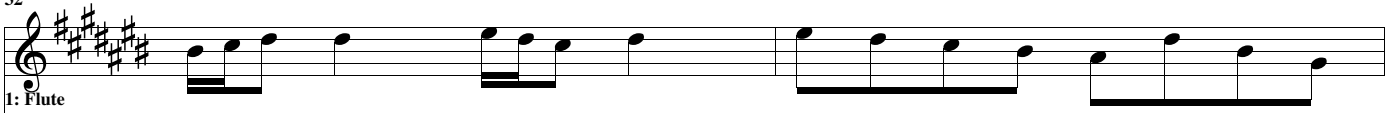
Musical staff for CBass 7, featuring a bass clef and a key signature of three sharps (F#, C#, G#). The staff contains a series of eighth-note patterns.



8: Bells

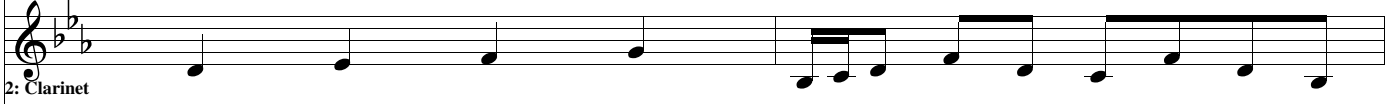
Musical staff for Bells 8, featuring a treble clef and a key signature of three sharps (F#, C#, G#). The staff contains a series of eighth-note patterns.

32



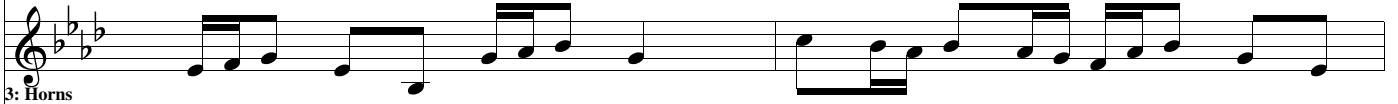
1: Flute

Musical staff for Flute 1, featuring a treble clef and a key signature of three sharps (F#, C#, G#). The staff contains a melodic line with eighth and quarter notes.



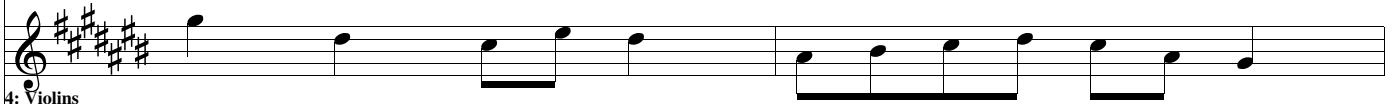
2: Clarinet

Musical staff for Clarinet 2, featuring a treble clef and a key signature of two flats (Bb, Eb). The staff contains a melodic line with quarter and eighth notes.



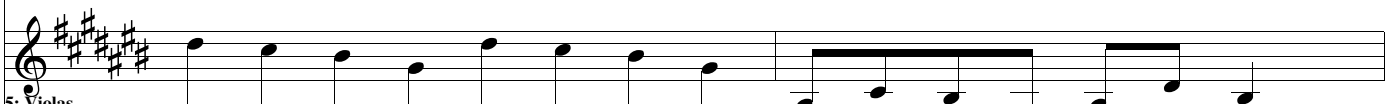
3: Horns

Musical staff for Horns 3, featuring a treble clef and a key signature of two flats (Bb, Eb). The staff contains a melodic line with eighth and quarter notes.



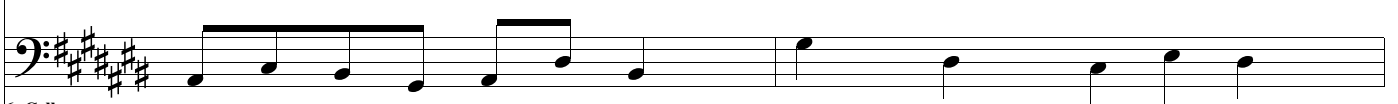
4: Violins

Musical staff for Violins 4, featuring a treble clef and a key signature of three sharps (F#, C#, G#). The staff contains a melodic line with quarter and eighth notes.



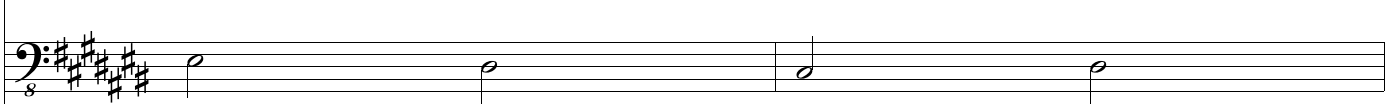
5: Violins

Musical staff for Violins 5, featuring a treble clef and a key signature of three sharps (F#, C#, G#). The staff contains a melodic line with quarter and eighth notes.



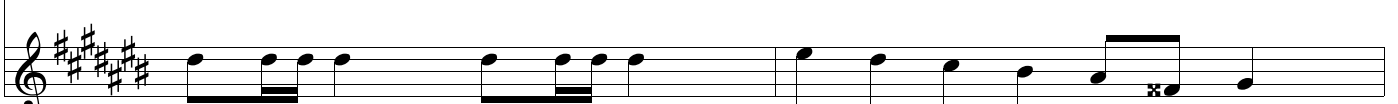
6: Cellos

Musical staff for Cellos 6, featuring a bass clef and a key signature of three sharps (F#, C#, G#). The staff contains a melodic line with quarter and eighth notes.



7: CBass

Musical staff for C Bass 7, featuring a bass clef and a key signature of three sharps (F#, C#, G#). The staff contains a simple bass line with quarter notes.



8: Bells

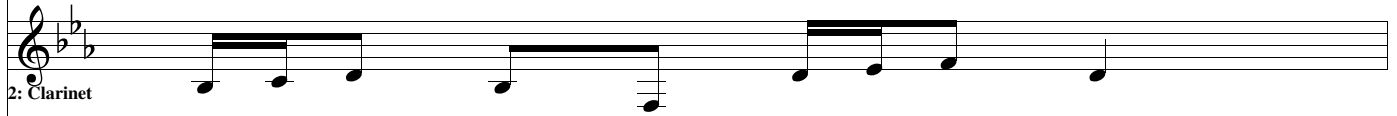
Musical staff for Bells 8, featuring a treble clef and a key signature of three sharps (F#, C#, G#). The staff contains a melodic line with quarter and eighth notes, ending with a double bar line and a repeat sign.

34



1: Flute

Musical staff for Flute 1, featuring a treble clef and a key signature of three sharps (F#, C#, G#). The staff contains a sequence of eighth and quarter notes.



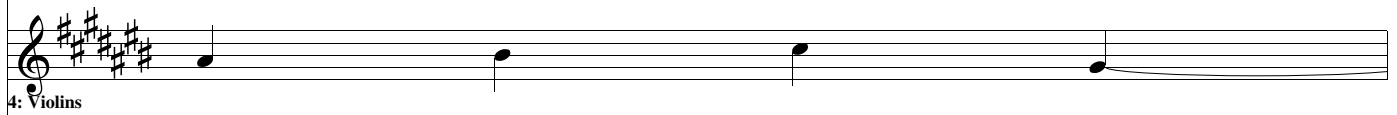
2: Clarinet

Musical staff for Clarinet 2, featuring a treble clef and a key signature of two flats (Bb, Eb). The staff contains a sequence of quarter and eighth notes.



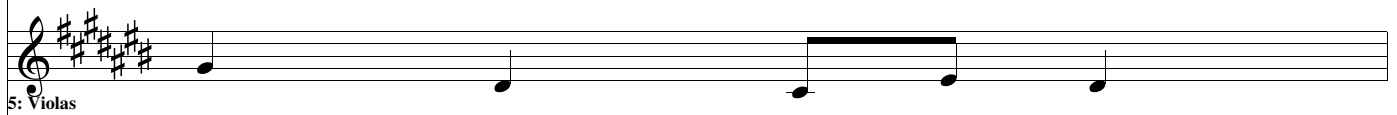
3: Horns

Musical staff for Horns 3, featuring a treble clef and a key signature of two flats (Bb, Eb). The staff contains a sequence of eighth notes.



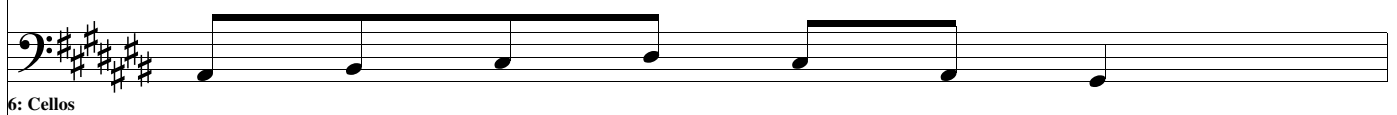
4: Violins

Musical staff for Violins 4, featuring a treble clef and a key signature of three sharps (F#, C#, G#). The staff contains a sequence of quarter notes.



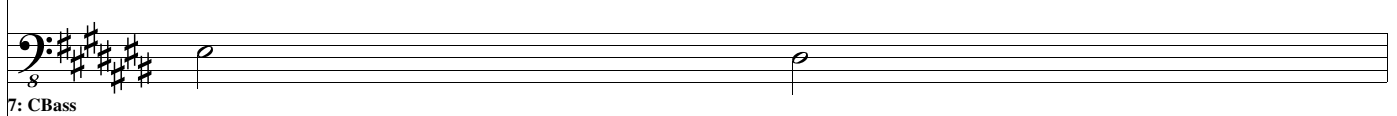
5: Violas

Musical staff for Violas 5, featuring a treble clef and a key signature of three sharps (F#, C#, G#). The staff contains a sequence of quarter notes.



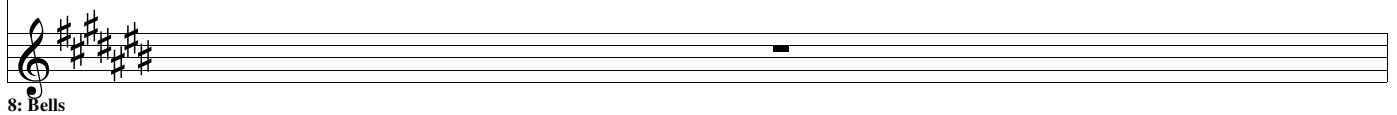
6: Cellos

Musical staff for Cellos 6, featuring a bass clef and a key signature of three sharps (F#, C#, G#). The staff contains a sequence of quarter notes.



7: CBass

Musical staff for CBass 7, featuring a bass clef and a key signature of three sharps (F#, C#, G#). The staff contains a sequence of half notes.



8: Bells

Musical staff for Bells 8, featuring a treble clef and a key signature of three sharps (F#, C#, G#). The staff contains a single half note.

35



1: Flute

Musical staff for Flute 1, featuring a treble clef and a key signature of three sharps (F#, C#, G#). The staff contains a melodic line with eighth and quarter notes.



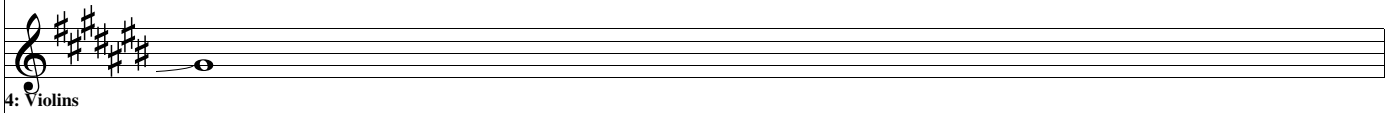
2: Clarinet

Musical staff for Clarinet 2, featuring a treble clef and a key signature of two flats (Bb, Eb). The staff contains a melodic line with eighth and quarter notes.



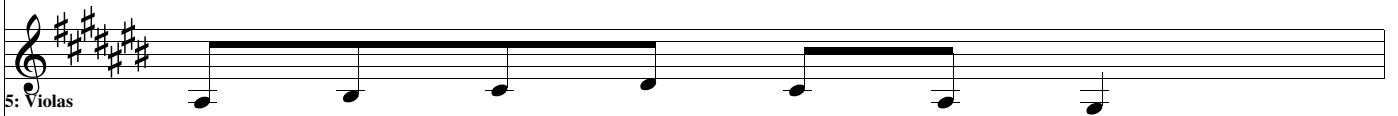
3: Horns

Musical staff for Horns 3, featuring a treble clef and a key signature of two flats (Bb, Eb). The staff contains a rhythmic accompaniment of eighth notes.



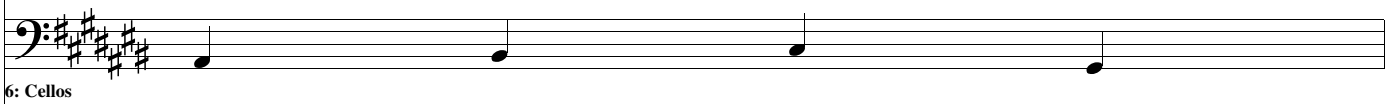
4: Violins

Musical staff for Violins 4, featuring a treble clef and a key signature of three sharps (F#, C#, G#). The staff contains a single note.



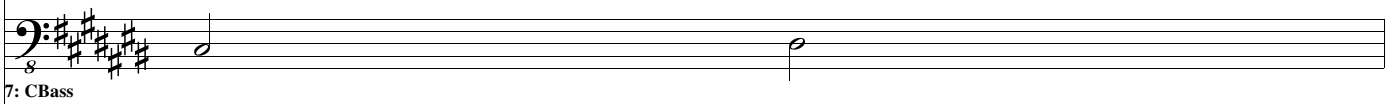
5: Violas

Musical staff for Violas 5, featuring a treble clef and a key signature of three sharps (F#, C#, G#). The staff contains a melodic line with eighth and quarter notes.



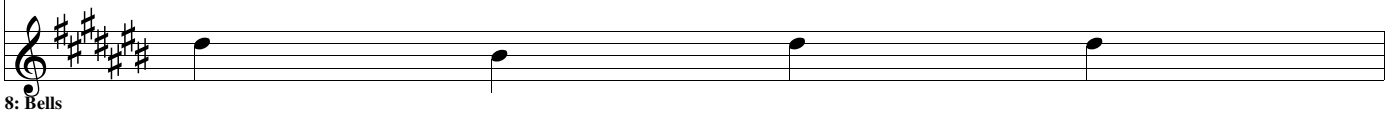
6: Cellos

Musical staff for Cellos 6, featuring a bass clef and a key signature of three sharps (F#, C#, G#). The staff contains a melodic line with eighth and quarter notes.



7: CBass

Musical staff for CBass 7, featuring a bass clef and a key signature of three sharps (F#, C#, G#). The staff contains a single note.



8: Bells

Musical staff for Bells 8, featuring a treble clef and a key signature of three sharps (F#, C#, G#). The staff contains a melodic line with eighth and quarter notes.

36  
1: Flute

2: Clarinet

3: Horns

4: Violins

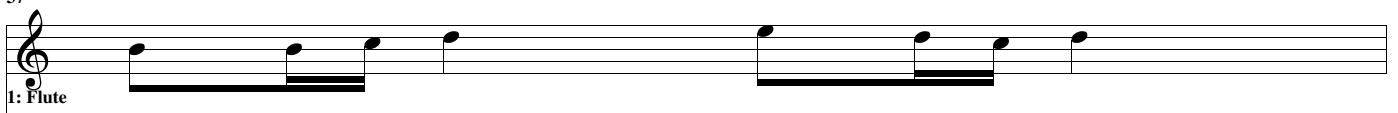
5: Violas

6: Cellos

8  
7: CBass

8: Bells

37



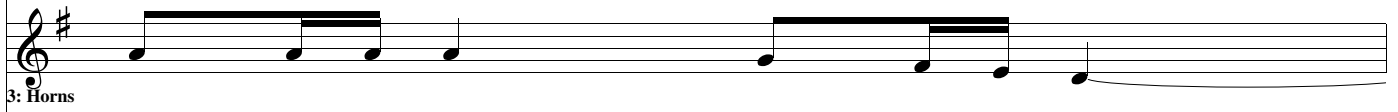
1: Flute

Musical staff for Flute 1, showing a melodic line with eighth and quarter notes.



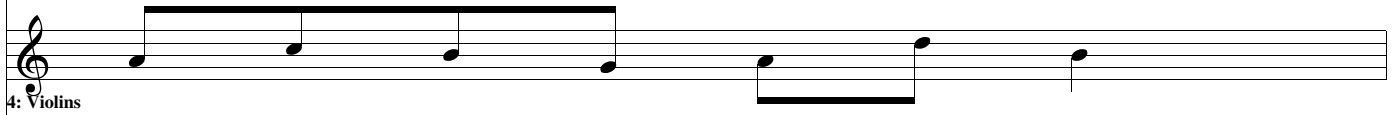
2: Clarinet

Musical staff for Clarinet 2, featuring a complex rhythmic pattern with sixteenth and eighth notes.



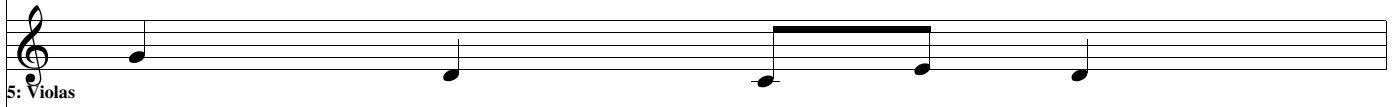
3: Horns

Musical staff for Horns 3, showing a melodic line with quarter and eighth notes.



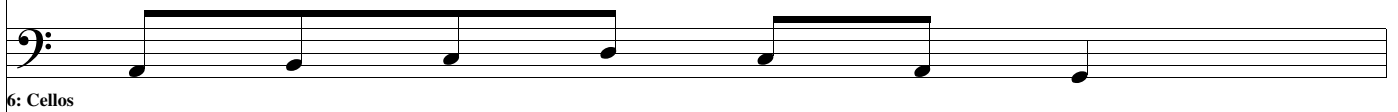
4: Violins

Musical staff for Violins 4, showing a melodic line with quarter and eighth notes.



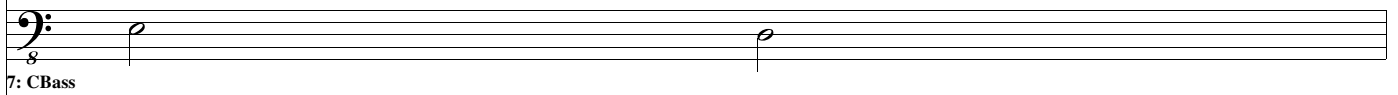
5: Violas

Musical staff for Violas 5, showing a melodic line with quarter and eighth notes.



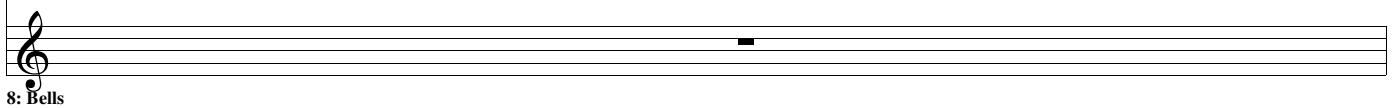
6: Cellos

Musical staff for Cellos 6, showing a melodic line with quarter and eighth notes.



7: CBass

Musical staff for CBass 7, showing a melodic line with quarter and eighth notes.



8: Bells

Musical staff for Bells 8, showing a melodic line with quarter and eighth notes.

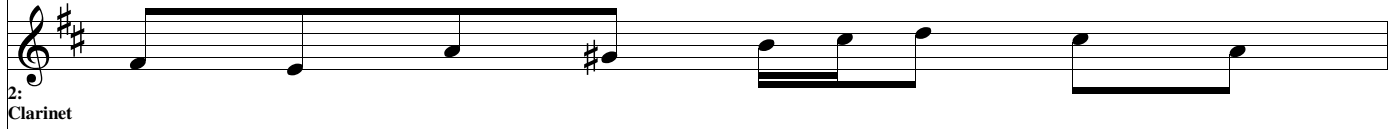


38



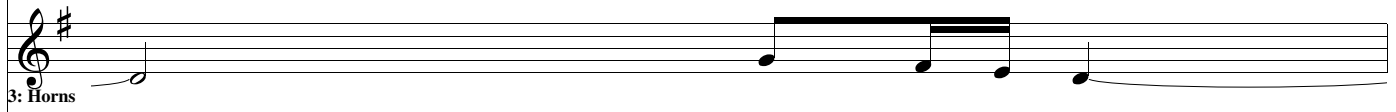
1: Flute

Musical staff for Flute 1, showing a complex melodic line with many beamed eighth notes.



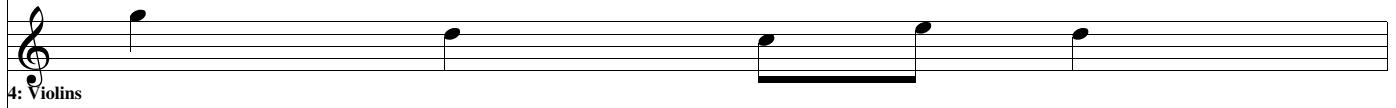
2: Clarinet

Musical staff for Clarinet 2, showing a melodic line with some rests and a sharp sign.



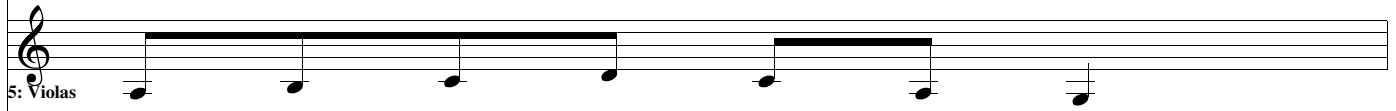
3: Horns

Musical staff for Horns 3, showing a melodic line with some rests.



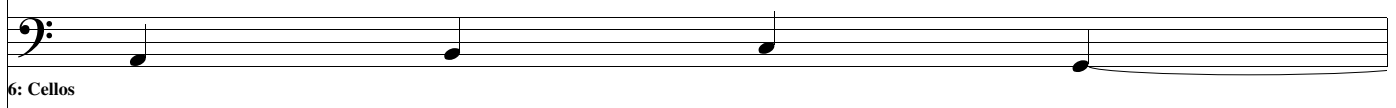
4: Violins

Musical staff for Violins 4, showing a melodic line with some rests.



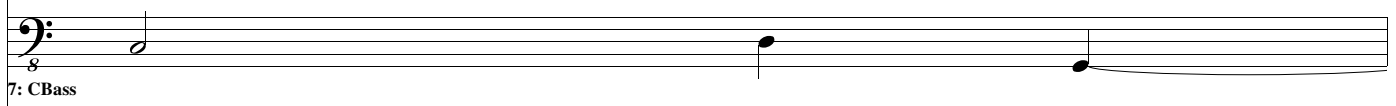
5: Violas

Musical staff for Violas 5, showing a melodic line with some rests.



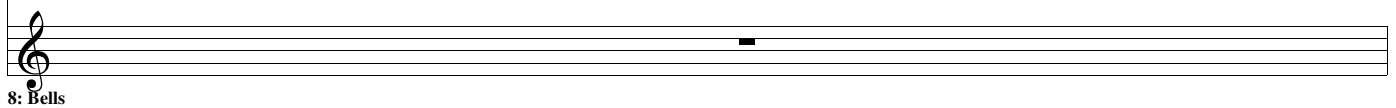
6: Cellos

Musical staff for Cellos 6, showing a melodic line with some rests.



7: CBass

Musical staff for CBass 7, showing a melodic line with some rests.



8: Bells

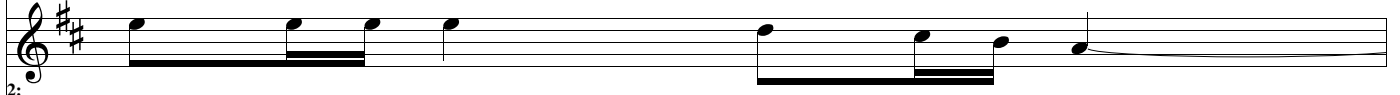
Musical staff for Bells 8, showing a single note with a fermata.

39



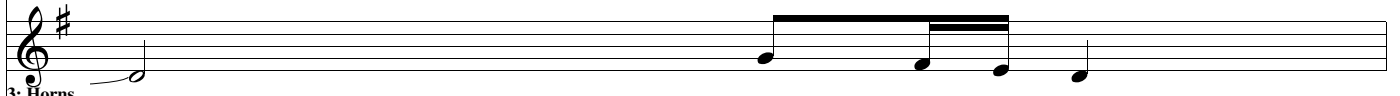
1: Flute

Musical staff for Flute 1, showing a complex rhythmic pattern with eighth and sixteenth notes.



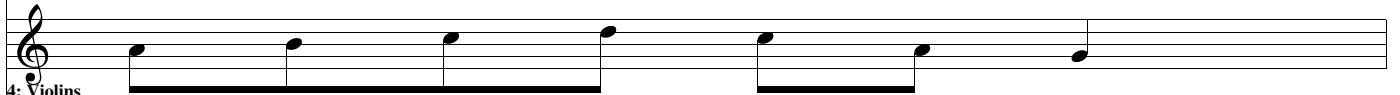
2: Clarinet

Musical staff for Clarinet 2, showing a melodic line with quarter and eighth notes.



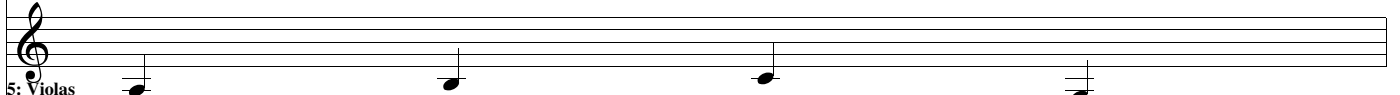
3: Horns

Musical staff for Horns 3, showing a melodic line with quarter and eighth notes.



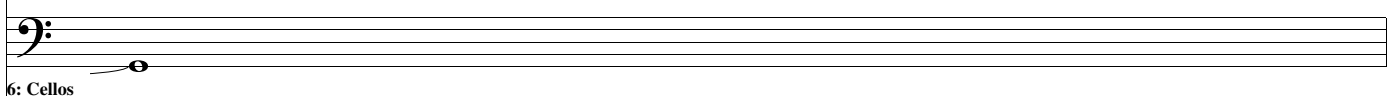
4: Violins

Musical staff for Violins 4, showing a melodic line with quarter and eighth notes.



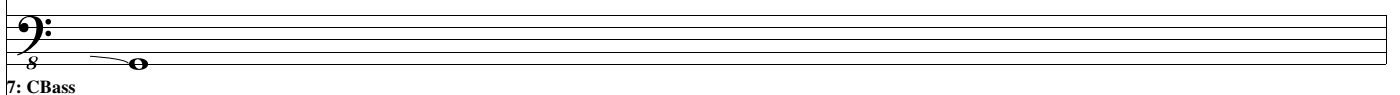
5: Violas

Musical staff for Violas 5, showing a melodic line with quarter and eighth notes.



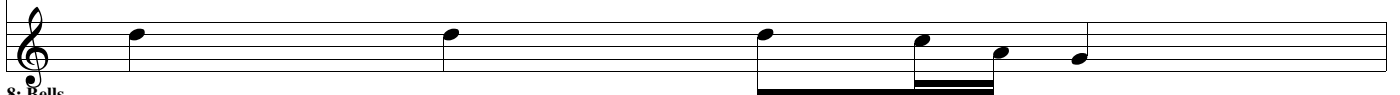
6: Cellos

Musical staff for Cellos 6, showing a melodic line with quarter and eighth notes.



7: CBass

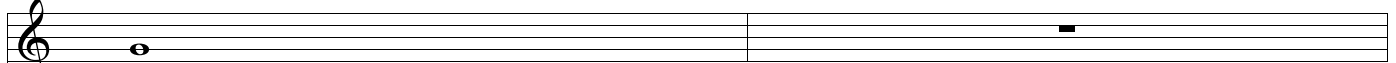
Musical staff for CBass 7, showing a melodic line with quarter and eighth notes.



8: Bells

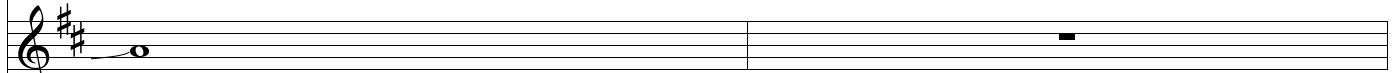
Musical staff for Bells 8, showing a melodic line with quarter and eighth notes.

40



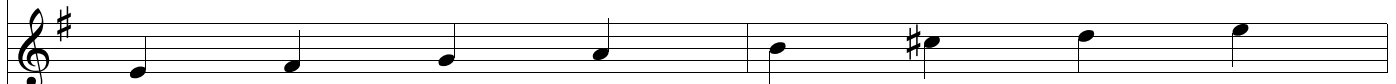
1: Flute

Musical staff for Flute 1, showing a whole note G4 in the first measure and a whole rest in the second measure.



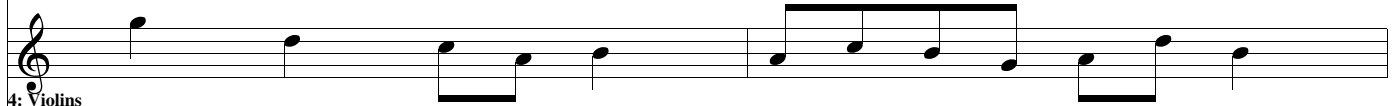
2: Clarinet

Musical staff for Clarinet 2, showing a whole note G4 in the first measure and a whole rest in the second measure.



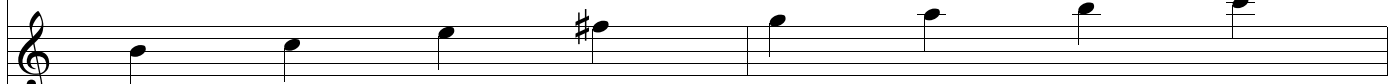
3: Horns

Musical staff for Horns 3, showing a sequence of notes: G4, A4, B4, C5, D5, E5, F5, G5.



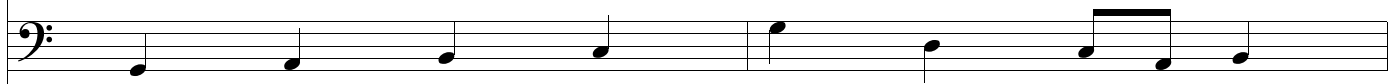
4: Violins

Musical staff for Violins 4, showing a sequence of notes: G4, A4, B4, C5, D5, E5, F5, G5.



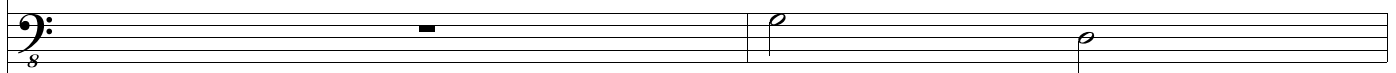
5: Violas

Musical staff for Violas 5, showing a sequence of notes: G4, A4, B4, C5, D5, E5, F5, G5.



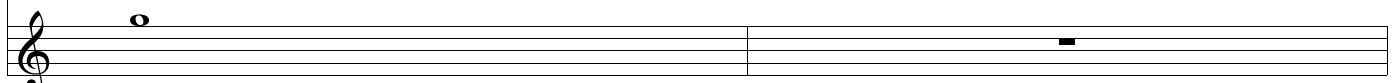
6: Cellos

Musical staff for Cellos 6, showing a sequence of notes: G3, A3, B3, C4, D4, E4, F4, G4.



7: CBass

Musical staff for CBass 7, showing a whole rest in the first measure and a whole note G2 in the second measure.



8: Bells

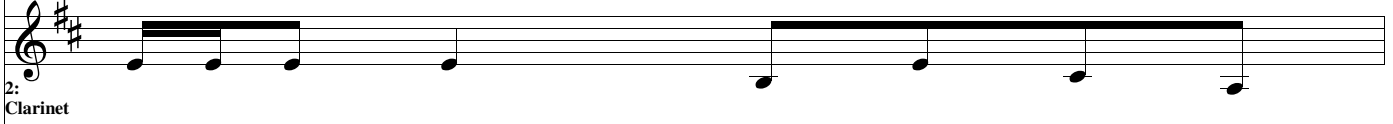
Musical staff for Bells 8, showing a whole note G4 in the first measure and a whole rest in the second measure.

42



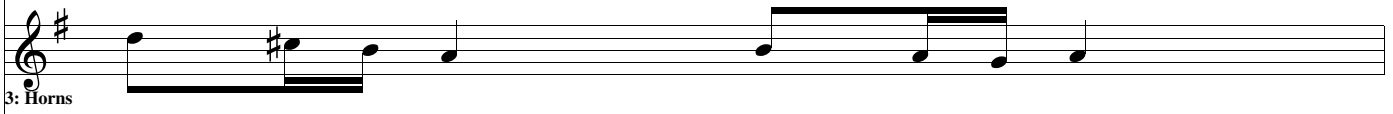
1: Flute

Musical staff for Flute 1, showing a complex rhythmic pattern with eighth and sixteenth notes.



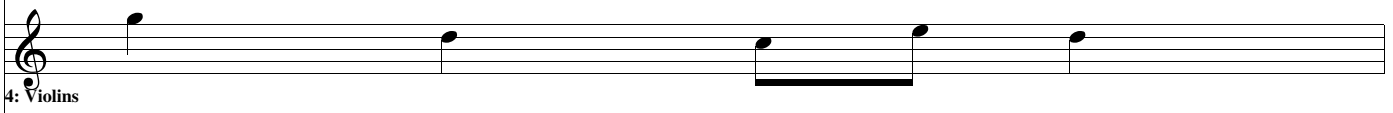
2: Clarinet

Musical staff for Clarinet 2, showing a melodic line with quarter and eighth notes.



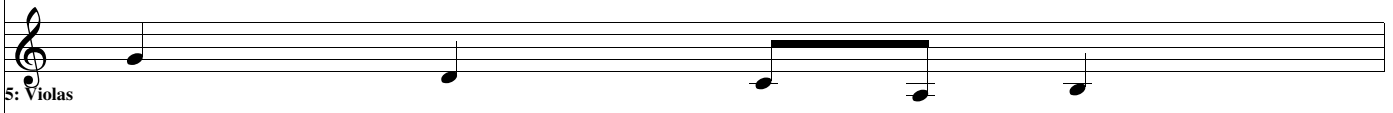
3: Horns

Musical staff for Horns 3, showing a melodic line with quarter and eighth notes.



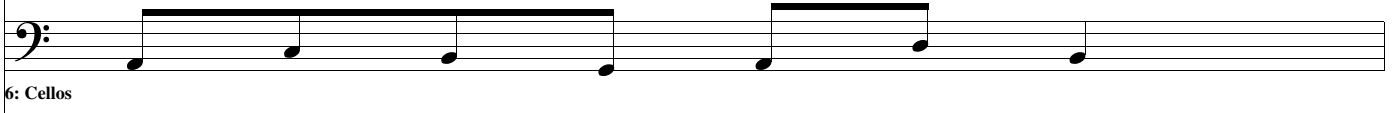
4: Violins

Musical staff for Violins 4, showing a melodic line with quarter and eighth notes.



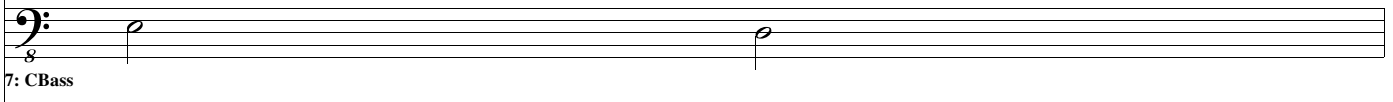
5: Violas

Musical staff for Violas 5, showing a melodic line with quarter and eighth notes.



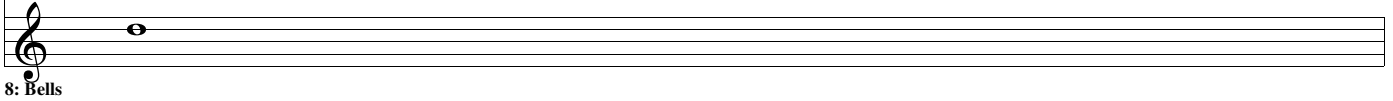
6: Cellos

Musical staff for Cellos 6, showing a melodic line with quarter and eighth notes.



7: CBass

Musical staff for CBass 7, showing a melodic line with quarter and eighth notes.



8: Bells

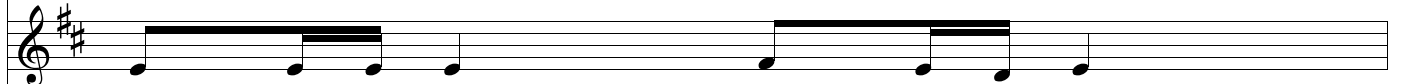
Musical staff for Bells 8, showing a melodic line with quarter and eighth notes.

43



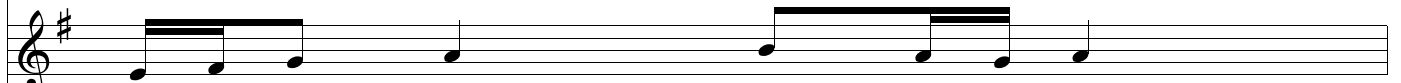
1: Flute

Musical staff for Flute 1, showing a complex melodic line with many beamed eighth and sixteenth notes.



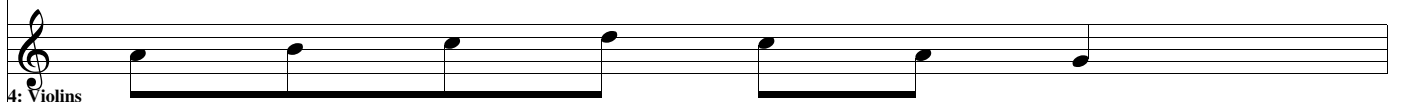
2: Clarinet

Musical staff for Clarinet 2, showing a melodic line with quarter and eighth notes.



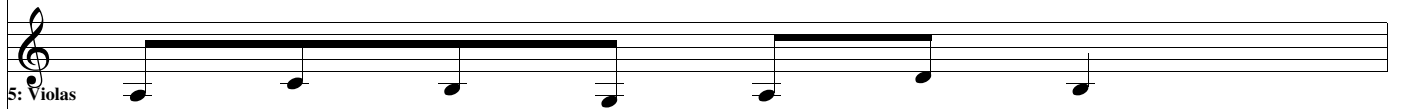
3: Horns

Musical staff for Horns 3, showing a melodic line with quarter and eighth notes.



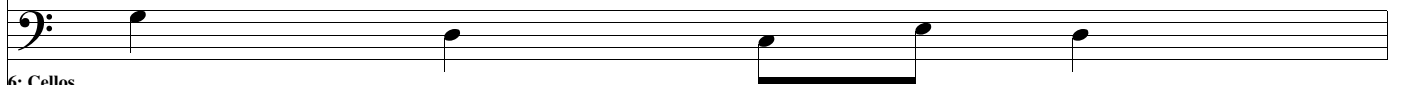
4: Violins

Musical staff for Violins 4, showing a melodic line with quarter and eighth notes.



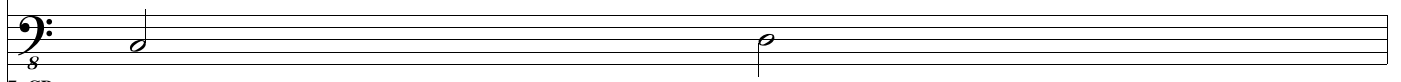
5: Violas

Musical staff for Violas 5, showing a melodic line with quarter and eighth notes.



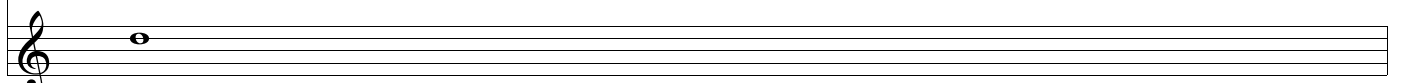
6: Cellos

Musical staff for Cellos 6, showing a melodic line with quarter and eighth notes.



7: CBass

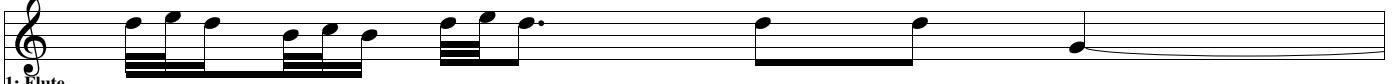
Musical staff for CBass 7, showing a melodic line with quarter and eighth notes.



8: Bells

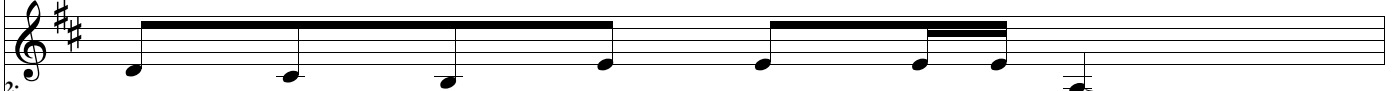
Musical staff for Bells 8, showing a single sustained note.

44



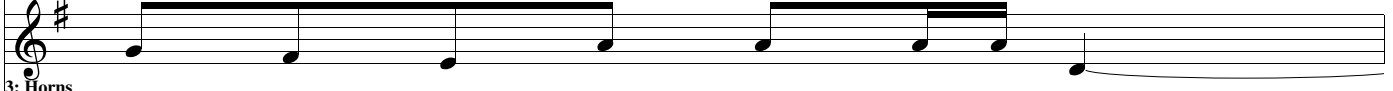
1: Flute

Musical staff for Flute 1, showing a melodic line with eighth and sixteenth notes.



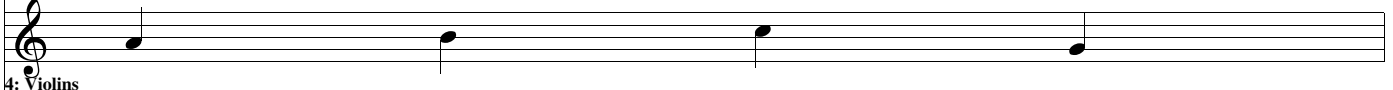
2: Clarinet

Musical staff for Clarinet 2, showing a melodic line with quarter and eighth notes.



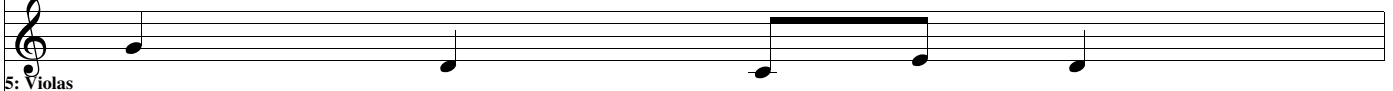
3: Horns

Musical staff for Horns 3, showing a melodic line with quarter and eighth notes.



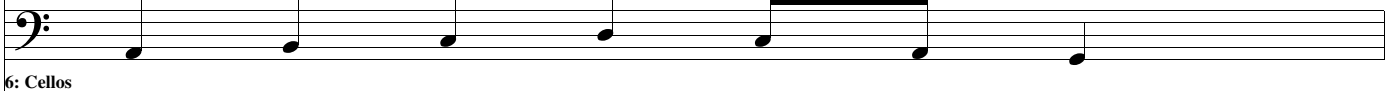
4: Violins

Musical staff for Violins 4, showing a melodic line with quarter notes.



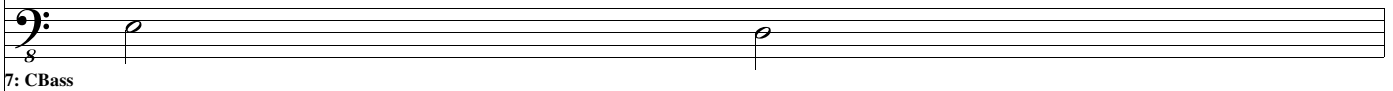
5: Violas

Musical staff for Violas 5, showing a melodic line with quarter notes.



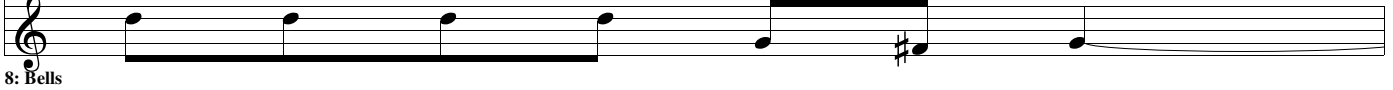
6: Cellos

Musical staff for Cellos 6, showing a melodic line with quarter notes.



7: CBass

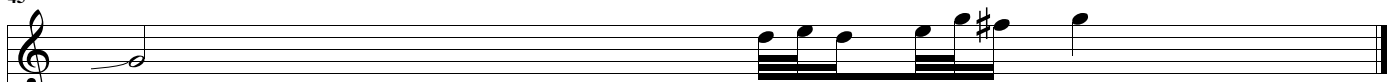
Musical staff for CBass 7, showing a melodic line with half notes.



8: Bells

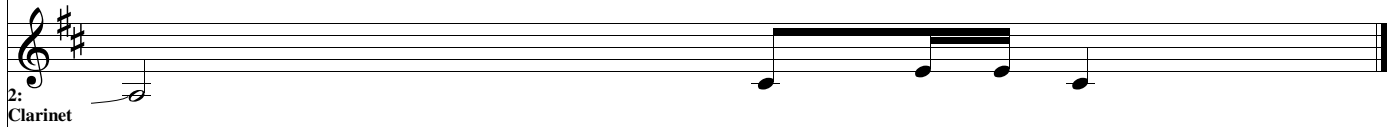
Musical staff for Bells 8, showing a melodic line with quarter notes and a sharp sign.

45



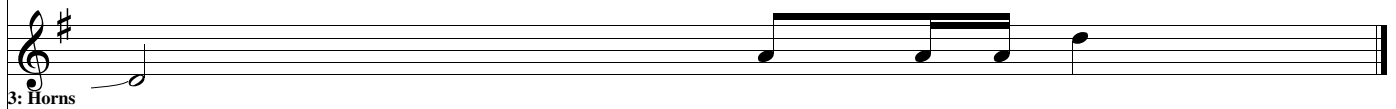
1: Flute

Musical staff for Flute 1, starting with a treble clef and a whole note. The staff contains a melodic line with a key signature of one sharp (F#) and a dynamic marking of *mf*.



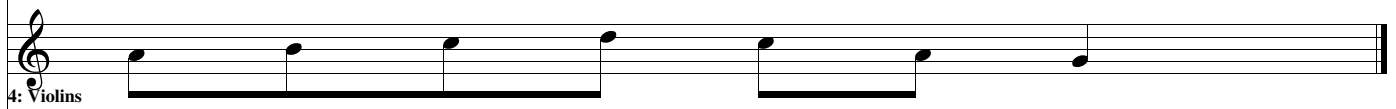
2: Clarinet

Musical staff for Clarinet 2, starting with a treble clef and a key signature of one sharp (F#). The staff contains a melodic line with a dynamic marking of *mf*.



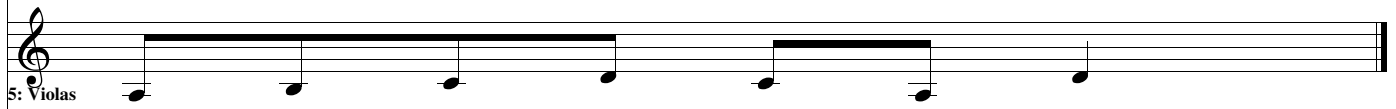
3: Horns

Musical staff for Horns 3, starting with a treble clef and a key signature of one sharp (F#). The staff contains a melodic line with a dynamic marking of *mf*.



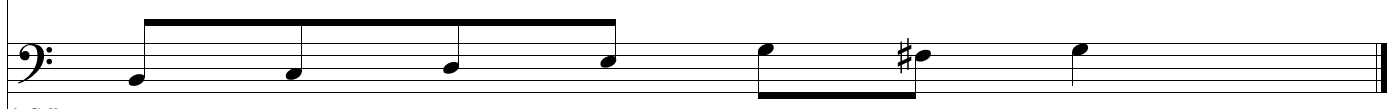
4: Violins

Musical staff for Violins 4, starting with a treble clef. The staff contains a melodic line with a dynamic marking of *mf*.



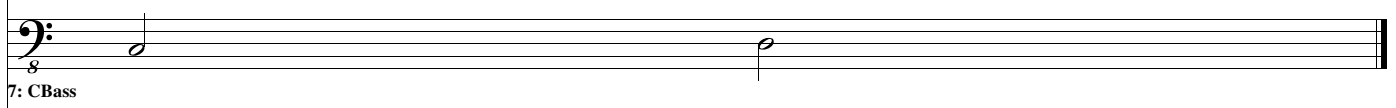
5: Violas

Musical staff for Violas 5, starting with a treble clef. The staff contains a melodic line with a dynamic marking of *mf*.



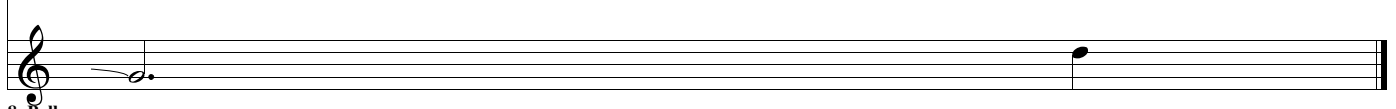
6: Cellos

Musical staff for Cellos 6, starting with a bass clef. The staff contains a melodic line with a key signature of one sharp (F#) and a dynamic marking of *mf*.



7: CBass

Musical staff for CBass 7, starting with a bass clef and a dynamic marking of *mf*. The staff contains a melodic line with a dynamic marking of *mf*.



8: Bells

Musical staff for Bells 8, starting with a treble clef. The staff contains a melodic line with a dynamic marking of *mf*.