



Rebecca Kaiserin

Hong Kong, Hong Kong

An Endless Pursuit

A propos de l'artiste

Sociétaire : CASH - Code IPI artiste : 27403309
Page artiste : https://www.free-scores.com/partitions_gratuites_kaiserinrebecca.htm

A propos de la pièce



Titre : An Endless Pursuit
Compositeur : Kaiserin, Rebecca
Droit d'auteur : Copyright © Rebecca Kaiserin
Instrumentation : Piano seul
Style : New age - Ambiance

Rebecca Kaiserin sur [free-scores.com](https://www.free-scores.com)



Cette partition ne fait pas partie du domaine public. Merci de contacter l'artiste pour toute utilisation hors du cadre privé.

Interdiction de diffusion sur d'autres sites Web.



- écouter l'audio
- partager votre interprétation
- commenter la partition
- contacter l'artiste

An Endless Pursuit

Kaiserin Rebecca

Andantino ♩=90

Measures 1-3 of the piece. The music is in 4/4 time with a key signature of three flats (B-flat, E-flat, A-flat). The tempo is Andantino at 90 beats per minute. The first staff (treble clef) begins with a piano (*p*) dynamic and features a melodic line with eighth and sixteenth notes. The second staff (bass clef) provides a harmonic accompaniment with chords and single notes.

Measures 4-7. The music continues with the same melodic and harmonic patterns. The dynamic remains piano (*p*) until measure 5, where it changes to mezzo-piano (*mp*). The notation includes various note values and rests, maintaining the 4/4 time signature.

Measures 8-11. The melodic line in the treble clef becomes more active with sixteenth-note runs. The bass clef continues with a steady accompaniment. The dynamic is mezzo-piano (*mp*).

Measures 12-15. The music builds in intensity. The dynamic changes to mezzo-forte (*mf*) in measure 13. The melodic line features more complex rhythmic patterns, including triplets and sixteenth-note groups.

Measures 16-19. The piece reaches its climax. The dynamic changes to forte (*f*) in measure 17. The music is characterized by rapid sixteenth-note passages in both hands, creating a sense of urgency and excitement.

19

Measures 19 and 20 of a piano piece. The key signature has five flats (B-flat, E-flat, A-flat, D-flat, G-flat). Measure 19 features a treble clef with a dotted half note chord and a bass clef with a continuous eighth-note accompaniment. Measure 20 continues the accompaniment while the treble clef has a half note chord with a slur over it.

21

f

Measures 21 and 22. Measure 21 starts with a forte (*f*) dynamic. The treble clef has a dotted half note chord, and the bass clef continues the eighth-note accompaniment. Measure 22 shows the treble clef with a half note chord and the bass clef with the accompaniment.

23

Measures 23 and 24. Measure 23 has a treble clef with a dotted half note chord and a bass clef with the eighth-note accompaniment. Measure 24 features a treble clef with a half note chord and the bass clef with the accompaniment.

25

mf

Measures 25 and 26. Measure 25 begins with a mezzo-forte (*mf*) dynamic. The treble clef has a dotted half note chord, and the bass clef continues the eighth-note accompaniment. Measure 26 shows the treble clef with a half note chord and the bass clef with the accompaniment.

27

f

Measures 27 and 28. Measure 27 has a treble clef with a dotted half note chord and a bass clef with the eighth-note accompaniment. Measure 28 starts with a forte (*f*) dynamic, featuring a treble clef with a half note chord and the bass clef with the accompaniment.

29

Measures 29 and 30 of a piano piece. The key signature has two flats (B-flat and E-flat). Measure 29 features a long, sustained chord in the right hand and a descending eighth-note scale in the left hand. Measure 30 continues the descending scale in the left hand while the right hand plays a series of chords.

31

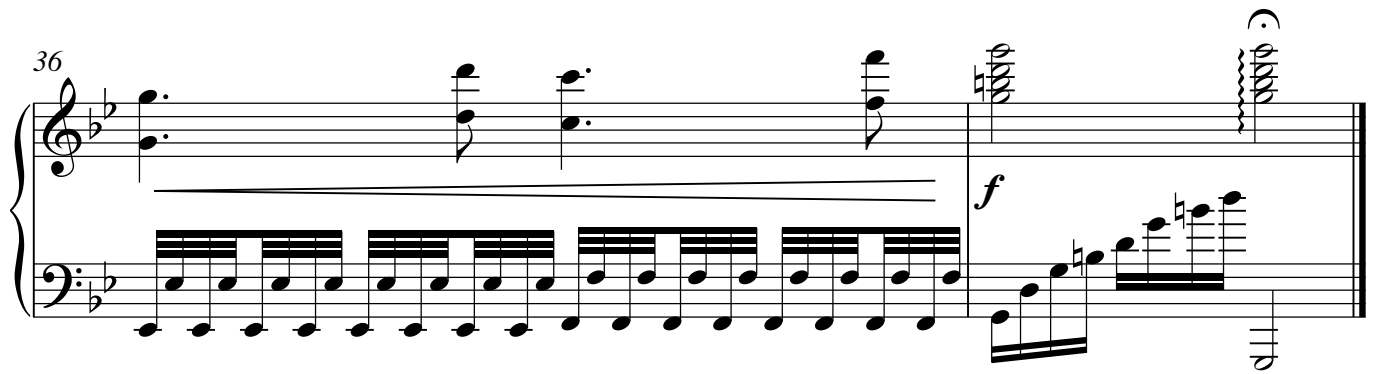
Measures 31 and 32. Measure 31 has a long, sustained chord in the right hand and a descending eighth-note scale in the left hand. Measure 32 features a long, sustained chord in the right hand and a descending eighth-note scale in the left hand. A dynamic marking of *mf* (mezzo-forte) is present in measure 32.

33

Measures 33 and 34. Measure 33 features a long, sustained chord in the right hand and a descending eighth-note scale in the left hand. Measure 34 continues the descending scale in the left hand while the right hand plays a series of chords.

35

Measures 35 and 36. Measure 35 features a long, sustained chord in the right hand and a descending eighth-note scale in the left hand. Measure 36 continues the descending scale in the left hand while the right hand plays a series of chords.



For the sake of pursuing love and wisdom,
We came to this world.
It's an endless journey,
For love is limitless,
It will expand forever.

You have the power to spread love.
Let your love expand.
Re-create the world around you with love.
Keep yourself in a state of plenty - be grateful to give, bless everyone around you, enjoy the joy of giving ...
If there are enough people who let their love expand everyday,
The world will change,
The golden age will come!

-Kaiserin Rebecca-