



Tony Wilkinson

Royaume-Uni, Wroxham

Bink's Waltz

Page artiste : https://www.free-scores.com/partitions_gratuites_tonywilkinson.htm

A propos de la pièce



Titre : Bink's Waltz
Compositeur : Joplin, Scott
Droit d'auteur : Creative Commons Licence 3.0
Editeur : Wilkinson, Tony
Instrumentation : Piano seul
Style : 20eme siecle
Commentaire : Typeset score.

Tony Wilkinson sur [free-scores.com](https://www.free-scores.com)



- écouter l'audio
- partager votre interprétation
- commenter la partition
- contacter l'artiste

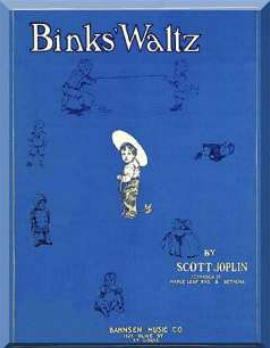
Piano Solo.

Scott Joplin

1867 - 1917



Bink's Waltz



Bink's Waltz

Scott Joplin
1905

Andante ♩ = 144

Piano *mp*

6

12

a poco *mp* *rit.* *a tempo*

18

mf *rit.* *mp* *a tempo*

24 *a tempo*
rit. *mp* *leggiero*
Ped. * Ped. * Ped. * Ped. *

30 *f*
Ped. * Ped. * Ped. * Ped. *

37 *con fuoco* *mf*
Ped. * Ped. * Ped. * Ped. *

43 *con fuoco*
Ped. * Ped. * Ped. * Ped. *

49 *mp* *con fuoco* *mp*
Ped. * Ped. * Ped. * Ped. * Ped. *

56

mp

Ped. *

Ped. *

This system contains measures 56 through 61. The music is in a minor key. The right hand features a melodic line with eighth-note patterns and slurs. The left hand provides harmonic support with chords and moving lines. Pedal points are indicated by 'Ped.' and asterisks at measures 57 and 59.

62

a tempo

rit. poco a poco mp rit.

Ped. *

Ped. *

This system contains measures 62 through 67. The tempo is marked 'a tempo'. The right hand has a melodic line with a 'rit.' marking at measure 67. The left hand has a steady accompaniment. Pedal points are indicated by 'Ped.' and asterisks at measures 65 and 67.

68

a tempo

mf rit. mp

Ped. *

This system contains measures 68 through 73. The tempo is marked 'a tempo'. The right hand has a melodic line with a 'rit.' marking at measure 71. The left hand has a steady accompaniment. Pedal points are indicated by 'Ped.' and an asterisk at measure 73.

74

rit. mp

Ped. *

This system contains measures 74 through 79. The right hand has a melodic line with a 'rit.' marking at measure 77. The left hand has a steady accompaniment. Pedal points are indicated by 'Ped.' and an asterisk at measure 75.

80

a tempo

leggiero

Ped. *

Ped. *

Ped. *

This system contains measures 80 through 85. The tempo is marked 'a tempo' and the style is 'leggiero'. The right hand has a melodic line with accents. The left hand has a steady accompaniment. Pedal points are indicated by 'Ped.' and asterisks at measures 82, 84, and 85.

86 *Grandioso*

mf *cresc.* *f*

Ped. * Ped. * Ped. * Ped. *

92

decresc. *mp* *mf* *cresc.*

Ped. * Ped. * Ped. * Ped. * Ped. * Ped. *

98 *a tempo*

f *rit.* *mf*

Ped. * Ped. * Ped. * Ped. *

104

mf *mp*

Ped. * Ped. *

110 *a tempo*

mp *rit. poco* *a poco*

Ped. *

116 *a tempo*

rit. *Ped.* *

122 *a tempo*

mp *Ped.* *

128 *a tempo*

rit. *leggero*

133 *f sempre* *a tempo*

f sempre *rit. poco a poco* *R.H.* *L.H.* *a tempo* 8va

138 (8) 8va

(8) 8va *adagio* *Fine*