



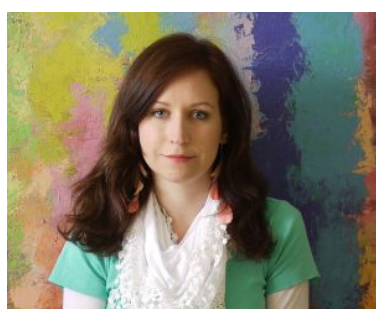
Anna Benediktova

Arrangeur, Interprete, Professeur

Rép. tchèque

Page artiste : https://www.free-scores.com/partitions_gratuites_anniette.htm

A propos de la pièce



Titre : Ona Clear Day (Kiki's Delivery Service)
Compositeur : Hisaishi, Joe
Arrangeur : Benediktova, Anna
Droit d'auteur : Copyright © Anna Benediktova
Editeur : Benediktova, Anna
Instrumentation : Flûte et Guitare
Style : Contemporain

Anna Benediktova sur [free-scores.com](https://www.free-scores.com)



Cette partition ne fait pas partie du domaine public. Merci de contacter l'artiste pour toute utilisation hors du cadre privé.

Interdiction de diffusion sur d'autres sites Web.



- écouter l'audio
- partager votre interprétation
- commenter la partition
- contacter l'artiste

On a Clear Day (Kiki's Delivery Service)

Joe Hisaishi
arr. Anna Benediktová

Flétna

Klasická kytara

8

Detailed description: This system contains the first nine measures of the piece. The flute part (Flétna) is written in treble clef with a key signature of one sharp (F#) and a 3/4 time signature. It features a melodic line with eighth and quarter notes, some with slurs. The classical guitar part (Klasická kytara) is written in treble clef with the same key signature and time signature. It consists of a steady eighth-note accompaniment pattern. A small '8' is written below the first measure of the guitar part.

10

Fl.

Kyt.

8

Detailed description: This system contains measures 10 through 18. The flute part continues its melodic line. The guitar part continues its accompaniment, with some chords becoming more complex in later measures. A small '8' is written below the first measure of the guitar part.

19

Fl.

Kyt.

8

Detailed description: This system contains measures 19 through 27. The flute part has a more active melodic line. The guitar part continues with its accompaniment. A small '8' is written below the first measure of the guitar part.

28

Fl.

Kyt.

8

Detailed description: This system contains measures 28 through 34. The flute part features a more rhythmic and melodic passage. The guitar part continues with its accompaniment. A small '8' is written below the first measure of the guitar part.

35

Fl.

Kyt.

8

Detailed description: This system contains measures 35 through 42. The flute part has a melodic line with some slurs. The guitar part continues with its accompaniment. A small '8' is written below the first measure of the guitar part.

76

Fl.

Kyt.

84

Fl.

Kyt.

93

Fl.

Kyt.

100

Fl.

Kyt.