



# Bernard Dewagtere

France, SIN LE NOBLE

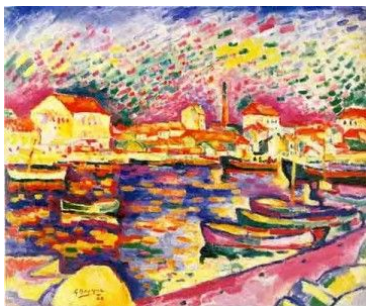
## Au matin (Peer Gynt - Suite No 1, op. 46) Grieg, Edvard

### A propos de l'artiste

Docteur en musicologie, chef d'orchestre et compositeur.  
Compositions et arrangements de toutes époques, dans tous les styles ou genres musicaux et pour n'importe quelles formations instrumentales ou vocales.

**Qualification :** Docteur en Musicologie  
**Sociétaire :** SACEM - Code IPI artiste : 342990  
**Page artiste :** [https://www.free-scores.com/partitions\\_gratuites\\_bernard-dewagtere.htm](https://www.free-scores.com/partitions_gratuites_bernard-dewagtere.htm)

### A propos de la pièce



**Titre :** Au matin  
[Peer Gynt - Suite No 1, op. 46]  
**Compositeur :** Grieg, Edvard  
**Arrangeur :** Dewagtere, Bernard  
**Droit d'auteur :** Copyright © Dewagtere, Bernard  
**Instrumentation :** Accordeon, guitare et/ou piano  
**Style :** Romantique  
**Commentaire :** Suite n° 1, op. 46 (1888) 1. Au matin 2. La mort d'Åse 3. Danse d'Anitra 4. Dans l'ancre du roi de la montagne .  
Suite n° 2 (1891) 1. Lamentations d'Ingrid 2. Danse arabe  
3. Retour de Peer Gynt 4. Chanson de Solveig

### Bernard Dewagtere sur [free-scores.com](https://www.free-scores.com)

#### LICENCE

Cette partition nécessite une autorisation :  
- pour les représentations publiques  
- pour l'utilisation par les professeurs

**S'acquies de cette licence sur :**

<https://www.free-scores.com/licence-partition.php?partition=42677>



- écouter l'audio
- partager votre interprétation
- commenter la partition
- s'acquies de la licence
- contacter l'artiste

Interdiction de diffusion sur d'autres sites Web.

# Morning Mood - Au matin

Peer Gynt - Suite No 1, op. 46

Edvard Grieg (1888)

Transc. : Bernard Dewagtere

Allegretto pastorale  $\text{♩} = 60$

Accordeon

E C#m E

*p*

Piano

*p dolce*

C#m G#

6

Pno

*p*

G#5+ G# C#m

11

Pno

*p*

Morning Mood - Au matin

2  
16

B B7 E

*cresc.* *f*

Pno

22

C#m/E F#m7

*cresc.* *f*

Pno

27

D#dim G#M7 E/G# AM7 F#m G#

*più f*

Pno

31

AM7 F#m A F#m G# A F#m G# A F#m

*p* *ff* *p* *ff* *p*

Pno

Morning Mood - Au matin

36 G# C7 F

Piano score for measures 36-39. The right hand part features a melodic line with slurs and ties, starting with a *p* dynamic and reaching *ff* by measure 38. The left hand part provides harmonic support with chords and a bass line, also starting *p* and reaching *ff*. A *molto* hairpin is shown between the two parts.

40 GbM7 Eb Gb Eb F Gb F Gb

Piano score for measures 40-43. The right hand part has a melodic line with slurs and ties, with dynamics *p*, *ff*, *p*, *ff*, and *p*. The left hand part has a bass line with chords, with dynamics *p*, *ff*, *p*, *ff*, and *p*.

44 F A7 D

Piano score for measures 44-47. The right hand part has a melodic line with slurs and ties, with dynamics *p*, *molto*, and *ff*. The left hand part has a bass line with chords, with dynamics *p*, *molto*, and *ff*.

48 dim. e tranquillo DM7 F

Piano score for measures 48-51. The right hand part has a melodic line with slurs and ties, with dynamics *p* and *mf*. The left hand part has a bass line with chords, with dynamics *p* and *mf*. The instruction *dim. e tranquillo* is present above the first two measures.

Morning Mood - Au matin

4  
52

*dim. e tranquillo* C5+

Pno

52

*dim. e tranquillo*

*p*

56

E/B C#m/G# E/B

Pno

56

*mp*

60

C#m/G# E/B C#m/G# E/B C#m/G#

*pp*

Pno

60

*mp*

64

*tranquillo* E/B A/C# E/B A E/G# A#dim

*p*

Pno

64

*p*

Morning Mood - Au matin

67 *B7/F#* *tr* *E* *E/G#* *A#dim*

Pno

71 *B7/F#* *tr* *E* *B7/F#* *tr* *E* *B7/F#* *tr* *E* *B7/F#* *tr*

Pno

*dim.*

76 *1* *B7* *B7/4* *E* *AM7/E* *E* *AM7/E* *Em/B* *C#m/E*

Pno

*pp* *pp*

*p*

*più tranquillo*

82 *Em/B* *C#m/E* *Em/B* *poco rit.* *C#m/G#* *E*

Pno

*pp* *pp*