

AVE MARIA

BACH - GOUNOD

opr: J. Kowalewski

Andante

Tromba in B

Violino I

Violino II

Viola

Violoncello

Tr. in B

Vno I

Vno II

Vla

Vc

Tr. in B

Vno I

Vno II

Vla

Vc

AVE MARIA

15

Tr. in B

Vno I

Vno II

Vla

Vc

20

Tr. in B

Vno I

Vno II

Vla

Vc

25

Tr. in B

Vno I

Vno II

Vla

Vc

AVE MARIA

30

Tr. in B

Vno I

Vno II

Vla

Vc

34

Tr. in B

Vno I

Vno II

Vla

Vc

38

Tr. in B

Vno I

Vno II

Vla

Vc

rit.

Tromba in B

AVE MARIA

BACH - GOUNOD

opr: J. Kowalewski

Andante



Violino I

AVE MARIA

BACH - GOUNOD

opr: J. Kowalewski

Andante

First line of musical notation, measures 1-3. It begins with a treble clef, a key signature of one flat (B-flat), and a common time signature (C). The first measure starts with a piano (*p*) dynamic marking. The melody features eighth-note patterns with slurs and rests.

Second line of musical notation, measures 4-7. Measure 4 is marked with a '4'. The music continues with eighth-note patterns and rests.

Third line of musical notation, measures 8-11. Measure 8 is marked with an '8'. The music continues with eighth-note patterns and rests.

Fourth line of musical notation, measures 12-16. Measure 12 is marked with a '12'. The music continues with eighth-note patterns and rests.

Fifth line of musical notation, measures 17-21. Measure 17 is marked with a '17'. The music continues with eighth-note patterns and rests.

Sixth line of musical notation, measures 22-26. Measure 22 is marked with a '22'. The music continues with eighth-note patterns and rests.

Seventh line of musical notation, measures 27-32. Measure 27 is marked with a '27'. The music continues with eighth-note patterns and rests.

Eighth line of musical notation, measures 33-37. Measure 33 is marked with a '33'. The music continues with eighth-note patterns and rests.

Ninth line of musical notation, measures 38-41. Measure 38 is marked with a '38'. The music concludes with a *rit.* (ritardando) marking. The final measure ends with a double bar line.

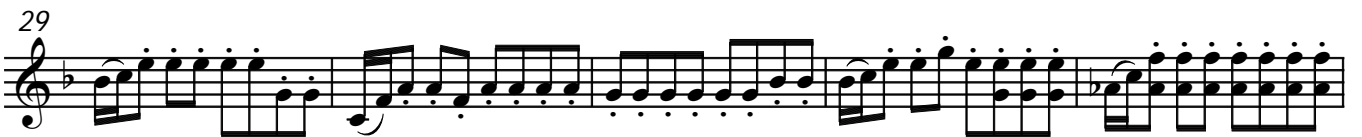
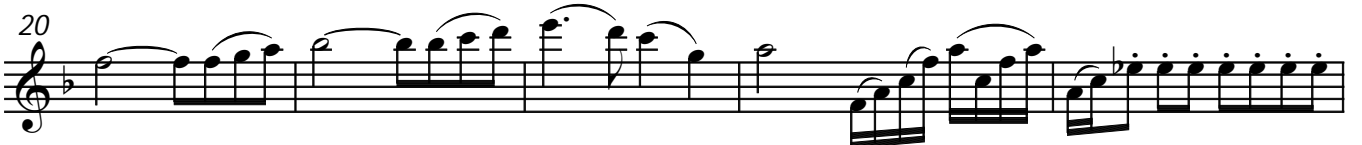
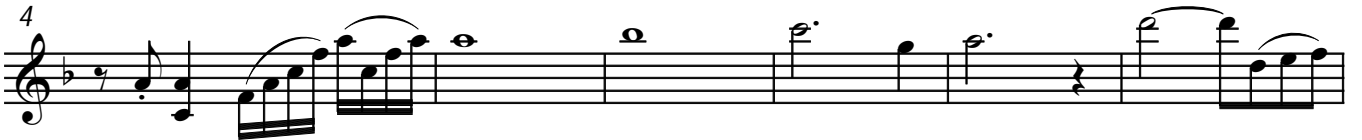
Violino II

AVE MARIA

BACH - GOUNOD

Andante

opr: J. Kowalewski



Viola

AVE MARIA

BACH - GOUNOD

Andante

opr: J. Kowalewski

Measures 1-6 of the Viola part. Measure 1 is a whole rest. Measure 2 begins with a triplet of eighth notes (G4, A4, B4). The piece is in 3/4 time with a key signature of one flat (B-flat major).

Measures 7-10. Measure 7 starts with a quarter note G4. Measures 8-10 continue with eighth and quarter notes, including a half note G4 in measure 10.

Measures 11-14. Measure 11 starts with a quarter note G4. Measures 12-14 feature eighth notes and quarter notes, with a half note G4 in measure 14.

Measures 15-18. Measure 15 starts with a quarter note G4. Measures 16-18 feature eighth notes and quarter notes, with a half note G4 in measure 18.

Measures 19-22. Measure 19 starts with a quarter note G4. Measures 20-22 feature eighth notes and quarter notes, with a half note G4 in measure 22.

Measures 23-26. Measure 23 starts with a quarter note G4. Measures 24-26 feature eighth notes and quarter notes, with a half note G4 in measure 26.

Measures 27-30. Measure 27 starts with a quarter note G4. Measures 28-30 feature eighth notes and quarter notes, with a half note G4 in measure 30.

Measures 31-34. Measure 31 starts with a quarter note G4. Measures 32-34 feature eighth notes and quarter notes, with a half note G4 in measure 34.

Measures 35-38. Measure 35 starts with a quarter note G4. Measures 36-38 feature eighth notes and quarter notes, with a half note G4 in measure 38. The piece concludes with a *rit.* (ritardando) marking.

Violoncello

AVE MARIA

BACH - GOUNOD

opr: J. Kowalewski

Andante



8



16



24



28



34

