



# Pierre Girot

France, LEVALLOIS PERRET

## LE BOIS JOLI II

### A propos de l'artiste

Mélomane depuis l'adolescence, pianiste et compositeur amateur, je compose de petites pièces pour le piano depuis for longtemps.

J'ai une tres grande admiration pour JS Bach, Fauré, Ravel, Debussy entre autres.

Par ailleurs je suis ingénieur chimiste en retraite.

**Page artiste :** [https://www.free-scores.com/partitions\\_gratuites\\_pgrou.htm](https://www.free-scores.com/partitions_gratuites_pgrou.htm)

### A propos de la pièce



<b>Titre :</b>	LE BOIS JOLI II
<b>Compositeur :</b>	Giot, Pierre
<b>Droit d'auteur :</b>	Copyright © Pierre Girot
<b>Instrumentation :</b>	Piano seul
<b>Style :</b>	Classique moderne

Pierre Girot sur [free-scores.com](https://www.free-scores.com)



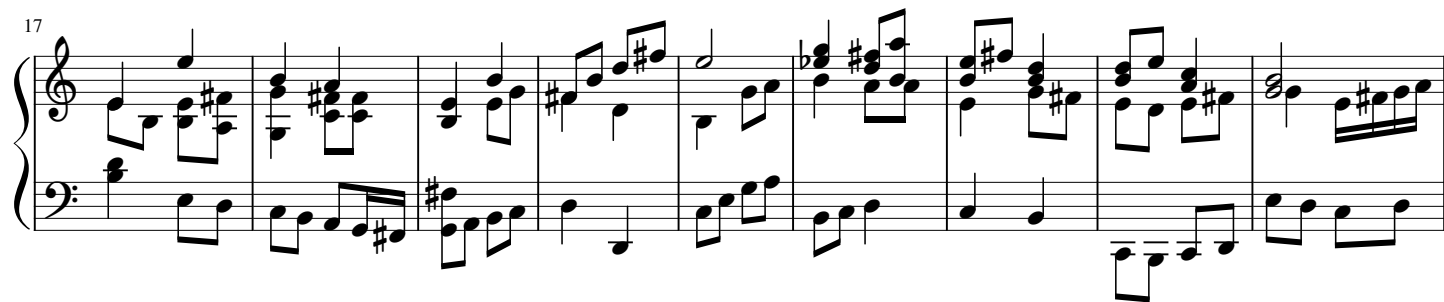
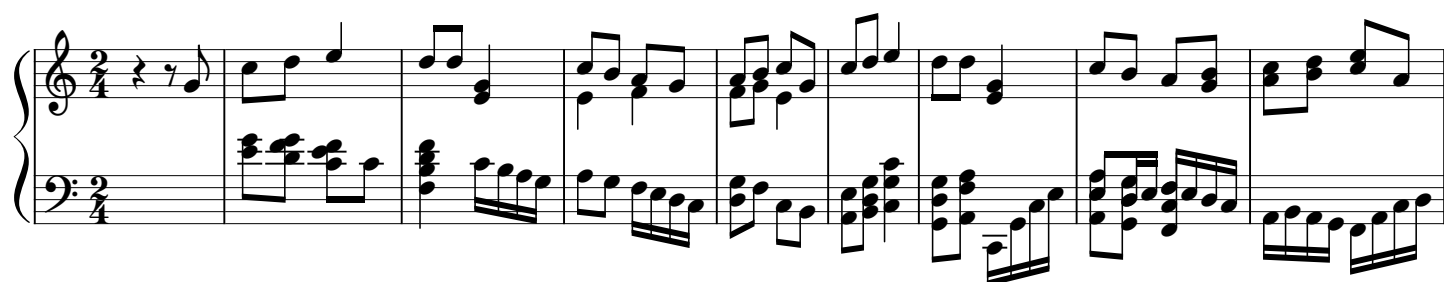
Cette partition ne fait pas partie du domaine public. Merci de contacter l'artiste pour toute utilisation hors du cadre privé.



- écouter l'audio
- partager votre interprétation
- commenter la partition
- contacter l'artiste

# LE BOIS JOLI II

GIROT Pierre



45

Measures 45-48 of a musical score. The key signature has two sharps (F# and C#). Measure 45 features a treble clef with a series of eighth and sixteenth notes, and a bass clef with a similar rhythmic pattern. Measures 46-48 continue the melodic and harmonic development with various chordal textures and moving lines in both staves.

49

Measures 49-51. Measure 49 shows a treble clef with a melodic line and a bass clef with a supporting line. Measure 50 includes a key signature change to one sharp (F#) in the treble staff. Measure 51 continues the piece with complex harmonic structures.

52

Measures 52-57. Measure 52 introduces a 2/4 time signature. Measures 53-57 show a variety of musical textures, including chords, moving lines, and rests, maintaining the one-sharp key signature.

58

Measures 58-63. Measure 58 features a treble clef with a melodic line and a bass clef with a supporting line. Measures 59-63 continue the musical development with various chordal textures and moving lines in both staves.

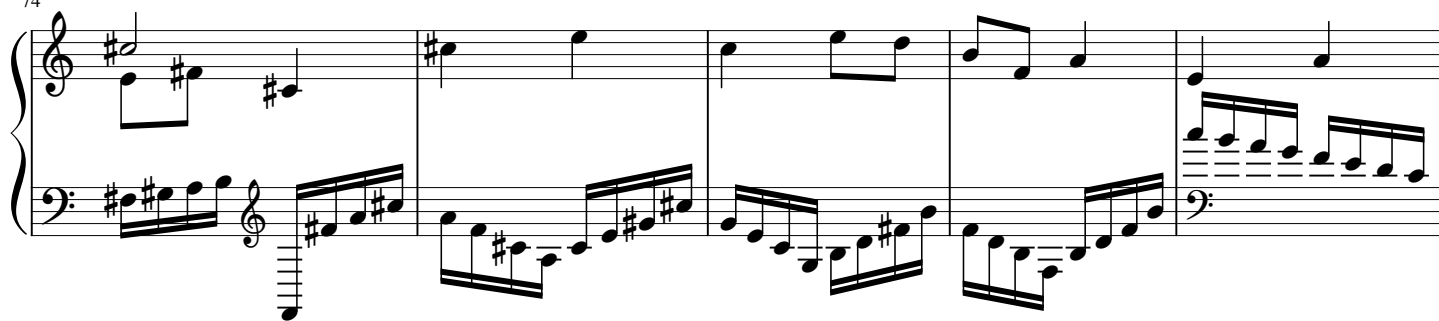
64

Measures 64-68. Measure 64 shows a treble clef with a melodic line and a bass clef with a supporting line. Measures 65-68 continue the musical development with various chordal textures and moving lines in both staves.

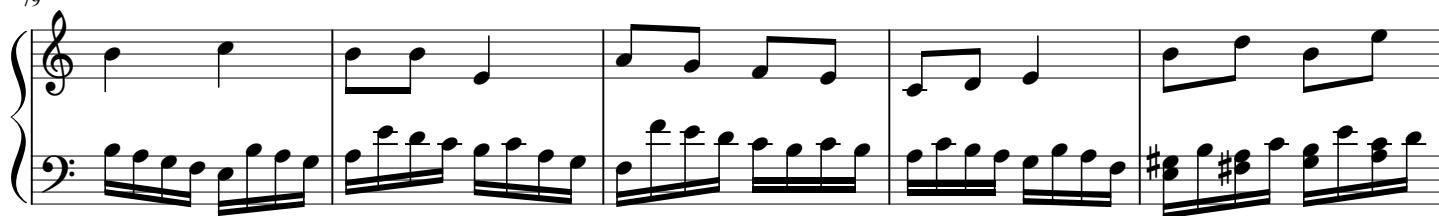
69

Measures 69-73. Measure 69 features a treble clef with a melodic line and a bass clef with a supporting line. Measures 70-73 continue the musical development with various chordal textures and moving lines in both staves.

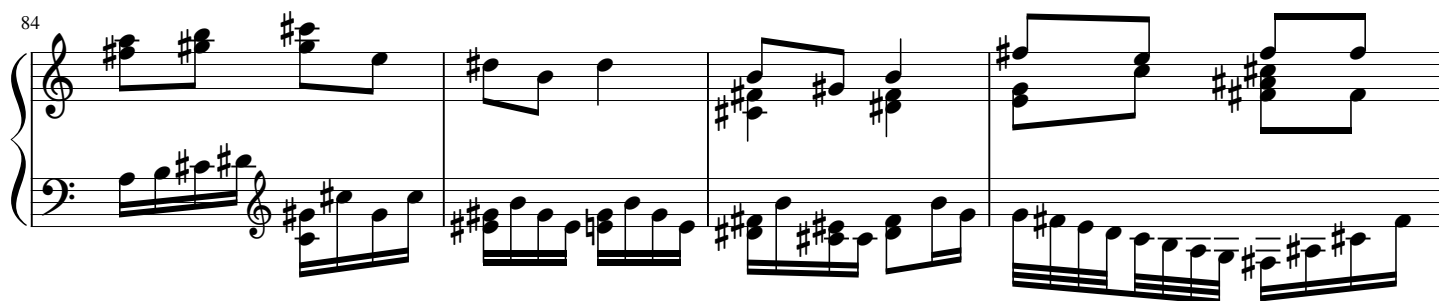
74



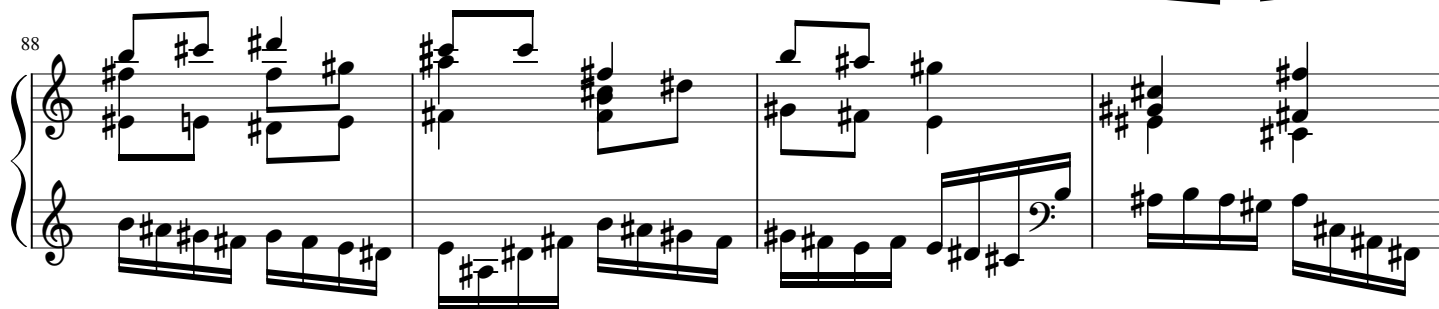
79



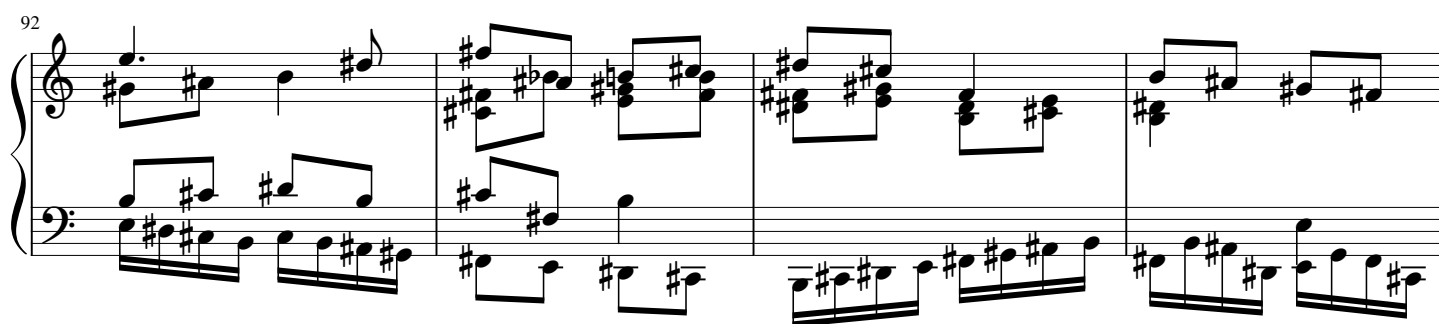
84



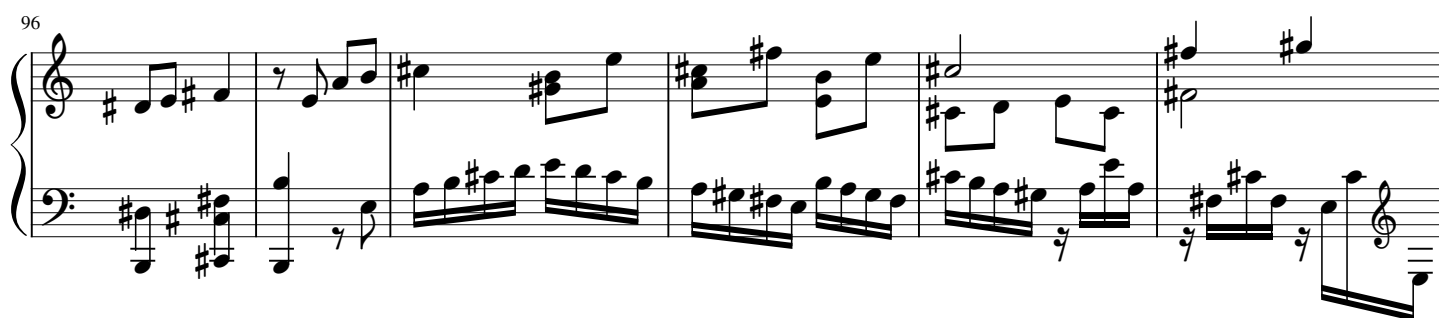
88



92



96



102

Measures 102-106. The right hand features a melody with sharp accidentals, while the left hand plays a rhythmic accompaniment of eighth notes.

107

Measures 107-112. The right hand continues the melody, and the left hand maintains the eighth-note accompaniment.

113

Measures 113-118. The right hand melody becomes more complex with sixteenth-note runs, and the left hand continues the eighth-note accompaniment.

119

Measures 119-124. The right hand features a series of sixteenth-note runs, and the left hand continues the eighth-note accompaniment.

125

Measures 125-130. The right hand continues the sixteenth-note runs, and the left hand continues the eighth-note accompaniment.

130

Measures 130-134. The right hand continues the sixteenth-note runs, and the left hand continues the eighth-note accompaniment.

135

Measures 135-140. The right hand continues the sixteenth-note runs, and the left hand continues the eighth-note accompaniment.

141

Measures 141-145 of a musical score. The treble clef staff contains a melody with eighth and sixteenth notes, including a triplet in measure 141. The bass clef staff features a continuous eighth-note accompaniment. The key signature has one flat (B-flat), and the time signature is 4/4.

146

Measures 146-150 of a musical score. The treble clef staff continues the melody with various note values and rests. The bass clef staff maintains the eighth-note accompaniment. The key signature remains one flat (B-flat), and the time signature is 4/4.

151

Measures 151-154 of a musical score. The treble clef staff features a long, sweeping melodic line with a slur over measures 151 and 152, and a fermata over measure 153. The bass clef staff continues the eighth-note accompaniment. The key signature remains one flat (B-flat), and the time signature is 4/4.