



Roberto Di Girolamo

Italie, Prossedi

I Need You

A propos de l'artiste

Roberto Di Girolamo, composer - Prossedi, Italy, 1959 - started as a saxophonist studying at the Italian Conservatory with Baldo Maestri, during this period he was part of the Gerardo Iacouccis Big Band which performed in the most prestigious clubs in the Capital, with the same he participated in various television programmes. In 1980 a debilitating accident made him a quadriplegic. Not being able to play the saxophone or any other instrument, in 1985 he landed in Composition with Daniele Paris. After a few years for health reasons, he left his academic studies and then continued as a self-taught with the precious advice of Carlo Savina. In 1990 he gave his first concert, entirely with his compositions, with orchestra and solo instruments, and since then other concerts in various genres Jazz, Classic, Contemporary, Sacred music, etc, conceiving and implementing new projects in collaboration with his partner Maki Maria Matsuoka, opera singer. His music have been performed in different... (la suite en ligne)

Sociétaire : SIAE - Code IPI artiste : 00158560160

Page artiste : https://www.free-scores.com/partitions_gratuites_roberto-digirolamo.htm

A propos de la pièce



Titre : I Need You

Compositeur : Di Girolamo, Roberto

Droit d'auteur : Copyright © Italian Way Music

Editeur : Italian Way Music

Instrumentation : Lignes mélodiques, Paroles et Accords (Lead sheet)

Style : Ballade

Roberto Di Girolamo sur [free-scores.com](https://www.free-scores.com)



Cette partition ne fait pas partie du domaine public. Merci de contacter l'artiste pour toute utilisation hors du cadre privé.

Interdiction de diffusion sur d'autres sites Web.



- écouter l'audio
- partager votre interprétation
- commenter la partition
- contacter l'artiste

SCORE IN C

I NEED YOU

LYRICS BY GIOVANNI GIUGLIANO

MUSIC BY ROBERTO DI GIROLAMO

SWING BALLAD

1 C Δ Dm(add4) G7/C Am7 // A7(SUS4) Dm7 Am7 // D7(SUS4) C Δ / Dm(add4) G7



(1) So I can tell The way I feel
(2) What can I tell If I don't try

7 Am7 B7(SUS4) / E7 1. Am7 F9 3 B7(SUS4) / / E7(b9) Am7 / Dm7 Bb9



But tell me a - bout _____ What you need for your smile
Tra - velling a -

11 2. Am7 Dm7/G Cm7/F // D7(SUS4) G Δ / F7(b9) Bb7(b9) F Δ G7(SUS4)



round _____ Some right words to say All the times you fly a -

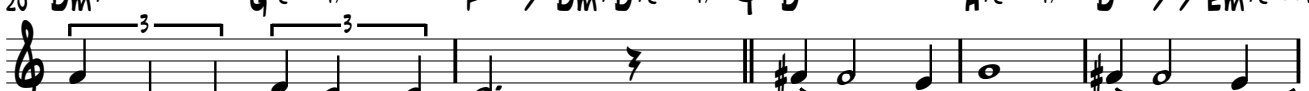
15 C Δ Dm7(add4) F Δ C Δ 9 / G7Eb7 Am7 G7(SUS4) Em7 / D7(SUS4) A9



- way All the times you sleep _____ Why don't you real-ly _____ say
Why don't you real-ly _____ tell

ALLA CODA

20 Dm7 G9(SUS4) F Δ / Dm7 D7(SUS4) D Δ A7(SUS4) D Δ // Em7(add4)

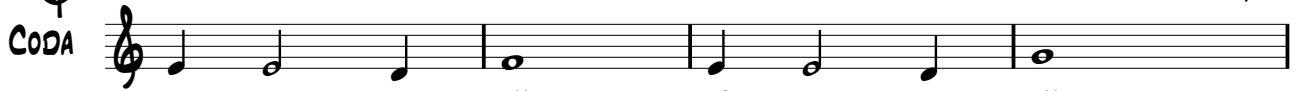


That you don't leave me _____
The mean-ing of your dreams _____

25 Bm7 G Δ / / A7 F#m7 F7(SUS4) Bb Δ / / A7(SUS4) D Δ 9 / B7(SUS4) Bb(SUS4b5)



30 Am7 // A7(SUS4) Dm7 Am7 // D7(SUS4) C Δ / Dm(add4) G7



New ways to tell If we can smile

34 Am7 B7(SUS4) / E7 Am7 D7(SUS4) Dm7/G // Db7(SUS4) C Δ



New ways to be _____ To be - gin a - gain

SCORE IN Bb

I NEED YOU

LYRICS BY GIOVANNI GIUGLIANO

MUSIC BY ROBERTO DI GIROLAMO

SWING BALLAD

1 D^{Δ} $Em^{(add4)}$ $A7/D$ $Bm7$ // $B7(SUS4)$ $Em7$ $Bm7$ // $E7(SUS4)$ D^{Δ} / $Em^{(add4)}$ $A7$

(1) So I can tell The way I feel
(2) What can I tell If I don't try

7 $Bm7$ $C\#7(SUS4)$ / $F\#7$ $Bm7$ G^9 $C\#7(SUS4)$ / / $F\#7(b5)$ $Bm7$ / $Em7$ C^9

But tell me a - bout _____ What you need for your smile
Tra - velling a -

11 $Bm7$ $Em7/A$ $Dm7/G$ // $E7(SUS4)$ A^{Δ} / $G7(b5)$ $C7(b9)$ G^{Δ} $A7(SUS4)$

round _____ Some right words to say All the times you fly a -

15 D^{Δ} $Em7^{(add4)}$ G^{Δ} $D^{\Delta9}$ / $A7$ $F7$ $Bm7$ $A7(SUS4)$ $F\#m7$ / $E7(SUS4)$ B^9

- way All the times you sleep _____ Why don't you real ly _____ say
Why don't you real ly _____ tell

ALLA CODA

20 $Em7$ $A9(SUS4)$ G^{Δ} / $Em7$ $E7(SUS4)$ E^{Δ} $B7(SUS4)$ E^{Δ} // $F\#m7^{(add4)}$

That you don't leave me _____
The mean-ing of your dreams _____

25 $C\#m7$ A^{Δ} / / $B7$ $G\#m7$ $G7(SUS4)$ C^{Δ} / / $B7(SUS4)$ $E^{\Delta9}$ / $C\#7(SUS4)$ $C(SUS4b5)$

30 $Bm7$ // $B7(SUS4)$ $Em7$ $Bm7$ // $E7(SUS4)$ D^{Δ} / $Em^{(add4)}$ $A7$

CODA New ways to tell If we can smile

34 $Bm7$ $C\#7(SUS4)$ / $F\#7$ $Bm7$ $E7(SUS4)$ $Em7/A$ / / $Eb7(SUS4)$ D^{Δ}

New ways to be _____ To be - gin a - gain

I NEED YOU

LYRICS BY GIOVANNI GIUGLIANO

MUSIC BY ROBERTO DI GIROLAMO

SWING BALLAD

1 $A\Delta$ $Bm(add4)$ $E7/A$ $F\#m7$ // $F\#7(SUS4)$ $Bm7$ $F\#m7$ // $B7(SUS4)$ $A\Delta$ / $Bm(add4)$ $E7$

(1) So I can tell The way I feel
 (2) What can I tell If I don't try

7 $F\#m7$ $G\#7(SUS4)$ / $C\#7$ $F\#m7$ $D9$ $G\#7(SUS4)$ / / $C\#7(b5)$ $F\#m7$ / $Bm7$ $G9$

But tell me a - bout _____ What you need for your smile
 Tra - velling a -

11 $F\#m7$ $Bm7/E$ $Am7/D$ // $B7(SUS4)$ $E\Delta$ / $D7(b5)$ $G7(b9)$ $D\Delta$ $E7(SUS4)$

round _____ Some right words to say All the times you fly a -

15 $A\Delta$ $Bm7(add4)$ $D\Delta$ $A\Delta9$ / $E7$ $C7$ $F\#m7$ $E7(SUS4)$ $C\#m7$ / $B7(SUS4)$ $F\#9$

- way All the times you sleep _____ Why don't you real ly _____ say
 Why don't you real ly _____ tell

ALLA CODA

20 $Bm7$ $E9(SUS4)$ $D\Delta$ / $Bm7$ $B7(SUS4)$ $B\Delta$ $F\#7(SUS4)$ $B\Delta$ // $C\#m7(add4)$

That you don't leave me _____
 The mean-ing of your dreams _____

25 $G\#m7$ $E\Delta$ / / $F\#7$ $D\#m7$ $D7(SUS4)$ $G\Delta$ / / $F\#7(SUS4)$ $B\Delta9$ / $G\#7(SUS4)$ $G(SUS4b5)$

30 $F\#m7$ // $F\#7(SUS4)$ $Bm7$ $F\#m7$ // $B7(SUS4)$ $A\Delta$ / $Bm(add4)$ $E7$

CODA

New ways to tell If we can smile

34 $F\#m7$ $G\#7(SUS4)$ / $C\#7$ $F\#m7$ $B7(SUS4)$ $Bm7/E$ // $Bb7(SUS4)$ $A\Delta$

New ways to be _____ To be - gin a - gain