



Guy Bergeron

Canada, Québec

They can't take that away from me (jazz combo) Gershwin, George

A propos de l'artiste

Né dans la ville Québec, Guy Bergeron a fait ses études en guitare classique et jazz ainsi qu'en composition et ce, dans différentes institutions : Cégep de Ste-Foy, Cégep de Drummondville, Université de Montréal et Conservatoire de musique de Québec. Il travaille comme compositeur, arrangeur, chef d'orchestre, professeur, technicien de son et musicien-pigiste (guitare, banjo, mandoline, basse électrique) depuis plus de 20 ans. Il a enregistré, à son studio, les albums et des maquettes d'une centaine de groupes musicaux de la région de Québec. Il a aussi écrit des arrangements et des compositions pour divers ensembles vocaux et instrumentaux. Bref, Guy Bergeron est un passionné de la musique et sa passion l'amène à toucher à une très grande variété de styles de musique.

Qualification : Diplome d'étude collégial en musique.
3e cycle en composition au conservatoire de musique de Québec.

Sociétaire : SOCAN - Code IPI artiste : 206325403

Page artiste : https://www.free-scores.com/partitions_gratuites_guy-bergeron.htm

A propos de la pièce



Titre : They can't take that away from me
[jazz combo]

Compositeur : Gershwin, George

Arrangeur : Bergeron, Guy

Droit d'auteur : Copyright © Bergeron, Guy

Editeur : Bergeron, Guy

Instrumentation : trompette, saxophone ténor, trombone, guitare, basse, batterie

Style : Jazz

Guy Bergeron sur [free-scores.com](https://www.free-scores.com)

LICENCE

Cette partition nécessite une autorisation :

- pour les représentations publiques
- pour l'utilisation par les professeurs

S'acquitter de cette licence sur :

<https://www.free-scores.com/licence-partition.php?partition=55234>



- écouter l'audio
- partager votre interprétation
- commenter la partition
- s'acquitter de la licence
- contacter l'artiste

Interdiction de diffusion sur d'autres sites Web.

2

THAY CAN'T TAKE THAT AWAY FROM ME

B♭ TPT. 9

T. SX. 9

TBN. 9

PNO. 9

BASS 9

D. S. 9

SOLO
mf *mp* *mf* *mf* *mf*

E^b *B^bMIN⁹* *E^b7* *A^bMAJ⁷* *C^b7(45)* *B⁷* *B^b13* *B^b9(45)*

E^b *B^bMIN⁹* *E^b7* *A^bMAJ⁷* *C^b7(45)* *B⁷* *B^b13* *B^b9(45)*

CRASH *FILL*

A2

B♭ TPT. 13

T. SX. 13

TBN. 13

PNO. 13

BASS 13

D. S. 13

mp *mf* *mp*

E^bMAJ⁷ *A^b7* *G^bMIN⁷⁽⁴⁵⁾* *G^bDIM* *F^bMIN¹¹* *B^b13* *C^b13* *B^b13* *B^b9^{SUS}*

E^bMAJ⁷ *A^b7* *G^bMIN⁷⁽⁴⁵⁾* *G^bDIM* *F^bMIN¹¹* *B^b13* *C^b13* *B^b13* *B^b9^{SUS}*

CRASH

THAY CAN'T TAKE THAT AWAY FROM ME

17

B. TPT.

T. SX.

TBN.

PNO.

BASS

D. S.

17

mf

Solo

mf

mp

$E^{\flat 6}$ $B^{\flat} MIN^9$ $E^{\flat 7}$ $A^{\flat 6/9}$ $B^{\flat 13}$ $B^{\flat 13(b9)}$ $E^{\flat 6}$ $D^7(b9)$

$E^{\flat 6}$ $B^{\flat} MIN^9$ $E^{\flat 7}$ $A^{\flat 6/9}$ $B^{\flat 13}$ $B^{\flat 13(b9)}$ $E^{\flat 6}$ $D^7(b9)$

17

(B)

21

B. TPT.

T. SX.

TBN.

PNO.

BASS

D. S.

21

$G MIN^7$ $A MIN^{11(b5)}$ $A^{\flat 7}$ $G MIN^7$ $A MIN^{11(b5)}$ $D^7(b9)$ $G MIN^7$ $A^7(\sharp 5)$ $E^{\flat 9}$ $D^7(\sharp 9)$

$G MIN^7$ $A MIN^{11(b5)}$ $A^{\flat 7}$ $G MIN^7$ $A MIN^{11(b5)}$ $D^7(b9)$ $G MIN^7$ $A^7(\sharp 5)$ $E^{\flat 9}$ $D^7(\sharp 9)$

21

quytarebergeron@videotron.ca

THAY CAN'T TAKE THAT AWAY FROM ME

To CODA

33

B. TPT. SOLO BREAK!

T. SX. SOLO BREAK!

TBN. SOLO BREAK!

PNO. SOLO BREAK!

BASS SOLO BREAK!

D. S. SOLO BREAK!

33

SOLO
mf E^b6 3 B^bMIN⁹ *mp* E^b7 A^b6/9 F^{MIN}7 B^b7(b9) E^b6

AD LIB SOLOS

37

B. TPT. E^bMAJ⁷ A^b7 G^{MIN}7 C⁷ F^{MIN}7 A^b/B^b

T. SX. E^bMAJ⁷ A^b7 G^{MIN}7 C⁷ F^{MIN}7 A^b/B^b

TBN. E^bMAJ⁷ A^b7 G^{MIN}7 C⁷ F^{MIN}7 A^b/B^b

PNO. E^bMAJ⁷ A^b7 G^{MIN}7 C⁷ F^{MIN}7 A^b/B^b

BASS E^bMAJ⁷ A^b7 G^{MIN}7 C⁷ F^{MIN}7 A^b/B^b
SUGGESTED WALKING BASS

D. S. C^{MAJ}7 F⁷ E^{MIN}7 A⁷ D^{MIN}7 F/G

37

6

THAT CAN'T TAKE THAT AWAY FROM ME

B♭ TPT. *E^{b6} B^{bMIN7} E^{b7} A^{bMAJ7} G^{MIN7} C⁷ F^{MIN7} B^{b7}*

T. SX. *E^{b6} B^{bMIN7} E^{b7} A^{bMAJ7} G^{MIN7} C⁷ F^{MIN7} B^{b7}*

TBN. *E^{b6} B^{bMIN7} E^{b7} A^{bMAJ7} G^{MIN7} C⁷ F^{MIN7} B^{b7}*

PNO. *E^{b6} B^{bMIN7} E^{b7} A^{bMAJ7} G^{MIN7} C⁷ F^{MIN7} B^{b7}*

BASS *E^{b6} B^{bMIN7} E^{b7} A^{bMAJ7} G^{MIN7} C⁷ F^{MIN7} B^{b7}*

D. S. *C⁶ G^{MIN7} C⁷ F^{MAJ7} E^{MIN7} A⁷ D^{MIN7} G⁷*

41

B♭ TPT. *E^{bMAJ7} A^{b7} G^{MIN7} C⁷ F^{MIN7} A^{b/B^b}*

T. SX. *E^{bMAJ7} A^{b7} G^{MIN7} C⁷ F^{MIN7} A^{b/B^b}*

TBN. *E^{bMAJ7} A^{b7} G^{MIN7} C⁷ F^{MIN7} A^{b/B^b}*

PNO. *E^{bMAJ7} A^{b7} G^{MIN7} C⁷ F^{MIN7} A^{b/B^b}*

BASS *E^{bMAJ7} A^{b7} G^{MIN7} C⁷ F^{MIN7} A^{b/B^b}*

D. S. *C^{MAJ7} F⁷ E^{MIN7} A⁷ D^{MIN7} F/G*

45

quytarebergeron@videotron.ca

THAY CAN'T TAKE THAT AWAY FROM ME

49

B. TPT. E^{b6} B^{bMIN7} E^{b7} $A^{b6/9}$ B^{b7} E^{b6} $D^{7(b9)}$

T. SX. E^{b6} B^{bMIN7} E^{b7} $A^{b6/9}$ B^{b7} E^{b6} $D^{7(b9)}$

TBN. E^{b6} B^{bMIN7} E^{b7} $A^{b6/9}$ B^{b7} E^{b6} $D^{7(b9)}$

PNO. E^{b6} B^{bMIN7} E^{b7} $A^{b6/9}$ B^{b7} E^{b6} $D^{7(b9)}$

BASS E^{b6} B^{bMIN7} E^{b7} $A^{b6/9}$ B^{b7} E^{b6} $D^{7(b9)}$

D. S. C^b G^{MIN7} C^7 $F^{b/9}$ G^7 C^b $B^{7(b9)}$

49

53

B. TPT. G^{MIN7} $A^{MIN11(b5)}$ $D^{7(b9)}$ G^{MIN7} $A^{MIN11(b5)}$ $D^{7(b9)}$ G^{MIN7} A^7 $D^{7(b9)}$

T. SX. G^{MIN7} $A^{MIN11(b5)}$ $D^{7(b9)}$ G^{MIN7} $A^{MIN11(b5)}$ $D^{7(b9)}$ G^{MIN7} A^7 $D^{7(b9)}$

TBN. G^{MIN7} $A^{MIN11(b5)}$ $D^{7(b9)}$ G^{MIN7} $A^{MIN11(b5)}$ $D^{7(b9)}$ G^{MIN7} A^7 $D^{7(b9)}$

PNO. G^{MIN7} $A^{MIN11(b5)}$ $D^{7(b9)}$ G^{MIN7} $A^{MIN11(b5)}$ $D^{7(b9)}$ G^{MIN7} A^7 $D^{7(b9)}$

BASS G^{MIN7} $A^{MIN11(b5)}$ $D^{7(b9)}$ G^{MIN7} $A^{MIN11(b5)}$ $D^{7(b9)}$ G^{MIN7} A^7 $D^{7(b9)}$

D. S. E^{MIN7} $F^{\#MIN11(b5)}$ $B^{7(b9)}$ E^{MIN7} $F^{\#MIN11(b5)}$ $B^{7(b9)}$ E^{MIN7} $F^{\#7}$ $B^{7(b9)}$

53

8

THAT CAN'T TAKE THAT AWAY FROM ME

B♭ TPT. *G*MIN⁷ *A*MIN^{11(b5)} *D*^{7(b9)} *G*MIN⁷ *C*⁷ *F*⁹ *A*^b/*B*^b

T. SX. *G*MIN⁷ *A*MIN^{11(b5)} *D*^{7(b9)} *G*MIN⁷ *C*⁷ *F*⁹ *A*^b/*B*^b

TBN. *G*MIN⁷ *A*MIN^{11(b5)} *D*^{7(b9)} *G*MIN⁷ *C*⁷ *F*⁹ *A*^b/*B*^b

PNO. *G*MIN⁷ *A*MIN^{11(b5)} *D*^{7(b9)} *G*MIN⁷ *C*⁷ *F*⁹ *A*^b/*B*^b

BASS *G*MIN⁷ *A*MIN^{11(b5)} *D*^{7(b9)} *G*MIN⁷ *C*⁷ *F*⁹ *A*^b/*B*^b

D. S. *E*MIN⁷ *F*[#]MIN^{11(b5)} *B*^{7(b9)} *E*MIN⁷ *A*⁷ *D*⁹ *F*/*G*

57

B♭ TPT. *E*^bMAJ⁷ *A*^b7 *G*MIN⁷ *C*⁷ *F*MIN¹¹ *A*^b/*B*^b

T. SX. *E*^bMAJ⁷ *A*^b7 *G*MIN⁷ *C*⁷ *F*MIN¹¹ *A*^b/*B*^b

TBN. *E*^bMAJ⁷ *A*^b7 *G*MIN⁷ *C*⁷ *F*MIN¹¹ *A*^b/*B*^b

PNO. *E*^bMAJ⁷ *A*^b7 *G*MIN⁷ *C*⁷ *F*MIN¹¹ *A*^b/*B*^b

BASS *E*^bMAJ⁷ *A*^b7 *G*MIN⁷ *C*⁷ *F*MIN¹¹ *A*^b/*B*^b

D. S. *C*MAJ⁷ *F*⁷ *E*MIN⁷ *A*⁷ *D*MIN¹¹ *F*/*G*

61

quytarebergeron@videotron.ca

THAY CAN'T TAKE THAT AWAY FROM ME

65

1

B^b TPT. E^{b6} B^{bMIN^9} E^{b7} $A^{bb/9}$ $FMIN^7$ B^{b7} E^{b6} $FMIN^7$ B^{b7}

T. SX. E^{b6} B^{bMIN^9} E^{b7} $A^{bb/9}$ $FMIN^7$ B^{b7} E^{b6} $FMIN^7$ B^{b7}

T&B. E^{b6} B^{bMIN^9} E^{b7} $A^{bb/9}$ $FMIN^7$ B^{b7} E^{b6} $FMIN^7$ B^{b7}

PNO. E^{b6} B^{bMIN^9} E^{b7} $A^{bb/9}$ $FMIN^7$ B^{b7} E^{b6} $FMIN^7$ B^{b7}

BASS E^{b6} B^{bMIN^9} E^{b7} $A^{bb/9}$ $FMIN^7$ B^{b7} E^{b6} $FMIN^7$ B^{b7}

D. S. C^b $GMIN^9$ C^7 $F^{b/9}$ $DMIN^7$ G^7 C $DMIN^7$ G^7

65

69

2

B^b TPT. $A^{bb/9}$ $AMIN^7(b5)$ D^7 D.S. AL CODA

T. SX. $A^{bb/9}$ $AMIN^7(b5)$ D^7

T&B. $A^{bb/9}$ $AMIN^7(b5)$ D^7

PNO. $A^{bb/9}$ $AMIN^7(b5)$ D^7

BASS $A^{bb/9}$ $AMIN^7(b5)$ D^7

D. S. BREAK

69

quytarebergeron@videotron.ca

TRUMPET IN B \flat

THEY CAN'T TAKE THAT AWAY FROM ME

SWING $\text{♩} = 132$

$\text{♩} = 132$

GEORGE GERSHWIN (1898-1937)

ARR.: GUY BERGERON

f

SAX PICK-UP

mf *mf*

A

A2

B

mp *mf*

A3

To CODA

SOLO BREAK!

33

AD LIB SOLOS

41

FMAJ⁷ B^{b7} AMIN⁷ D⁷ GMIN⁷ B^b/C

45

F^b CMIN⁷ F⁷ B^bMAJ⁷ AMIN⁷ D⁷ GMIN⁷ C⁷

49

FMAJ⁷ B^{b7} AMIN⁷ D⁷ GMIN⁷ B^b/C

53

F^b CMIN⁷ F⁷ B^bb/9 C⁷ F^b E^{7(b9)}

57

AMIN⁷ BMIN^{11(b5)} E^{7(b9)} AMIN⁷ BMIN^{11(b5)} E^{7(b9)} AMIN⁷ B⁷ E^{7(b9)}

61

AMIN⁷ BMIN^{11(b5)} E^{7(b9)} AMIN⁷ D⁷ G⁹ B^b/C

65

FMAJ⁷ B^{b7} AMIN⁷ D⁷ GMIN¹¹ B^b/C

69

F^b CMIN⁹ F⁷ B^bb/9^{1.} GMIN⁷ C⁷ F GMIN⁷ C⁷

71

B^bb/9^{2.} BMIN^{7(b5)} E⁷ D.S. AL CODA

75

TENOR SAX.

THEY CAN'T TAKE THAT AWAY FROM ME

SWING $\text{♩} = 132$

GEORGE GERSHWIN (1898-1937)

ARR.: GUY BERGERON

A Solo *f* *mp* *mf* *mp*

A2 *mf* *mp* *mf* *mp*

B *mf* *mp* *mf* *mp*

A3 Solo *mp* *mf* *mp* *mf* *mp*

To CODA SOLO BREAK!

33

guytorebergeron@videotron.ca

AD LIB SOLOS

41

FMAJ⁷ B^{b7} AMIN⁷ D⁷ GMIN⁷ B^b/C

45

F⁶ CMIN⁷ F⁷ B^bMAJ⁷ AMIN⁷D⁷ GMIN⁷ C⁷

49

FMAJ⁷ B^{b7} AMIN⁷ D⁷ GMIN⁷ B^b/C

53

F⁶ CMIN⁷ F⁷ B^b₉ C⁷ F⁶ E^{7(b9)}

57

AMIN⁷ BMIN^{11(b5)} E^{7(b9)} AMIN⁷ BMIN^{11(b5)} E^{7(b9)} AMIN⁷ B⁷ E^{7(b9)}

61

AMIN⁷ BMIN^{11(b5)} E^{7(b9)} AMIN⁷ D⁷ G⁹ B^b/C

65

FMAJ⁷ B^{b7} AMIN⁷ D⁷ GMIN¹¹ B^b/C

69

F⁶ CMIN⁹ F⁷ B^b₉^{1.} GMIN⁷C⁷ F GMIN⁷ C⁷

71

B^b₉^{2.} BMIN^{7(b5)} E⁷ D.S. AL CODA

75

mf

75

TROMBONE

THEY CAN'T TAKE THAT AWAY FROM ME

SWING $\text{♩} = 132$

GEORGE GERSHWIN (1898-1937)

ARR.: GUY BERGERON

SAX PICK-UP

mf *mp*

A

SOLO

mf *mp*

A2

SOLO

mf *mp*

B

mp *mf* *mp*

A3

SOLO *To CODA* *SOLO BREAK!*

mf *mp*

33

AD LIB SOLOS

E^bMAJ⁷ A^b7 G^{MIN}7 C⁷ F^{MIN}7 A^b/B^b

E^b6 B^bMIN⁷ E^b7 A^bMAJ⁷ G^{MIN}7 C⁷ F^{MIN}7 B^b7

41 E^bMAJ⁷ A^b7 G^{MIN}7 C⁷ F^{MIN}7 A^b/B^b

45 E^b6 B^bMIN⁷ E^b7 A^b6/9 B^b7 E^b6 D^{7(b9)}

49 G^{MIN}7 A^{MIN}11(b5) D^{7(b9)} G^{MIN}7 A^{MIN}11(b5) D^{7(b9)} G^{MIN}7 A⁷ D^{7(b9)}

53 G^{MIN}7 A^{MIN}11(b5) D^{7(b9)} G^{MIN}7 C⁷ F⁹ A^b/B^b

57 E^bMAJ⁷ A^b7 G^{MIN}7 C⁷ F^{MIN}11 A^b/B^b

61 E^b6 B^bMIN⁹ E^b7 A^b6/9^{1.} F^{MIN}7 B^b7 E^b F^{MIN}7 B^b7

65 A^b6/9^{2.} A^{MIN}7(b5) D⁷ D.S. AL CODA

69 *mf*

71 *mf*

75

PIANO

THEY CAN'T TAKE THAT AWAY FROM ME

SWING

♩=132

GEORGE GERSHWIN (1898-1937)

ARR.: GUY BERGERON

f G^{MIN7} C^7 F^7 $B^{b7(b9)}E^{b6}$ B^{b9}_{SUS}

SAX PICK-UP

A E^{bMAJ7} A^{b7} $G^{MIN7(\sharp 5)}$ G^{bDIM} F^{MIN11} B^{b13} C^{b13} B^{b13} G/B^b A^b/B^b

E^{b6} B^{bMIN9} E^{b7} A^{bMAJ7} $C^{b7(\sharp 5)}$ B^{b7} B^{b13} $B^{b9(\sharp 5)}$

A2 E^{bMAJ7} A^{b7} $G^{MIN7(\sharp 5)}$ G^{bDIM} F^{MIN11} B^{b13} C^{b13} B^{b13} B^{b9}_{SUS}

E^{b6} B^{bMIN9} E^{b7} $A^{b6/9}$ B^{b13} $B^{b13(b9)}$ E^{b6} $D^7(b9)$

17

THAY CAN'T TAKE THAT AWAY FROM ME

2
B

GMIN⁷ AMIN^{11(b5)} A^{b7} GMIN⁷ AMIN^{11(b5)} D^{7(b9)} GMIN⁷ A^{7(#5)} E^{b9} D^{7(#9)}

GMIN G^{DIM} GMIN C^{9/E} C^{7(b9)} F⁹ GMIN⁷ G^{#DIM} F^{7/A} B^{b9}_{SUS}

25 *mp* *mf* *mp*

A3

E^bMAJ⁷ A^{b7} GMIN^{7(#5)} G^bDIM FMIN¹¹ B^{b13} C^{b13} B^{b13} G/B^b A^b/B^b

E^{b6} B^bMIN⁹ E^{b7} TO CODA A^{b6/9} FMIN⁷ B^{b7(b9)} E^{b6} SOLO BREAK!

33

AD LIB SOLOS

E^bMAJ⁷ A^{b7} GMIN⁷ C⁷ FMIN⁷ A^b/B^b

E^{b6} B^bMIN⁷ E^{b7} A^bMAJ⁷ GMIN⁷ C⁷ FMIN⁷ B^{b7}

41

E^bMAJ⁷ A^{b7} GMIN⁷ C⁷ FMIN⁷ A^b/B^b

45

THAY CAN'T TAKE THAT AWAY FROM ME

49 E^{b6} B^{bMIN7} E^{b7} $A^{b6/9}$ B^{b7} E^{b6} $D^{7(b9)}$

53 $GMIN7$ $AMIN^{11(b5)}$ $D^{7(b9)}$ $GMIN7$ $AMIN^{11(b5)}$ $D^{7(b9)}$ $GMIN7$ A^7 $D^{7(b9)}$

57 $GMIN7$ $AMIN^{11(b5)}$ $D^{7(b9)}$ $GMIN7$ C^7 F^9 A^b/B^b

61 E^{bMAJ7} A^{b7} $GMIN7$ C^7 $FMIN^{11}$ A^b/B^b

65 E^{b6} B^{bMIN9} E^{b7} $A^{b6/9}$ $FMIN^7$ B^{b7}


68 E^b $FMIN^7$ B^{b7} $A^{b6/9}$ $AMIN^{7(b5)}$ D^7 D.S. AL CODA

71 $A^{b6/9}$ B^{b13} $B^{b13(b9)}$ E^{b6} D^{b13} G^{13} D^{b9} C^9 $C^{7(b9)}$

74 $FMIN^7$ B^{b13} E^b $E^{b6/9}$

BASS GUITAR

THEY CAN'T TAKE THAT AWAY FROM ME


SWING 
♩=132

GEORGE GERSHWIN (1898-1937)

ARR.: GUY BERGERON


f **G^{MIN}7** **C⁷** **F⁷** **B^{b7(b9)E^{b6}}** **B^{b9}SUS**

SAX PICK-UP



mf *mp*

(A) **E^bMAJ⁷** **A^{b7}** **G^{MIN}7(♯5)** **G^bDIM** **F^{MIN}11** **B^{b13}** **C^{b13}** **B^{b13}** **G/B^bA^b/B^b**




E^{b6} **B^bMIN⁹** **E^{b7}** **A^bMAJ⁷** **C^{b7(♯5)}** **B^{b7}** **B^{b13}** **B^{b9(♯5)}**

9



(A2) **E^bMAJ⁷** **A^{b7}** **G^{MIN}7(♯5)** **G^bDIM** **F^{MIN}11** **B^{b13}** **C^{b13}** **B^{b13}** **B^{b9}SUS**



E^{b6} **B^bMIN⁹** **E^{b7}** **A^{b6/9}** **B^{b13}** **B^{b13(b9)}** **E^{b6}** **D^{7(b9)}**

17



(B) **G^{MIN}7** **A^{MIN}11(b5)** **A^{b7}** **G^{MIN}7** **A^{MIN}11(b5)** **D^{7(b9)}** **G^{MIN}7** **A^{7(♯5)}** **E^{b9}** **D^{7(♯9)}**



G^{MIN} **G^bDIM** **G^{MIN}** **C⁹/E^C7(♯5)** **F⁹** **G^{MIN}7** **G[#]DIM** **F⁷/A** **B^{b9}SUS**

25

mp *mf* *mp*



(A3) **E^bMAJ⁷** **A^{b7}** **G^{MIN}7(♯5)** **G^bDIM** **F^{MIN}11** **B^{b13}** **C^{b13}** **B^{b13}** **G/B^bA^b/B^b**



THAY CAN'T TAKE THAT AWAY FROM ME

33
AD LIB SOLOS

SUGGESTED WALKING BASS

THAY CAN'T TAKE THAT AWAY FROM ME

3

65

E^b $B^b_{MIN^9}$ E^b7 $A^b_{6/9}$ F_{MIN^7} B^b7 E^b F_{MIN^7} B^b7

69

2. $A^b_{6/9}$ $A_{MIN^7(b5)}$ D^7 D.S. AL CODA

71

$A^b_{6/9}$ B^b_{13} $B^b_{13(b9)}$ E^b6 D^b_{13} G^{13} D^b9 C^9 $C^7(\frac{b9}{\#5})$ F_{MIN^7} B^b_{13}

mf


75

E^b $E^b_{6/9}$

mp

DRUM SET

THEY CAN'T TAKE THAT AWAY FROM ME

SWING 
♩=132

GEORGE GERSHWIN (1898-1937)

ARR.: GUY BERGERON



SAX PICK-UP

DRUMS SOLO

FILL

mf *mp*

(A)

9

(A2)

17

(B)

25

(A3)

To CODA

SOLO BREAK!



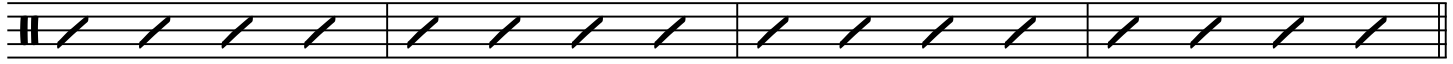
33

AD LIB SOLOS

C MAJ⁷ F⁷ E MIN⁷ A⁷ D MIN⁷ F/G

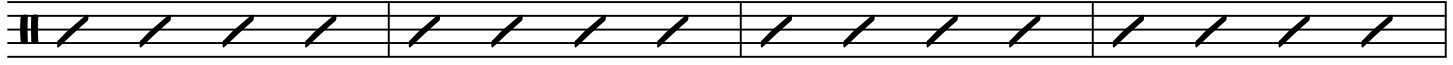


C⁶ G MIN⁷ C⁷ F MAJ⁷ E MIN⁷ A⁷ D MIN⁷ G⁷



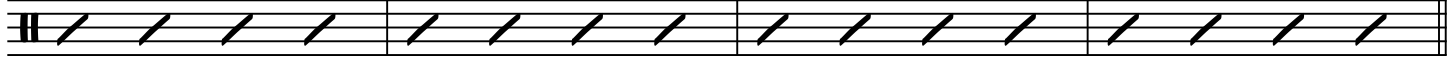
41

C MAJ⁷ F⁷ E MIN⁷ A⁷ D MIN⁷ F/G



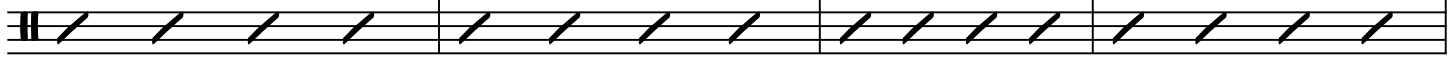
45

C⁶ G MIN⁷ C⁷ F^{6/9} G⁷ C⁶ B^{7(b9)}



49

E MIN⁷ F# MIN^{11(b5)} B^{7(b9)} E MIN⁷ F# MIN^{11(b5)} B^{7(b9)} E MIN⁷ F#⁷ B^{7(b9)}



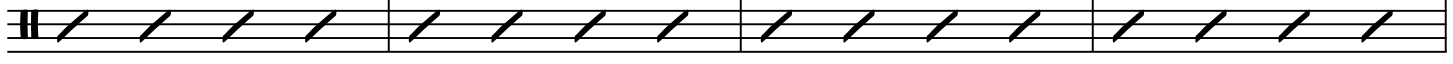
53

E MIN⁷ F# MIN^{11(b5)} B^{7(b9)} E MIN⁷ A⁷ D⁹ F/G



57

C MAJ⁷ F⁷ E MIN⁷ A⁷ D MIN¹¹ F/G

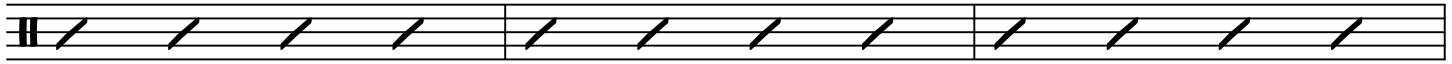


61

THAY CAN'T TAKE THAT AWAY FROM ME

3

C^b G^{MIN}9 C⁷ F^b9 D^{MIN}7 G⁷



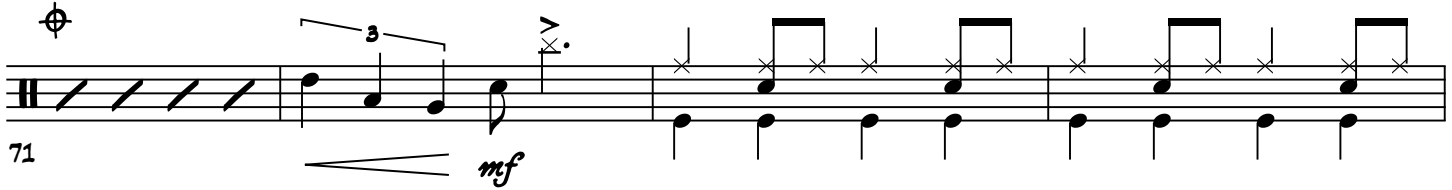
65

C D^{MIN}7 G⁷ 2. BREAK D.S. AL CODA



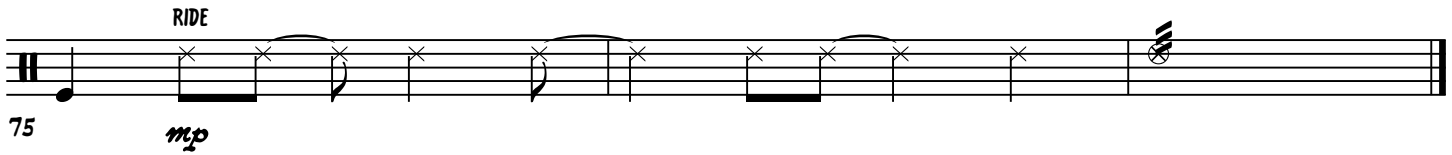
68

mf



71

RIDE mp



75