



Mike Magatagan

États-Unis, SierraVista

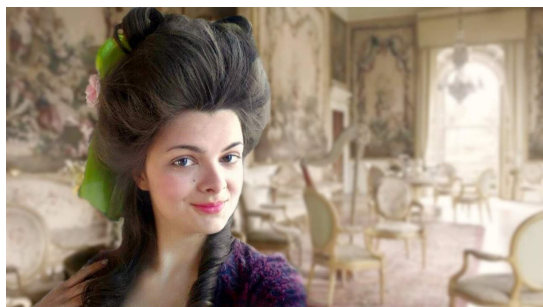
Suite No.1 in A Major from Six Suites de Clavessin for String Quartet Dieupart, Charles

A propos de l'artiste

Je suis ingénieur programmeur. À l'origine, je suis un geek, qui aime résoudre les problèmes. J'ai développé des logiciels les 25 dernières années, mais mon amour pour la musique a récemment été ravivé.

Page artiste : https://www.free-scores.com/partitions_gratuites_magataganm.htm

A propos de la pièce



Titre :	Suite No.1 in A Major from Six Suites de Clavessin for String Quartet
Compositeur :	Dieupart, Charles
Arrangeur :	Magatagan, Mike
Droit d'auteur :	Public Domain
Editeur :	Magatagan, Mike
Instrumentation :	Quatuor à cordes
Style :	Baroque

Mike Magatagan sur [free-scores.com](https://www.free-scores.com)



- écouter l'audio
- partager votre interprétation
- commenter la partition
- contacter l'artiste



Suite No.1 in A Major

from "Six Suites de Clavessin"

Charles François Dieupart (1667 - 1740)

Interpretation for String Quartet by Mike Magatagan 2020

I. Ouverture (Grave $\text{♩} = 80$)

Violin 1 *mf*

Violin 2 *mf*

Viola *mf*

Cello *mf*

V1 *tr*

V2

Va

Vc

V1 *tr* 1. 2.

V2

Va

Vc

21 **Allegro** (♩ = 140)

27

33

39

V1

V2

Va

Vc

44

V1

V2

Va

Vc

50

Tempo I

V1

V2

Va

Vc

60

V1

V2

Va

Vc

tr

1. *accel.*

2.

II. Allemande (♩ = 60)

Violin 1

Violin 2

Viola

Cello

mf

tr

tr

mf

5

V1

V2

Va

Vc

tr

8

V1

V2

Va

Vc

1.

2.

13

V1

V2

Va

Vc

tr

17

V1

V2

Va

Vc

20

V1
V2
Va
Vc

23

V1
V2
Va
Vc

27

V1
V2
Va
Vc

1. 2.

III. Courante (♩ = 60)

Musical score for Violin 1, Violin 2, Viola, and Cello, measures 1-5. The score is in A major (three sharps) and 3/4 time. The tempo is marked as ♩ = 60. The dynamic is *mf*. The Violin 1 part features a melodic line with grace notes and slurs. The Violin 2 part has a more rhythmic accompaniment. The Viola and Cello parts provide harmonic support with sustained notes and moving lines.

Musical score for Violin 1, Violin 2, Viola, and Cello, measures 6-10. The score continues from the previous system. It includes first and second endings (1. and 2.) for the Violin 1 part. The dynamic remains *mf*. The Violin 1 part has a trill (tr) in measure 8. The Viola and Cello parts continue their accompaniment.

Musical score for Violin 1, Violin 2, Viola, and Cello, measures 11-15. The score continues from the previous system. It includes a trill (tr) in the Violin 1 part in measure 11. The dynamic remains *mf*. The Violin 1 part has a grace note in measure 12. The Viola and Cello parts continue their accompaniment.

18

V1

V2

Va

Vc

1.

2.

IV. Sarabande ($\text{♩} = 50$)

Violin 1

Violin 2

Viola

Cello

mf

mf

mf

mf

1.

2.

10

V1

V2

Va

Vc

18

V1
V2
Va
Vc

V. Gavotte (♩ = 120)

Violin 1
Violin 2
Viola
Cello

9

V1
V2
Va
Vc

17

1. 2. rit.

V1

V2

Va

Vc

VI. Menuet (♩ = 130)

Violin 1

Violin 2

Viola

Cello

9

V1

V2

Va

Vc

17

V1

V2

Va

Vc

1.

2.

rit.

tr

VII. Gigue (♩ = 94)

Violin 1

Violin 2

Viola

Cello

mf

mf

mf

mf

9

V1

V2

Va

Vc

1.

2.

tr

16

Score for measures 16-23. The system includes four staves: V1 (Violin I), V2 (Violin II), Va (Viola), and Vc (Violoncello). The key signature is A major (three sharps). Measure 16 starts with a repeat sign. V1 has a melodic line with accents and slurs. V2 and Va have rhythmic accompaniment. Vc has a bass line with slurs and accents.

24

Score for measures 24-31. The system includes four staves: V1, V2, Va, and Vc. Measure 24 features a trill in V1. The music continues with rhythmic patterns in all parts, including slurs and accents.

32

Score for measures 32-39. The system includes four staves: V1, V2, Va, and Vc. Measure 32 starts with a repeat sign. The first ending (1.) leads to a double bar line, and the second ending (2.) concludes the piece with a fermata. Performance markings include *rit.* and *tr.*

Violin 1

Suite No.1 in A Major

from "Six Suites de Clavessin"

Charles François Dieupart (1667 - 1740)

I. Overture (Grave ♩ = 80)

Interpretation for String Quartet by Mike Magatagan 2020

mf

12

tr 1. 2.

Allegro (♩ = 140)

21

28

tr

35

43

tr

Tempo I

50

62

tr accel. 1. 2.

II. Allemande (♩ = 60)

mf

6

tr 1. 2.

13

20

26

III. Courante (♩ = 60)

mf

6

11

19

IV. Sarabande (♩ = 50)

mf

10

19

V. Gavotte (♩ = 120)

mf

9

VI. Menuet (♩ = 130)

mf

tr

Detailed description: This system contains the first eight measures of the Minuet. It begins with a treble clef, a key signature of three sharps (F#, C#, G#), and a 3/4 time signature. The music starts with a half note G4, followed by quarter notes A4 and B4, each with a fermata. The next measure is a whole note G4. Measures 3-8 feature a sequence of quarter notes: A4, B4, A4, G4, F#4, E4, D4, and C4. A trill is placed over the final C4 note.

tr

Detailed description: This system contains measures 9-17. It begins with a repeat sign. Measures 9-10 are quarter notes G4 and A4 with fermatas. Measure 11 is a half note G4 with a fermata. Measures 12-13 are quarter notes A4 and B4 with fermatas. Measure 14 is a half note G4. Measures 15-17 are quarter notes: A4, B4, A4, G4, F#4, E4, D4, and C4. A trill is placed over the final C4 note.

tr

rit.

1. 2.

Detailed description: This system contains measures 18-24. Measures 18-19 are quarter notes G4 and A4 with fermatas. Measure 20 is a half note G4 with a fermata. Measures 21-22 are quarter notes A4 and B4 with fermatas. Measure 23 is a half note G4. Measure 24 is a quarter note C4 with a trill. The system concludes with a first ending (1.) and a second ending (2.) over a whole note G4.

VII. Gigue (♩ = 94)

mf

Detailed description: This system contains the first seven measures of the Gigue. It begins with a treble clef, a key signature of three sharps (F#, C#, G#), and a 6/8 time signature. The music starts with a quarter rest, followed by eighth notes G4 and A4. Measures 2-7 feature a sequence of eighth notes: G4, A4, B4, A4, G4, F#4, E4, D4, and C4. Fermatas are placed over the final notes of measures 2, 4, 6, and 7.

tr

1. 2.

Detailed description: This system contains measures 8-15. Measures 8-9 are eighth notes G4 and A4 with fermatas. Measure 10 is a quarter note B4 with a fermata. Measures 11-12 are eighth notes: G4, A4, B4, A4, G4, F#4, E4, and D4, each with a fermata. Measure 13 is a quarter note C4 with a trill. Measure 14 is a quarter note G4. Measure 15 is a quarter note G4. The system concludes with a first ending (1.) and a second ending (2.) over a quarter note G4.

Detailed description: This system contains measures 16-22. Measures 16-17 are quarter notes G4 and A4 with fermatas. Measures 18-19 are eighth notes: G4, A4, B4, A4, G4, F#4, E4, and D4, each with a fermata. Measures 20-21 are eighth notes: G4, A4, B4, A4, G4, F#4, E4, and D4. Measure 22 is a quarter note C4 with a fermata.

tr

Detailed description: This system contains measures 23-30. Measures 23-24 are eighth notes: G4, A4, B4, A4, G4, F#4, E4, and D4, each with a fermata. Measure 25 is a quarter note C4 with a trill. Measures 26-27 are eighth notes: G4, A4, B4, A4, G4, F#4, E4, and D4, each with a fermata. Measures 28-29 are eighth notes: G4, A4, B4, A4, G4, F#4, E4, and D4. Measure 30 is a quarter note G4 with a fermata.

rit.

tr

1. 2.

Detailed description: This system contains measures 31-38. Measures 31-32 are eighth notes: G4, A4, B4, A4, G4, F#4, E4, and D4. Measures 33-34 are eighth notes: G4, A4, B4, A4, G4, F#4, E4, and D4, each with a fermata. Measures 35-36 are eighth notes: G4, A4, B4, A4, G4, F#4, E4, and D4. Measure 37 is a quarter note G4 with a trill. Measure 38 is a quarter note G4. The system concludes with a first ending (1.) and a second ending (2.) over a quarter note G4.

Violin 2

Suite No.1 in A Major

from "Six Suites de Clavessin"

Charles François Dieupart (1667 - 1740)

Interpretation for String Quartet by Mike Magatagan 2020

I. Overture (Grave ♩ = 80)

mf

Allegro (♩ = 140)

mf

Tempo I

mf

II. Allemande (♩ = 60)

mf

mf

III. Courante (♩ = 60)

mf

mf

IV. Sarabande (♩ = 50)

Musical notation for IV. Sarabande, measures 1-9. The piece is in A major (two sharps) and 3/4 time. It begins with a whole rest, followed by a quarter note G4, a quarter note A4, and a quarter note B4. A fermata covers measures 2-3. The melody continues with a quarter note G4, a quarter note F#4, a quarter note E4, and a quarter note D4. The piece concludes with a first ending (1.) and a second ending (2.), both consisting of a whole note G4.

Musical notation for IV. Sarabande, measures 10-18. The melody continues with a quarter note C4, a quarter note B3, a quarter note A3, and a quarter note G3. A fermata covers measures 11-12. The melody continues with a quarter note G3, a quarter note F#3, a quarter note E3, and a quarter note D3. The piece concludes with a first ending (1.) and a second ending (2.), both consisting of a whole note G3.

V. Gavotte (♩ = 120)

Musical notation for V. Gavotte, measures 1-8. The piece is in A major (two sharps) and 2/4 time. It begins with a whole rest, followed by a quarter note G4, a quarter note A4, a quarter note B4, and a quarter note C5. The melody continues with a quarter note B4, a quarter note A4, a quarter note G4, and a quarter note F#4. The piece concludes with a first ending (1.) and a second ending (2.), both consisting of a whole note G4.

Musical notation for V. Gavotte, measures 9-17. The melody continues with a quarter note E4, a quarter note D4, a quarter note C4, and a quarter note B3. A fermata covers measures 10-11. The melody continues with a quarter note A3, a quarter note G3, a quarter note F#3, and a quarter note E3. The piece concludes with a first ending (1.) and a second ending (2.), both consisting of a whole note G3, with a *rit.* marking above the first ending.

VI. Menuet (♩ = 130)

Musical notation for VI. Menuet, measures 1-8. The piece is in A major (two sharps) and 3/4 time. It begins with a quarter note G4, a quarter note A4, and a quarter note B4. The melody continues with a quarter note C5, a quarter note B4, a quarter note A4, and a quarter note G4. The piece concludes with a first ending (1.) and a second ending (2.), both consisting of a whole note G4.

Musical notation for VI. Menuet, measures 9-17. The melody continues with a quarter note F#4, a quarter note E4, a quarter note D4, and a quarter note C4. A fermata covers measures 10-11. The melody continues with a quarter note B3, a quarter note A3, a quarter note G3, and a quarter note F#3. The piece concludes with a first ending (1.) and a second ending (2.), both consisting of a whole note G3, with a *rit.* marking above the first ending.

VII. Gigue (♩ = 94)

Musical notation for VII. Gigue, measures 1-9. The piece is in A major (two sharps) and 6/8 time. It begins with a quarter rest, followed by an eighth note G4, an eighth note A4, and a quarter note B4. The melody continues with an eighth note C5, an eighth note B4, and a quarter note A4. A fermata covers measures 2-3. The melody continues with an eighth note G4, an eighth note F#4, and a quarter note E4. The piece concludes with a first ending (1.) and a second ending (2.), both consisting of a quarter note G4.

Musical notation for VII. Gigue, measures 10-15. The melody continues with an eighth note D4, an eighth note C4, and a quarter note B3. The melody continues with an eighth note A3, an eighth note G3, and a quarter note F#3. The piece concludes with a first ending (1.) and a second ending (2.), both consisting of a quarter note G3.

Musical notation for VII. Gigue, measures 16-33. The melody continues with an eighth note E3, an eighth note D3, and a quarter note C3. A fermata covers measures 17-18. The melody continues with an eighth note B2, an eighth note A2, and a quarter note G2. The piece concludes with a first ending (1.) and a second ending (2.), both consisting of a quarter note G2.

Musical notation for VII. Gigue, measures 34-41. The melody continues with an eighth note F#2, an eighth note E2, and a quarter note D2. The melody continues with an eighth note C2, an eighth note B1, and a quarter note A1. The piece concludes with a first ending (1.) and a second ending (2.), both consisting of a quarter note G1, with a *rit.* marking above the first ending.

Viola

Suite No.1 in A Major

from "Six Suites de Clavessin"

Charles François Dieupart (1667 - 1740)

Interpretation for String Quartet by Mike Magatagan 2020

I. Ouverture (Grave ♩ = 80)

mf

12

1. 2.

Allegro (♩ = 140)

21

32

7

Tempo I

50

accel. 1. 2.

II. Allemande (♩ = 60)

mf

7

1. 2.

13

22

1. 2.

III. Courante (♩ = 60)

mf

11

IV. Sarabande (♩ = 50)

V. Gavotte (♩ = 120)

VI. Menuet (♩ = 130)

VII. Gigue (♩ = 94)

Cello

Suite No.1 in A Major

from "Six Suites de Clavessin"

Charles François Dieupart (1667 - 1740)

I. Overture (Grave ♩ = 80)

Interpretation for String Quartet by Mike Magatagan 2020

mf

11

3 1. 2.

Allegro (♩ = 140)

21

3

33

41

Tempo I

50

60

accel. 1. 2.

II. Allemande (♩ = 60)

mf

5

9

1. 2.

13

20

25

III. Courante (♩ = 60)

7

11

19

IV. Sarabande (♩ = 50)

10

22

V. Gavotte (♩ = 120)

9

rit.

VI. Menuet (♩ = 130)

mf

9

17

rit.

VII. Gigue (♩ = 94)

mf

10

16

22

27

33

rit.