



Bernard Dewagtere

France, SIN LE NOBLE

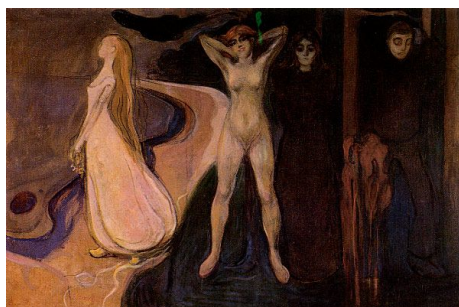
6 duos à Edvard Munch (4. Woman in Three Stages)

A propos de l'artiste

Docteur en musicologie, chef d'orchestre et compositeur.
Compositions et arrangements de toutes époques, dans tous les styles ou genres musicaux et pour n'importe quelles formations instrumentales ou vocales.

Qualification : Docteur en Musicologie
Sociétaire : SACEM - Code IPI artiste : 342990
Page artiste : https://www.free-scores.com/partitions_gratuites_bernard-dewagtere.htm

A propos de la pièce



Titre : 6 duos à Edvard Munch
[4. Woman in Three Stages]
Compositeur : Dewagtere, Bernard
Droit d'auteur : Copyright © Dewagtere, Bernard
Instrumentation : 2 Violoncelles (duo)
Style : 20eme siecle
Commentaire : Femme en trois étapes, 1894 - Huile sur toile 164 x 250 cm

Bernard Dewagtere sur [free-scores.com](https://www.free-scores.com)

LICENCE

Cette partition nécessite une autorisation :
- pour les représentations publiques
- pour l'utilisation par les professeurs

S'acquitter de cette licence sur :

<https://www.free-scores.com/licence-partition.php?partition=41787>



- écouter l'audio
- partager votre interprétation
- commenter la partition
- s'acquitter de la licence
- contacter l'artiste

Interdiction de diffusion sur d'autres sites Web.

6 duets for Edvard Munch

4. Woman in Three Stages

Bernard Dewagtere

Allegretto

Cello 1

Cello 2

mf

mf

mf

1

2

sf

mp

p

sf

mp

p

11

1

2

f

f

mf

mp

16

1

2

mf

pp

rit.

molto rit.

6 duets for Edvard Munch

2
22 **Moderato**

1 *mf*

2 *mf* *mp*

Detailed description: This system covers measures 22 to 25. The first staff (labeled '1') begins with a dynamic marking of *mf*. The second staff (labeled '2') starts with an accent (<) and *mf*, then transitions to *mp* in measure 25. The music features a mix of eighth and sixteenth notes with various articulations.

26

1 *mf* *sf* *mp*

2 *mf* *mp* *sf* *mp*

Detailed description: This system covers measures 26 to 29. The first staff (labeled '1') has dynamics of *mf*, *sf*, and *mp*. The second staff (labeled '2') has dynamics of *mf*, *mp*, *sf*, and *mp*. The music continues with eighth and sixteenth notes, including some slurs and accents.

31

1 *p* *f* *tr*

2 *p* *f* *mf* *mp*

Detailed description: This system covers measures 31 to 34. The first staff (labeled '1') has dynamics of *p*, *f*, and includes trills (*tr*) in measures 33 and 34. The second staff (labeled '2') has dynamics of *p*, *f*, *mf*, and *mp*. The music features sixteenth-note passages and trills.

37

1 *mp* *pp*

2 *pp*

loco *rit.* *molto rit.* *Con sord.*

Detailed description: This system covers measures 37 to 40. The first staff (labeled '1') has dynamics of *mp* and *pp*. The second staff (labeled '2') has a dynamic of *pp*. Performance instructions include *loco*, *rit.*, *molto rit.*, and *Con sord.* (Con sordano). The music consists of slower-moving notes with a final key signature change to two sharps.

Grave

43

1
Con sord. *p*

2
p *mp*

Detailed description: This system covers measures 43 to 46. The first staff (treble clef) begins with a piano (*p*) dynamic and includes the instruction 'Con sord.' (con sordina). It features a rhythmic pattern of eighth notes with accents. The second staff (bass clef) provides a harmonic accompaniment with a piano (*p*) dynamic, transitioning to mezzo-piano (*mp*) in measure 45. A double bar line is present between measures 44 and 45.

47

1
p

2
p *p*

Detailed description: This system covers measures 47 to 50. The first staff (treble clef) continues with a piano (*p*) dynamic. The second staff (bass clef) also maintains a piano (*p*) dynamic. A double bar line is present between measures 48 and 49.

51

1
p *pp* *rall.*

2
p *pp*

Detailed description: This system covers measures 51 to 54. The first staff (treble clef) shows a dynamic shift from piano (*p*) to pianissimo (*pp*) and includes the instruction 'rall.' (rallentando). The second staff (bass clef) also shifts from piano (*p*) to pianissimo (*pp*). A double bar line is present between measures 52 and 53.

55

1
mp

2
mp *p* *pp* *morendo*

Detailed description: This system covers measures 55 to 58. The first staff (treble clef) has a mezzo-piano (*mp*) dynamic. The second staff (bass clef) starts with mezzo-piano (*mp*), then moves to piano (*p*) and pianissimo (*pp*), ending with the instruction 'morendo' (morendo). A double bar line is present between measures 56 and 57.