



Bernard Dewagtere

France, SIN LE NOBLE

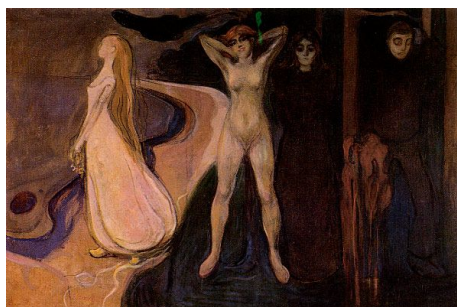
6 duos à Edvard Munch (4. Woman in Three Stages)

A propos de l'artiste

Docteur en musicologie, chef d'orchestre et compositeur.
Compositions et arrangements de toutes époques, dans tous les styles ou genres musicaux et pour n'importe quelles formations instrumentales ou vocales.

Qualification : Docteur en Musicologie
Sociétaire : SACEM - Code IPI artiste : 342990
Page artiste : https://www.free-scores.com/partitions_gratuites_bernard-dewagtere.htm

A propos de la pièce



Titre : 6 duos à Edvard Munch
[4. Woman in Three Stages]
Compositeur : Dewagtere, Bernard
Droit d'auteur : Copyright © Dewagtere, Bernard
Instrumentation : 2 Bassons (duo)
Style : 20eme siecle
Commentaire : Femme en trois étapes, 1894 - Huile sur toile 164 x 250 cm

Bernard Dewagtere sur [free-scores.com](https://www.free-scores.com)

LICENCE

Cette partition nécessite une autorisation :
- pour les représentations publiques
- pour l'utilisation par les professeurs

S'acquitter de cette licence sur :

<https://www.free-scores.com/licence-partition.php?partition=41783>



- écouter l'audio
- partager votre interprétation
- commenter la partition
- s'acquitter de la licence
- contacter l'artiste

Interdiction de diffusion sur d'autres sites Web.

6 duets for Edvard Munch

4. Woman in Three Stages

Bernard Dewagtere

Allegretto

Bassoon 1

Bassoon 2

mf

mf

mf

1

2

sf

mp

p

sf

mp

p

11

1

2

f

f

mf

mp

16

1

2

mf

rit.

molto rit.

pp

6 duets for Edvard Munch

2
22

Moderato

1 *mf*

2 *mf* *mp*

Detailed description: This system covers measures 22 to 25. The first staff (labeled '1') begins with a dynamic marking of *mf*. The second staff (labeled '2') starts with an accent (>) and *mf*, then transitions to *mp* in the third measure. The music features eighth-note patterns in the first staff and more complex rhythmic figures in the second staff.

26

1 *mf* *sf* *mp*

2 *mf* *mp* *sf* *mp*

Detailed description: This system covers measures 26 to 29. The first staff (labeled '1') has dynamics of *mf*, *sf*, and *mp*. The second staff (labeled '2') has dynamics of *mf*, *mp*, *sf*, and *mp*. The music continues with similar rhythmic patterns and includes some slurs and accents.

31

1 *p* *f* *tr*

2 *p* *f* *mf* *mp*

Detailed description: This system covers measures 31 to 36. The first staff (labeled '1') starts with *p*, then *f*, and includes trills (*tr*) in the final two measures. The second staff (labeled '2') starts with *p*, then *f*, *mf*, and *mp*. There are slurs and accents throughout the system.

37

loco rit. molto rit

1 *mp* *pp*

2 *pp*

Detailed description: This system covers measures 37 to 40. The first staff (labeled '1') has dynamics of *mp* and *pp*. The second staff (labeled '2') has a dynamic of *pp*. The tempo markings 'loco rit.' and 'molto rit' are present above the first staff. The system ends with a double bar line and a key signature change to two sharps.

Grave

43

1 *p*

2 *p* *mp*

Detailed description: This system contains measures 43 to 46. The first staff (labeled '1') begins with a piano (*p*) dynamic and features a rhythmic pattern of eighth notes with stems pointing up. The second staff (labeled '2') starts with a piano (*p*) dynamic and has a more sparse accompaniment. In measure 46, the first staff has a dynamic marking of *mp*. The key signature is one flat (B-flat major or D minor).

47

1 *p*

2 *p* *p*

Detailed description: This system contains measures 47 to 50. The first staff (labeled '1') continues with the eighth-note pattern, marked *p*. The second staff (labeled '2') also continues with a piano (*p*) accompaniment. In measure 50, the first staff has a dynamic marking of *p*. The key signature remains one flat.

51

1 *p* *pp* *rall.*

2 *p* *pp*

Detailed description: This system contains measures 51 to 54. The first staff (labeled '1') shows a dynamic shift from *p* to *pp* in measure 52, followed by a *rall.* (ritardando) marking in measure 53. The second staff (labeled '2') also shows a dynamic shift from *p* to *pp* in measure 52. The key signature changes to two flats (B-flat major or D minor).

55

1 *mp*

2 *mp* *p* *pp* *morendo*

Detailed description: This system contains measures 55 to 58. The first staff (labeled '1') has a dynamic marking of *mp* and contains whole notes. The second staff (labeled '2') starts with *mp*, then moves to *p* in measure 56, *pp* in measure 57, and ends with a *morendo* marking in measure 58. The key signature is two flats.